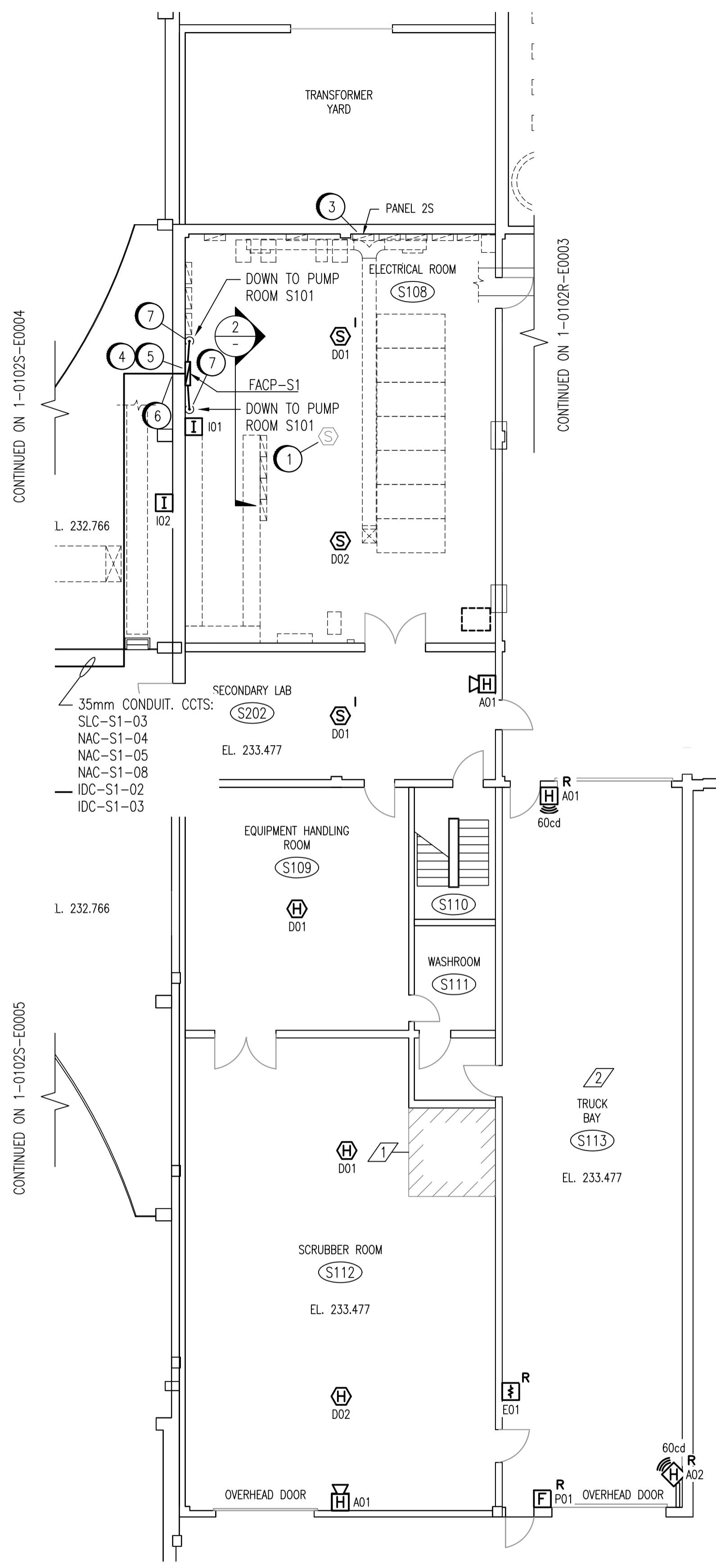
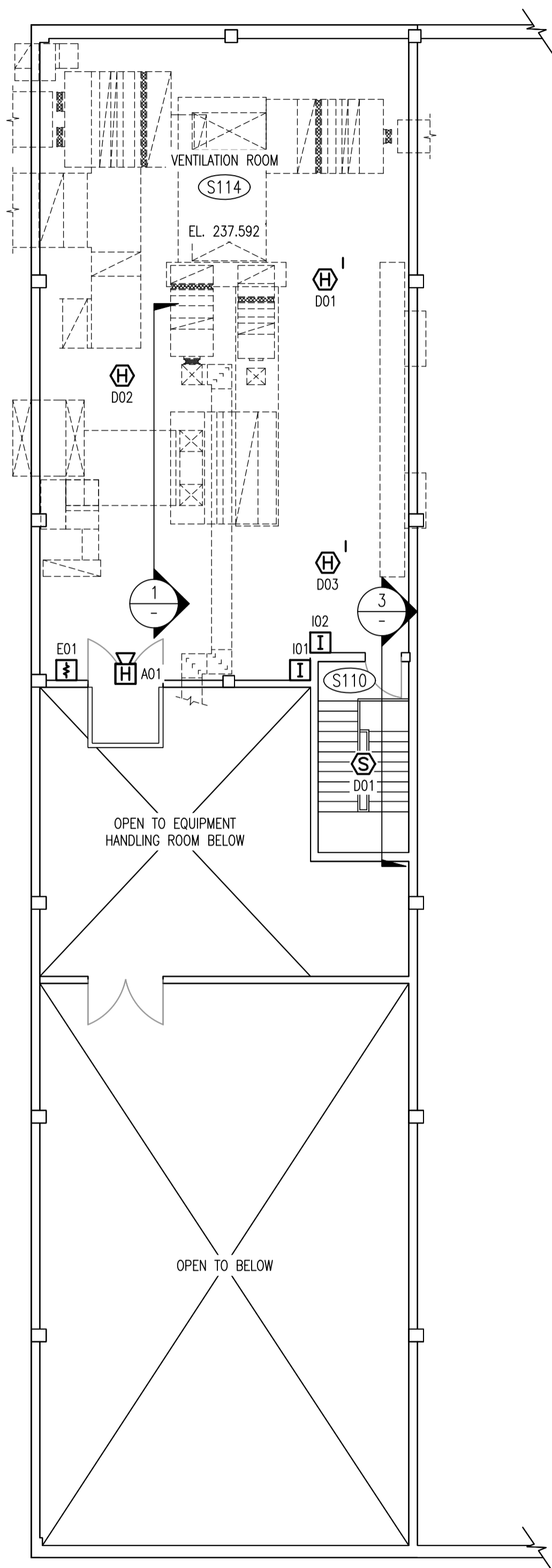
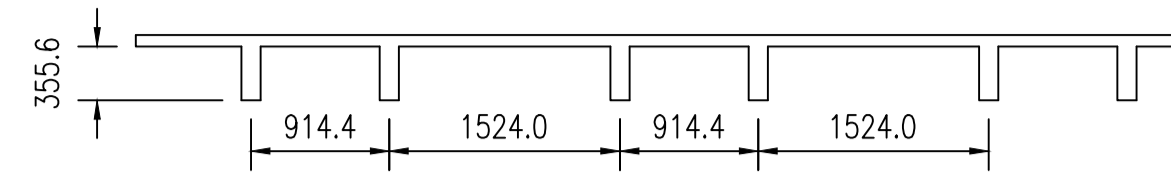


KEYPLAN

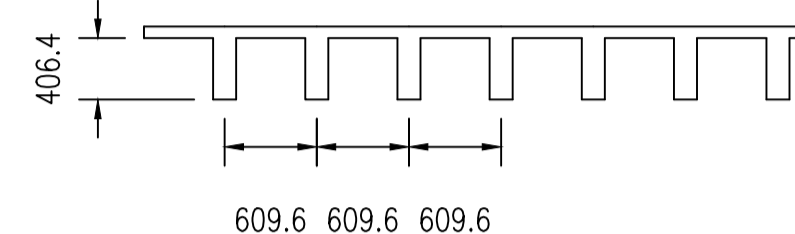


SECONDARY CLARIFIERS - TRUCK BAY AREA

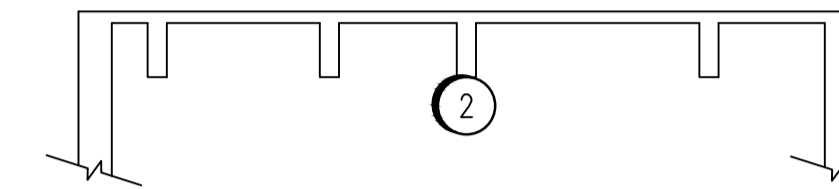
SCALE 1:100



1 CEILING BEAM SECTION
SCALE 1:50



2 CEILING BEAM SECTION
SCALE 1:50



3 TOP OF STAIRWELL S110
SCALE 1:50

CONSTRUCTION NOTES

1	REMOVE EXISTING SMOKE DETECTOR, ALONG WITH ALL WIRING TO THE DCS.
2	INSTALL SMOKE DETECTOR FAS-S110-D01 ON THE BOTTOM OF THE BEAM THAT IS CLOSEST TO THE CENTER OF THE STAIRWELL CEILING.
3	INSTALL NEW 120V, 15A FEEDER FROM ESSENTIAL PNL-2S, CIRCUIT 12 TO FACP-S1. UTILIZE 12 AWG RW90 IN 21mm CONDUITS. BREAKER TO BE RED AND LOCKABLE ON.
4	INSTALL FIRE ALARM CONTROL PANEL FACP-S1 AT THE LOCATION SHOWN. FACP POWER SUPPLY TO PROVIDE A MINIMUM OF 14A AT 24VDC. CONTRACTOR TO ENSURE THAT POWER SUPPLY IS ADEQUATELY SIZED TO POWER ALL DEVICES CONNECTED TO PANEL.
5	RELOCATE EXISTING STORAGE CABINET TO ALLOW FOR INSTALLATION OF FIRE ALARM CONTROL PANEL.
6	SEAL CONDUIT AS PER CSA 22.1 SECTION 22-302(2).
7	INSTALL PENETRATION AS PER DETAIL 1 OF 1-0102A-E0008.

ROOM DETAILS

ROOM ID	HEIGHT	CEILING TYPE	REF DWG
S108	3.96m	SEE DETAIL 2	SEP-072
S109	6.85m	SEE DETAIL 1	CALC'D
S110	14.05m	STAIRWELL	SEP-461
S112	6.85m	SEE DETAIL 1	CALC'D
S113	6.85m	METAL CLADDING	CALC'D
S114	2.73m	SEE DETAIL 1	SEP-449
S202	3.96m	SUSPENDED TILE	SEP-072

DESIGN INTENT NOTES

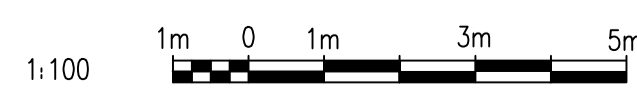
1	PROVIDE EARLY DETECTION OF A FIRE ASSOCIATED WITH THE NATURAL GAS-FIRED HOT WATER PRESSURE WASHER SYSTEM.
2	DETECTION IS OMITTED FROM TRUCK BAY S113 AT THIS TIME, AS PLANNED RENOVATIONS, WHICH WOULD CONVERT THIS AREA FOR A DIFFERENT PURPOSE, MAY CHANGE OR ELIMINATE THE DETECTION REQUIREMENTS FOR THIS AREA.

NOTES:

1. DEVICE TAGS ARE SHOWN IN SHORTHAND NOTATION. FULL DEVICE TAG FORMAT IS FAS-Sxxx-yyy, WHERE xxx IS THE ROOM NUMBER, AND yyy IS THE DEVICE IDENTIFIER.

SEP-692	SMOKE & HIGH TEMPERATURE LOOPS S501/S513/S502/S514
1-0102S-E0022	PANEL SCHEDULE - SECONDARY CLARIFIERS
1-0102S-E0019	ELECTRICAL CLASSIFICATION PLANS
1-0102A-E0001	FIRE ALARM LEGEND AND DETAILS

DRAWING NUMBER REFERENCE DRAWINGS



1:100

NO.	REVISIONS	DATE	DESIGN	CHECK
00	ISSUED FOR TENDER, BID OPP. 209-2011	2011/03/11	EFB	CJR

SNC-Lavalin Inc.
148 Nature Park Way
Winnipeg, MB, Canada R3P 0X7
204-786-8080

DESIGNED BY: E. BOHNCKE
CHECKED BY: C. REIMER
DRAWN BY: E. BOHNCKE
APPROVED BY: C. REIMER
SCALE: AS SHOWN
RELEASED FOR CONSTRUCTION BY: N. HARRINGTON
DATE: 2009/03/20
DATE: 2011/03/11

CONSULTANT NO.: 112577-0101-47DD-0061

ENGINEER'S SEAL

ORIGINAL DRAWING
SEALED BY:
C. J. REIMER
SNC-Lavalin
MEMBER #21968
2011/03/25
REV. 00

THE CITY OF WINNIPEG
WATER AND WASTE DEPARTMENT

SOUTH END WATER POLLUTION CONTROL CENTRE
FIRE ALARM UPGRADE
PLAN LAYOUT
FIRE ALARM - SECONDARY CLARIFIERS
TRUCK BAYS & ELECTRICAL ROOM

CITY DRAWING NUMBER: 1-0102S-E0003
SHEET: 001
REV: 00
SIZE: A1