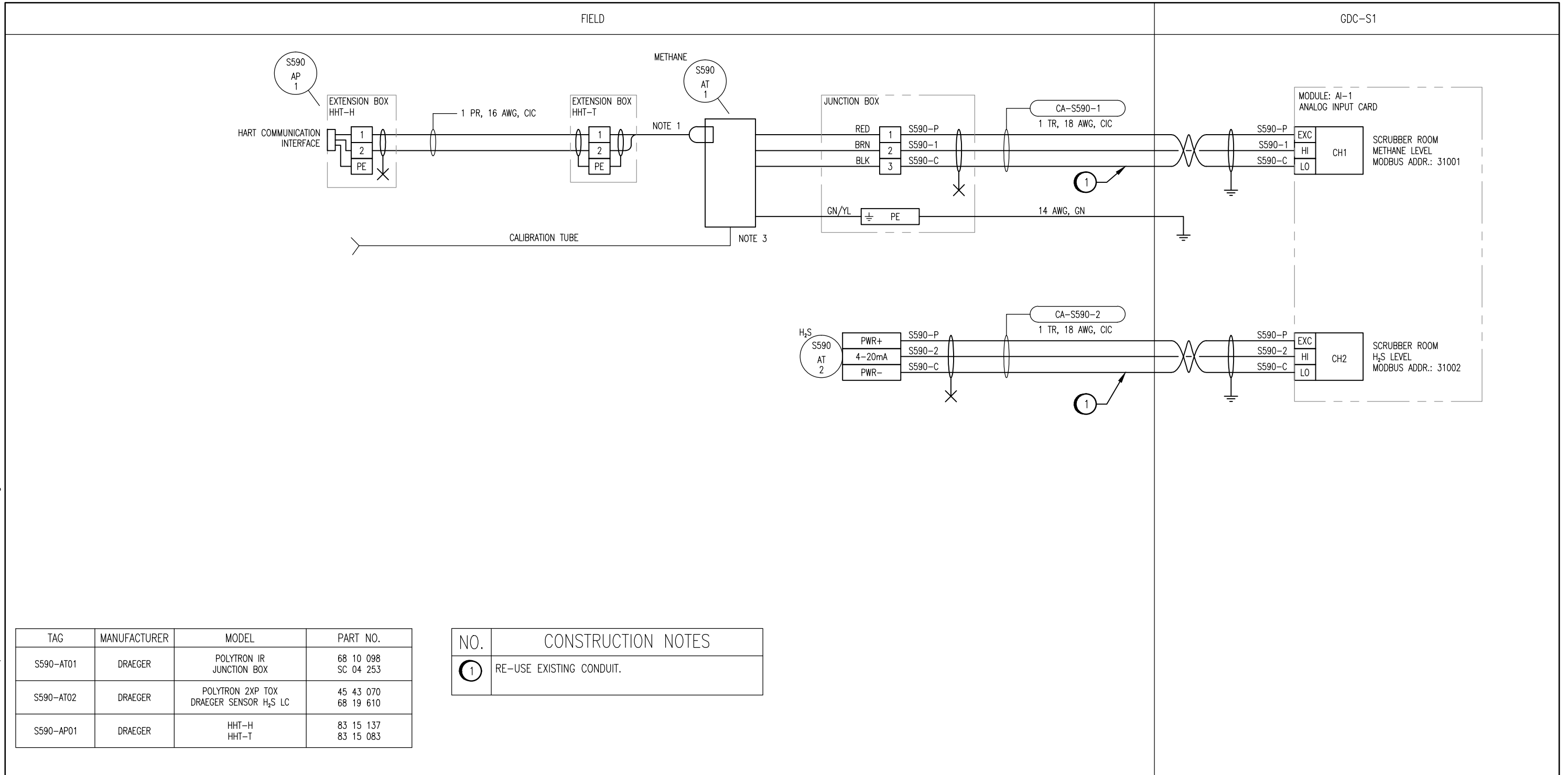


B SIZE - 279mm x 432mm

LAST SAVE: 2011/03/29 - 12:46pm
 PATH: M:\112577\0106\4ENG\48&C\DD - General DWG\1-0102S-A0061-001-00.dwg



TAG	MANUFACTURER	MODEL	PART NO.
S590-AT01	DRAEGER	POLYTRON IR JUNCTION BOX	68 10 098 SC 04 253
S590-AT02	DRAEGER	POLYTRON 2XP TOX DRAEGER SENSOR H ₂ S LC	45 43 070 68 19 610
S590-AP01	DRAEGER	HHT-H HHT-T	83 15 137 83 15 083

NO.	CONSTRUCTION NOTES
①	RE-USE EXISTING CONDUIT.

NOTES:

- THE CABLE BETWEEN HHT-T AND TRANSMITTER IS PROVIDED WITH THE HHT-T EXTENSION BOX.
- INSTALL IN ACCORDANCE WITH HAZARDOUS CLASS 1, ZONE 2 REQUIREMENTS.
- GALVANIC ISOLATOR USED FOR I.S. BARRIER.



NO.	REVISIONS	DATE	DESIGN	CHECK
00	ISSUED FOR TENDER, BID OPP. 209-2011	2011/03/11	TMC	CJR

SNC-LAVALIN INC.
 148 Nature Park Way
 Winnipeg, MB, Canada R3P 0X7
 204-786-8080

DESIGNED BY: T. CHURCH	CHECKED BY: C. REIMER
DRAWN BY: S. COATES	APPROVED BY: C. REIMER
SCALE: N.T.S.	DATE: 2009/12/11
RELEASED FOR CONSTRUCTION BY: N. HARRINGTON	DATE: 2011/03/11
CONSULTANT NO.: 112577-0106-48DD-1605	

ENGINEER'S SEAL

ORIGINAL DRAWING SEALED BY:
 T. M. CHURCH
 SNC-LAVALIN
 2011/03/25
 REV. 00

THE CITY OF WINNIPEG
 WATER AND WASTE DEPARTMENT

SOUTH END WATER POLLUTION CONTROL CENTRE
 ESSENTIAL SYSTEM UPGRADES
 INSTRUMENT LOOP DIAGRAM
 S590 SCRUBBER ROOM GAS DETECTION

CITY DRAWING NUMBER	SHEET	REV.	SIZE
1-0102S-A0061	001	00	B