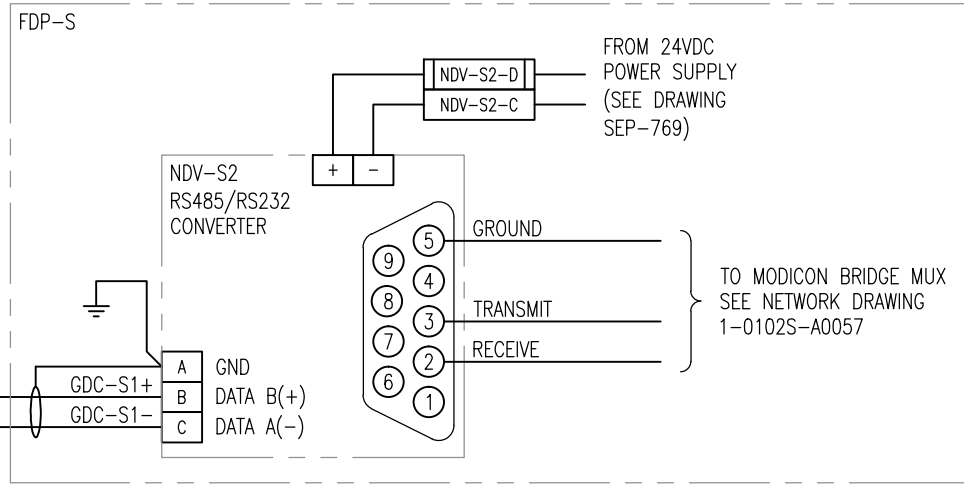
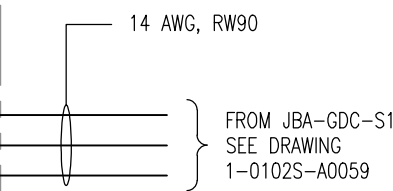
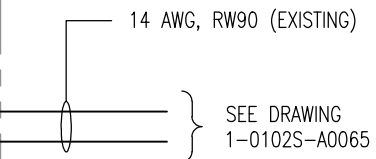
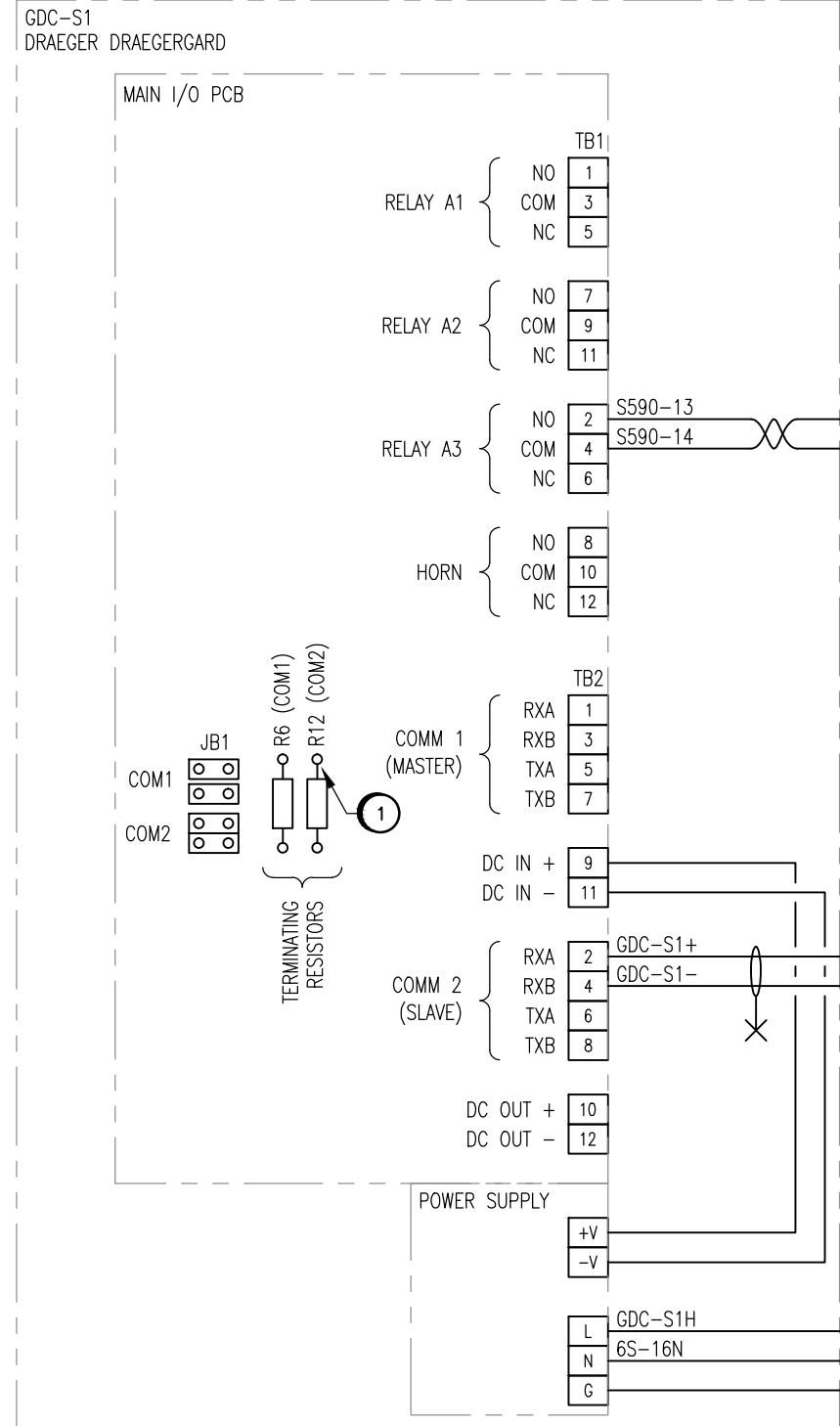


B SIZE - 279mm x 432mm

LAST SAVE: 2011/03/29 - 12:45pm
 PATH: M:\112577\0106\4ENG\48&C\DD - General DWG\1-0102S-A0060-001-00.dwg



NO.	CONSTRUCTION NOTES
1	LEAVE TERMINATING RESISTOR R12 (COMM2) ON MAIN I/O PCB.

NDV-S2 DIPSWITCH SETTINGS

NO.	POS.	SETTING
1	ON	2 WIRE RS485
2	ON	
3	ON	
4	ON	
5	ON	USE TERMINATION RESISTOR
6	OFF	USE TRANSMIT BIAS RESISTOR
7	OFF	USE RECEIVE BIAS RESISTOR
8	-	BAUD RATE
9	-	
10	-	
11	-	
12	-	



SNC-LAVALIN INC.
 148 Nature Park Way
 Winnipeg, MB, Canada R3P 0X7
 204-786-8080

ENGINEER'S SEAL
 ORIGINAL DRAWING SEALED BY:
 T. M. CHURCH
 SNC-LAVALIN
 2011/03/25
 REV. 00



SOUTH END WATER POLLUTION CONTROL CENTRE
 ESSENTIAL SYSTEM UPGRADES
 WIRING DIAGRAM
 GDC-S1 GAS DETECTION CONTROLLER
 AND NDV-S2 RS485/RS232 CONVERTER

NO.	REVISIONS	DATE	DESIGN	CHECK
00	ISSUED FOR TENDER, BID OPP. 209-2011	2011/03/11	TMC	CJR

DESIGNED BY:	T. CHURCH	CHECKED BY:	C. REIMER
DRAWN BY:	S. COATES	APPROVED BY:	C. REIMER
SCALE:	N.T.S.	DATE:	2010/03/11
RELEASED FOR CONSTRUCTION			
BY:	N. HARRINGTON	DATE:	2011/03/11
CONSULTANT NO.:	112577-0106-48DD-1604		

CITY DRAWING NUMBER	SHEET	REV.	SIZE
1-0102S-A0060	001	00	B