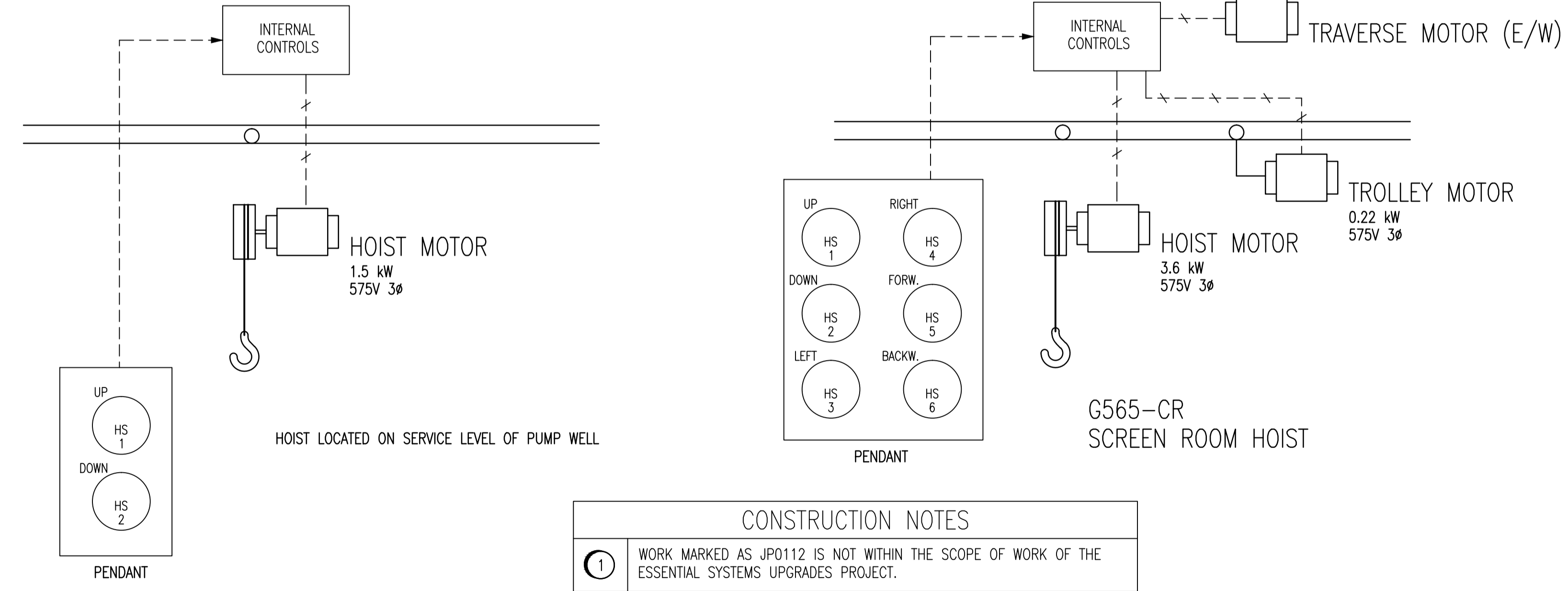
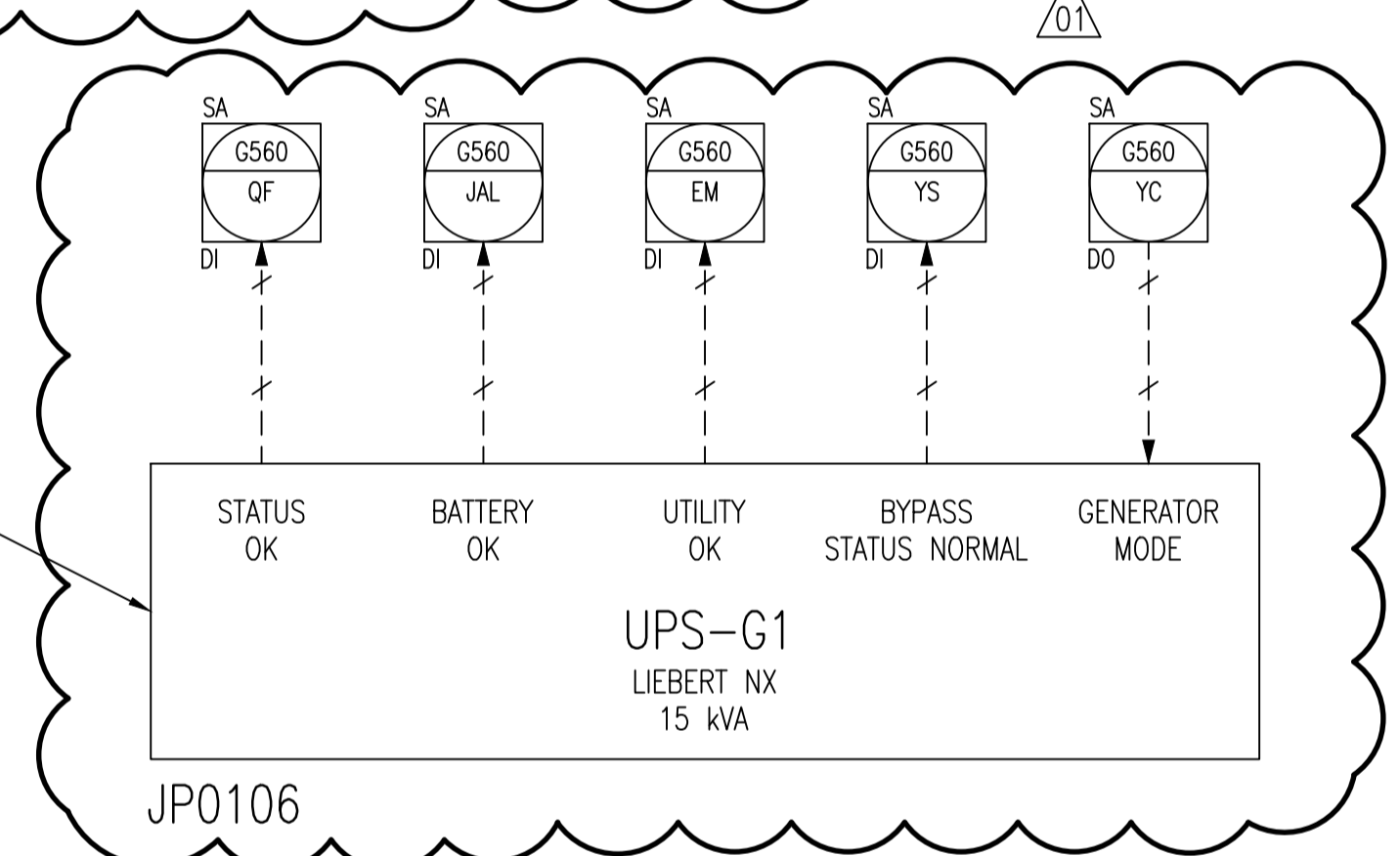
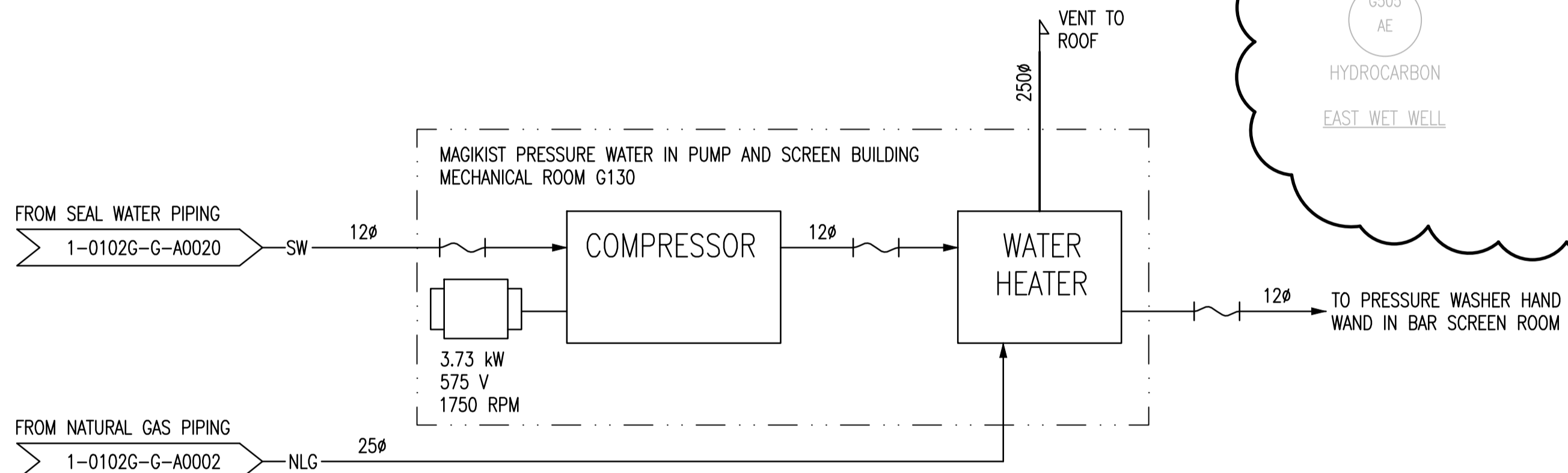
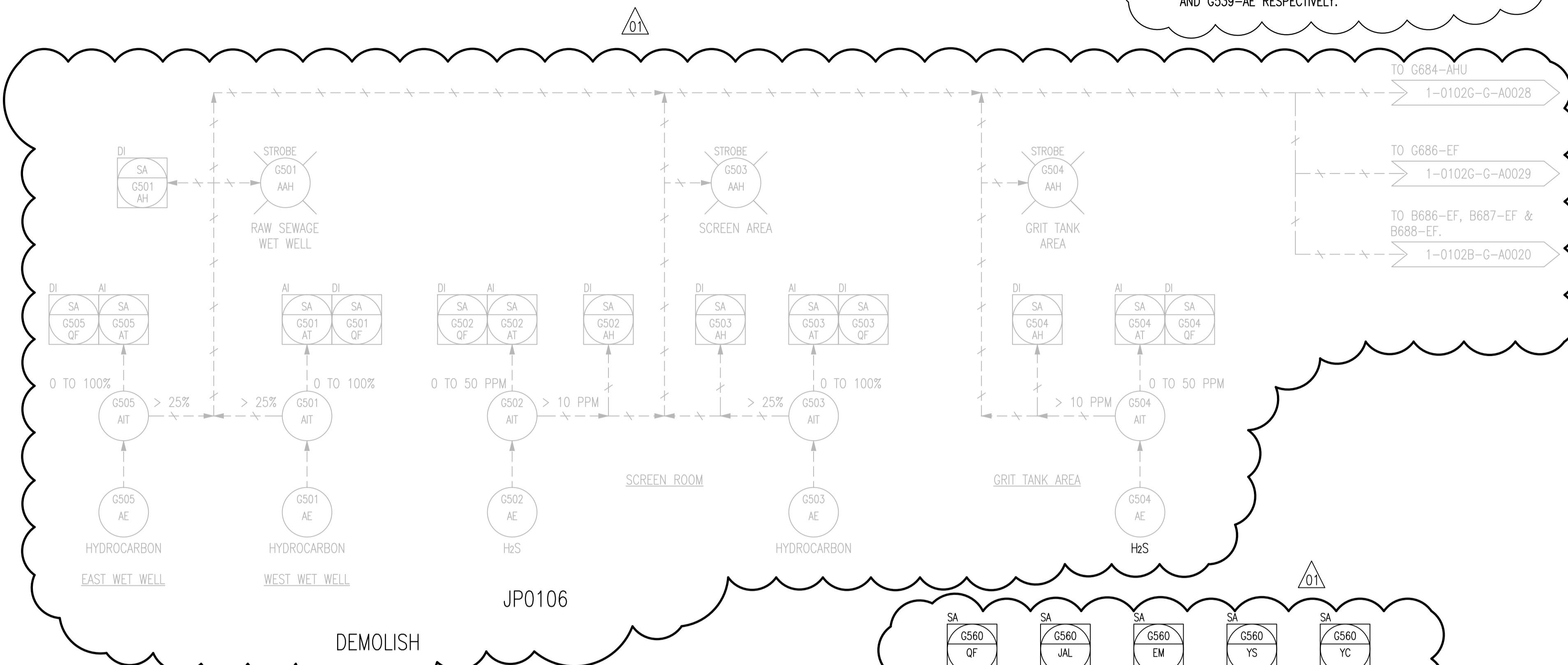
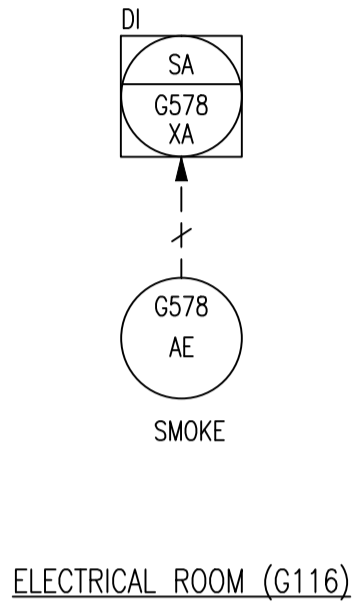
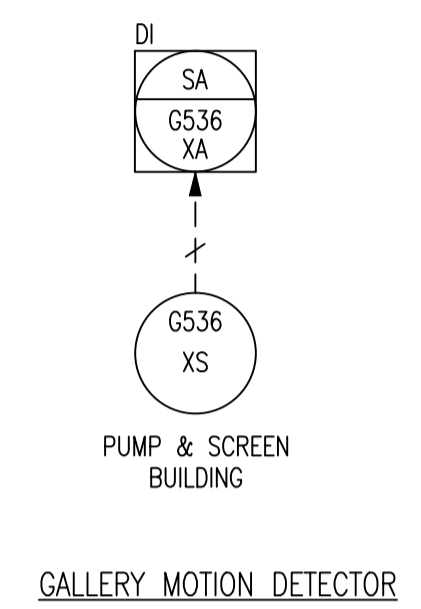
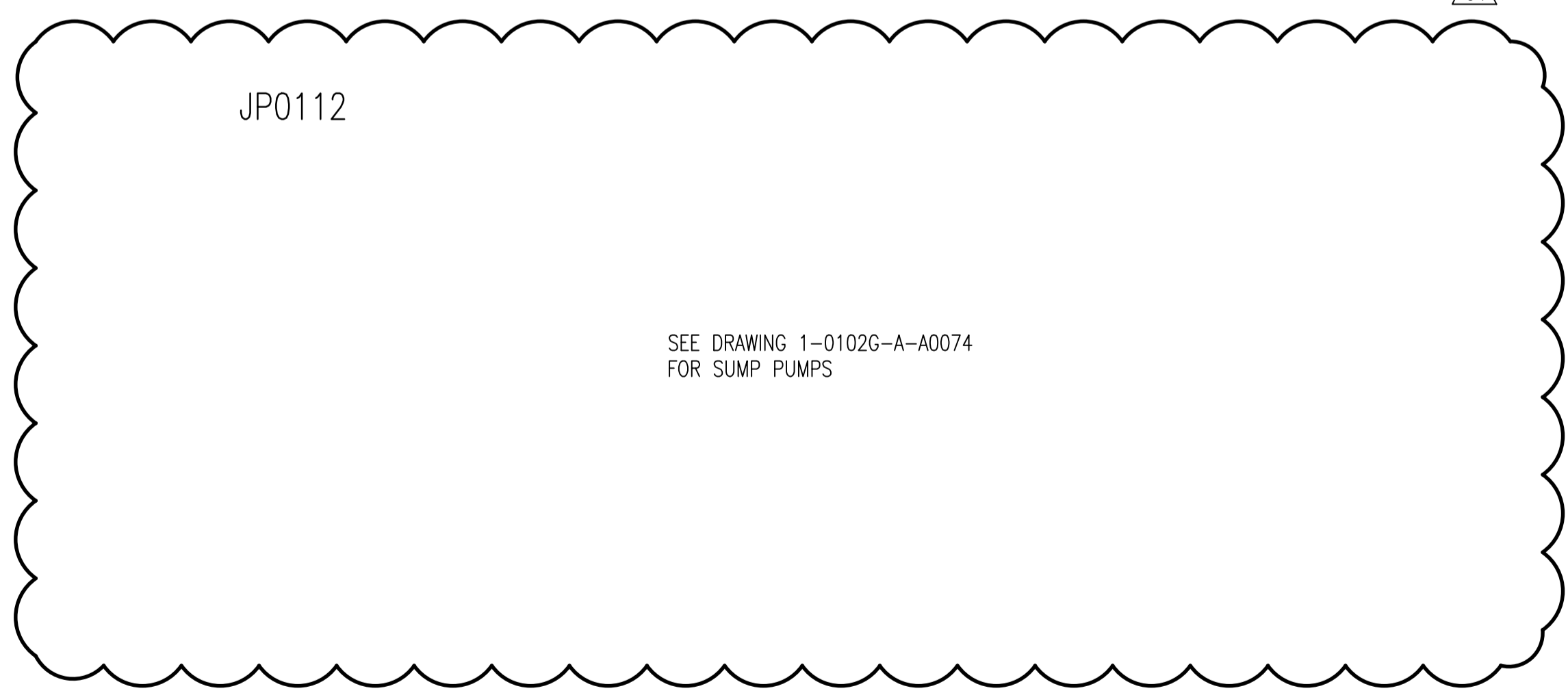


INCONSISTENCIES
 I-1 MOTION DETECTORS G536-XS, G537-XS, G538-XS, AND G539-XS ARE CURRENTLY DESIGNATED AS G536-AE, G537-AE, G538-AE, AND G539-AE RESPECTIVELY.



CONSTRUCTION NOTES
 1 WORK MARKED AS JP0112 IS NOT WITHIN THE SCOPE OF WORK OF THE ESSENTIAL SYSTEMS UPGRADES PROJECT.

NOTES:
 1. THIS DRAWING SUPERSEDES PART OF DRAWING SEP-866.
 2. ALL INSTRUMENTS SHOWN IN AN AUXILIARY LOCATION ARE LOCATED IN THE ASSOCIATED LOCAL MOTOR STARTER PANEL IN ELECTRICAL ROOM G116, UNLESS OTHERWISE INDICATED.



SNC-LAVALIN INC. 148 Nature Park Way Winnipeg, MB, Canada R3P 0X7 204-786-8080				ENGINEER'S SEAL ORIGINAL DRAWING SEALED BY: T. M. CHURCH SNC-LAVALIN MEMBER #32682 2011/03/25 REV. 01 CHANGES ONLY		THE CITY OF WINNIPEG WATER AND WASTE DEPARTMENT SOUTH END WATER POLLUTION CONTROL CENTRE PUMP & SCREEN BUILDING PROCESS & INSTRUMENTATION DIAGRAM MISCELLANEOUS	
DESIGNED BY:	EXISTING	CHECKED BY:	EFB	CITY DRAWING NUMBER	SHEET	REV.	SIZE
DRAWN BY:	DAH/EFB	APPROVED BY:	CJR				
SCALE:	NTS	RELEASED FOR CONSTRUCTION BY:	N. HARRINGTON				
DATE:	2005/11/02	DATE:	2011/03/11				
CONSULTANT NO.:	112577-0106-49DD-0004						
NO.	REVISIONS	DATE	DESIGN	CHECK			
01	REMOVED GAS DETECTION, ADDED UPS-G1	2011/03/11	TMC	CJR			
00	ISSUED FOR CITY USE	2006/11/28	-	EFB			