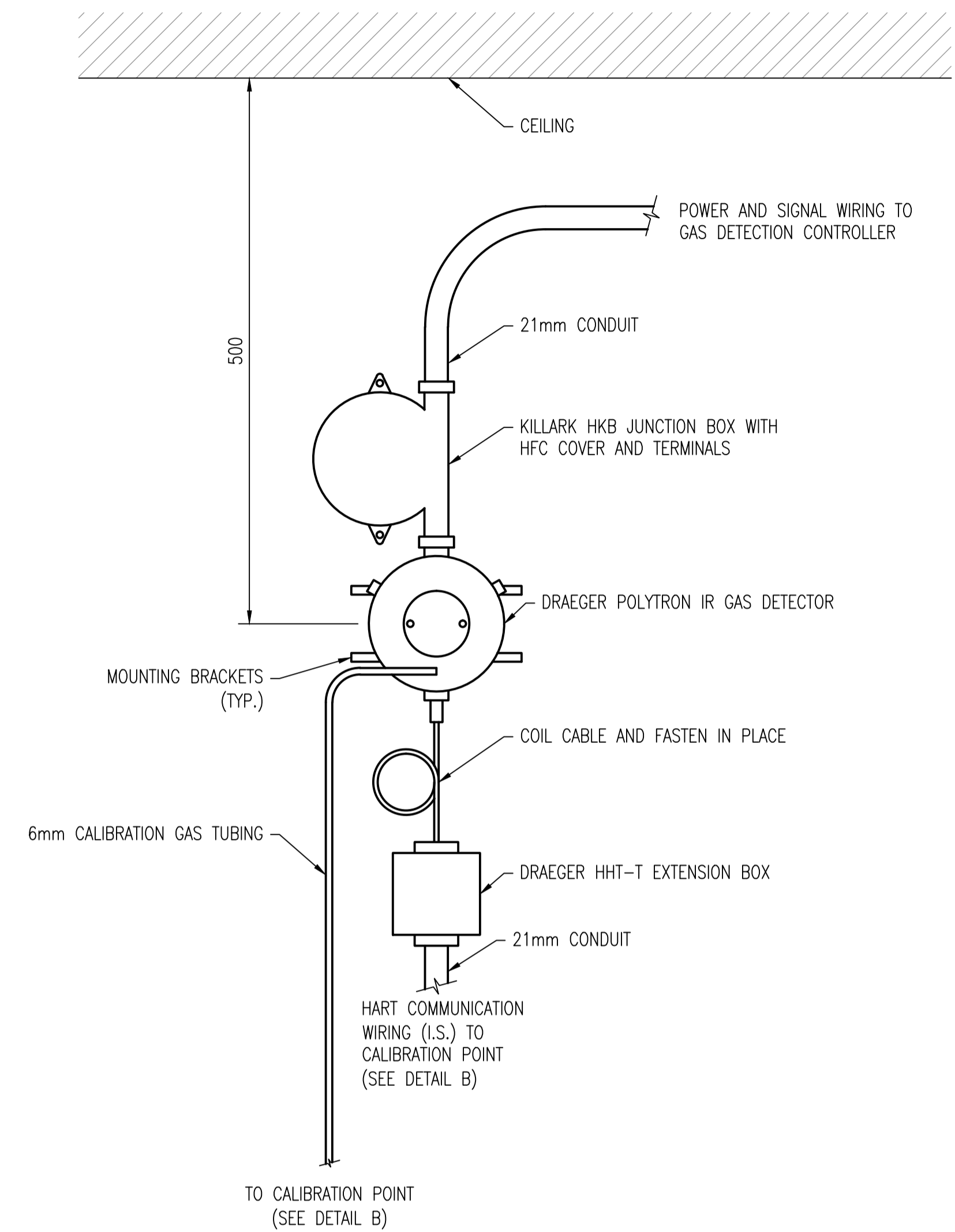
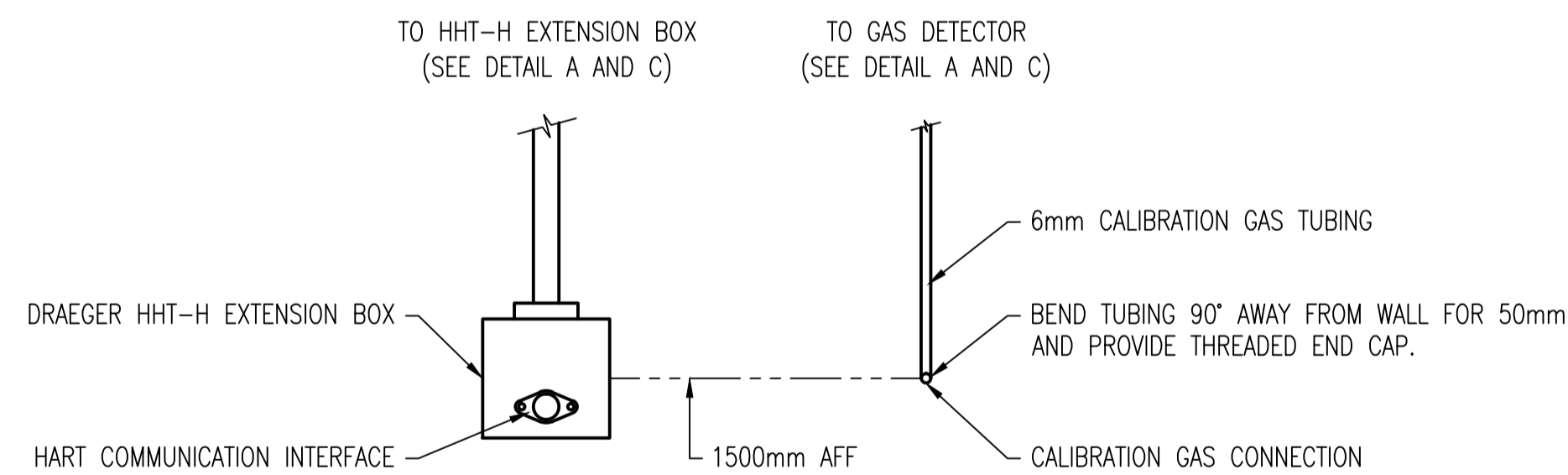


A CEILING BEAM MOUNTED METHANE DETECTOR - HAZARDOUS CLASS 1, ZONE 2 LOCATION
SCALE 1:4



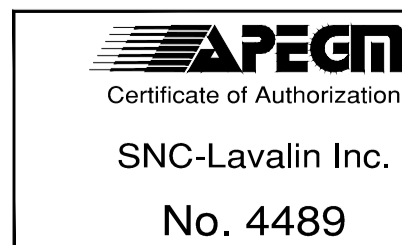
C WALL MOUNTED METHANE DETECTOR - UNCLASSIFIED LOCATION
SCALE 1:4



B CALIBRATION POINT
SCALE 1:4

NOTES:

- INSTALL ALL METALLIC CONDUITS AND DEVICES WITH A MINIMUM OF 12mm CLEARANCE FROM THE SUPPORTING SURFACE AS PER CEC 22-302.



NO.	REVISIONS	DATE	DESIGN	CHECK
00	ISSUED FOR TENDER, BID OPP. 209-2011	2011/03/11	TMC	CJR

SNC-LAVALIN INC. 148 Nature Park Way Winnipeg, MB, Canada R3P 0X7 204-798-8080	
DESIGNED BY: T. CHURCH	CHECKED BY: C. REIMER
DRAWN BY: S. COATES	APPROVED BY: C. REIMER
SCALE: 1:4	RELEASED FOR CONSTRUCTION BY: N. HARRINGTON DATE: 2011/03/11
DATE: 2009/10/28	CONSULTANT NO.: 112577-0106-48DD-1900

ENGINEER'S SEAL
ORIGINAL DRAWING
SEALED BY:
T. M. CHURCH
SNC-LAVALIN
MEMBER # 32682
2011/03/25
REV. 00

THE CITY OF WINNIPEG
WATER AND WASTE DEPARTMENT

SOUTH END WATER POLLUTION CONTROL CENTRE
ESSENTIAL SYSTEM UPGRADES
INSTALLATION DETAILS
GAS DETECTION EQUIPMENT
CEILING BEAM AND WALL MOUNTED

CITY DRAWING NUMBER	SHEET	REV.	SIZE
1-0102A-A0004	001	00	A1