

REMOVE EXISTING CONCRETE SIDEWALK AND CURB AND CONSTRUCT NEW CONCRETE AND CURB WITH A PARA RAMP

REMOVE EXISTING CONCRETE SIDEWALK AND CURB AND CONSTRUCT NEW CONCRETE AND CURB WITH A PARA RAMP SEE DETAIL A

REMOVE BENCH AND EXCAVATE SOD CONSTRUCT BENCH NODE AS PER SCD-136AR INSTALL TACHE ACCESSIBLE BENCH SCR-139

PATCH EXISTING CUT WITH ASPHALT

REMOVE ASPHALT AND CUT TREE ROOTS AND RELAY ASPHALT AS PER SCD-648R AND RELAY ASPHALT AS PER SCD-648R

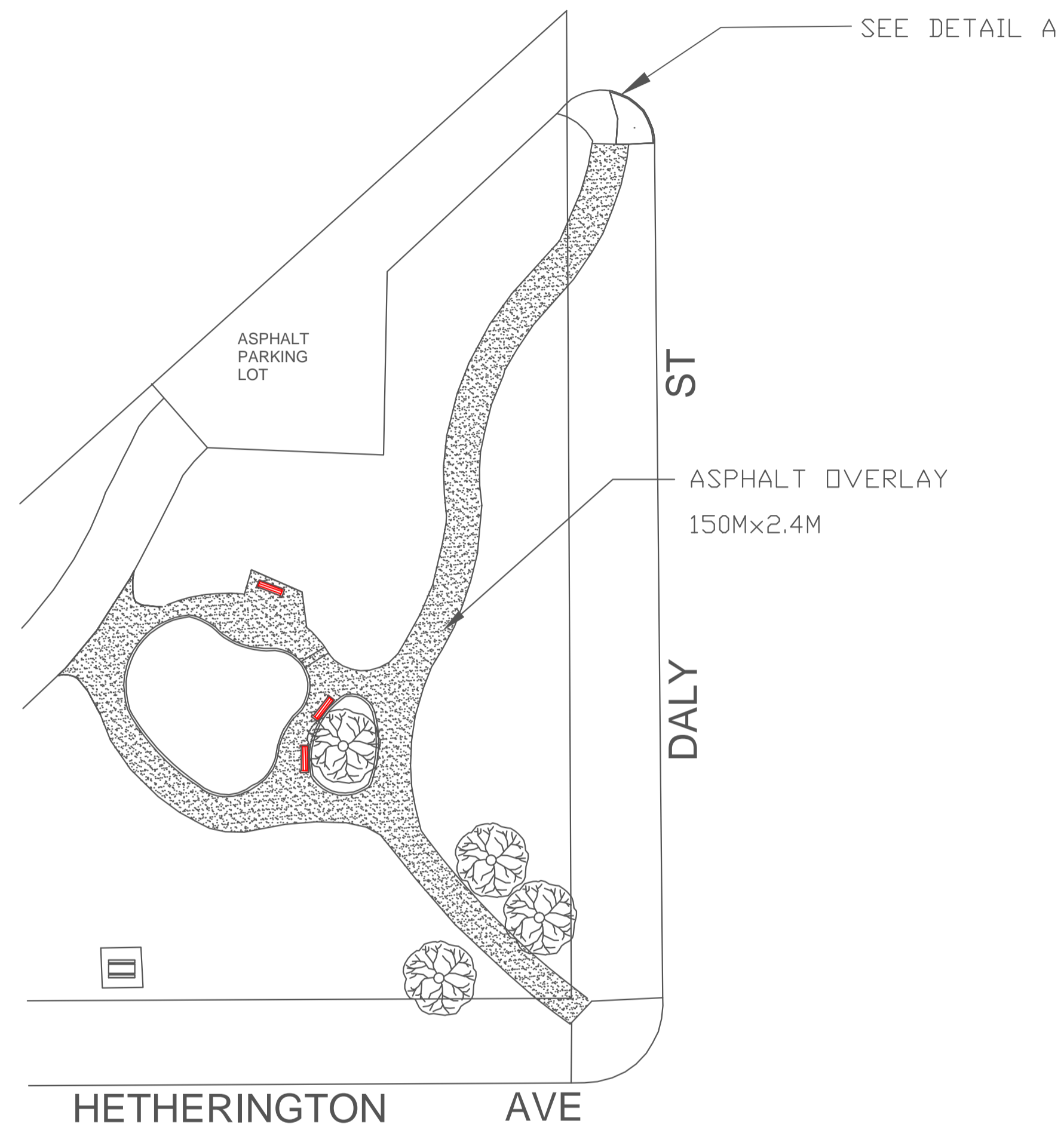
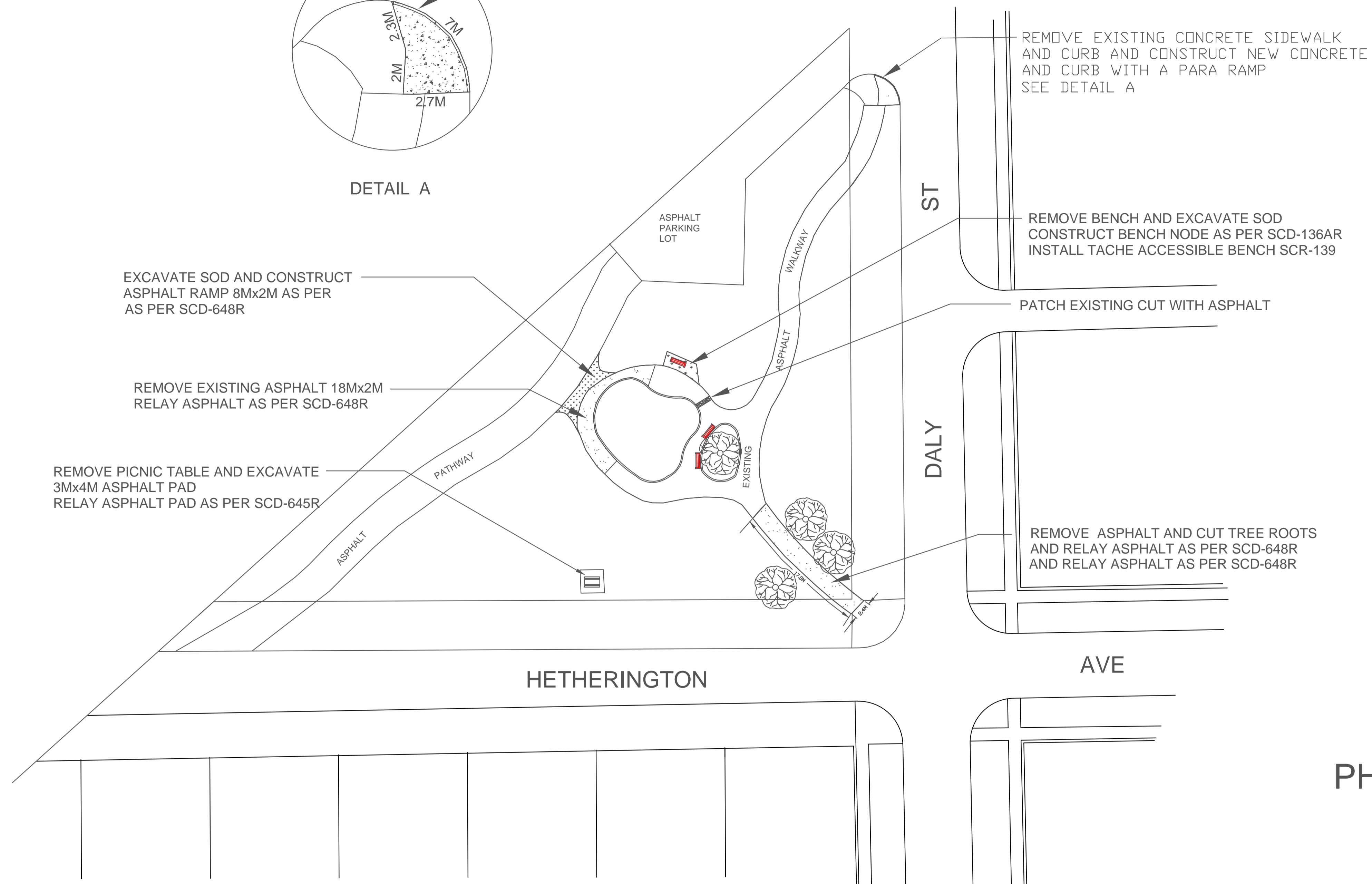
SEE DETAIL A

ASPHALT OVERLAY 150Mx2.4M

EXCAVATE SOD AND CONSTRUCT ASPHALT RAMP 8Mx2M AS PER AS PER SCD-648R

REMOVE EXISTING ASPHALT 18Mx2M RELAY ASPHALT AS PER SCD-648R

REMOVE PICNIC TABLE AND EXCAVATE 3Mx4M ASPHALT PAD RELAY ASPHALT PAD AS PER SCD-645R



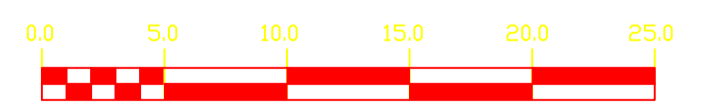
PHASE 1 PATHWAY REPAIRS

PHASE 2 ASPHALT OVERLAY

METRIC
WHOLE NUMBERS INDICATE MILLIMETRES
DECIMALIZED NUMBERS INDICATE METRES

WARNING

IF POWER EQUIPMENT OR EXPLOSIVES ARE TO BE USED FOR EXCAVATION ON THIS PROJECT THE CONTRACTOR MUST:
1) NOTIFY THE GAS COMPANY OF THE PROPOSED LOCATION OF EXCAVATION.
2) TAKE PRECAUTION TO AVOID DAMAGE TO GAS COMPANY INSTALLATIONS.
SEE PROVINCIAL REGULATION 210/72 FOR DETAILS



200 WM	WATERMAIN	200 WM	SL, HYDRD	150 WM	WATERMAIN	150 WM
	HYDRANT		MTS		HYDRANT	
	VALVE		TRAFFIC SIGNALS		VALVE	
	LAND DRAINAGE SEWER		GAS		LAND DRAINAGE SEWER	
	WASTEWATER SEWER		SURVEY BAR		WASTEWATER SEWER	
	MANHOLE		POLE TOP LUMINARES		TOP OF ASPHALT	
	CATCH BASIN		EXIST.POLE TOP LUMINARES		TOP OF LIMESTONE BASE	
	CURB INLET		PROP. POLE & LUMINARE			
	REDUCER		PROP. BASE, POLE & LUMINARE			
	COUPLER		BURIED LIGHT CABLE			
	ANODE		TREE			
	LEGEND-PLAN		LEGEND-PLAN		LEGEND-PROFILE	

LOCATION APPROVED		B.M. ELEV.	FIELD BOOK #
UNDERGROUND STRUCTURES		POSTED TO LBIS	
SUPV. U/G STRUCTURES COMMITTEE	DATE		
NOTE: LOCATION OF UNDERGROUND STRUCTURES AS SHOWN ARE BASED ON THE BEST INFORMATION AVAILABLE BUT NO GUARANTEE IS GIVEN THAT ALL EXISTING UTILITIES ARE SHOWN OR THAT THE GIVEN LOCATIONS ARE EXACT. CONFIRMATION OF EXISTENCE AND EXACT LOCATION OF ALL SERVICES MUST BE OBTAINED FROM THE INDIVIDUAL UTILITIES BEFORE PROCEEDING WITH CONSTRUCTION.			
NO. REVISIONS	DATE	BY	

CITY OF WINNIPEG
PARKS WATERWAYS AND COMMUNITY INITIATIVES

DESIGNED BY: TB
CHECKED BY: RZ
DRAWN BY: TB
APPROVED BY: RZ
HOR. SCALE: 1:300
VERTICAL: VERTICAL
RELEASED FOR CONSTRUCTION: DATE JULY 5, 2011

LANDSCAPE ARCHITECT'S/ENGINEER'S SEAL

THE CITY OF WINNIPEG
Planning, Property and Development Depart.
Parks Waterways and Community Initiatives
Unit 15-30 Fort Street

Winnipeg

HETHERINGTON PARK
EXISTING CONDITIONS REMOVALS
AND PATH AND SITE IMPROVEMENTS

SHEET 1 OF 1
CITY DRAWING NUMBER
H,9-E

BID OPPORTUNITY
FILENAME
PLOT DATE