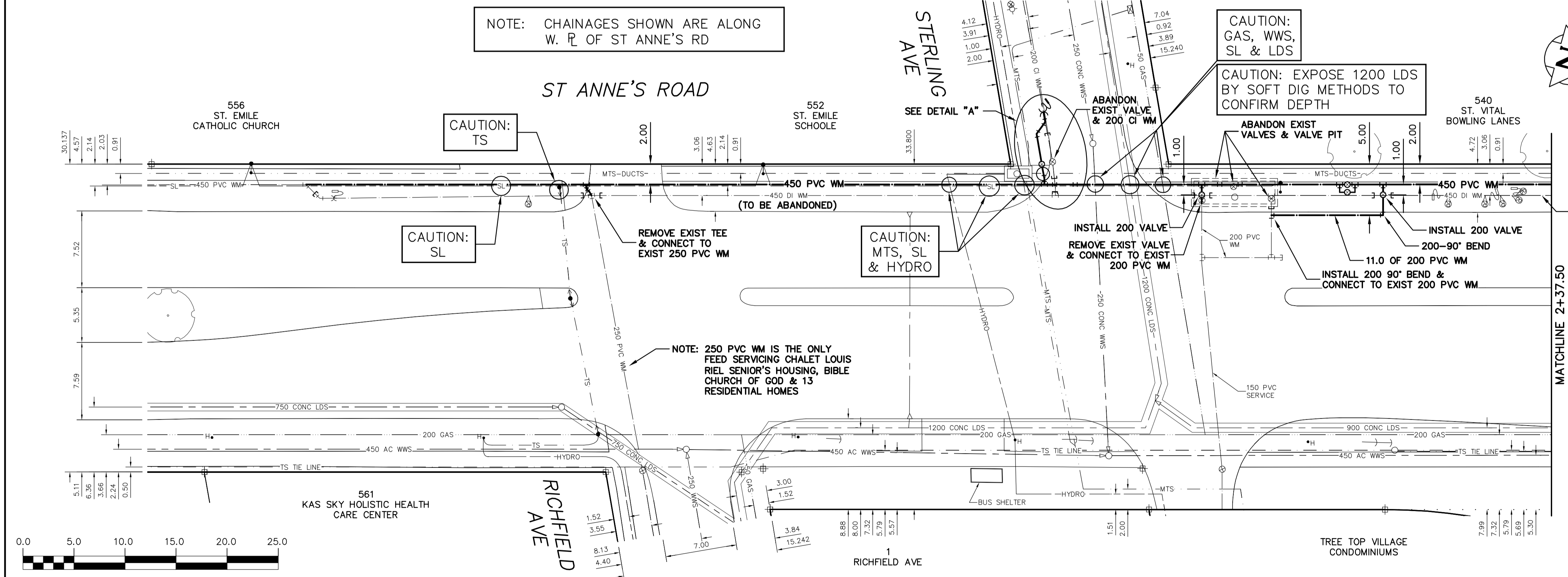


WATER SERVICE INFORMATION					
ADDRESS	SIZE(mm) & TYPE (STREET)	SIZE(mm) & TYPE (PROP.)	SHORT & LONG MEASUREMENT	CORP. LOCATION	REMARKS
540 ST ANNE'S ST COMMERCIAL	50 COPPER	50 COPPER	4.16 WEL BLDG	OPP S/C	SERV. OFF STERLING
552 ST ANNE'S ST COMMERCIAL	25 COPPER	25 COPPER	59.32 WEL ST ANNE'S	OPP S/C	SERV. OFF STERLING
556 ST ANNE'S ST COMMERCIAL	25 COPPER	25 COPPER	79.88 WEL ST ANNE'S	OPP S/C	---
681 ST ANNE'S ST COMMERCIAL	25 COPPER	25 COPPER	101.65 SSL STERLING	2.5 N OF S/C	SERV. OF RICHFIELD
1 RICHFIELD AVE RESIDENTIAL	20 COPPER	20 COPPER	2.60 EWL BLDG	0.6 E OF S/C	SERV. OF RICHFIELD
	20 COPPER	20 COPPER	9.66 EEL ST ANNE'S	0.5 E OF S/C	SERV. OF RICHFIELD
	20 COPPER	20 COPPER	5.16 EWL HSE	---	---
	20 COPPER	20 COPPER	10.79 EEL ST ANNE'S	---	---

* SERVICES TO BE RENEWED TO R.P. UPON CONFIRMATION BY THE CONTRACTOR OF EXISTING LEAD SERVICE.



- CONSTRUCTION NOTES
1. EXPOSE EXISTING WATERMAIN & CONFIRM INVERTS PRIOR TO CONSTRUCTION.
 2. LOCATION OF ALL SERVICES TO BE CONFIRMED IN THE FIELD.
 3. INSTALL WATERMAIN BY TRENCHLESS METHODS.
 4. TRENCHES AND EXCAVATIONS WITHIN 1 METRE OF A PAVED AREA INCLUDING SIDEWALKS SHALL BE CLASS 3 BACKFILL.
 5. ALL MATERIALS SHALL CONFORM TO THE CITY OF WINNIPEG STANDARD CONSTRUCTION SPECIFICATIONS.
 6. MINIMUM COVER TO TOP OF WATERMAIN SHALL BE 2.4 m.
 7. REPLACE ALL EXISTING LEAD SERVICES FROM PROPOSED WATERMAIN TO R.P.
 8. NOTIFY ALL AFFECTED RESIDENTS AND BUSINESSES 24 HOURS IN ADVANCE OF ANY WATER SHUTDOWNS OR DISRUPTION OF SERVICE.
- WARNING
- IF POWER EQUIPMENT OR EXPLOSIVES ARE TO BE USED FOR EXCAVATION ON THIS PROJECT THE CONTRACTOR MUST:
- 1) NOTIFY THE GAS COMPANY OF THE PROPOSED LOCATION OF EXCAVATION.
 - 2) TAKE PRECAUTION TO AVOID DAMAGE TO GAS COMPANY INSTALLATIONS.
- SEE PROVINCIAL REGULATION 210/72 FOR DETAILS

200 WM	WATERMAIN	200 WM	SL, HYDRO	150 WM	WATERMAIN	150 WM
⊕	HYDRANT	⊕	MTS	⊕	HYDRANT	⊕
⊕	VALVE	⊕	TRAFFIC SIGNALS	⊕	VALVE	⊕
⊕	LAND DRAINAGE SEWER	⊕	GAS	⊕	LAND DRAINAGE SEWER	⊕
⊕	WASTEWATER SEWER	⊕	SURVEY BAR	⊕	WASTEWATER SEWER	⊕
○	MANHOLE	○	FENCE	⊕	PROFILE	⊕
□	CATCH BASIN	□	POLE - HYDRO, MTS	⊕	GROUND ABOVE PIPE	⊕
▽	CURB INLET	▽	CURB STOP	⊕	DITCH (NORTH & WEST)	⊕
▽	REDUCER	▽	GUY ANCHOR	⊕	DITCH (SOUTH & EAST)	⊕
⊕	COUPLER	⊕	LIGHT STANDARD	⊕	GUTTER (NORTH & WEST)	⊕
⊕	ANODE	⊕	TREE	⊕	GUTTER (SOUTH & EAST)	⊕
---	EXISTING	---	LEGEND-PLAN	---	EXISTING	---
---	LEGEND-PLAN	---	PROPOSED	---	LEGEND-PROFILE	---
---	PROPOSED	---	EXISTING	---	PROPOSED	---

LOCATION APPROVED UNDERGROUND STRUCTURES		B.M. ELEV.	FIELD BOOK #:
SUPV. U/G STRUCTURES COMMITTEE <td>DATE <td>POSTED TO LBIS <td></td> </td></td>	DATE <td>POSTED TO LBIS <td></td> </td>	POSTED TO LBIS <td></td>	
NOTE: LOCATION OF UNDERGROUND STRUCTURES AS SHOWN ARE BASED ON THE BEST INFORMATION AVAILABLE BUT NO GUARANTEE IS GIVEN THAT ALL EXISTING UTILITIES ARE SHOWN OR THAT THE GIVEN LOCATIONS ARE EXACT. CONFIRMATION OF EXISTENCE AND EXACT LOCATION OF ALL SERVICES MUST BE OBTAINED FROM THE INDIVIDUAL UTILITIES BEFORE PROCEEDING WITH CONSTRUCTION.			
NO.	REVISIONS	DATE	BY

CITY OF WINNIPEG
WATER AND WASTE
ENGINEERING DIVISION

DESIGNED BY: RC
CHECKED BY: SC

DRAWN BY: CJH
APPROVED BY: SC

HOR. SCALE: 1:250
VERTICAL: 1:50

RELEASED FOR CONSTRUCTION
KAS ZUREK
DATE: 2011 02 11
DATE: 03-03-11

ENGINEER'S SEAL

ORIGINAL SIGNED BY
R.W. CARROLL
02-14-11

BID OPPORTUNITY: 12-2011
FILENAME: D-12280.dwg
PLOT DATE: 2011 03 03

THE CITY OF WINNIPEG
WATER AND WASTE DEPARTMENT

2011 WATERMAIN RENEWALS
CONTRACT 7
ST ANNE'S ROAD
80 S OF STERLING AVENUE TO
45 S OF BISHOP GRANDIN BOULEVARD

SHEET 3 OF 6
CITY DRAWING NUMBER
D-12280