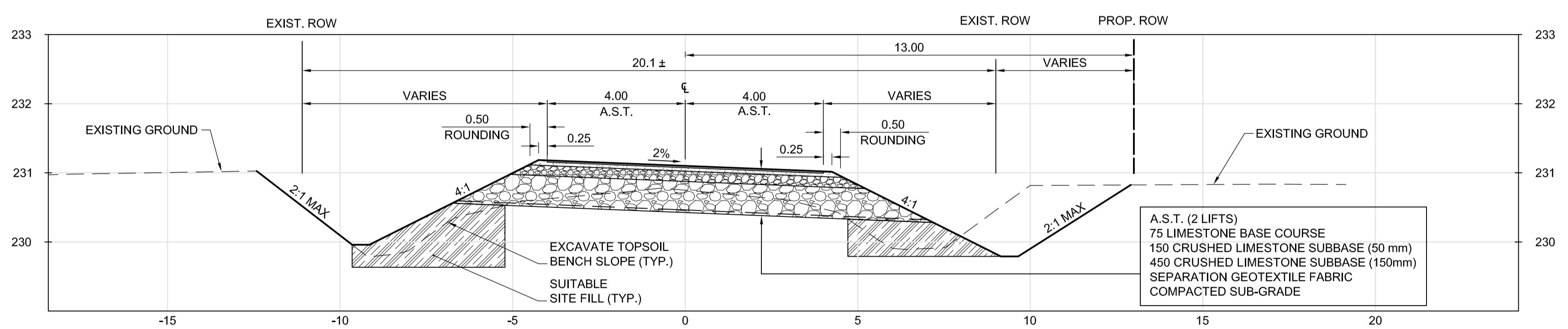
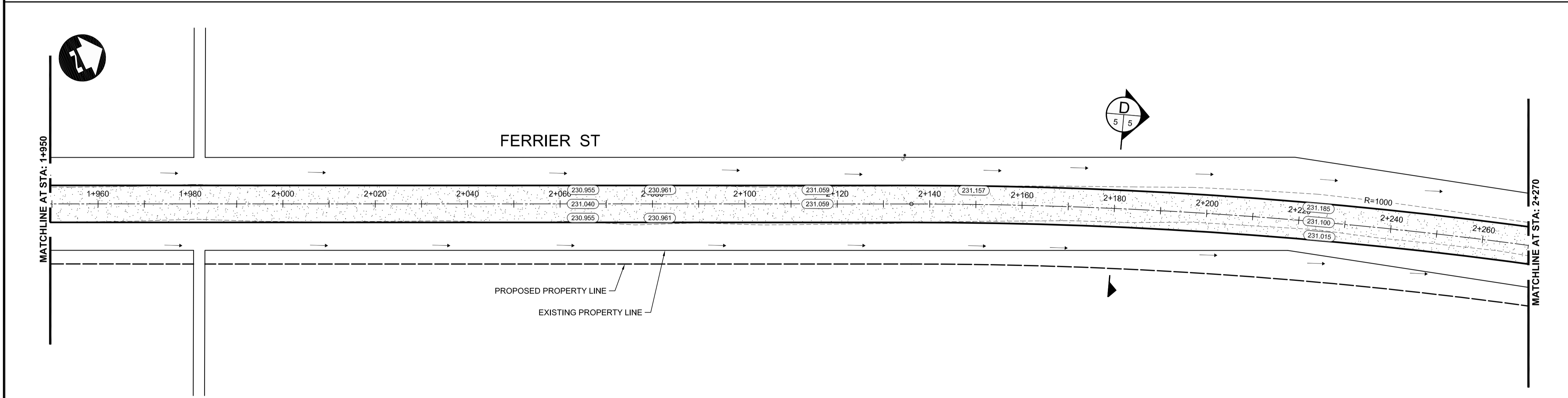


- CONSTRUCTION NOTES:**
- CONTRACTOR SHALL TAKE PRECAUTIONARY STEPS TO AVOID DAMAGE FROM CONSTRUCTION ACTIVITIES TO EXISTING BOULEVARDS AND TREES WITHIN THE LIMITS OF CONSTRUCTION.
 - LOCATION OF EXISTING SERVICES ARE TO BE CONFIRMED IN THE FIELD BY THE CONTRACTOR.
 - TIE-INS TO BE VERIFIED IN THE FIELD BY THE CONTRACT ADMINISTRATOR.
 - BOULEVARD REPLACEMENT TO BE FINALIZED IN THE FIELD BY THE CONTRACT ADMINISTRATOR.
 - ALL APPROACHES TO RECEIVE NEW CSP CULVERTS AS DIRECTED BY THE CONTRACT ADMINISTRATOR.
 - BACK SLOPES OF DITCHES TO BE GRADED BACK AT 4:1 WHERE POSSIBLE TO A MAX OF 2:1



D FERRIER ST - STA: 2+180
SCALE - H 1:100, V 1:50

METRIC
WHOLE NUMBERS INDICATE MILLIMETRES
DECIMALIZED NUMBERS INDICATE METRES

- WARNING**
- IF POWER EQUIPMENT OR EXPLOSIVES ARE TO BE USED FOR EXCAVATION ON THIS PROJECT THE CONTRACTOR MUST:
- NOTIFY THE GAS COMPANY OF THE PROPOSED LOCATION OF EXCAVATION.
 - TAKE PRECAUTION TO AVOID DAMAGE TO GAS COMPANY INSTALLATIONS SEE PROVINCIAL REGULATION 210/72 FOR DETAILS.
 - OBTAIN EXCAVATION PERMITS PRIOR TO CONSTRUCTION.

APEGM
Certificate of Authorization
Dillon Consulting Limited (MB)
No. 1789 Date: 03/11/11

150 WM	WATERMAIN	150 WM	HYDRO	HYDRO	HYDRO	150 mm W.M.	WATERMAIN	150 mm W.M.
HYDRANT	HYDRANT	MTS	MTS	MTS	MTS	MTS	HYDRANT	MTS
VALVE	VALVE						VALVE	
300 LDS	LAND DRAINAGE SEWER	300 LDS				300 mm L.D.S.	LAND DRAINAGE SEWER	300 mm L.D.S.
250 WWS	WASTE WATER SEWER	250 WWS				250 mm W.W.S.	WASTE WATER SEWER	250 mm W.W.S.
MANHOLE	MANHOLE						MANHOLE	
CATCH BASIN	CATCH BASIN						CATCH BASIN	
CURB INLET	CURB INLET						CURB INLET	
JUNCTIONS	JUNCTIONS						JUNCTIONS	
CULVERT	CULVERT						CULVERT	
100 GAS	GAS	100 GAS					GAS	
EXISTING	LEGEND-PLAN	PROPOSED	EXISTING	LEGEND-PLAN	PROPOSED	EXISTING	LEGEND-PROFILE	PROPOSED

UNDERGROUND STRUCTURES

SUPPLY, U/G STRUCTURES COMMITTEE DATE

NOTE:
LOCATION OF UNDERGROUND STRUCTURES AS SHOWN ARE BASED ON THE BEST INFORMATION AVAILABLE, BUT NO GUARANTEE IS GIVEN THAT ALL EXISTING UTILITIES ARE SHOWN OR THAT THE GIVEN LOCATIONS ARE EXACT. CONFIRMATION OF EXISTENCE AND EXACT LOCATION OF ALL SERVICES MUST BE OBTAINED FROM THE INDIVIDUAL UTILITIES BEFORE PROCEEDING WITH CONSTRUCTION.

B.M. ELEV.				
DESIGNED BY	RTP			
DRAWN BY	TJH			
CHECKED BY	ORIGINAL SIGNED BY TARAN J. PETERS			
APPROVED BY	ORIGINAL SIGNED BY DAVID P. KRAHN			
HOR. SCALE	1:500			
VERTICAL	1:25			
REVISIONS		DATE	BY	
2	ISSUED FOR TENDER	03/11/11	TJP	
1	ISSUED FOR REVIEW	02/17/11	TJP	
NO.	REVISIONS	DATE	BY	

DILLON CONSULTING

DESIGNED BY RTP
DRAWN BY TJH
CHECKED BY ORIGINAL SIGNED BY TARAN J. PETERS
APPROVED BY ORIGINAL SIGNED BY DAVID P. KRAHN

HOR. SCALE 1:500
VERTICAL 1:25

RELEASED FOR CONSTRUCTION
ORIGINAL SIGNED BY BRENT KELLET, C.E.T.
DATE 03/11/2011

ENGINEER'S SEAL
PROVINCE OF MANITOBA
REGISTERED PROFESSIONAL ENGINEER
T.J. PETERS
03/11/2011
Member 22309

CONSULTANT PROJECT NUMBER
09-2696

THE CITY OF WINNIPEG
PUBLIC WORKS DEPARTMENT

2011 GRANULAR ROADWAY IMPROVEMENTS
FERRIER STREET
TEMPLETON AVENUE TO MURRAY AVENUE

CITY DRAWING NUMBER -
SHEET 05 OF 06
CONSULTANT DRAWING NUMBER -

PLAN-PROFILE - FERRIER ST - STA. 1+950 TO 2+270

G:\CAD\092696\Contract\Current\Plan-Profile-Section.dwg