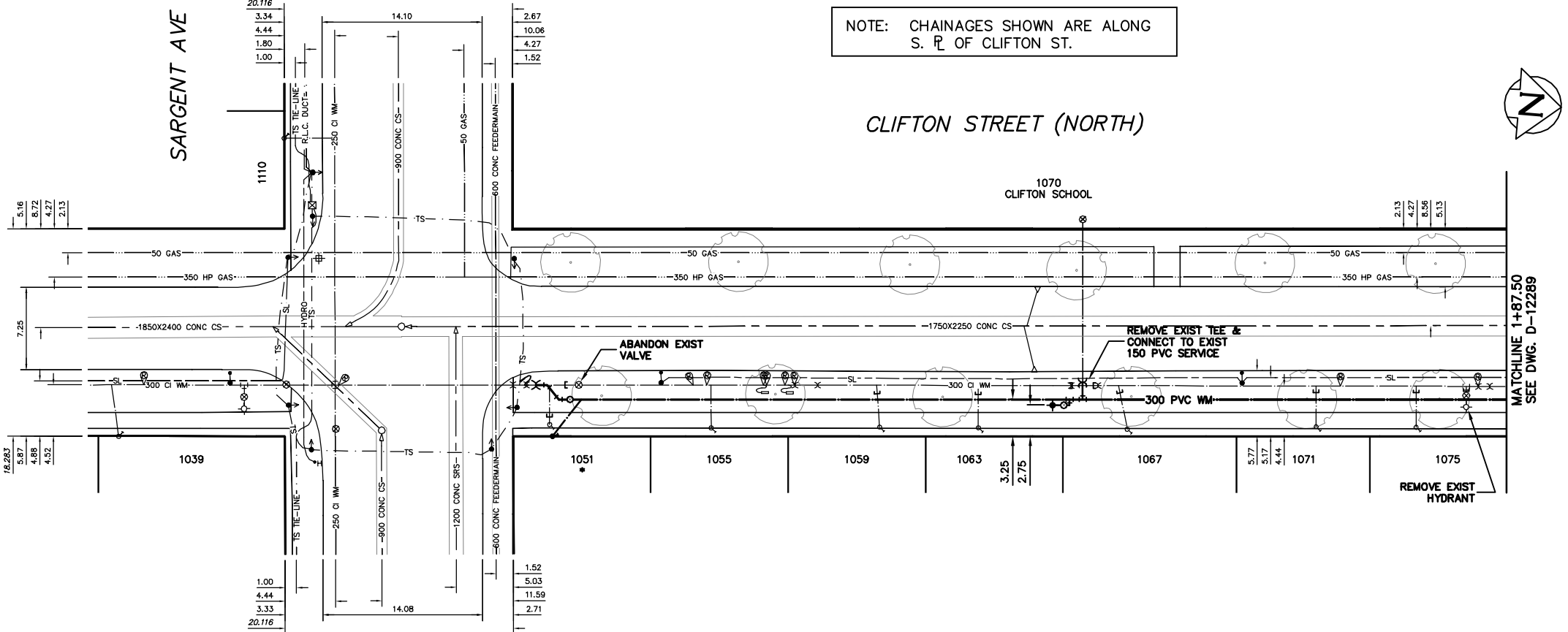


- CONSTRUCTION NOTES**
1. EXPOSE EXISTING WATERMAIN & CONFIRM INVERTS PRIOR TO CONSTRUCTION.
  2. LOCATION OF ALL SERVICES TO BE CONFIRMED IN THE FIELD.
  3. INSTALL WATERMAIN BY TRENCHLESS METHODS.
  4. TRENCHES AND EXCAVATIONS WITHIN 1 METRE OF A PAVED AREA INCLUDING SIDEWALKS SHALL BE CLASS 3 BACKFILL.
  5. ALL MATERIALS SHALL CONFORM TO THE CITY OF WINNIPEG STANDARD CONSTRUCTION SPECIFICATIONS.
  6. MINIMUM COVER TO TOP OF WATERMAIN SHALL BE 2.4 m.
  7. REPLACE ALL EXISTING LEAD SERVICES FROM PROPOSED WATERMAIN TO R.
  8. NOTIFY ALL AFFECTED RESIDENTS AND BUSINESSES 24 HOURS IN ADVANCE OF ANY WATER SHUTDOWNS OR DISRUPTION OF SERVICE.



**WATER SERVICE INFORMATION**

ADDRESS	SIZE(mm) & TYPE (STREET)	SIZE(mm) & TYPE (PROP.)	SHORT & LONG MEASUREMENT	CORP. LOCATION	REMARKS
1039 CLIFTON ST RESIDENTIAL	20 LEAD	20 COPPER	8.39 SNHL	0.62 S OF S/C	-
1051 CLIFTON ST RESIDENTIAL	20 COPPER	20 COPPER	14.83 SSL SARGENT	OPP OF S/C	RENEW TO R W/ 20 COPPER
1055 CLIFTON ST RESIDENTIAL	20 COPPER	20 COPPER	2.84>NNL SARGENT	OPP OF S/C	-
1059 CLIFTON ST RESIDENTIAL	20 COPPER	20 COPPER	3.71 NSHL	OPP OF S/C	-
1063 CLIFTON ST RESIDENTIAL	20 COPPER	20 COPPER	17.05>NNL SARGENT	OPP OF S/C	-
1067 CLIFTON ST RESIDENTIAL	20 COPPER	20 COPPER	5.88 NSHL	0.31 S OF S/C	-
1070 CLIFTON ST COMMERCIAL	20 COPPER	20 COPPER	31.83>NNL SARGENT	OPP OF S/C	-
1071 CLIFTON ST RESIDENTIAL	20 COPPER	20 COPPER	4.46 SNHL	0.83 S OF S/C	-
1075 CLIFTON ST RESIDENTIAL	20 COPPER	20 COPPER	53.77>NNL SARGENT	OPP VALVE	-
1075 CLIFTON ST RESIDENTIAL	20 COPPER	20 COPPER	33.08 NSBL	OPP OF S/C	-
1075 CLIFTON ST RESIDENTIAL	20 COPPER	20 COPPER	50.07>NNL SARGENT	OPP OF S/C	-
1075 CLIFTON ST RESIDENTIAL	20 COPPER	20 COPPER	3.08 SNHL	OPP OF S/C	-
1075 CLIFTON ST RESIDENTIAL	20 COPPER	20 COPPER	70.26>NNL SARGENT	OPP OF S/C	-
1075 CLIFTON ST RESIDENTIAL	20 COPPER	20 COPPER	1.98 SNHL	OPP OF S/C	-
1075 CLIFTON ST RESIDENTIAL	20 COPPER	20 COPPER	79.07>NNL SARGENT	OPP OF S/C	-

\* SERVICES TO BE RENEWED TO R UPON CONFIRMATION BY THE CONTRACTOR OF EXISTING LEAD SERVICE. OBTAIN APPROVAL FROM CONTRACT ADMINISTRATOR PRIOR TO RENEWAL.

**METRIC**  
WHOLE NUMBERS INDICATE MILLIMETRES  
DECIMALIZED NUMBERS INDICATE METRES

**WARNING**  
IF POWER EQUIPMENT OR EXPLOSIVES ARE TO BE USED FOR EXCAVATION ON THIS PROJECT THE CONTRACTOR MUST:  
1) NOTIFY THE GAS COMPANY OF THE PROPOSED LOCATION OF EXCAVATION.  
2) TAKE PRECAUTION TO AVOID DAMAGE TO GAS COMPANY INSTALLATIONS.  
SEE PROVINCIAL REGULATION 210/72 FOR DETAILS

NOTE: ALL VALVES TO BE INSTALLED COUNTERCLOCKWISE TO CLOSE

200 WM	WATERMAIN	200 WM	SL, HYDRO	150 WM	WATERMAIN	150 WM	LOCATION APPROVED	B.M. ELEV.	FIELD BOOK #	<p><b>CITY OF WINNIPEG</b> WATER AND WASTE ENGINEERING DIVISION</p>	ENGINEER'S SEAL	<p><b>THE CITY OF WINNIPEG</b> WATER AND WASTE DEPARTMENT</p>	<p>2011 WATERMAIN RENEWALS CONTRACT 2 CLIFTON STREET (NORTH) SARGENT AVENUE TO 87.50 N OF SARGENT AVENUE</p>	<p>SHEET 6 OF 12 CITY DRAWING NUMBER D-12288</p>
525 LDS	LAND DRAINAGE SEWER	525 LDS	50 GAS	300 LDS	LAND DRAINAGE SEWER	300 LDS	UNDERGROUND STRUCTURES	POSTED TO LBS	DESIGNED BY: RC		CHECKED BY: SC			
375 WWS	WASTEWATER SEWER	375 WWS	SURVEY BAR	250 WWS	WASTEWATER SEWER	250 WWS	DATE		DRAWN BY: CJH	APPROVED BY: KZ				
MANHOLE	○	MANHOLE	FENCE	○	MANHOLE	○	NOTE:		HOR. SCALE: 1:250	RELEASED FOR CONSTRUCTION				
CATCH BASIN	□	CATCH BASIN	POLE - HYDRO, MTS	□	CATCH BASIN	□	LOCATION OF UNDERGROUND STRUCTURES AS SHOWN ARE BASED ON THE BEST INFORMATION AVAILABLE BUT NO GUARANTEE IS GIVEN THAT ALL EXISTING UTILITIES ARE SHOWN OR THAT THE GIVEN LOCATIONS ARE EXACT. CONFIRMATION OF EXISTENCE AND EXACT LOCATION OF ALL SERVICES MUST BE OBTAINED FROM THE INDIVIDUAL UTILITIES BEFORE PROCEEDING WITH CONSTRUCTION.		VERTICAL: 1:50					
CURB INLET	▽	CURB INLET	CURB STOP	▽	CURB INLET	▽			NO. REVISIONS	DATE	BY			
REDUCER	∠	REDUCER	GUY ANCHOR	∠	REDUCER	∠			DATE	2011 01 17	DATE			
COUPLER	X	COUPLER	LIGHT STANDARD	X	COUPLER	X								
ANODE	⊕	ANODE	TREE	⊕	ANODE	⊕								
EXISTING	LEGEND-PLAN	PROPOSED	EXISTING	LEGEND-PLAN	PROPOSED	EXISTING	LEGEND-PROFILE	PROPOSED						