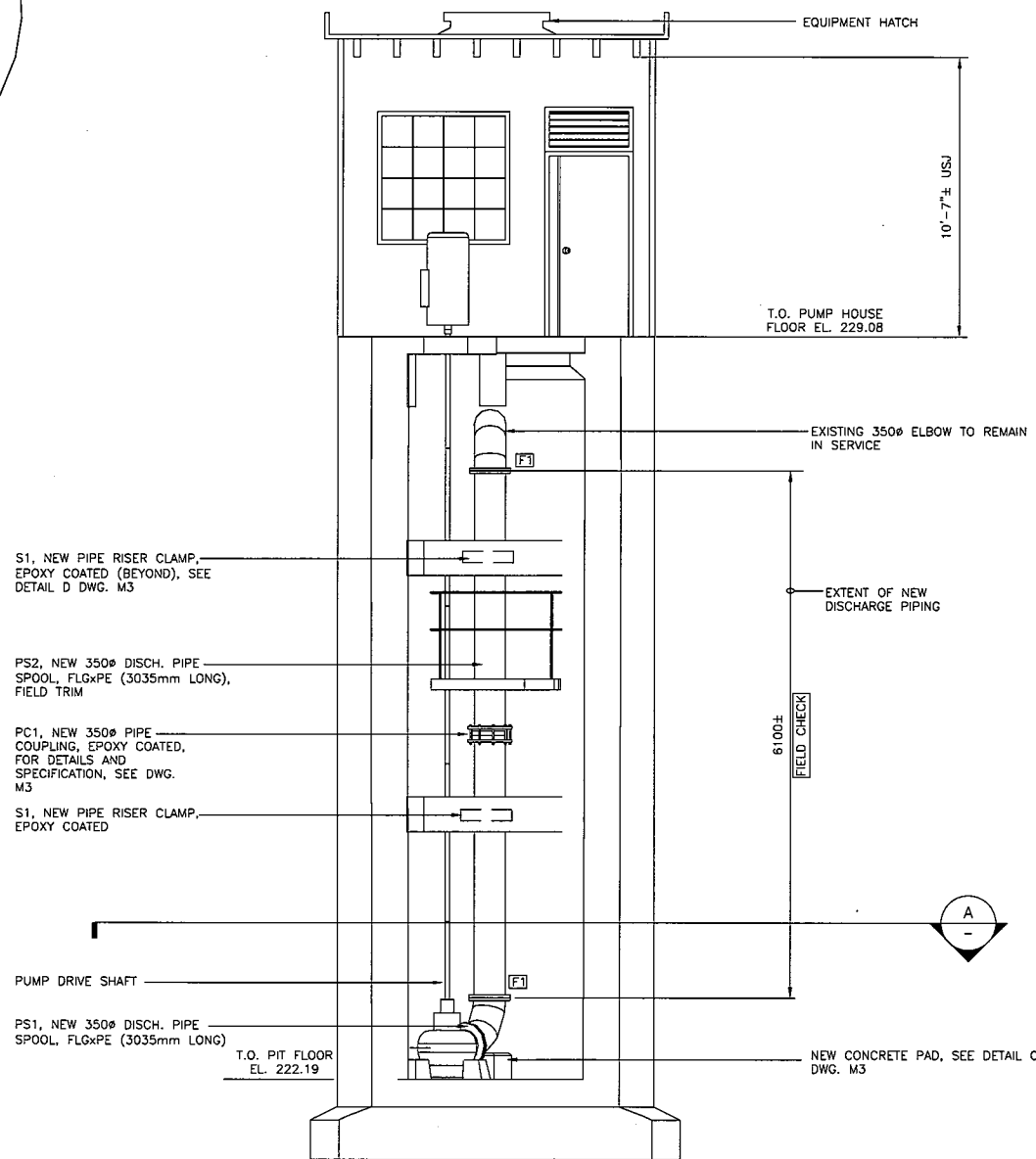


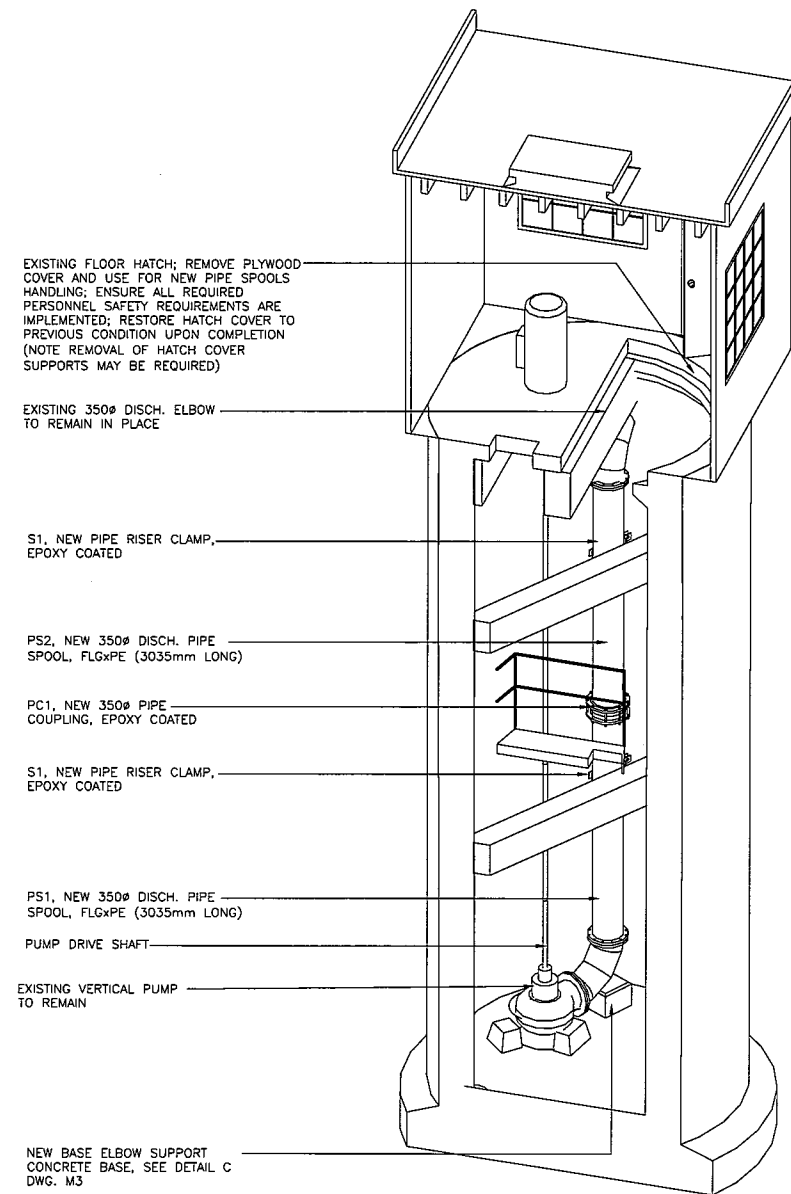
A LOWER PUMP PIT SECTION
SCALE 1:40

KEY NOTES

- 1 EXISTING VERTICAL PUMP, TO REMAIN IN SERVICE
- 2 EXISTING BASE ELBOW TO REMAIN IN SERVICE
- 3 NEW VERTICAL DISCHARGE FLG&PE PIPE
- 4 EXISTING BASE ELBOW NEW CONCRETE PAD BASE, SEE DETAIL C DWG. M3



B PUMP STATION - ELEVATION LOOKING NORTH
SCALE 1:40



C PUMP STATION - ISOMETRIC
NTS

SCOPE OF WORK
 CONTRACTOR SHALL SUPPLY ALL LABOR AND MATERIALS FOR COMPLETION OF WORK AS FOLLOWS
 -REMOVE EXISTING PLYWOOD FLOOR HATCH TO EXTENT REQUIRED FOR REMOVING EXISTING PIPE SPOOLS AND LOWERING NEW PIPE SPOOLS INTO SUMP PIT; ENSURE WORK AREA IS SAFE; BLOCK FREE ACCESS TO OPENING
 -PROVIDE FALL ARRESTORS AND TEMPORARY SAFETY HANDRAIL AROUND HATCH OPENING. IMPLEMENT ALL SAFETY MEASURES TO ENSURE A SAFE WORKING AREA.
 -REMOVE EXISTING FLANGED PIPE SPOOLS FROM PUMP PIT; CONFIRM OVERALL LENGTH BETWEEN END FLANGES
 -REMOVE EXISTING BASE ELBOW CONCRETE SUPPORT BASE, CLEAN AND ROUGH UP FLOOR
 -INSTALL NEW REINFORCED CONCRETE ELBOW BASE, AS SHOWN IN DETAIL C DWG. M3
 -FABRICATE 2 NEW CUSTOM FLANGES TO MATCH EXISTING
 -FABRICATE 2 NEW PIPE SPOOLS, FLG&PE, ALLOW 300mm FIELD TRIM ON ONE OF THE SPOOLS
 -FIELD TRIM PS2 TO SUIT SITE MEASURED LENGTH BETWEEN TOP AND BOTTOM ELBOW FLANGES
 -LOWER PIPE SPOOLS INTO PIT, INSTALL PIPE COUPLING & SUPPORT PIPES FROM CONCRETE BEAMS
 -REINSTATE PLYWOOD FLOOR HATCH AND HATCH SUPPORTS TO ORIGINAL CONDITION

GENERAL NOTES

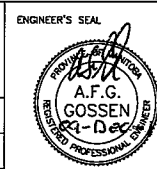
- 1. PERFORM ALL WORK IN ACCORDANCE WITH ALL APPLICABLE CODES, STANDARDS AND PROVINCIAL MECHANICAL ENGINEERING & INSPECTIONS BRANCH REQUIREMENTS.
- 2. COORDINATE WORKS WITH OTHER SUB-TRADES. REFER TO SPECIFIC DETAILS FOR CUTTING AND SEALING PENETRATIONS THROUGH OPENINGS & FIRE SEPARATIONS.
- 3. REFER TO TECHNICAL SPECIFICATIONS FOR PIPING AND FITTINGS MATERIAL SPECIFICATIONS AND INSTALLATION CONSTRUCTION REQUIREMENTS.
- 4. SUPPORT PIPING TO SUIT.
- 5. INVESTIGATE SITE PRIOR TO CONSTRUCTION TO CONFIRM ALL DIMENSIONS AND INSTALLATION REQ'S.
- 6. PERFORM ALL CUTTING & PATCHING NECESSARY FOR ANY REQUIRED OPENINGS.
- 7. NOT ALL EQUIPMENT/PIPING, ETC. IS SHOWN.

APECA
 Certificate of Authorization
 Alliance Engineering Services Inc.
 No.2906 Date: _____

NO.	REVISIONS	DATE	BY
0	ISSUED FOR TENDER	2011-02-23	AFG
A	ISSUED FOR REVIEW	2011-02-24	AFG

ALLIANCE
 Engineering Services Inc.

DESIGNED BY	AFG/AS	CHECKED BY	AFG
DRAWN BY	AS	APPROVED BY	
HOR. SCALE	1:50	RELEASED FOR CONSTRUCTION	
VERTICAL		DATE	2011-02-23



CONSULTANT DRAWING NO.
M2



THE CITY OF WINNIPEG
 WATER AND WASTE DEPARTMENT

RUE DE LA VERENDRYE PUMPING STATION
 FLOOD PUMPING STATION
 PUMP DISCHARGE PIPE REPLACEMENT
 NEW CONDITIONS - PLAN, ELEVATION & ISOMETRIC

SHEET 1 OF 1
 CITY DRAWING NUMBER
 1-0154L-M0002-001