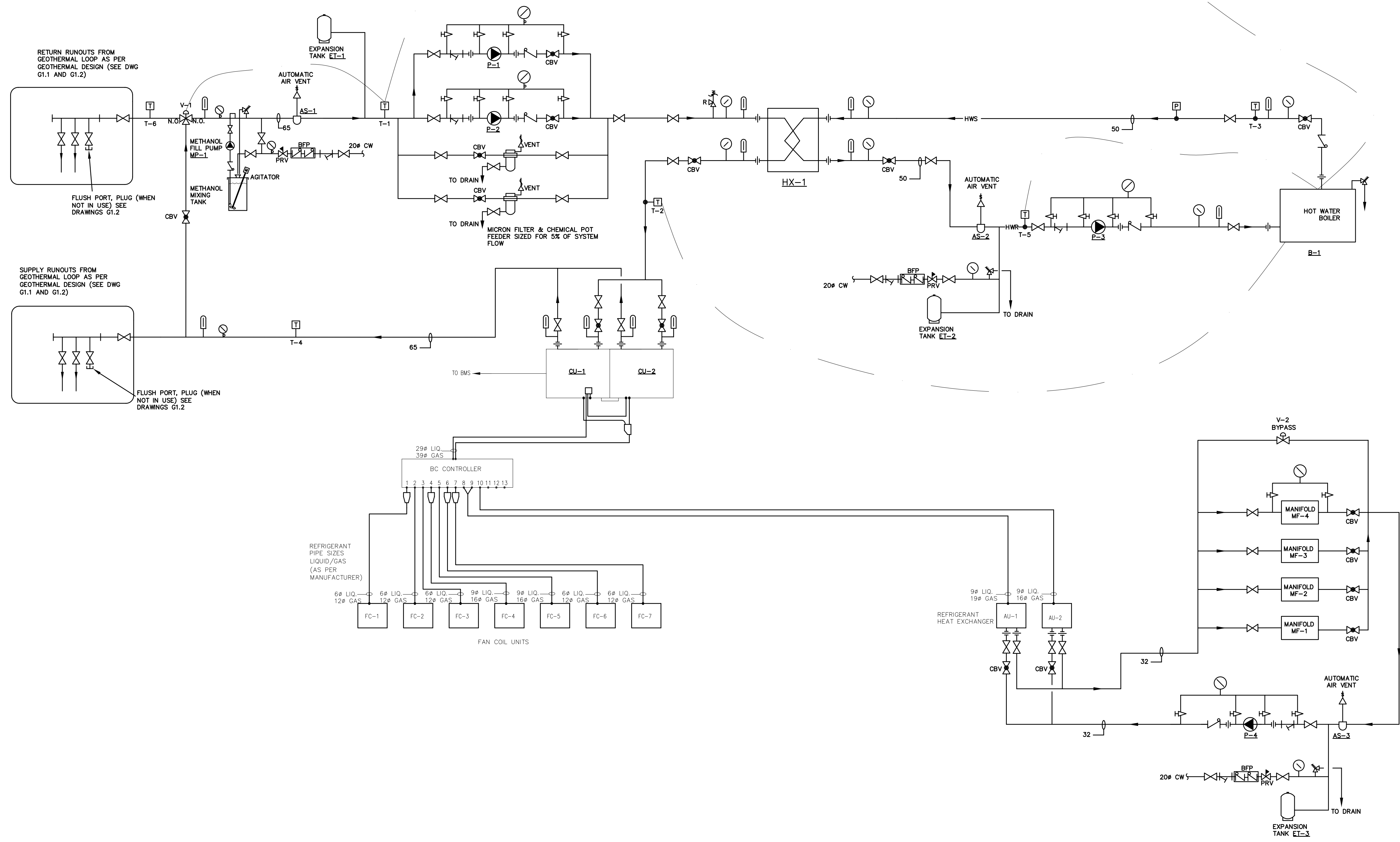


ISSUES:		
NO.	DATE	DESCRIPTION
1	MAY 14, 2010	ISSUED FOR CLIENT REVIEW
2	MAY 19, 2010	ISSUED FOR CLIENT REVIEW
3	SEPT. 24, 2010	ISSUED FOR BUILDING PERMIT
4	DEC. 10, 2010	ISSUED FOR TENDER



VANDERWESTEN RUTHERFORD MANTECON INC.
CONSULTING STRUCTURAL MECHANICAL ELECTRICAL ENGINEERS
LONDON · HAMILTON · WINDSOR · OTTAWA
724 COLONEL TALBOT ROAD, LONDON, ONTARIO, N6L 1R8
PHONE: (519) 882-9041 · FAX: (519) 882-9059 · www.vrmeng.com

REVIEW ALL DRAWINGS AND VERIFY ALL DIMENSIONS AT THE SITE. DO NOT SCALE THE DRAWINGS. REPORT ALL DISCREPANCIES TO THE ENGINEER BEFORE PROCEEDING WITH ANY CONSTRUCTION OR SHOP FABRICATION. ALL DRAWINGS, SPECIFICATIONS AND RELATED DOCUMENTS ARE THE COPYRIGHT PROPERTY OF VANDERWESTEN RUTHERFORD MANTECON AND MUST BE RETURNED UPON REQUEST. REPRODUCTION OF DRAWINGS, SPECIFICATIONS AND RELATED DOCUMENTS IN PART OR WHOLE IS FORBIDDEN WITHOUT THE CONSULTANT'S WRITTEN PERMISSION.

PROJECT NAME:
NEW WINNIPEG STATION No. 27 PROJECT
SAGE CREEK, WINNIPEG, MANITOBA

DRAWING TITLE:
PIPING SCHEMATIC

PROJECT NORTH:
DATE: **DECEMBER 10, 2010**
ISSUED: **DECEMBER 10, 2010**
DRAWN BY: **MC**
CHECKED BY: **WAR**

STAMP: VRM #10-013

SCALE: **NTS**
PROJECT NO.: **2261**
DATE: **DECEMBER 10, 2010**
ISSUED: **DECEMBER 10, 2010**
DRAWN BY: **MC**
CHECKED BY: **WAR**
M5.1

NOT VALID FOR CONSTRUCTION UNLESS SIGNED