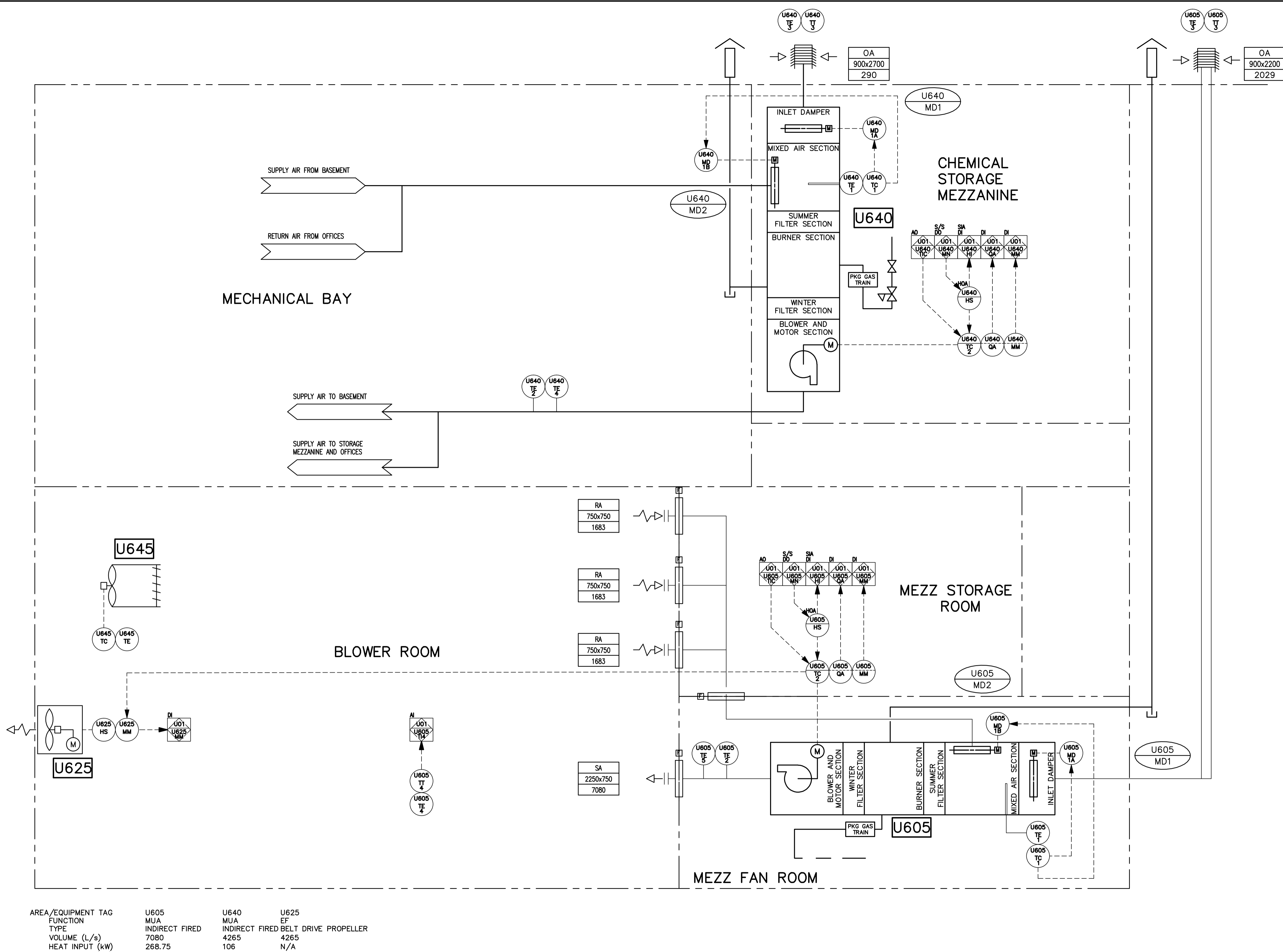


CW-10-M680-1
 File Name: P:\Projects\2009\09-0754-08\DocControl\ToBeIssued\DWG\ELECTRICAL\1-0103V-P0004-001-Rev 00.dwg - Tab: 1-0103V-P0004-001 Plotted By: GNeilson 12/16/2010 [Thu 4:15pm]



SEQUENCE OF OPERATION

DEVICE LISTING

TAG	DESCRIPTION
NON-PACKAGED	
U605-TE/TT-4	MECHANICAL BAY SPACE TEMPERATURE
U625-HS	EF U625 ON/OFF SWITCH
U625-MM	EF U625 RUN STATUS
PACKAGED	
U605-HS	EXHAUST FAN U605 HAND/OFF/AUTO SWITCH
U605-TC2	MUA U605 TEMPERATURE CONTROLLER
U605-MM	MUA U605 RUN STATUS
U605-QA	MUA U605 FAILURE ALARM
U605-MD1A	MUA U605 INLET DAMPER (FC)
U605-MD1B	MUA U605 RETURN AIR DAMPER (FO)
U605-TE/TC-1	MUA U605 MIXED AIR SECTION CONTROLLER
U605-TE2	MUA U605 DISCHARGE TEMPERATURE TRANSMITTER
U605-TE/TT-3	MUA U605 OUTDOOR AIR TEMPERATURE
U605-TE5	MUA U605 FREEZE PROTECTION
U640	
U640-HS	EXHAUST FAN U640 HAND/OFF/AUTO SWITCH
U640-TC2	MUA U640 TEMPERATURE CONTROLLER
U640-MM	MUA U640 RUN STATUS
U640-QA	MUA U640 FAILURE ALARM
U640-MD1A	MUA U640 INLET DAMPER (FC)
U640-MD1B	MUA U640 RETURN AIR DAMPER (FO)
U640-TE/TC-1	MUA U640 MIXED AIR SECTION CONTROLLER
U640-TE2	MUA U640 DISCHARGE TEMPERATURE TRANSMITTER
U640-TE/TT-3	MUA U640 OUTDOOR AIR TEMPERATURE
U640-TE4	MUA U640 FREEZE PROTECTION
U645	
U645-TE/TC	UNIT HEATER THERMOSTAT CONTROL

AREA/EQUIPMENT TAG	U605	U640	U625
FUNCTION	MUA	MUA	EF
TYPE	INDIRECT FIRED	INDIRECT FIRED	BELT DRIVE PROPELLER
VOLUME (L/s)	7080	4265	4265
HEAT INPUT (kW)	268.75	106	N/A
ELEC. LOAD (kW)			

GENERAL NOTES



NO.	REVISIONS	DATE	BY
00	ISSUED FOR TENDER	2010-12-21	REW

ALLIANCE
Engineering Services Inc.

DESIGNED BY: DDW
CHECKED BY: REW

DRAWN BY: GCN
APPROVED BY: REW

HOR. SCALE: N.T.S.
VERTICAL: N.T.S.

RELEASED FOR CONSTRUCTION

DATE: 2009 11 17

ENGINEER'S SEAL

R.E. WILLMS
Member 3833

TENDER No. UP6.1
FILENAME: 1-0103V-P0004-001-Rev 00.dwg
PLOT DATE: 2010/12/16

THE CITY OF WINNIPEG
WATER AND WASTE DEPARTMENT

2010 HVAC REPLACEMENT AND ASSOCIATED WORKS
WEWPCC
AREA U - UTILITY BUILDING
PROCESS & INSTRUMENTATION DIAGRAM

SHEET 1 OF 3
CITY DRAWING NUMBER
1-0103V-P0004-001