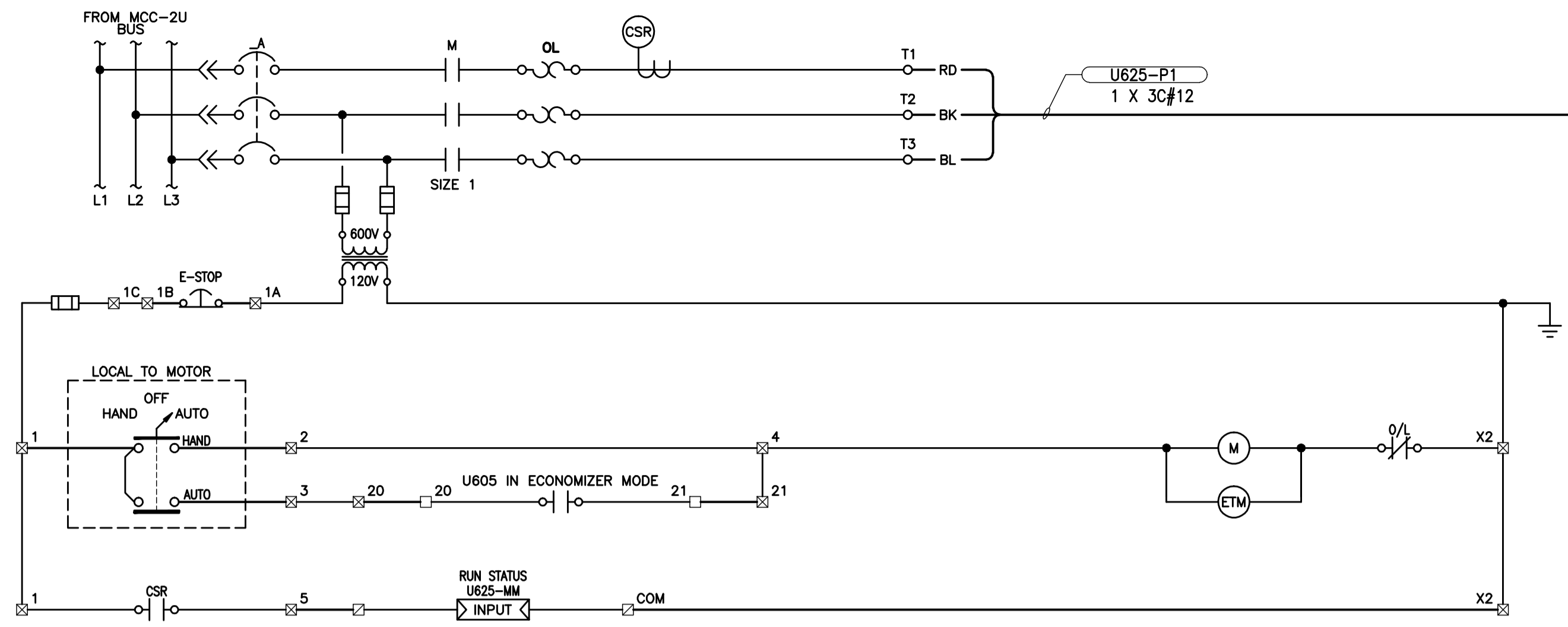


CW-9-M564-1
 File Name: P:\Projects\2009\09-0754-08\Doc\Control\ToBeIssued\DWG\ELECTRICAL\1-0103V-E0017-001-Rev 00.dwg - Tab: 1-0103V-E0017-001-Rev 00.dwg - Thu 4:20pm



LEGEND

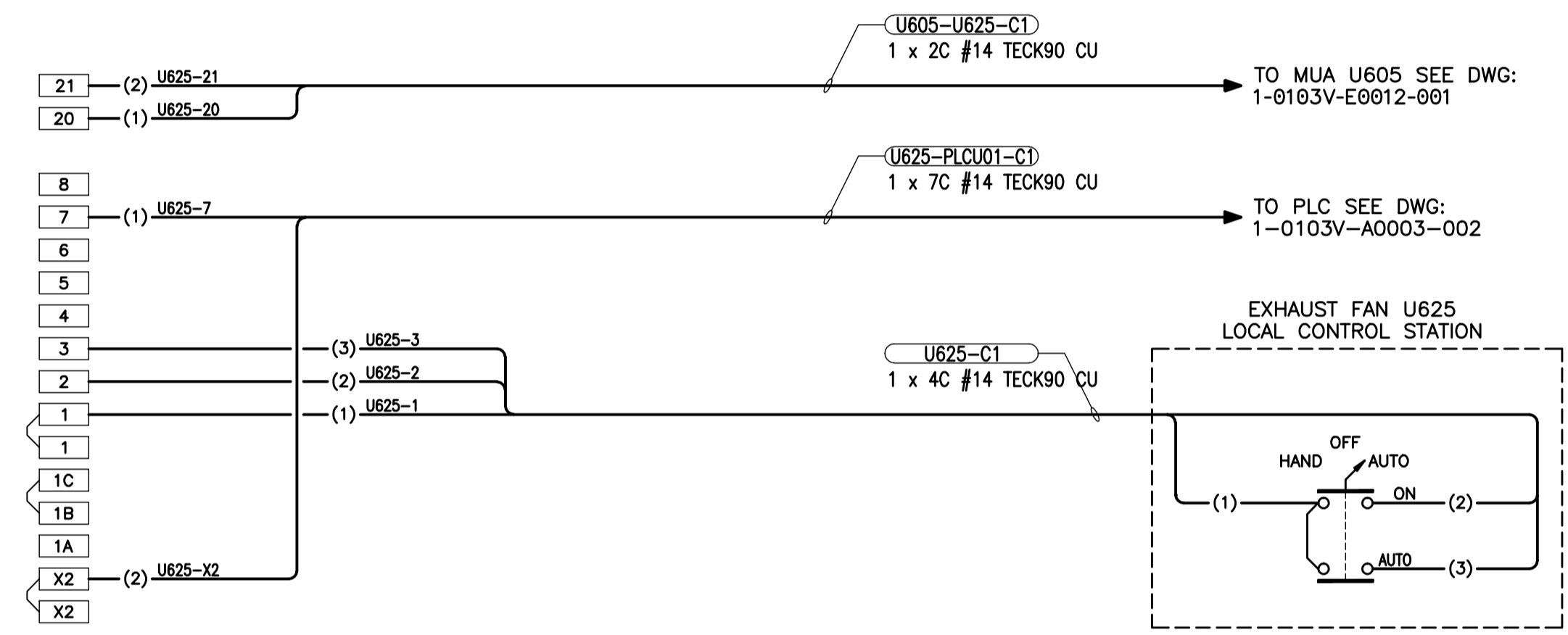
- ☐ PLC TERMINALS
- ☒ EF H630 STARTER TERMINALS
- ☑ EF H730 STARTER TERMINALS
- MUA H600 TERMINALS
- MUA H650 TERMINALS
- FIELD WIRING
- PANEL WIRING
- () CONDUCTOR IDENTIFICATION
- WIRE CONNECTION
- PILOT LIGHT
- ETM ELAPSED TIME METER
- ▶ OUTPUT PLC OUTPUT
- ◀ INPUT PLC INPUT

NOTES:

1. CONTACT CLOSES WHEN ADEQUATE CURRENT IS DRAWN TO PROVE EXHAUST FAN IS RUNNING.
2. LIMIT SWITCH CONTACT CLOSES WHEN DAMPER PROVES FULLY OPEN.
3. LIMIT SWITCH CONTACT CLOSES WHEN DAMPER PROVES FULLY CLOSED.

CONSTRUCTION NOTES:

1. REPLACE EXISTING STARTER WRAPPER WITH NEW WITH FEATURES SHOWN ON SCHEMATIC.



APEGN
 Certificate of Authorization
 KGS Group
 No. 245 Date: 2010/12/21

KGS GROUP
 CONSULTING ENGINEERS

B.M. ELEV.	FIELD BOOK #:
POSTED TO LBIS	
DESIGNED BY	DDW
CHECKED BY	REW
DRAWN BY	GCN
APPROVED BY	REW
HDR. SCALE	N.T.S.
VERTICAL	N.T.S.
RELEASED FOR CONSTRUCTION	
NO. REVISIONS	DATE BY
00	ISSUED FOR TENDER 2010-12-21 REW
	2009 09 29

ALLIANCE
 Engineering Services Inc.

ENGINEER'S SEAL
 PROVINCE OF MANITOBA
R.E. WILLMS
 Member 3833
 TENDER No. **UE6.9**
 FILENAME: 1-0103V-E0017-001-Rev 00.dwg
 PLOT DATE: 2010/12/16

THE CITY OF WINNIPEG
 WATER AND WASTE DEPARTMENT

2010 HVAC REPLACEMENT AND ASSOCIATED WORKS
WEWPCC
 AREA U - UTILITY BUILDING
 EF=U625 FVNR SCHEMATIC & WIRING DIAGRAM

SHEET 1 OF 1
 CITY DRAWING NUMBER
 1-0103V-E0017-001