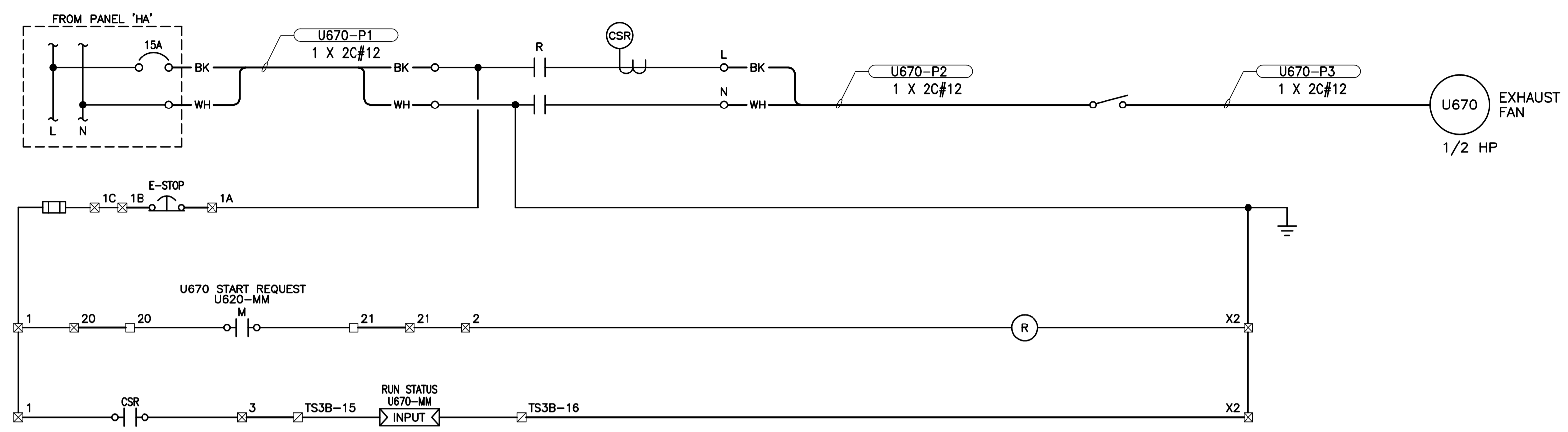


CW-9-M564-1
 File Name: P:\Projects\2009\09-0754-08\Doc\Control\ToBeIssued\DWG\ELECTRICAL\1-0103V-E0015-001-Rev 00.dwg - Tab: 1-0103V-E0015-001-Rev 00.dwg - Thu 4:21pm

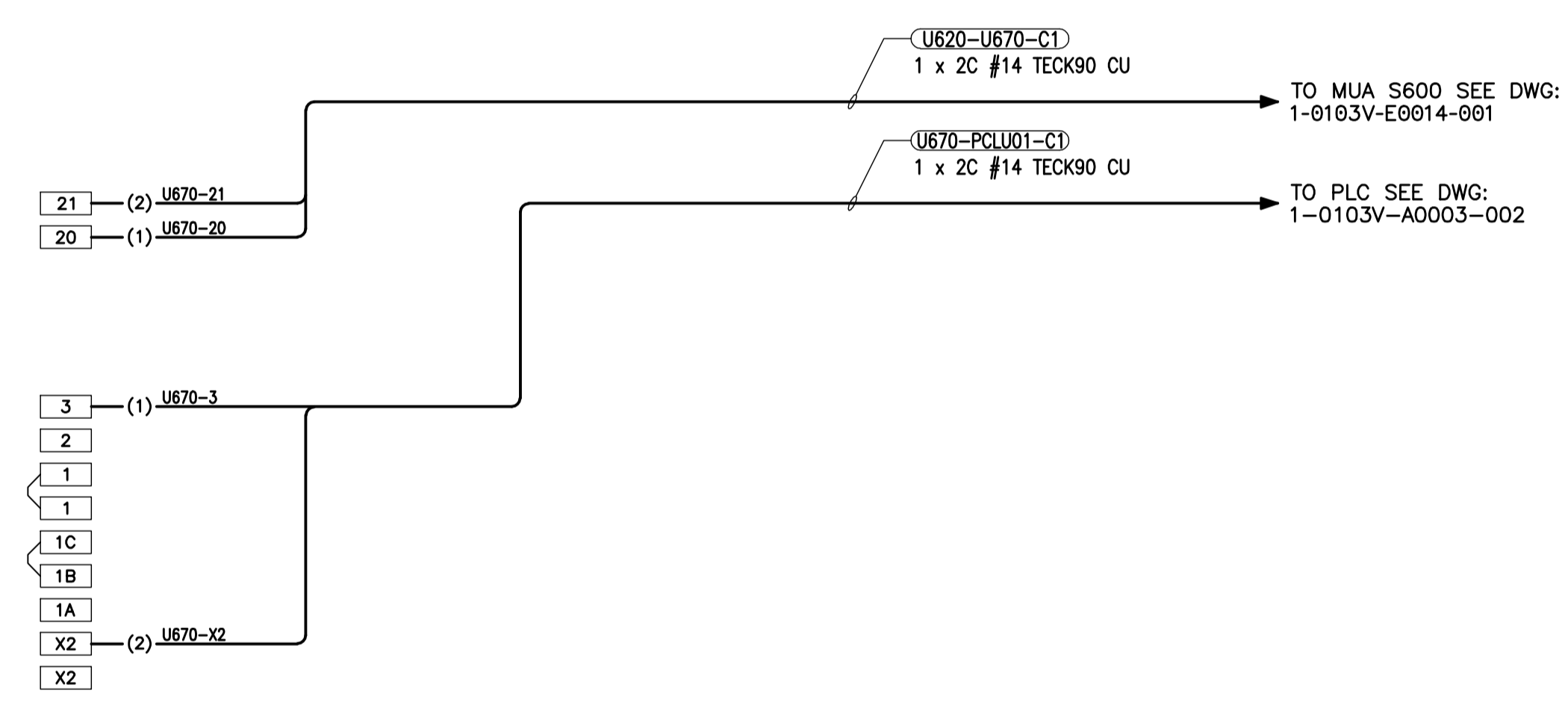


LEGEND

- ☒ PLC TERMINALS
- ☒ STARTER TERMINALS
- ☐ MUA U620 TERMINALS
- FIELD WIRING
- PANEL WIRING
- () CONDUCTOR IDENTIFICATION
- WIRE CONNECTION
- ⊙ PILOT LIGHT
- ETM ELAPSED TIME METER
- ◀ OUTPUT ▶ PLC OUTPUT
- ▶ INPUT ◀ PLC INPUT

NOTES:

1. CONTACT CLOSES WHEN ADEQUATE CURRENT IS DRAWN TO PROVE EXHAUST FAN IS RUNNING.



 Certificate of Authorization KGS Group No. 245 Date: 2010/12/21		B.M. ELEV. .	FIELD BOOK #:		ENGINEER'S SEAL			2010 HVAC REPLACEMENT AND ASSOCIATED WORKS WEWPCC AREA U - UTILITY BUILDING EF-U670 SCHEMATIC & WIRING DIAGRAM	SHEET 1 OF 1
		DESIGNED BY DDW CHECKED BY DRAWN BY GCN APPROVED BY HDR. SCALE N.T.S. RELEASED FOR CONSTRUCTION VERTICAL N.T.S.			TENDER No. UE6.7 FILENAME: 1-0103V-E0015-001-Rev 00.dwg PLOT DATE: 2010/12/16				CITY DRAWING NUMBER 1-0103V-E0015-001
NO. REVISIONS DATE BY		00 ISSUED FOR TENDER 2010-12-21 REW		2009 09 29 DATE					