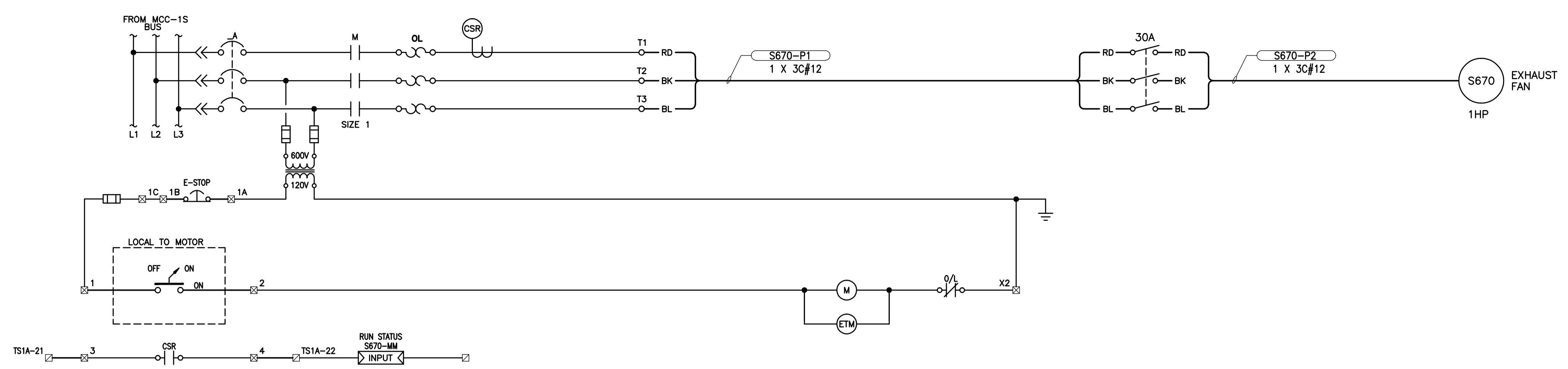


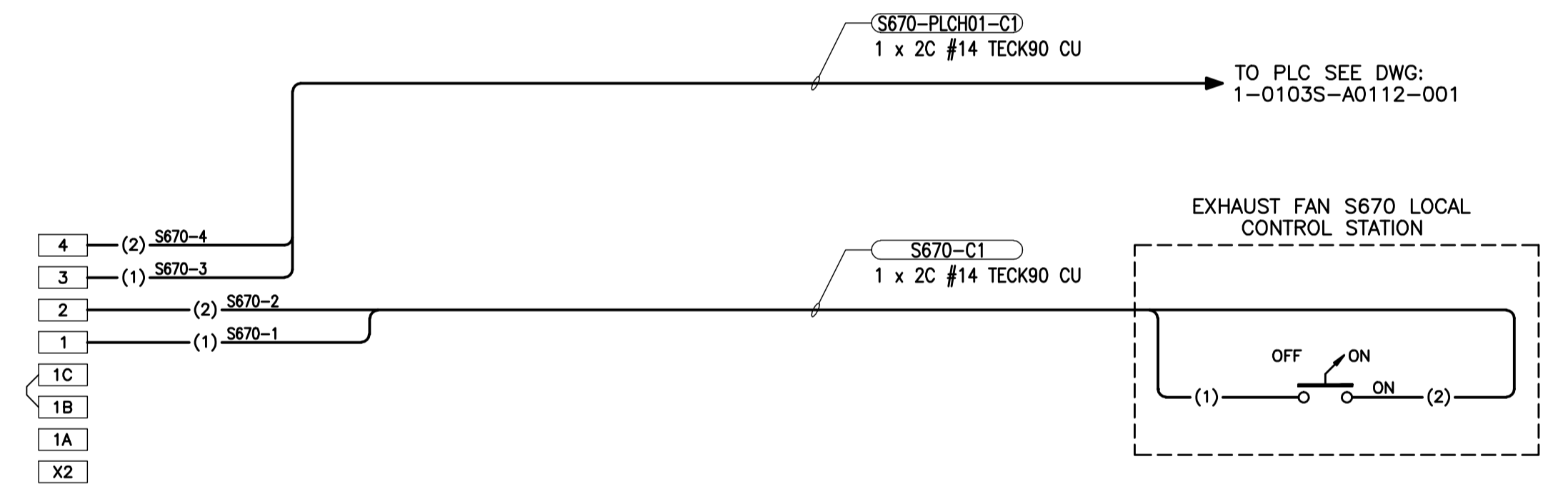
CW-9-M564-1  
 File Name: P:\Projects\2009\09-0754-08\Doc.Control\ToBeIssued\DWG\ELECTRICAL\1-0103S-E0027-001-Rev 00.dwg - Tab: 1-0103S-E0027-001-Rev 00.dwg - Tab: 1-0103S-E0027-001-Rev 00.dwg [Thu 4:41 pm]



- LEGEND**
- ☐ PLC TERMINALS
  - ☒ STARTER TERMINALS
  - FIELD WIRING
  - PANEL WIRING
  - ( ) CONDUCTOR IDENTIFICATION
  - WIRE CONNECTION
  - ⊙ PILOT LIGHT
  - ETM ELAPSED TIME METER
  - ◀ OUTPUT ▶ PLC OUTPUT
  - ▶ INPUT ◀ PLC INPUT

- NOTES:**
- CONTACT CLOSES WHEN ADEQUATE CURRENT IS DRAWN TO PROVE EXHAUST FAN IS RUNNING.

- CONSTRUCTION NOTES:**
- REPLACE EXISTING STARTER WRAPPER WITH NEW WITH FEATURES SHOWN ON SCHEMATIC.



 Certificate of Authorization KGS Group No. 245 Date: 2010/12/21		B.M. ELEV. .	FIELD BOOK #:			 2010 HVAC REPLACEMENT AND ASSOCIATED WORKS <b>WEWPC</b> AREA S - SECONDARY CLARIFIERS 1 & 2 SP=S670 FVNR SCHEMATIC & WIRING DIAGRAM	SHEET 1 OF 1 CITY DRAWING NUMBER 1-0103S-E0027-001
		DESIGNED BY DDW	CHECKED BY REW		DESIGNED BY DDW		CHECKED BY REW
DRIVEN BY GCN		APPROVED BY REW		HORIZ. SCALE N.T.S. VERTICAL N.T.S.		RELEASED FOR CONSTRUCTION	
NO. REVISIONS		DATE BY		00 ISSUED FOR TENDER 2010-12-21 REW		TENDER No. SE213 FILENAME: 1-0103S-E0027-001-Rev 00.dwg PLOT DATE: 2010/12/16	