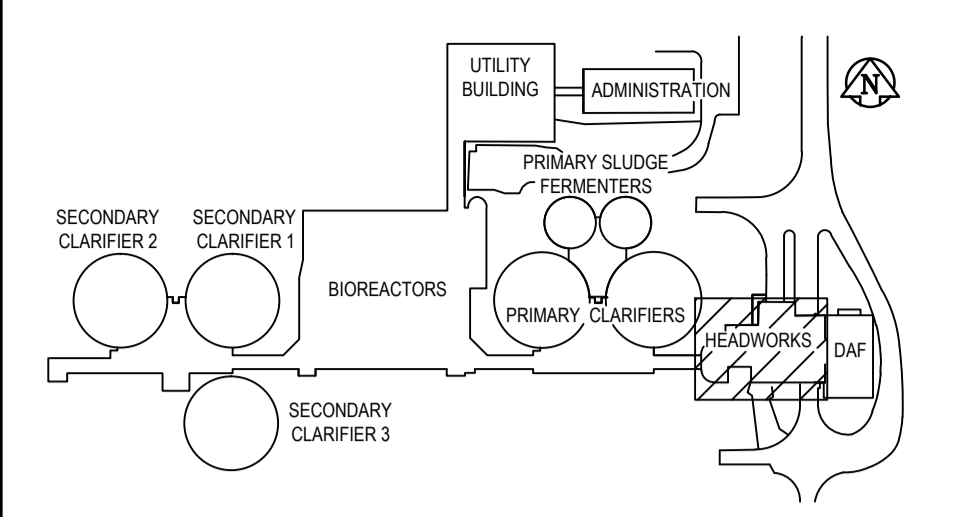
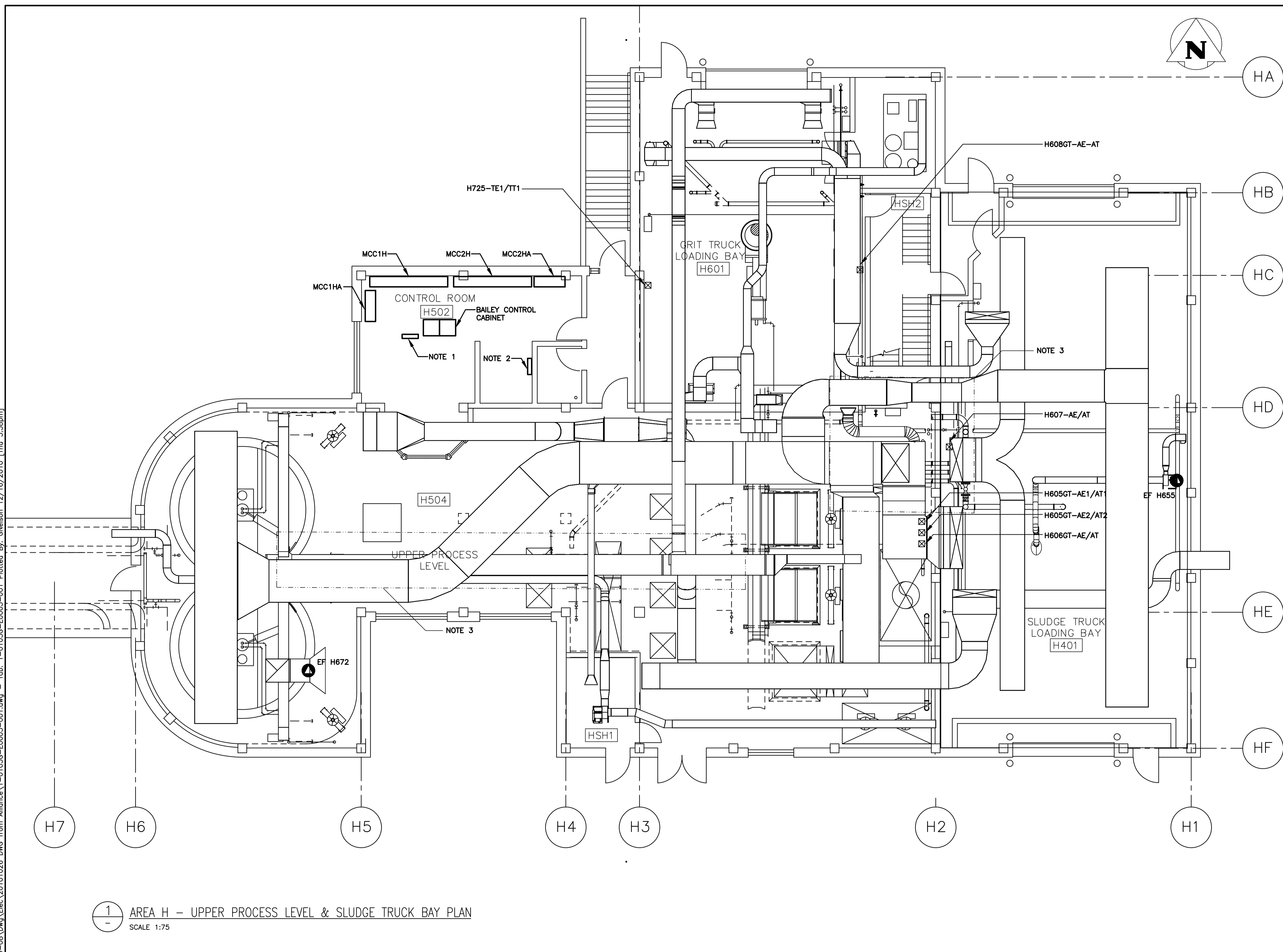


File Name: P:\Projects\2009\09-0754-06\DWG\Elec\20101026 DWG from Alliance\1-0103G-E0003-001.dwg - Tab: 1-0103G-E0003-001.dwg - Thu 3:36pm



KEY PLAN

- NOTES:**
1. GAS DETECTION PANEL.
 2. PANEL FEEDS S695.
 3. RELOCATE LIGHTING TO ACCOMMODATE DUCTING.
 4. NOT ALL EXISTING ELECTRICAL WIRING AND EQUIPMENT WHICH REQUIRES RELOCATION IS SHOWN IN DETAIL. THE CONTRACTOR SHALL REVIEW ALL TENDER DRAWINGS TO DETERMINE GLOBAL SCOPE OF RELOCATION.

1 AREA H - UPPER PROCESS LEVEL & SLUDGE TRUCK BAY PLAN
SCALE 1:75

APEGN
Certificate of Authorization
KGS Group
No. 245 Date: 2010/12/21

KGS GROUP
CONSULTING ENGINEERS

B.M. ELEV.	FIELD BOOK #:
POSTED TO LBIS	
DESIGNED BY	AP
CHECKED BY	DDW
DRAWN BY	GCN
APPROVED BY	REW
HOR. SCALE	-
RELEASED FOR CONSTRUCTION	
VERTICAL	-
ISSUED FOR TENDER	2010-12-21
REVISIONS	DATE BY
	2010 11 15

ALLIANCE
Engineering Services Inc.

ENGINEER'S SEAL
PROVINCE OF MANITOBA
R.E. WILLMS
Member 3833
REGISTERED PROFESSIONAL ENGINEER

THE CITY OF WINNIPEG
WATER AND WASTE DEPARTMENT

2010 HVAC REPLACEMENT AND ASSOCIATED WORKS
WEWPCC
AREA H - HEADWORKS
UPPER PROC. LEVEL AND SL. TRUCK BAY - PLAN - ELECTRICAL

SHEET 1 OF 1
CITY DRAWING NUMBER
1-0103G-E0003-001