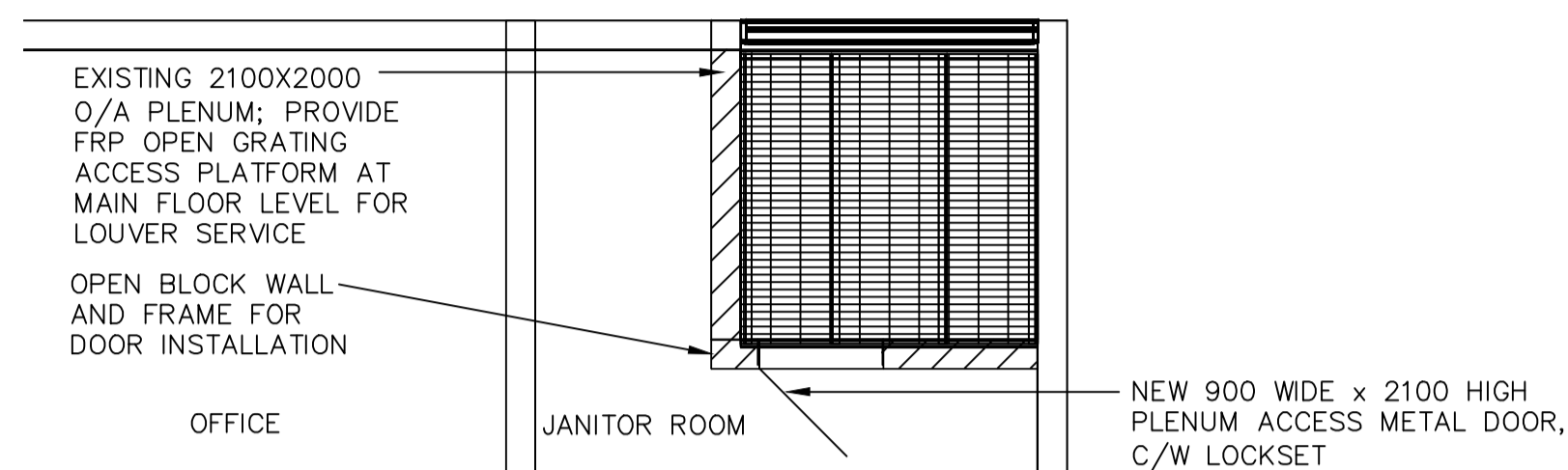
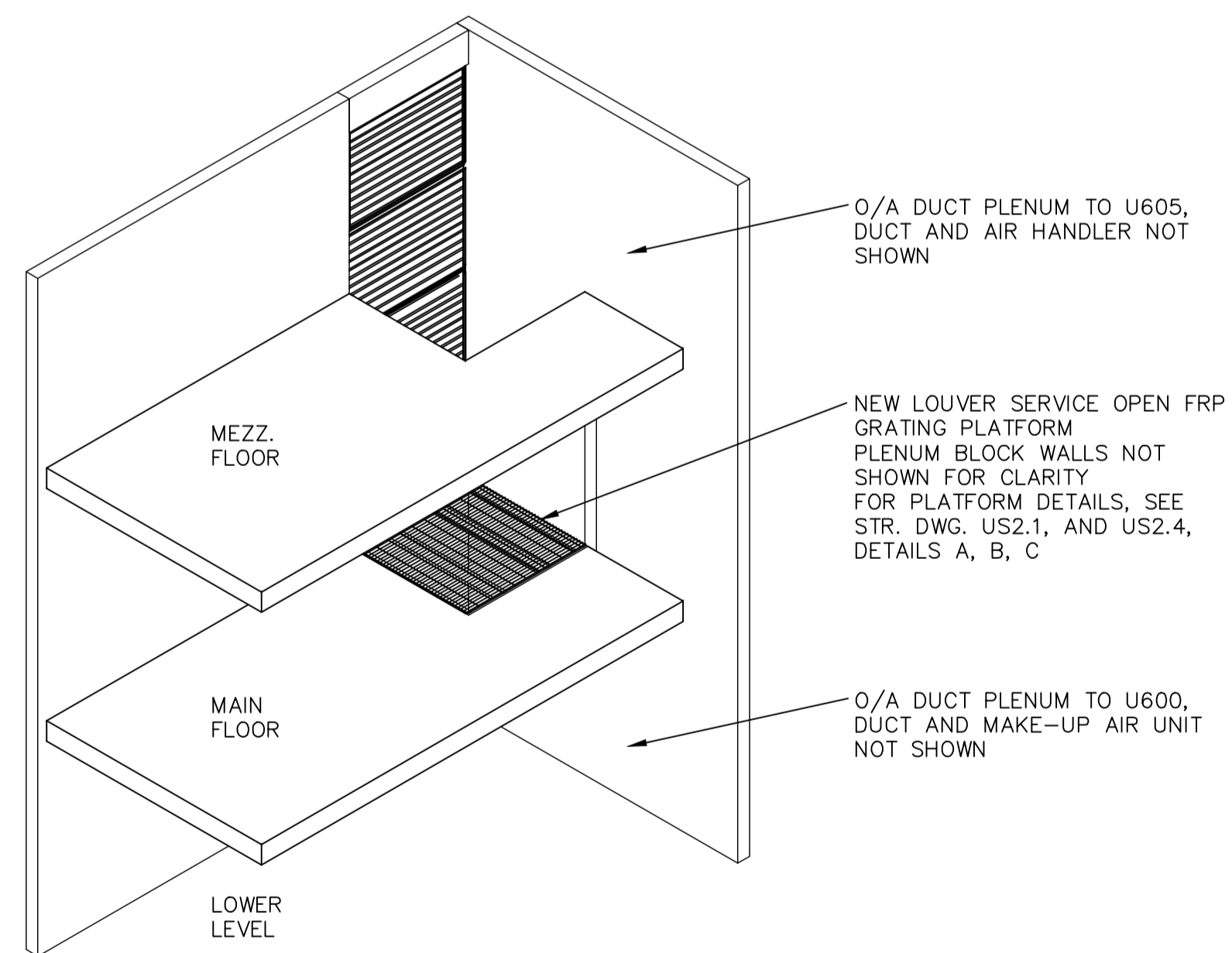


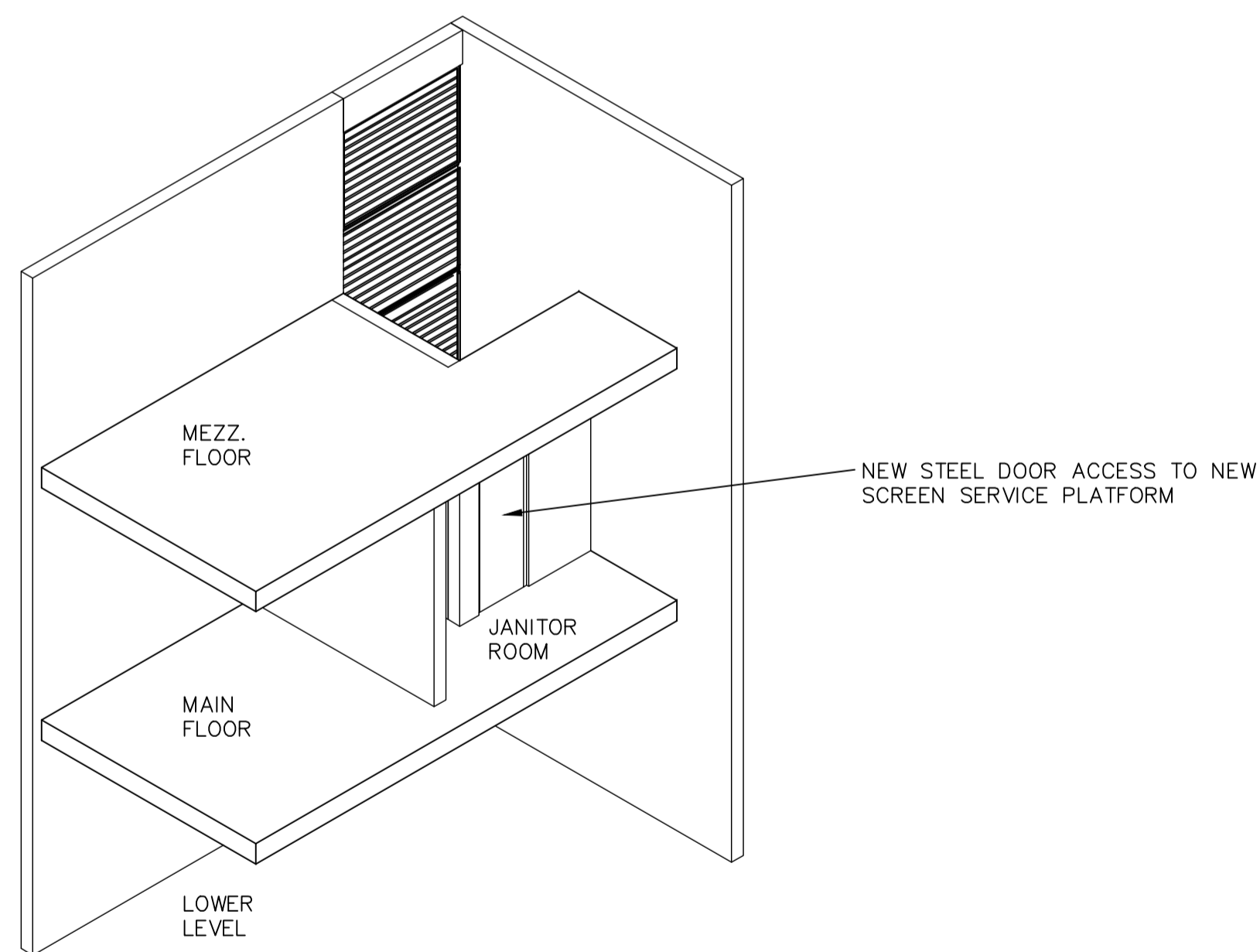
A AREA U - O/A PLENUM - ELEVATION
NTS



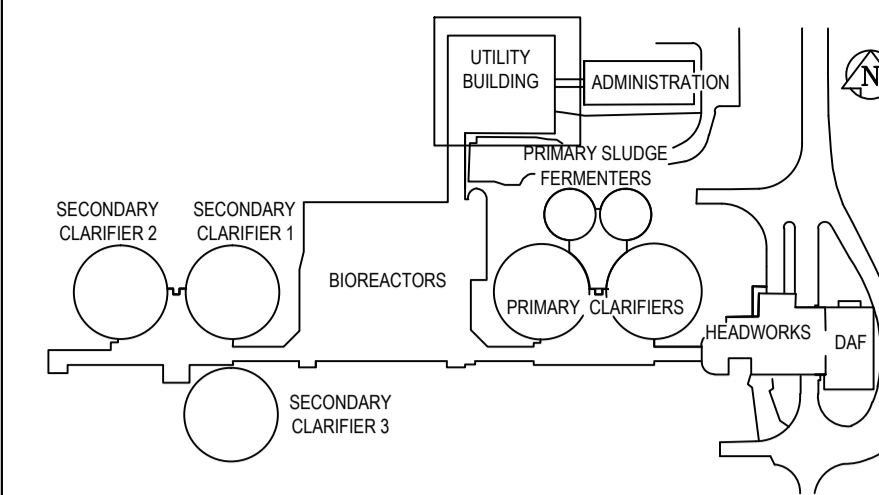
B AREA U - O/A PLENUM - PLAN
NTS



C AREA U - O/A PLENUM - ISOMETRIC
NTS



D AREA U - O/A PLENUM - ISOMETRIC
NTS



KEY PLAN

NOTES
FOR MORE DETAILS, SEE STRUCTURAL DRAWINGS US2.1 AND US2.4

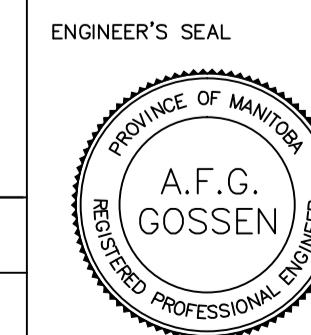
GENERAL NOTES

- PERFORM ALL WORK IN ACCORDANCE WITH ALL APPLICABLE CODES, STANDARDS AND PROVINCIAL MECHANICAL ENGINEERING & INSPECTIONS BRANCH REQUIREMENTS.
- COORDINATE WORKS WITH OTHER SUB-TRADES. REFER TO SPECIFIC DETAILS FOR CUTTING AND SEALING PENETRATIONS THROUGH OPENINGS & FIRE SEPARATIONS.
- REFER TO TECHNICAL SPECIFICATIONS FOR EQUIPMENT AND MATERIAL SPECIFICATIONS AND INSTALLATION REQUIREMENTS.
- INSULATE DUCTWORK WHERE INDICATED AND SPECIFIED.
- SUPPORT ALL DUCTWORK TO MEET CODE REQUIREMENTS & ESTABLISHED INDUSTRY TRADE PRACTICES, (SMACNA, ASHRAE).
- INVESTIGATE SITE PRIOR TO CONSTRUCTION TO CONFIRM ALL DIMENSIONS AND INSTALLATION REQ'S.
- PERFORM ALL CUTTING & PATCHING NECESSARY FOR ANY REQUIRED OPENINGS.
- PROVIDE TAB TO ENSURE AIR DISTRIBUTION TO VOLUMES INDICATED.

APEGM
Certificate of Authorization
Alliance Engineering Services Inc.
No.2906 Date: _____

B.M. ELEV.	236.160	FIELD BOOK #:	
POSTED TO LBIS			
DESIGNED BY	AFG/AS	CHECKED BY	
DRAWN BY	AS	APPROVED BY	
HOR. SCALE	NTS	RELEASED FOR CONSTRUCTION	
00	ISSUED FOR TENDER	2010-12-21	AFG
NO.	REVISIONS	DATE	BY
		2010-08-23	

ALLIANCE
Engineering Services Inc.



CONSULTANT DRAWING NO.
UM6.14

THE CITY OF WINNIPEG
WATER AND WASTE DEPARTMENT

2010 HVAC REPLACEMENT
AND ASSOCIATED WORKS
WEWPCC
UTILITY BUILDING
EXISTING O/A LOUVERED PLENUM MODIFICATIONS

SHEET 1 OF 1
CITY DRAWING NUMBER
1-0103V-M0054-001