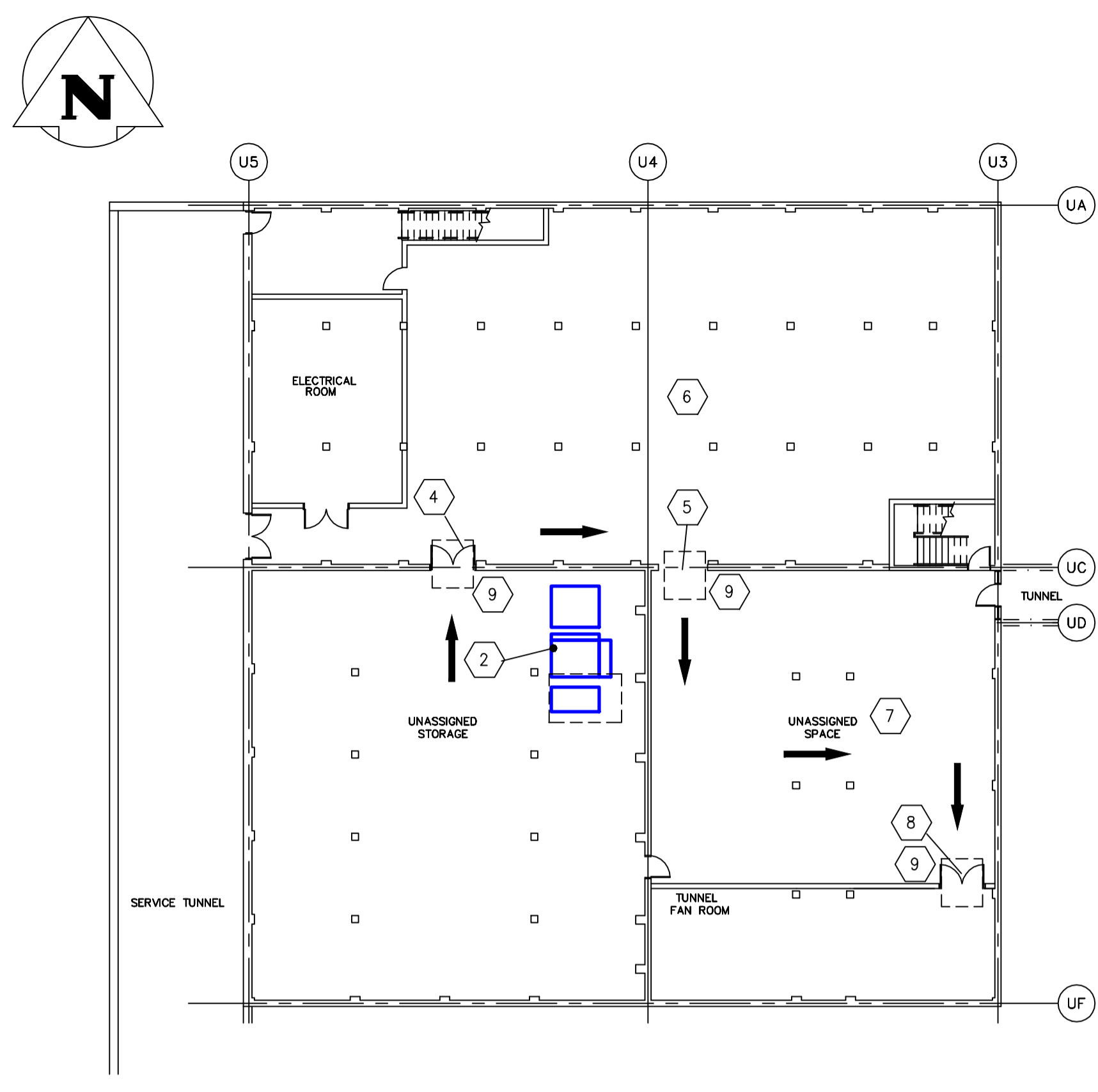
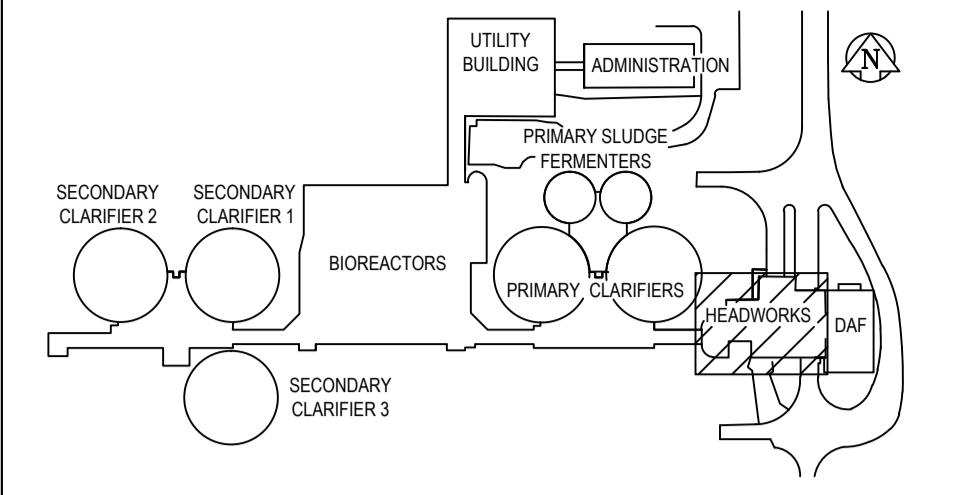


A AREA U - ACCESS PATH FOR MUA U600 - BLOWER ROOM
SCALE 1:200



B AREA U - ACCESS PATH FOR MUA U600 - LOWER LEVEL
SCALE 1:200



KEY PLAN

- KEY NOTES**
- 1 ACCESS OPENING FROM BLOWER ROOM TO LOWER FLOOR, 3000x2000 CLEAR; LOWER MUA U600 SECTIONS TO LOWER FLOOR UNASSIGNED STORAGE SPACE.
 - 2 NEW MUA U600 MAKE UP AIR UNIT, SPLIT IN 4 SECTIONS, TO CLEAR EXISTING PASSAGE ROUTING; OVERALL UNIT LENGTH, 5000mm MAX, WIDTH 1950mm, HEIGHT 1875mm; LARGEST SECTIONS DIMENSIONS, BURNER SECTION, 2425x1500 (6'0"x9'7") AND BLOWER SECTION, 1675x1950 (6'7"x7'8")
 - 3 UNASSIGNED SPACE STORAGE, USED FOR BLOWER SPARE PARTS STORAGE; CO-ORDINATE WITH PLANT PERSONNEL PATH TO BE USED FOR UNIT ACCESS THRU ROOM; RELOCATE STORED PARTS AS REQUIRED AND PLACE PARTS IN SAME LOCATION AFTER UNIT INSTALLATION.
 - 4 EXISTING DOUBLE METAL DOOR ACCESS TO FROM UNASSIGNED STORAGE SPACE ROOM IN UTILITY BUILDING LOWER FLOOR TO COMPRESSOR ROOM; INSIDE TO INSIDE DOOR DIMENSIONS, 1750mm WIDE x 2050 HEIGHT.
 - 5 EXISTING WALL OPENING TO UNASSIGNED SPACE, U121, INSIDE TO INSIDE DIMENSIONS, 1950mm WIDE x 2175 HIGH.
 - 6 COMPRESSOR ROOM
 - 7 ROOM U121 USED FOR PARTS STORAGE; CO-ORDINATE WITH PLANT PERSONNEL PATH TO BE USED FOR UNIT ACCESS TO FAN ROOM, RELOCATE STORED PARTS AS REQUIRED AND PLACE PARTS IN SAME LOCATION AFTER INSTALLATION.
 - 8 EXISTING DOUBLE METAL DOOR ACCESS TO FROM UNASSIGNED STORAGE SPACE ROOM U121, IN UTILITY BUILDING LOWER FLOOR TO TUNNEL FAN ROOM; INSIDE TO INSIDE DOOR DIMENSIONS, 1750mm WIDE x 2050 HEIGHT.
 - 9 LARGEST U600 SPLIT SECTION, (BURNER SECTION); THRU DOORS AND OPENING; SHOWN FOR ILLUSTRATION PURPOSE ONLY

- GENERAL NOTES**
1. PERFORM ALL WORK IN ACCORDANCE WITH ALL APPLICABLE CODES, STANDARDS AND PROVINCIAL MECHANICAL ENGINEERING & INSPECTIONS BRANCH REQUIREMENTS.
 2. COORDINATE WORKS WITH OTHER SUB-TRADES. REFER TO SPECIFIC DETAILS FOR CUTTING AND SEALING PENETRATIONS THROUGH OPENINGS & FIRE SEPARATIONS.
 3. REFER TO TECHNICAL SPECIFICATIONS FOR EQUIPMENT AND MATERIAL SPECIFICATIONS AND INSTALLATION CONSTRUCTION AND PHASING REQUIREMENTS.
 4. INSULATE DUCTWORK WHERE INDICATED AND SPECIFIED.
 5. SUPPORT ALL DUCTWORK TO MEET CODE REQUIREMENTS & ESTABLISHED INDUSTRY TRADE PRACTICES, (SMACNA, ASHRAE).
 6. INVESTIGATE SITE PRIOR TO CONSTRUCTION TO CONFIRM ALL DIMENSIONS AND INSTALLATION REQ'S.
 7. PERFORM ALL CUTTING & PATCHING NECESSARY FOR ANY REQUIRED OPENINGS.
 8. PROVIDE TAB TO ENSURE AIR DISTRIBUTION TO VOLUMES INDICATED.
 9. NOT ALL EQUIPMENT/PIPING, ETC. IS SHOWN.

APEGN
Certificate of Authorization
Alliance Engineering Services Inc.
No.2906 Date: _____

B.M. ELEV.	FIELD BOOK #:
POSTED TO LBIS	
00 ISSUED FOR TENDER	2010-12-21 AFG
NO. REVISIONS	DATE BY

ALLIANCE
Engineering Services Inc.

DESIGNED BY JC/AS	CHECKED BY AFG
DRAWN BY AS	APPROVED BY
HOR. SCALE 1:200	RELEASED FOR CONSTRUCTION
VERTICAL -	
DATE 2010-06-23	DATE

ENGINEER'S SEAL
A.F.G. GOSSEN
REGISTERED PROFESSIONAL ENGINEER
CONSULTANT DRAWING NO. UMG.13

THE CITY OF WINNIPEG
WATER AND WASTE DEPARTMENT

2010HVAC REPLACEMENT
AND ASSOCIATED WORKS
WEWPCC
AREA U - UTILITY BUILDING
U600-MUA BLOWER ROOM ACCESS PLAN

SHEET 1 OF 1
CITY DRAWING NUMBER
1-0103V-M0053-001