

REMOVE EXISTING GARAGE S/A DUCT

REMOVE EXISTING WYE AND REPLACE WITH NEW FITTING TO CONNECT TO U620-SF

EXISTING E/A DUCT FROM CHEM. STORAGE TO REMAIN IN SERVICE

EXISTING 900x350 O/A INSULATED DUCT TO BE REMOVED

EXISTING 2700x900 INSULATED O/A DUCT, TO BE REMOVED

U610 MUA TO BE REMOVED

350x350 E/A DUCT TO U655-EF, TO REMAIN IN SERVICE

2100x2000 O/A INTAKE PLENUM, OPEN TO 2000x6600 WALL LOUVRE TO REMAIN IN SERVICE

900x2200 DUCT UP TO O/A INTAKE PENTHOUSE TO REMAIN IN SERVICE

U650 UH TO REMAIN IN SERVICE

EXISTING R/A DUCT, SERVING MEZZ. STORAGE, MAIN FLOOR OFFICE AREA AND EL. ROOM TO REMAIN IN SERVICE

U640 AHU TO BE REMOVED

EXISTING 300x300 E/A DUCT TU U-615-EF TO REMAIN IN SERVICE

EXISTING INSULATED S/A DUCT, SERVING MEZZ. STORAGE, MAIN FLOOR OFFICE AREA AND EL. ROOM TO REMAIN IN SERVICE

EXISTING GARAGE E/A DUCTWORK TO REMAIN IN SERVICE

RELIEF AIR DUCT TO BE REMOVED

U690 SCU TO REMAIN IN SERVICE

U685 SCU TO REMAIN IN SERVICE

E/A DUCT TO U635-EF TO REMAIN IN SERVICE

EXISTING 1000x450 R/A DUCT FROM LOWER LEVEL SERVICE TO REMAIN IN SERVICE

EXISTING 150Ø FUME EXTRACTION ARM TO BE REMOVED

EXISTING 1000x600 S/A DUCT TO LOWER LEVEL SERVICE TO REMAIN IN SERVICE

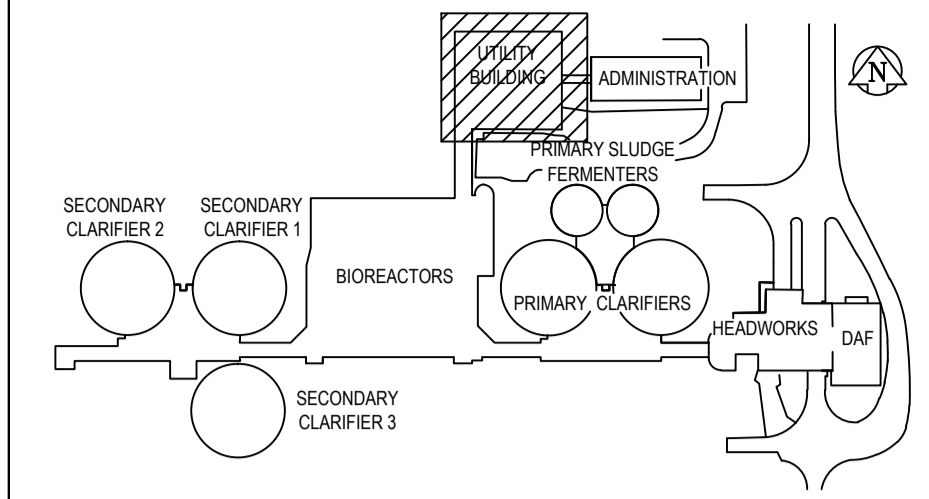
EXISTING 800x1000 R/A DUCT, SERVING BLOWER ROOM TO REMAIN IN SERVICE

EXISTING WALL GRILLE AND FIRE DAMPER SERVING BLOWER ROOM TO REMAIN IN SERVICE

EXISTING RELIEF AIR DUCT TO BE REMOVED

U605 AHU TO BE REMOVED

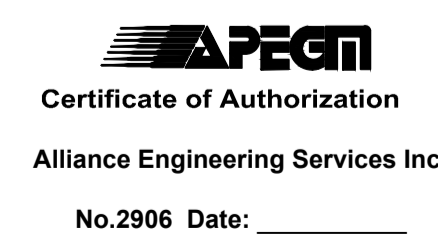
A AREA U - UTILITY MAIN & MEZZ. EXISTING CONDITIONS ISOMETRIC
- NTS



KEY PLAN

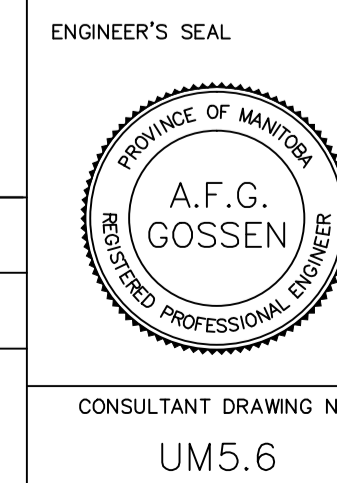
GENERAL NOTES

- PERFORM ALL WORK IN ACCORDANCE WITH ALL APPLICABLE CODES, STANDARDS AND PROVINCIAL MECHANICAL ENGINEERING & INSPECTIONS BRANCH REQUIREMENTS.
- COORDINATE WORKS WITH OTHER SUB-TRADES. REFER TO SPECIFIC DETAILS FOR CUTTING AND SEALING PENETRATIONS THROUGH OPENINGS & FIRE SEPARATIONS.
- REFER TO TECHNICAL SPECIFICATIONS FOR EQUIPMENT AND MATERIAL SPECIFICATIONS AND INSTALLATION CONSTRUCTION AND PHASING REQUIREMENTS.
- INSULATE DUCTWORK WHERE INDICATED AND SPECIFIED.
- SUPPORT ALL DUCTWORK TO MEET CODE REQUIREMENTS & ESTABLISHED INDUSTRY TRADE PRACTICES, (SMACNA, ASHRAE).
- INVESTIGATE SITE PRIOR TO CONSTRUCTION TO CONFIRM ALL DIMENSIONS AND INSTALLATION REQ'S.
- PERFORM ALL CUTTING & PATCHING NECESSARY FOR ANY REQUIRED OPENINGS.
- PROVIDE TAB TO ENSURE AIR DISTRIBUTION TO VOLUMES INDICATED.
- NOT ALL EQUIPMENT/PIPING, ETC. IS SHOWN.



B.M. ELEV.	FIELD BOOK #:
POSTED TO LBS	
DESIGNED BY AFG/JC	CHECKED BY AFG
DRAWN BY AS	APPROVED BY
HOR. SCALE NTS	RELEASED FOR CONSTRUCTION
VERTICAL NTS	
00 ISSUED FOR TENDER 2010-12-21 AFG	
NO. REVISIONS	DATE BY
	2010-08-23

ALLIANCE
Engineering Services Inc.



THE CITY OF WINNIPEG
WATER AND WASTE DEPARTMENT

2010 HVAC REPLACEMENT AND ASSOCIATED WORKS
WEWPCC
AREA U - UTILITY BUILDING
MAIN LEVEL & MEZZANINE - EXISTING CONDITIONS ISOMETRIC

SHEET 1 OF 1
CITY DRAWING NUMBER
1-0103V-M0039-001