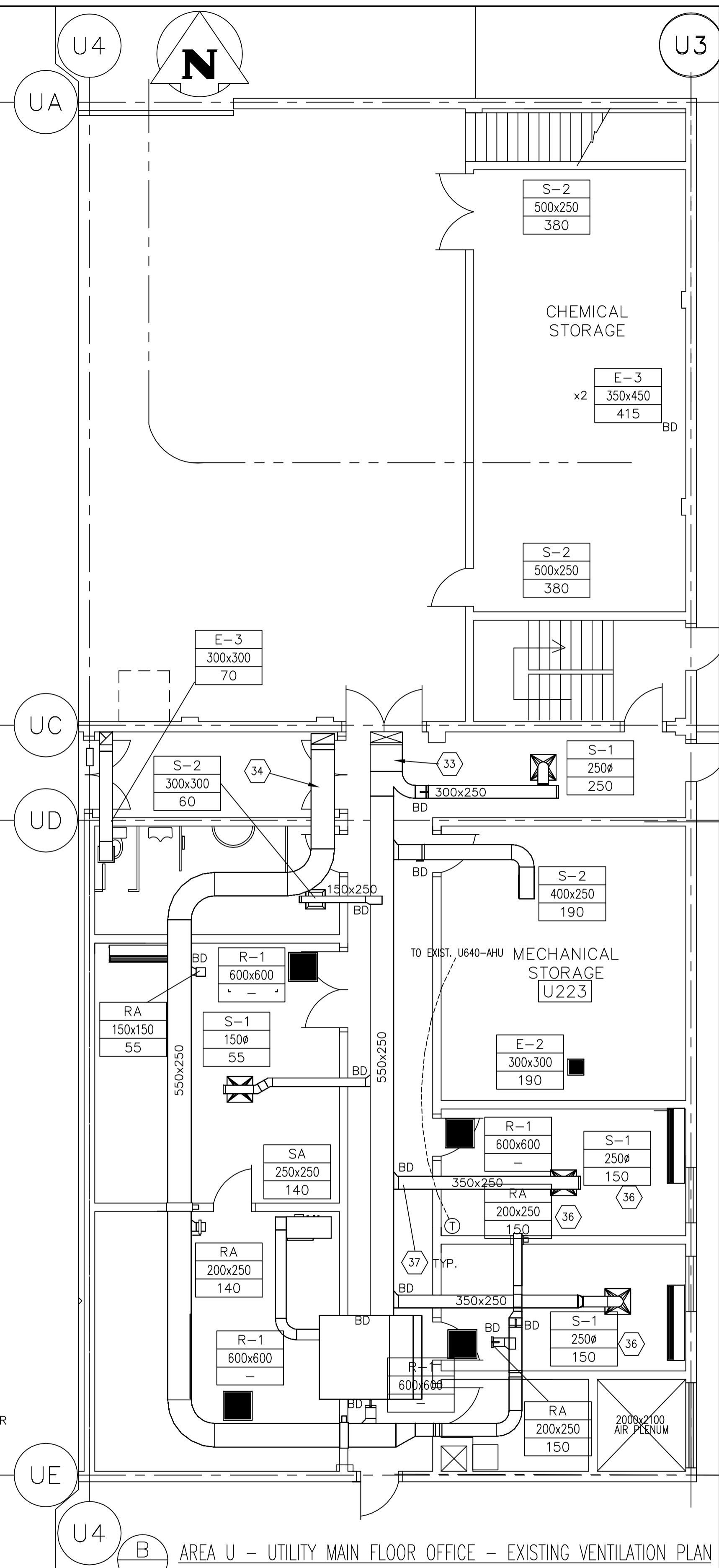
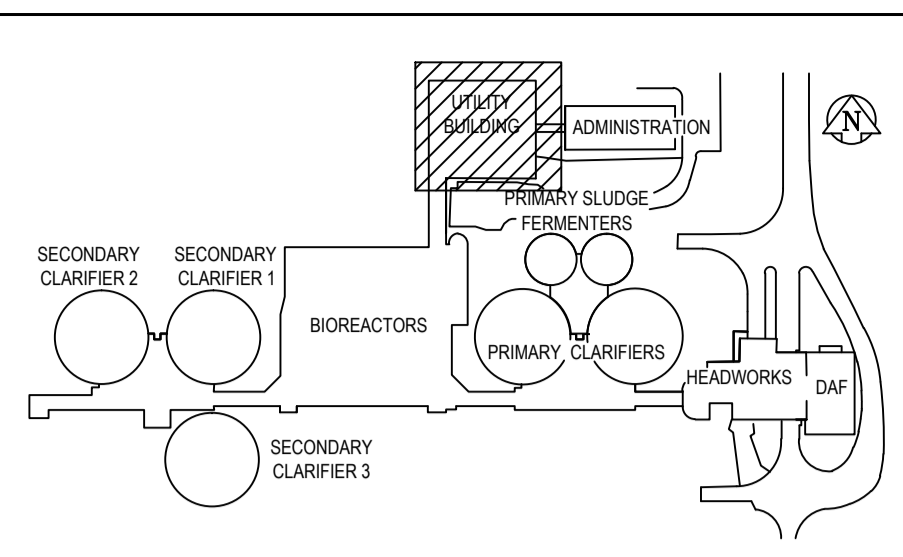


A AREA U - GARAGE & MEZZ. EXISTING VENTILATION PLAN
SCALE 1:75



B AREA U - UTILITY MAIN FLOOR OFFICE - EXISTING VENTILATION PLAN
SCALE 1:75



- KEY NOTES**
- EXISTING O/A DUCT FOR U640-AHU; REMOVE DUCT AND INFILL WALL OPENING WITH CONCRETE BLOCKS, TO MATCH EXISTING WALL; SEE STR. DWG. LS2.1 DETAIL 1.
 - REMOVE DUCT RISER TO EXISTING PENTHOUSE (PENTHOUSE TO BE REMOVED); INFILL ROOF WITH INSULATED (25mm) SANDWICH PANEL AND PATCH ROOF. SEE STR. DWG. DETAIL ?
 - REMOVE EXISTING U640-AHU RELIEF AIR DUCT, INCLUDING RISER TO PENTHOUSE (PENTHOUSE TO BE REMOVED); INFILL ROOF DECK AND PATCH ROOF. SEE STR. DWG. DETAIL ?
 - EXISTING 1000x600 THRU FLOOR, C/W FIRE DAMPER TO 1200x400 INSULATED S/A TO BASEMENT VENTILATION, TO REMAIN IN SERVICE; NO MODIFICATIONS TO S/A DUCT ABOVE FLOOR, UP TO TIP1.
 - EXISTING 1000x450 R/A THRU FLOOR, C/W FIRE DAMPER FROM BASEMENT VENTILATION, TO REMAIN IN SERVICE; NO MODIFICATIONS TO R/A DUCT ABOVE FLOOR, UP TO TIP2.
 - EXISTING R/A DUCT, 450x450, C/W FIRE DAMPER THRU WALL FROM BLOWER ROOM, TO MAIN FLOOR OFFICE AREA VENTILATION, TO REMAIN IN SERVICE.
 - EXISTING 500x500 S/A DUCT, C/W FIRE DAMPER, THRU WALL TO BLOWER ROOM, TO MAIN FLOOR OFFICE AREA VENTILATION, TO REMAIN IN SERVICE.
 - EXISTING 500x500 S/A & 450x450 R/A THRU WALL TO MEZZ. STORAGE ROOM, C/W FIRE DAMPERS; DUCT WITHIN STORAGE ROOM, INCLUDING S/A BRANCH AND S/A GRILLES TO REMAIN IN SERVICE.
 - S/A & R/A DUCTS THRU FLOOR, C/W FIRE DAMPERS, TO/FROM MAIN LEVEL OFFICE AREA VENTILATION, TO REMAIN IN SERVICE.
 - EXISTING 250x100 CORRIDOR S/A DUCT, TO REMAIN IN SERVICE.
 - EXISTING 200x200 JANITOR ROOM E/A DUCT, TO REMAIN IN SERVICE.
 - EXISTING U640-AHU TO BE REMOVED, REPLACED WITH NEW UNIT AT LOCATION SHOWN; SEE DWG. UM6.2 FOR NEW U640-MUA LOCATION.
 - EXISTING 250x250 S/A DUCT TO ELECTRICAL ROOM AND GENERATOR ROOM, TO REMAIN IN SERVICE.
 - EXISTING SHOP/GARAGE GENERAL VENTILATION E/A DUCT, EXHAUST GRILLES, TO REMAIN IN SERVICE; EXISTING EXHAUST FAN U675-EF SHALL BE REPLACED.
 - EXISTING CHEMICAL STORAGE VENTILATION E/A DUCT, EXHAUST GRILLES, TO REMAIN IN SERVICE; EXISTING EXHAUST FAN U670-EF SHALL BE REPLACED.
 - EXISTING U610-MUA, CHEMICAL STORAGE VENTILATION MAKE-UP AIR UNIT TO BE REMOVED AND REPLACED WITH NEW UNIT AT LOCATION AS SHOWN; SEE DWG. UM6.2 FOR NEW U610-MUA LOCATION.
 - EXISTING U610-MUA, 900x350 O/A INTAKE DUCT, FROM EXISTING LOUVERED PENTHOUSE ON ROOF; REMOVE DUCT UP TO UNIT INTAKE; PRESERVE PENTHOUSE, PART OF NEW U640-AHU O/A INTAKE PLENUM.
 - EXISTING U610-MUA, 900x350 O/A INTAKE DUCT, FROM EXISTING LOUVERED PENTHOUSE ON ROOF; REMOVE DUCT UP TO UNIT INTAKE; MAINTAIN LOUVERED PENTHOUSE, PART OF NEW U640-AHU O/A INTAKE PLENUM.
 - EXISTING U610-MUA, CHEMICAL STORAGE ROOM S/A DUCT BRANCH, SIZE AS SHOWN TO REMAIN IN SERVICE; DUCT MODIFICATIONS REQUIRED TO SUIT NEW VENTILATION SYSTEM REQUIREMENTS; SEE NEW CONDITIONS DWG. UM6.3.
 - 500x250 S/A DUCT TO CHEMICAL STORAGE ROOM THRU CHEM. STORAGE ROOF, C/W FIRE DAMPER, TO REMAIN IN SERVICE.
 - EXISTING S/A DUCT, PART OF SHOP/GARAGE VENTILATION, TO BE REMOVED UP TO REMOVED U610-MUA, INCLUDING S/A GRILLES, x3.
 - 300x300 E/A DUCT FROM WASHROOM TO EXISTING U615-EF EXHAUST FAN ON ROOF; DUCTWORK AND EXHAUST FAN TO REMAIN IN SERVICE.
 - EXISTING 350x350 E/A RISER, FROM MECHANICAL STORAGE EXHAUST, TO U655-EF EXHAUST FAN ON THE ROOF; EXHAUST FAN AND DUCTWORK TO REMAIN IN SERVICE.
 - EXISTING BLOWER ROOM VENTILATION AIR HANDLING UNIT, U605-AHU, TO BE REMOVED AND REPLACED WITH NEW AIR HANDLING UNIT, SAME LOCATION; EXISTING HOUSEKEEPING PAD TO BE RE-USED.
 - REMOVE U605 OUTLET TRANSITION SECTION AS REQUIRED FOR NEW UNIT INSTALLATION, TIP4; SEE NEW CONDITIONS DWG. UM6.3.
 - REMOVE U605 INLET DUCT SECTION TO EXTENT REQUIRED FOR NEW UNIT INSTALLATION, TIPS; SEE NEW CONDITIONS DWG. UM6.3.
 - REMOVE U605 RELIEF DUCT SECTION TO WALL LOUVER; INFILL WALL; SEE STR. DWG. US2.3 DETAIL C.
 - EXISTING 2100x2000 AIR PLENUM, OPEN ON EAST SIDE TO WALL LOUVER TO REMAIN IN SERVICE.
 - EXISTING 900x2200 O/A DUCTS UP BETWEEN ROOF JOISTS, TO EXISTING PENTHOUSE ON ROOF, O/A INTAKE ARRANGEMENT TO REMAIN IN SERVICE.
 - EXISTING 2000 ROOM RELIEF ROOF OPENING, TO REMAIN IN SERVICE.
 - EXISTING BLOWER ROOM R/A DUCT, C/W 3 SIDE WALL GRILLES, BD'S & FIRE DAMPERS, TO REMAIN IN SERVICE IN EXISTING CONFIGURATION.
 - EXISTING U605-AHU INTAKE PLENUM, TO REMAIN IN SERVICE IN EXISTING CONFIGURATION.
 - S/A DUCT TO MAIN FLOOR OFFICE AREA; VENTILATION SYSTEM TO REMAIN IN SERVICE IN EXISTING CONFIGURATION; ALL AIR TERMINALS SHALL BE BALANCED TO AIR FLOWS SHOWN, UPON NEW U640-AHU AIR HANDLING UNIT INSTALLATION, TYP.
 - R/A DUCT FROM MAIN FLOOR OFFICE AREA; VENTILATION SYSTEM TO REMAIN IN SERVICE IN EXISTING CONFIGURATION; ALL AIR TERMINALS SHALL BE BALANCED TO AIR FLOWS SHOWN, UPON NEW U640-AHU AIR HANDLING UNIT INSTALLATION, TYP.
 - GENERATOR ROOM VENTILATION SYSTEM, TO REMAIN IN SERVICE IN EXISTING CONFIGURATION NO WORK REQUIRED UNDER THIS CONTRACT.
 - NO DUCTWORK AND AIR TERMINAL CHANGES IN OFFICE AREA; BALANCE TO AIR FLOWS SHOWN, TYP.
 - BALANCING DAMPERS, TYP.
 - AIR FLOWS SHOWN, BASED ON EXISTING 'AS CONSTRUCTED' DRAWING WEP-321; FOR NEW REQUIRED AIR FLOWS, SEE DRAWING UM2.3.

GENERAL NOTES

- PERFORM ALL WORK IN ACCORDANCE WITH ALL APPLICABLE CODES, STANDARDS AND PROVINCIAL MECHANICAL ENGINEERING & INSPECTIONS BRANCH REQUIREMENTS.
- COORDINATE WORKS WITH OTHER SUB-TRADES. REFER TO SPECIFIC DETAILS FOR CUTTING AND SEALING PENETRATIONS THROUGH OPENINGS & FIRE SEPARATIONS.
- REFER TO TECHNICAL SPECIFICATIONS FOR EQUIPMENT AND MATERIAL SPECIFICATIONS AND INSTALLATION CONSTRUCTION AND PHASING REQUIREMENTS.
- INSULATE DUCTWORK WHERE INDICATED AND SPECIFIED.
- SUPPORT ALL DUCTWORK TO MEET CODE REQUIREMENTS & ESTABLISHED INDUSTRY TRADE PRACTICES, (SMACNA, ASHRAE).
- INVESTIGATE SITE PRIOR TO CONSTRUCTION TO CONFIRM ALL DIMENSIONS AND INSTALLATION REQ'S.
- PERFORM ALL CUTTING & PATCHING NECESSARY FOR ANY REQUIRED OPENINGS.
- PROVIDE TAB TO ENSURE AIR DISTRIBUTION TO VOLUMES INDICATED.
- NOT ALL EQUIPMENT/PIPING, ETC. IS SHOWN.

		B.M. ELEV.		FIELD BOOK #:	
Alliance Engineering Services Inc.		POSTED TO LBS			
No.2906 Date: _____					
DESIGNED BY: AFG/JC		CHECKED BY: AFG			
DRAWN BY: AS		APPROVED BY:			
HOR. SCALE: 1:75		RELEASED FOR CONSTRUCTION			
VERTICAL		DATE: 2010-08-23		DATE:	
00 ISSUED FOR TENDER		2010-12-21		AFG	
NO. REVISIONS		DATE		BY	

ENGINEER'S SEAL		
CONSULTANT DRAWING NO. UM5.3		
DESIGNED BY: AFG/JC		
DRAWN BY: AS		
HOR. SCALE: 1:75		DATE: 2010-08-23
VERTICAL		DATE:

THE CITY OF WINNIPEG
WATER AND WASTE DEPARTMENT

2010 HVAC REPLACEMENT AND ASSOCIATED WORKS		SHEET 1 OF 1
WEWPCC		CITY DRAWING NUMBER
AREA U - UTILITY BUILDING MAIN LEVEL & MEZZANINE VENTILATION - EXISTING CONDITIONS		1-0103V-M0036-001