

KEY PLAN

KEY NOTES

- 1 EXISTING TUNNEL VENTILATION MAKE-UP AIR UNIT, MUA U600; REMOVE UNIT FROM EXISTING LOCATION; REMOVAL PATH THRU EQUIPMENT HATCH IN BLOWER ROOM, SEE U600-MUA ACCESS PLAN, OPTION 1; UNIT 3700mm x 1830mm x 1600mm HIGH, 1700kg WEIGHT. UNIT TO BE BROKEN IN SECTION TO FACILITATE REMOVAL.
- 2 DISCONNECT N. GAS SERVICE TO EXISTING UNIT TO EXTENT REQUIRED FOR NEW UNIT INSTALLATION;
- 3 EXISTING R/A DUCT, 1000x450, FROM MAIN FLOOR, TIGHT TO SHOP SOUTH WALL, TO REMAIN IN SERVICE (PART OF U640-AHU VENTILATION SYSTEM); NO MODIFICATIONS TO R/A DUCTWORK, UNLESS NOTED OTHERWISE.
- 4 EXISTING 1050x600 THRU FLOOR TO 1200x400 INSULATED S/A DUCT FROM MAIN FLOOR, TIGHT TO SHOP SOUTH WALL, TO REMAIN IN SERVICE; NO MODIFICATIONS TO S/A DUCT IN BASEMENT (PART OF U640-AHU SYSTEM)
- 5 TRANSFER R/A WALL GRILLE FROM UNASSIGNED SPACE U121 INTO UNASSIGNED SPACE U123, TO BE REPLACED.
- 6 EXISTING R/A DUCT, 1000x300 THRU WALL INTO UNASSIGNED STORAGE TO REMAIN IN SERVICE
- 7 EXISTING O/A PLENUM DUCT, 2000x2100, INTERIOR LINED, OPEN AT TOP TO SIDE WALL LOUVER ABOVE GRADE, TO REMAIN IN SERVICE; SEE DWGS. UM6.1
- 8 EXISTING INSULATED S/A DUCT, 800x300 THRU WALL INTO UNASSIGNED STORAGE TO REMAIN IN SERVICE (PART OF MUA U640 SYSTEM)
- 9 EXISTING ELECTRICAL ROOM COOLING UNIT, U625-SCU TO REMAIN IN SERVICE
- 10 FIRE DAMPERS AT LOCATIONS SHOWN, TO REMAIN IN SERVICE
- 11 AIR FLOWS SHOWN, FROM EXISTING AVAILABLE REFERENCE DWGS; SEE UM2.1 FOR REQUIRED AIR FLOWS
- 12 EXISTING INSULATED S/A DUCT, TO TUNNELS SIZE AS SHOWN; TO REMAIN IN SERVICE
- 13 EXISTING 1500x1100 DUCT WALL SLEEVE, C/W FIRE DAMPER ACCESS DOOR, TO REMAIN; MAINTAIN INSULATED DUCT TRANSITION TO SUIT NEW U600 INSTALLATION
- 14 REMOVE EXISTING FUNNEL FLOOR DRAIN (TRIP HAZARD) AND EXISTING 12" PVC OUTSIDE AIR INTAKE PLENUM CONDENSATE DRAIN PIPE
- 15 EXISTING U600 SUPPLY AIR OPENING, 940x1092; CUT UNIT OUTLET DUCT TO TRANSITION, TO ALLOW FOR NEW UNIT INSTALLATION.
- 16 REMOVE SECTION OF OUTSIDE AIR DUCT, 1829x1575, TO ALLOW FOR NEW UNIT INSTALLATION.

A AREA U - UTILITY LOWER LEVEL VENTILATION - EXISTING CONDITIONS
SCALE 1:75

GENERAL NOTES

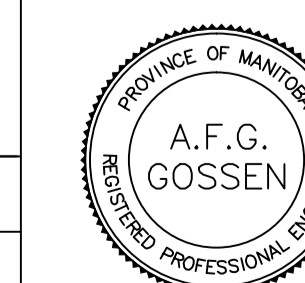
1. PERFORM ALL WORK IN ACCORDANCE WITH ALL APPLICABLE CODES, STANDARDS AND PROVINCIAL MECHANICAL ENGINEERING & INSPECTIONS BRANCH REQUIREMENTS.
2. COORDINATE WORKS WITH OTHER SUB-TRADES. REFER TO SPECIFIC DETAILS FOR CUTTING AND SEALING PENETRATIONS THROUGH OPENINGS & FIRE SEPARATIONS.
3. REFER TO TECHNICAL SPECIFICATIONS FOR EQUIPMENT AND MATERIAL SPECIFICATIONS AND INSTALLATION CONSTRUCTION AND PHASING REQUIREMENTS.
4. INSULATE DUCTWORK WHERE INDICATED AND SPECIFIED.
5. SUPPORT ALL DUCTWORK TO MEET CODE REQUIREMENTS & ESTABLISHED INDUSTRY TRADE PRACTICES, (SMACNA, ASHRAE).
6. INVESTIGATE SITE PRIOR TO CONSTRUCTION TO CONFIRM ALL DIMENSIONS AND INSTALLATION REQ'S.
7. PERFORM ALL CUTTING & PATCHING NECESSARY FOR ANY REQUIRED OPENINGS.
8. PROVIDE TAB TO ENSURE AIR DISTRIBUTION TO VOLUMES INDICATED.
9. NOT ALL EQUIPMENT/PIPING, ETC. IS SHOWN.



| | |
|-------------------------------------|---------------------------|
| B.M. ELEV. | FIELD BOOK #: |
| POSTED TO LBS | |
| DESIGNED BY AFG/JC | CHECKED BY AFG |
| DRAWN BY AS | APPROVED BY |
| HOR. SCALE 1:75 | RELEASED FOR CONSTRUCTION |
| VERTICAL | |
| 00 ISSUED FOR TENDER 2010-12-21 AFG | |
| NO. REVISIONS | DATE BY |
| | DATE 2010-08-23 |

ALLIANCE
Engineering Services Inc.

ENGINEER'S SEAL



CONSULTANT DRAWING NO. UM5.1



THE CITY OF WINNIPEG
WATER AND WASTE DEPARTMENT

2010 HVAC REPLACEMENT
AND ASSOCIATED WORKS
WEWPCC
AREA U - UTILITY BUILDING
LOWER LEVEL VENTILATION - EXISTING CONDITIONS

SHEET 1 OF 1
CITY DRAWING NUMBER
1-0103V-M0034-001