

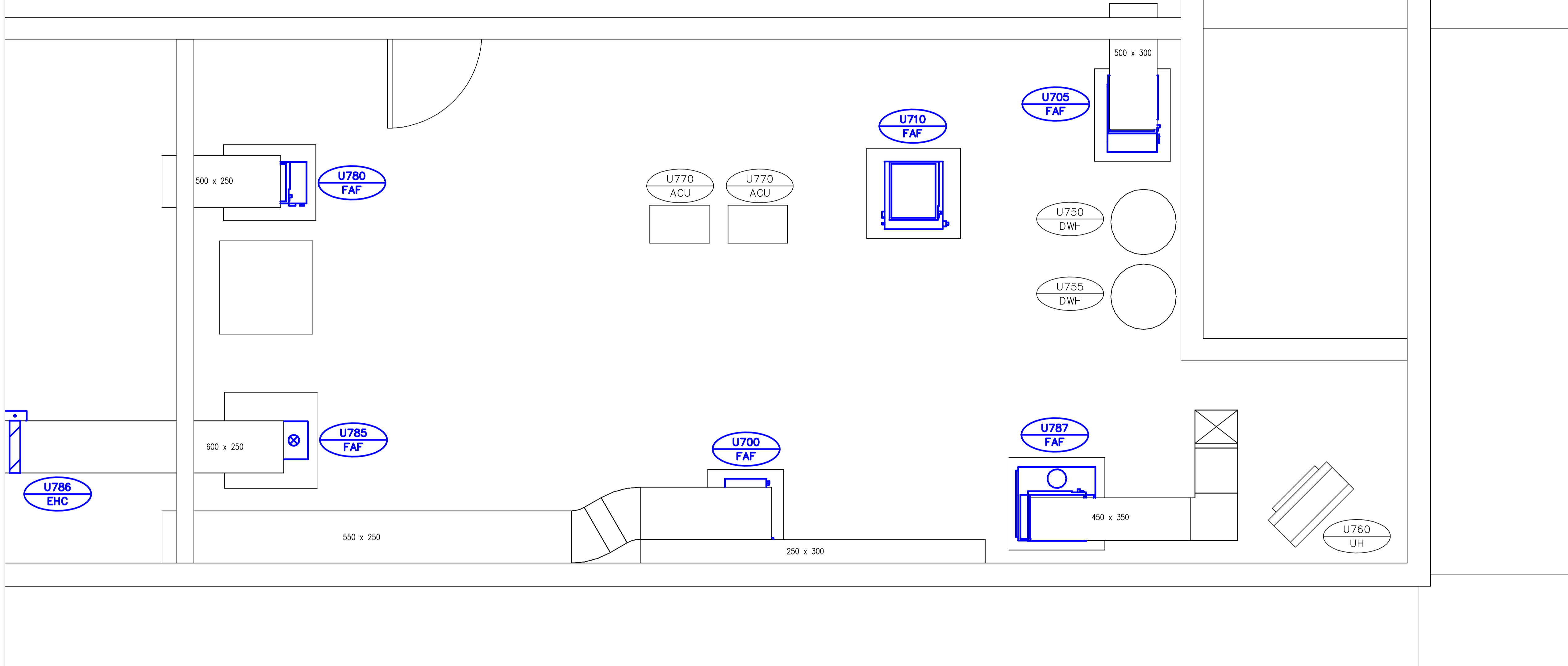
KEY PLAN

NOTES

1. NEW DUCTING TO BE INSTALLED AND CONNECTED TO THE EXISTING SYSTEM AS SHOWN. MORE INFORMATION CAN BE FOUND IN DETAILED SECTIONS FOUND IN THIS DRAWING PACKAGE.

KEY NOTES

1. PROVIDE BALANCING DAMPER FOR EACH SUPPLY BRANCH TO ALLOW FOR BALANCING AS SHOWN ON PROCESS FLOW DIAGRAMS.



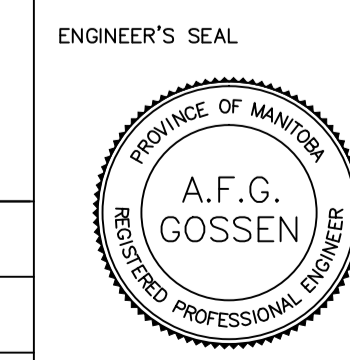
**A** MECHANICAL ROOM – SUPPLY AIR DUCTING LAYOUT  
SCALE 1:25

- GENERAL NOTES**
1. PERFORM ALL WORK IN ACCORDANCE WITH ALL APPLICABLE CODES, STANDARDS AND PROVINCIAL MECHANICAL ENGINEERING & INSPECTIONS BRANCH REQUIREMENTS.
  2. COORDINATE WORKS WITH OTHER SUB-TRADES. REFER TO SPECIFIC DETAILS FOR CUTTING AND SEALING PENETRATIONS THROUGH OPENINGS & FIRE SEPARATIONS.
  3. REFER TO TECHNICAL SPECIFICATIONS FOR EQUIPMENT AND MATERIAL SPECIFICATIONS AND INSTALLATION CONSTRUCTION AND PHASING REQUIREMENTS.
  4. INSULATE DUCTWORK WHERE INDICATED AND SPECIFIED.
  5. SUPPORT ALL DUCTWORK TO MEET CODE REQUIREMENTS & ESTABLISHED INDUSTRY TRADE PRACTICES, (SMACNA, ASHRAE).
  6. INVESTIGATE SITE PRIOR TO CONSTRUCTION TO CONFIRM ALL DIMENSIONS AND INSTALLATION REQ'S.
  7. PERFORM ALL CUTTING & PATCHING NECESSARY FOR ANY REQUIRED OPENINGS.
  8. PROVIDE TAB TO ENSURE AIR DISTRIBUTION TO VOLUMES INDICATED.
  9. NOT ALL EQUIPMENT/PIPING, ETC. IS SHOWN.

**APEGM**  
Certificate of Authorization  
Alliance Engineering Services Inc.  
No.2906 Date: \_\_\_\_\_

B.M. ELEV.	FIELD BOOK #:
POSTED TO LBIS	
DESIGNED BY	DD
CHECKED BY	
DRAWN BY	DD
APPROVED BY	
HOR. SCALE	1:50
VERTICAL	
00 ISSUED FOR TENDER	2010-12-21 AFG
NO. REVISIONS	DATE BY
	DATE 2010-11-05

**ALLIANCE**  
Engineering Services Inc.



**THE CITY OF WINNIPEG**  
WATER AND WASTE DEPARTMENT

2010 HVAC REPLACEMENT AND ASSOCIATED WORKS  
WEWPCC  
AREA U – ADMINISTRATION BUILDING  
MECHANICAL ROOM – S/A DUCTING LAYOUT [NEW]

SHEET 1 OF 1  
CITY DRAWING NUMBER  
1-0103V-M0024-001

CONSULTANT DRAWING NO.  
UM4.5