

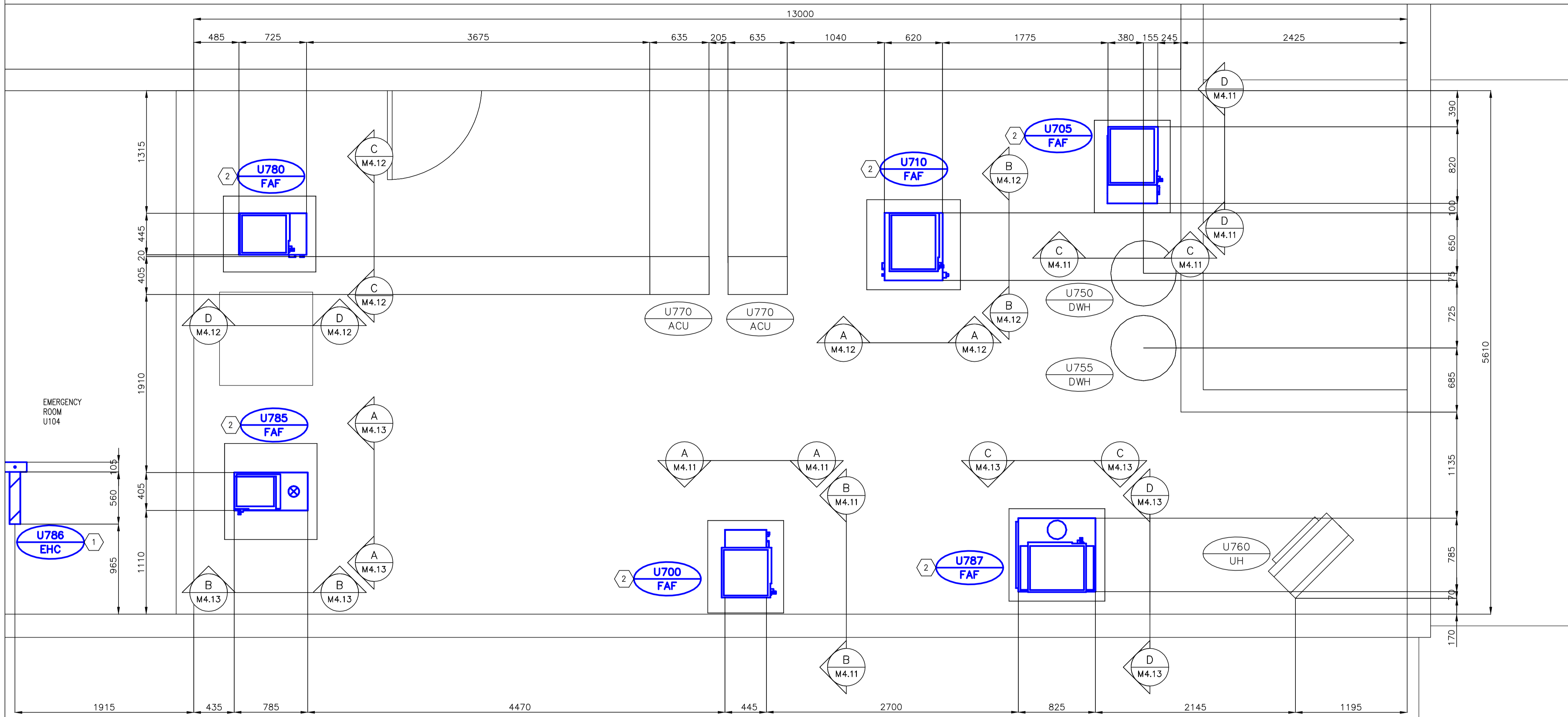
KEY PLAN

NOTES

- DRAWING DOES NOT SHOW PIPING, DUCTING AND ANCILLARIES; DETAILED SECTIONS SHOW ALL RELATED COMPONENTS.

KEY NOTES

- REFER TO DRAWING UM4.14 FOR MORE INFORMATION ON INSTALLATION OF THE ELECTRIC HEATING COIL
- NEW FORCED AIR FURNACE (FAF) INSTALLED AT LOCATION SHOWN, TYP.



(A) MECHANICAL ROOM – EQUIPMENT LAYOUT  
SCALE 1:25

GENERAL NOTES

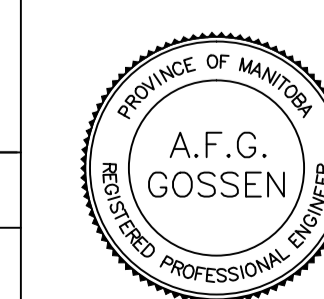
- PERFORM ALL WORK IN ACCORDANCE WITH ALL APPLICABLE CODES, STANDARDS AND PROVINCIAL MECHANICAL ENGINEERING & INSPECTIONS BRANCH REQUIREMENTS.
- COORDINATE WORKS WITH OTHER SUB-TRADES. REFER TO SPECIFIC DETAILS FOR CUTTING AND SEALING PENETRATIONS THROUGH OPENINGS & FIRE SEPARATIONS.
- REFER TO TECHNICAL SPECIFICATIONS FOR EQUIPMENT AND MATERIAL SPECIFICATIONS AND INSTALLATION CONSTRUCTION AND PHASING REQUIREMENTS.
- INSULATE DUCTWORK WHERE INDICATED AND SPECIFIED.
- SUPPORT ALL DUCTWORK TO MEET CODE REQUIREMENTS & ESTABLISHED INDUSTRY TRADE PRACTICES, (SMACNA, ASHRAE).
- INVESTIGATE SITE PRIOR TO CONSTRUCTION TO CONFIRM ALL DIMENSIONS AND INSTALLATION REQ'S.
- PERFORM ALL CUTTING & PATCHING NECESSARY FOR ANY REQUIRED OPENINGS.
- PROVIDE TAB TO ENSURE AIR DISTRIBUTION TO VOLUMES INDICATED.
- NOT ALL EQUIPMENT/PIPING, ETC. IS SHOWN.



B.M. ELEV.	FIELD BOOK #:
POSTED TO LBIS	
DESIGNED BY	DD
CHECKED BY	
DRAWN BY	DD
APPROVED BY	
HOR. SCALE	1:25
VERTICAL	
0 ISSUED FOR TENDER	2010-12-21 AFG
NO. REVISIONS	DATE BY
	DATE 2010-11-05

**ALLIANCE**  
Engineering Services Inc.

ENGINEER'S SEAL



CONSULTANT DRAWING NO.  
UM4.2



**THE CITY OF WINNIPEG**  
WATER AND WASTE DEPARTMENT

2010 HVAC REPLACEMENT  
AND ASSOCIATED WORKS  
WEWPCC  
AREA U – ADMINISTRATION BUILDING  
MECHANICAL ROOM – EQUIPMENT LAYOUT [NEW]

SHEET 1 OF 1  
CITY DRAWING NUMBER  
1-0103V-M0021-001