

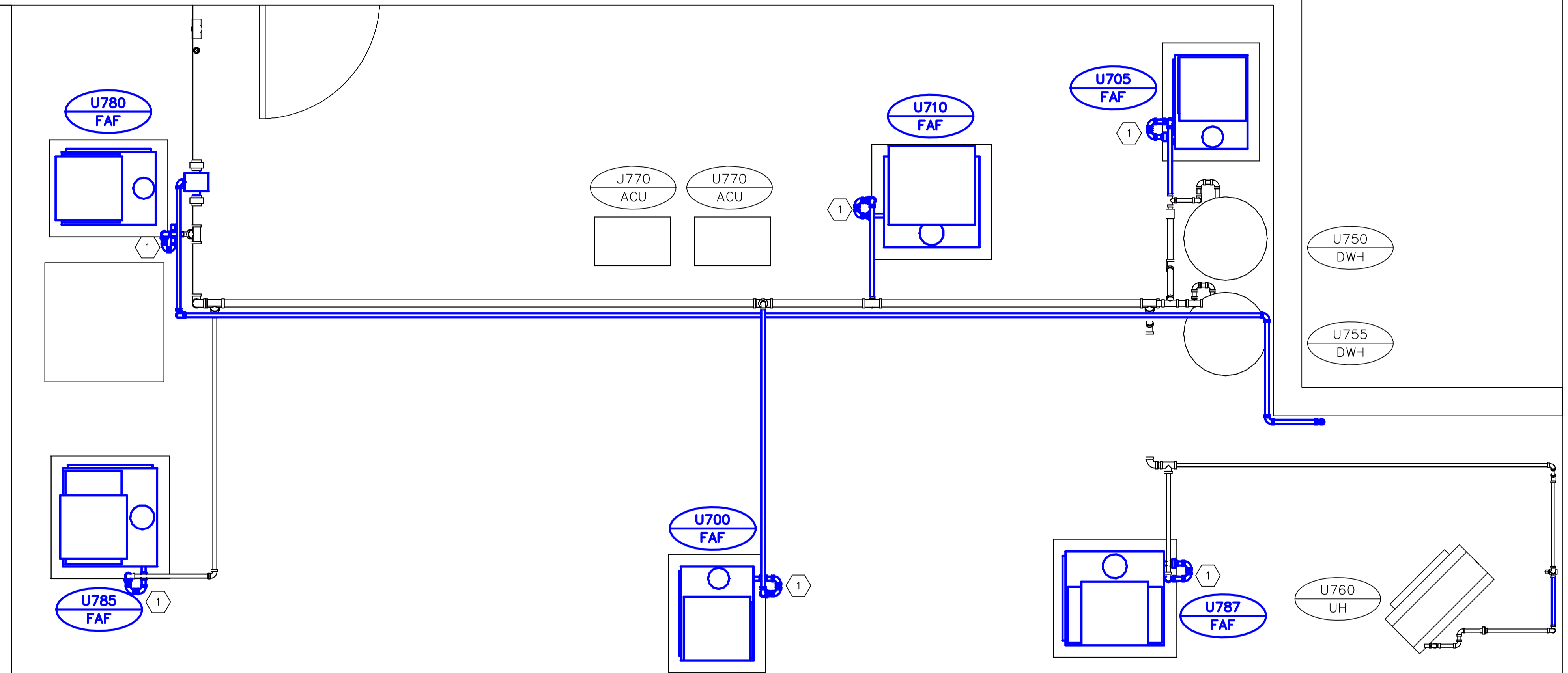
KEY PLAN

NOTES

- ITEMS TO BE DEMOLISHED ARE SHOWN IN BLUE. PERFORM CUTTING AND PATCHING AS REQUIRED.

KEY NOTES

- REMOVE EXISTING GAS PIPING, FITTINGS, ISOLATION VALVES AND GAS PRESSURE REGULATORS, AS REQUIRED.



A MECHANICAL ROOM – NATURAL GAS SUPPLY PIPING LAYOUT
SCALE 1:25

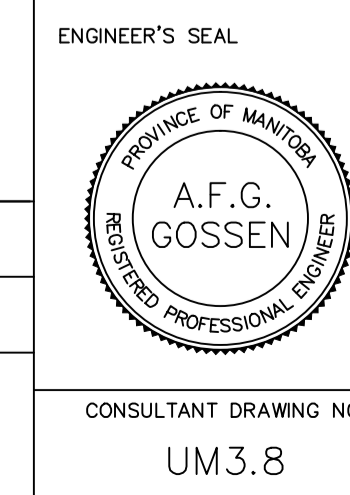
GENERAL NOTES

- PERFORM ALL WORK IN ACCORDANCE WITH ALL APPLICABLE CODES, STANDARDS AND PROVINCIAL MECHANICAL ENGINEERING & INSPECTIONS BRANCH REQUIREMENTS.
- COORDINATE WORKS WITH OTHER SUB-TRADES. REFER TO SPECIFIC DETAILS FOR CUTTING AND SEALING PENETRATIONS THROUGH OPENINGS & FIRE SEPARATIONS.
- REFER TO TECHNICAL SPECIFICATIONS FOR EQUIPMENT AND MATERIAL SPECIFICATIONS AND INSTALLATION CONSTRUCTION AND PHASING REQUIREMENTS.
- INSULATE DUCTWORK WHERE INDICATED AND SPECIFIED.
- SUPPORT ALL DUCTWORK TO MEET CODE REQUIREMENTS & ESTABLISHED INDUSTRY TRADE PRACTICES, (SMACNA, ASHRAE).
- INVESTIGATE SITE PRIOR TO CONSTRUCTION TO CONFIRM ALL DIMENSIONS AND INSTALLATION REQ'S.
- PERFORM ALL CUTTING & PATCHING NECESSARY FOR ANY REQUIRED OPENINGS.
- PROVIDE TAB TO ENSURE AIR DISTRIBUTION TO VOLUMES INDICATED.
- NOT ALL EQUIPMENT/PIPING, ETC. IS SHOWN.



B.M. ELEV.	FIELD BOOK #:
POSTED TO LBIS	
DESIGNED BY	DD
CHECKED BY	
DRAWN BY	DD
APPROVED BY	
HOR. SCALE	1:25
VERTICAL	
RELEASSED FOR CONSTRUCTION	
DATE	2010-11-05
DATE	

ALLIANCE
Engineering Services Inc.



THE CITY OF WINNIPEG
WATER AND WASTE DEPARTMENT

2010 HVAC REPLACEMENT AND ASSOCIATED WORKS
WEWPCC
AREA U – ADMINISTRATION BUILDING
MECHANICAL ROOM – NATURAL GAS SUPPLY PIPING LAYOUT [EXIST]

SHEET 1 OF 1
CITY DRAWING NUMBER
1-0103V-M0015-001

00	ISSUED FOR TENDER	2010-12-21	AFG
NO.	REVISIONS	DATE	BY