

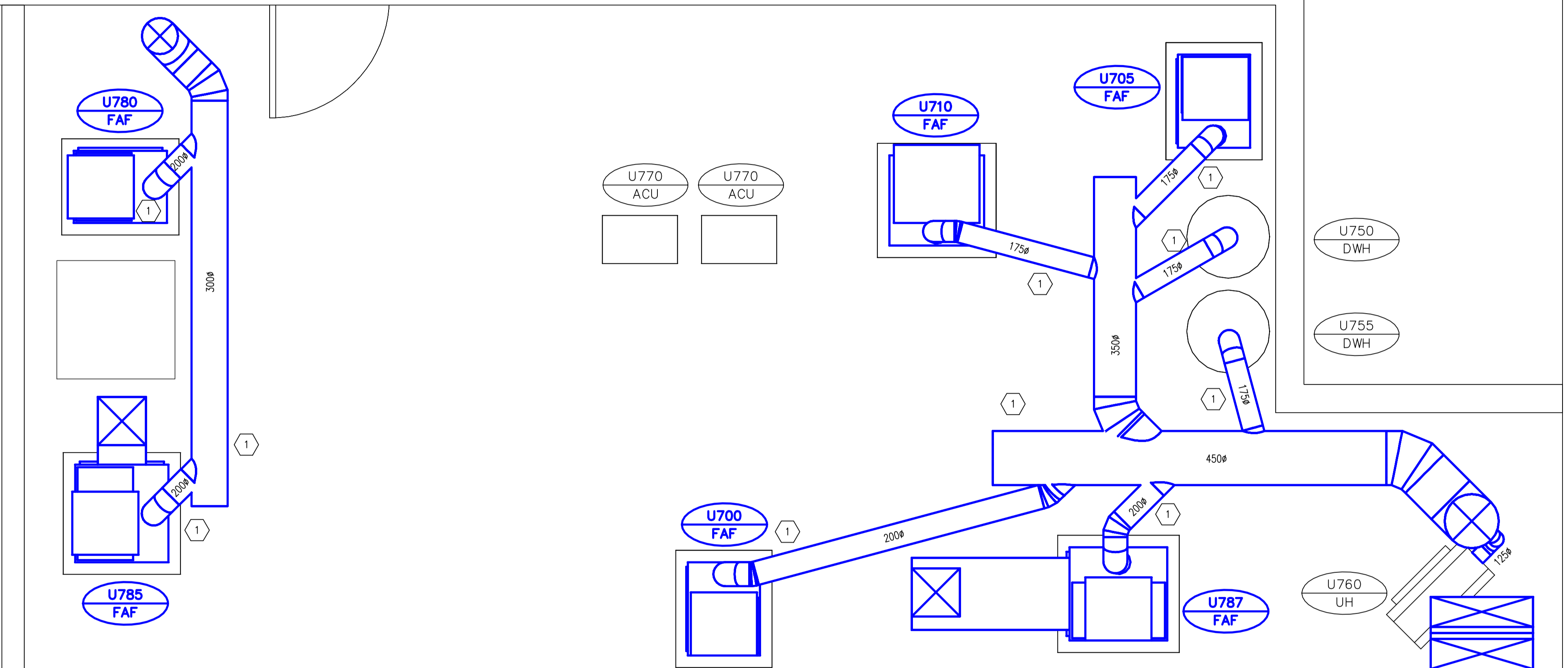
KEY PLAN

NOTES

- ITEMS TO BE DEMOLISHED ARE SHOWN IN BLUE. PERFORM CUTTING AND PATCHING AS REQUIRED.

KEY NOTES

- REMOVE FLUE VENTS, TYP.



A MECHANICAL ROOM – EQUIPMENT VENTILATION LAYOUT
SCALE 1:25

- GENERAL NOTES**
- PERFORM ALL WORK IN ACCORDANCE WITH ALL APPLICABLE CODES, STANDARDS AND PROVINCIAL MECHANICAL ENGINEERING & INSPECTIONS BRANCH REQUIREMENTS.
 - COORDINATE WORKS WITH OTHER SUB-TRADES. REFER TO SPECIFIC DETAILS FOR CUTTING AND SEALING PENETRATIONS THROUGH OPENINGS & FIRE SEPARATIONS.
 - REFER TO TECHNICAL SPECIFICATIONS FOR EQUIPMENT AND MATERIAL SPECIFICATIONS AND INSTALLATION CONSTRUCTION AND PHASING REQUIREMENTS.
 - INSULATE DUCTWORK WHERE INDICATED AND SPECIFIED.
 - SUPPORT ALL DUCTWORK TO MEET CODE REQUIREMENTS & ESTABLISHED INDUSTRY TRADE PRACTICES, (SMACNA, ASHRAE).
 - INVESTIGATE SITE PRIOR TO CONSTRUCTION TO CONFIRM ALL DIMENSIONS AND INSTALLATION REQ'S.
 - PERFORM ALL CUTTING & PATCHING NECESSARY FOR ANY REQUIRED OPENINGS.
 - PROVIDE TAB TO ENSURE AIR DISTRIBUTION TO VOLUMES INDICATED.
 - NOT ALL EQUIPMENT/PIPING, ETC. IS SHOWN.

APEGM
Certificate of Authorization
Alliance Engineering Services Inc.
No.2906 Date: _____

B.M. ELEV.	FIELD BOOK #:
POSTED TO LBIS	
00 ISSUED FOR TENDER	2010-12-21 AFG
NO. REVISIONS	DATE BY

ALLIANCE
Engineering Services Inc.

DESIGNED BY DD	CHECKED BY
DRAWN BY DD	APPROVED BY
HOR. SCALE 1:25	RELEASED FOR CONSTRUCTION
VERTICAL	
DATE 2010-11-05	DATE

ENGINEER'S SEAL
PROVINCE OF MANITOBA
A.F.G. GOSSEN
REGISTERED PROFESSIONAL ENGINEER
CONSULTANT DRAWING NO. UM3.7

THE CITY OF WINNIPEG
WATER AND WASTE DEPARTMENT

2010 HVAC REPLACEMENT AND ASSOCIATED WORKS
WEWPCC
AREA U – ADMINISTRATION BUILDING
MECHANICAL ROOM – EQUIPMENT VENTILATION LAYOUT [EXIST]

SHEET 1 OF 1
CITY DRAWING NUMBER
1-0103V-M0014-001