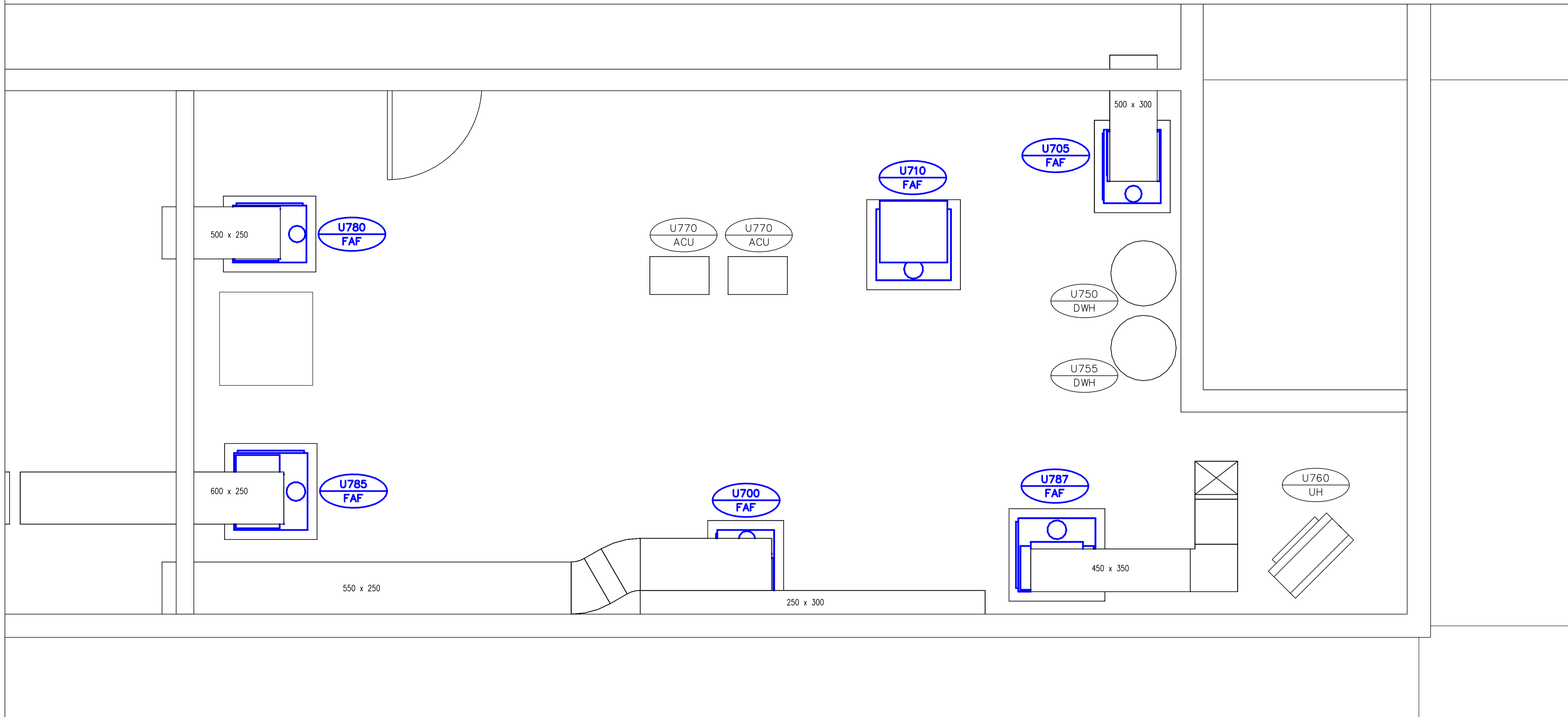


KEY PLAN

NOTES

- ITEMS TO BE DEMOLISHED ARE SHOWN IN BLUE. PERFORM CUTTING AND PATCHING AS REQUIRED.



A MECHANICAL ROOM – SUPPLY AIR DUCTING LAYOUT
SCALE 1:25

GENERAL NOTES

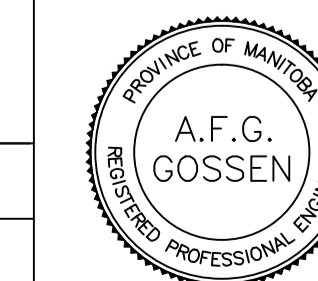
- PERFORM ALL WORK IN ACCORDANCE WITH ALL APPLICABLE CODES, STANDARDS AND PROVINCIAL MECHANICAL ENGINEERING & INSPECTIONS BRANCH REQUIREMENTS.
- COORDINATE WORKS WITH OTHER SUB-TRADES. REFER TO SPECIFIC DETAILS FOR CUTTING AND SEALING PENETRATIONS THROUGH OPENINGS & FIRE SEPARATIONS.
- REFER TO TECHNICAL SPECIFICATIONS FOR EQUIPMENT AND MATERIAL SPECIFICATIONS AND INSTALLATION CONSTRUCTION AND PHASING REQUIREMENTS.
- INSULATE DUCTWORK WHERE INDICATED AND SPECIFIED.
- SUPPORT ALL DUCTWORK TO MEET CODE REQUIREMENTS & ESTABLISHED INDUSTRY TRADE PRACTICES, (SMACNA, ASHRAE).
- INVESTIGATE SITE PRIOR TO CONSTRUCTION TO CONFIRM ALL DIMENSIONS AND INSTALLATION REQ'S.
- PERFORM ALL CUTTING & PATCHING NECESSARY FOR ANY REQUIRED OPENINGS.
- PROVIDE TAB TO ENSURE AIR DISTRIBUTION TO VOLUMES INDICATED.
- NOT ALL EQUIPMENT/PIPING, ETC. IS SHOWN.

APEGM
Certificate of Authorization
Alliance Engineering Services Inc.
No.2906 Date: _____

B.M. ELEV.	FIELD BOOK #:
POSTED TO LBIS	
DESIGNED BY	DD
CHECKED BY	
DRAWN BY	DD
APPROVED BY	
HOR. SCALE	1:25
VERTICAL	
00 ISSUED FOR TENDER	2010-12-21 AFG
NO. REVISIONS	DATE BY
	2010-11-05

ALLIANCE
Engineering Services Inc.

ENGINEER'S SEAL



CONSULTANT DRAWING NO.
UM3.6

THE CITY OF WINNIPEG
WATER AND WASTE DEPARTMENT

2010 HVAC REPLACEMENT
AND ASSOCIATED WORKS
WEWPCC
AREA U – ADMINISTRATION BUILDING
MECHANICAL ROOM – S/A DUCTING LAYOUT [EXIST]

SHEET 1 OF 1
CITY DRAWING NUMBER
1-0103V-M0013-001