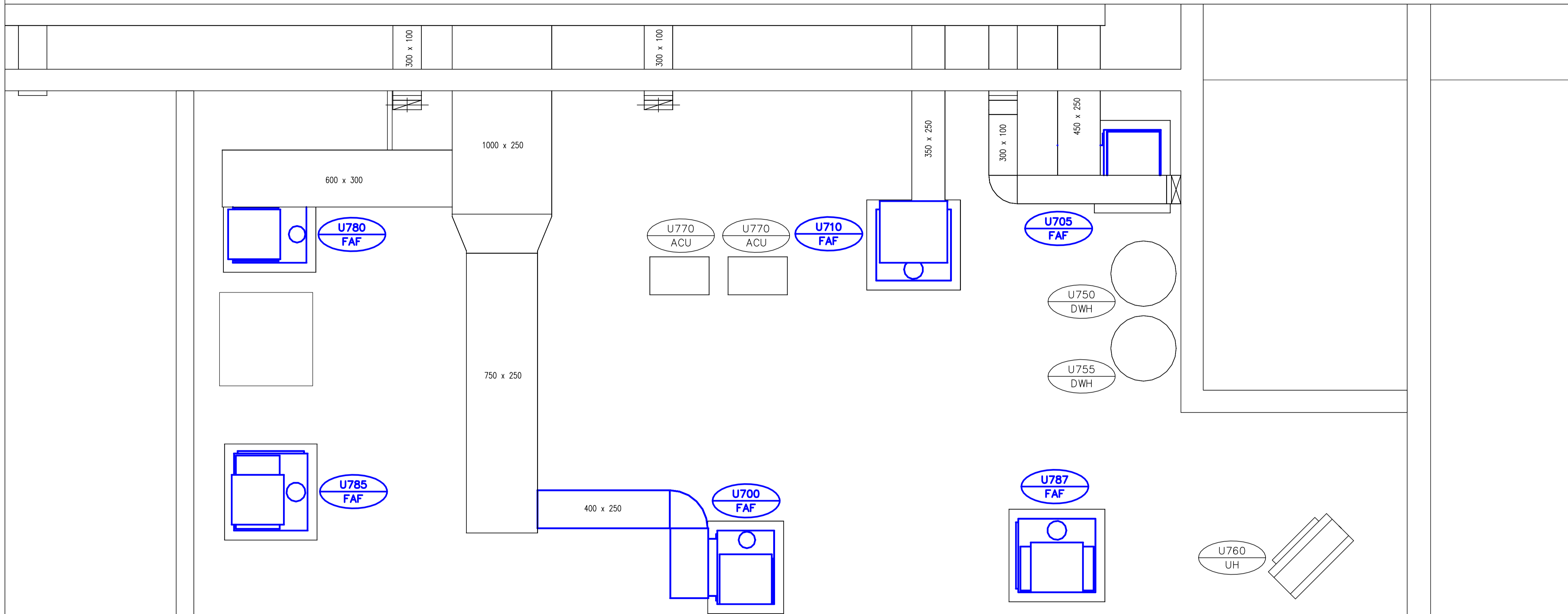


KEY PLAN

NOTES

- ITEMS TO BE DEMOLISHED ARE SHOWN IN BLUE. PERFORM CUTTING AND PATCHING AS REQUIRED.



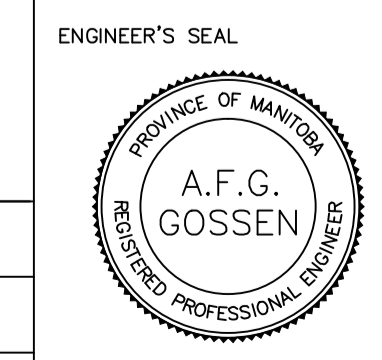
**A** MECHANICAL ROOM – RETURN AIR DUCTING LAYOUT  
SCALE 1:25

- GENERAL NOTES**
- PERFORM ALL WORK IN ACCORDANCE WITH ALL APPLICABLE CODES, STANDARDS AND PROVINCIAL MECHANICAL ENGINEERING & INSPECTIONS BRANCH REQUIREMENTS.
  - COORDINATE WORKS WITH OTHER SUB-TRADES. REFER TO SPECIFIC DETAILS FOR CUTTING AND SEALING PENETRATIONS THROUGH OPENINGS & FIRE SEPARATIONS.
  - REFER TO TECHNICAL SPECIFICATIONS FOR EQUIPMENT AND MATERIAL SPECIFICATIONS AND INSTALLATION CONSTRUCTION AND PHASING REQUIREMENTS.
  - INSULATE DUCTWORK WHERE INDICATED AND SPECIFIED.
  - SUPPORT ALL DUCTWORK TO MEET CODE REQUIREMENTS & ESTABLISHED INDUSTRY TRADE PRACTICES, (SMACNA, ASHRAE).
  - INVESTIGATE SITE PRIOR TO CONSTRUCTION TO CONFIRM ALL DIMENSIONS AND INSTALLATION REQ'S.
  - PERFORM ALL CUTTING & PATCHING NECESSARY FOR ANY REQUIRED OPENINGS.
  - PROVIDE TAB TO ENSURE AIR DISTRIBUTION TO VOLUMES INDICATED.
  - NOT ALL EQUIPMENT/PIPING, ETC. IS SHOWN.



B.M. ELEV.	FIELD BOOK #:
POSTED TO LBIS	
DESIGNED BY	DD
CHECKED BY	
DRAWN BY	DD
APPROVED BY	
HOR. SCALE	1:25
VERTICAL	
00 ISSUED FOR TENDER	2010-12-21 AFG
NO. REVISIONS	DATE BY
	2010-11-05

**ALLIANCE**  
Engineering Services Inc.



**THE CITY OF WINNIPEG**  
WATER AND WASTE DEPARTMENT

2010 HVAC REPLACEMENT AND ASSOCIATED WORKS  
WEWPCC  
AREA U – ADMINISTRATION BUILDING  
MECHANICAL ROOM – R/A DUCTING LAYOUT [EXIST]

SHEET 1 OF 1  
CITY DRAWING NUMBER  
1-0103V-M0012-001

CONSULTANT DRAWING NO.  
UM3.5

RELEASED FOR CONSTRUCTION	
DATE	2010-11-05