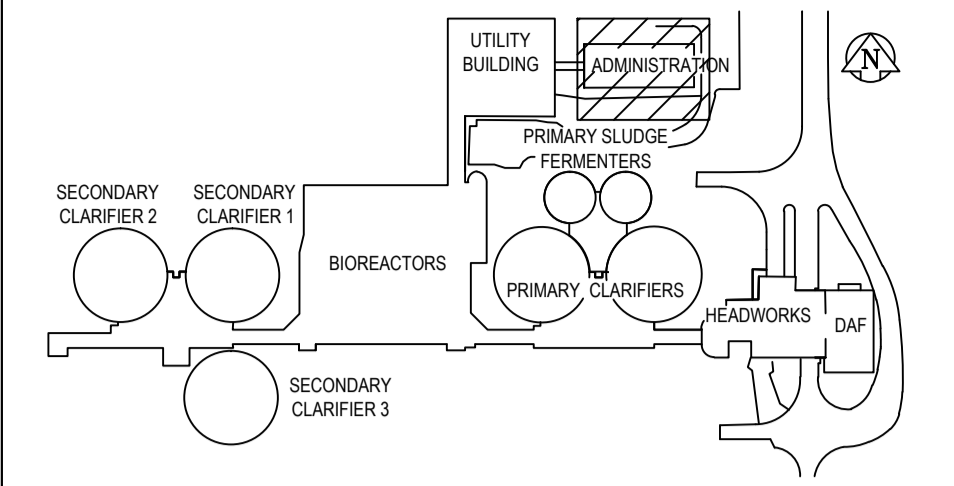
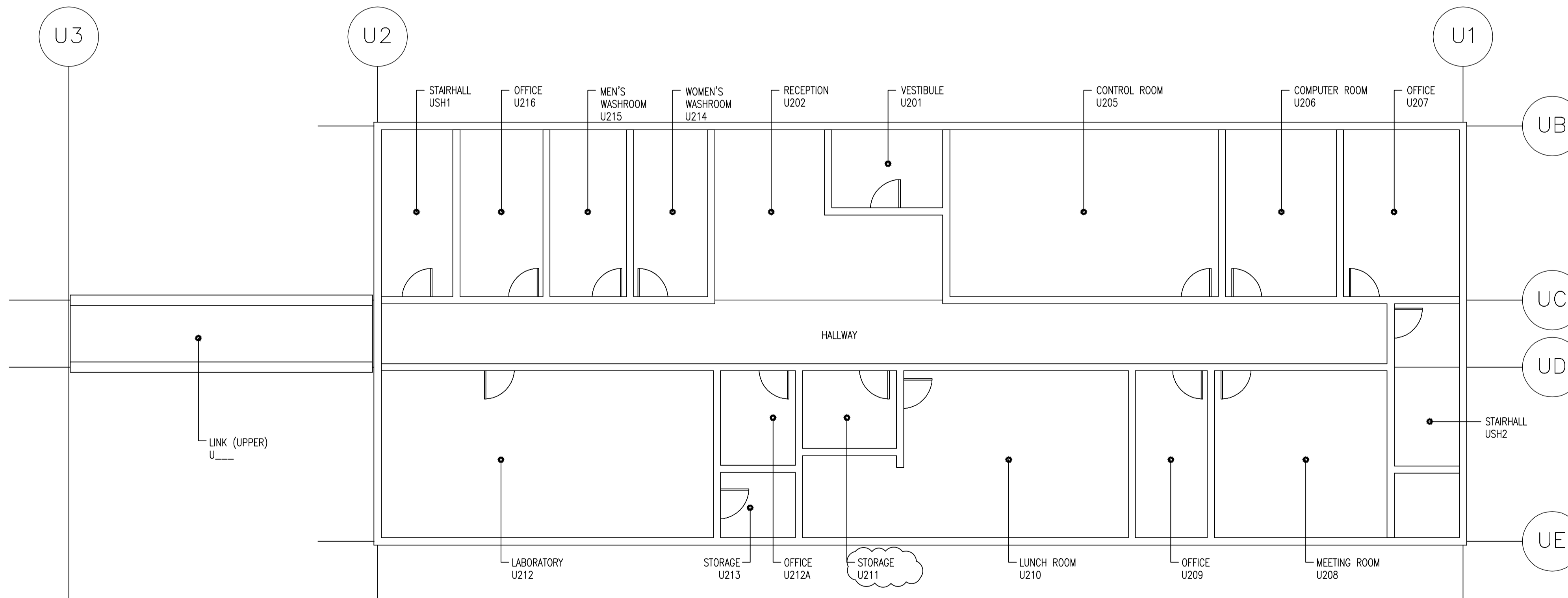


A GENERAL ARRANGEMENT - BASEMENT - PLAN
SCALE 1:100



KEY PLAN



B GENERAL ARRANGEMENT - MAIN FLOOR - PLAN
SCALE 1:100

GENERAL NOTES

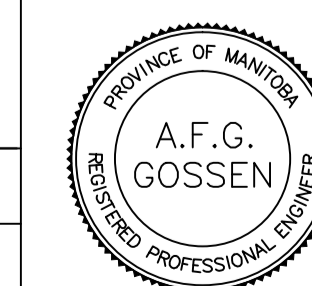
1. PERFORM ALL WORK IN ACCORDANCE WITH ALL APPLICABLE CODES, STANDARDS AND PROVINCIAL MECHANICAL ENGINEERING & INSPECTIONS BRANCH REQUIREMENTS.
2. COORDINATE WORKS WITH OTHER SUB-TRADES. REFER TO SPECIFIC DETAILS FOR CUTTING AND SEALING PENETRATIONS THROUGH OPENINGS & FIRE SEPARATIONS.
3. REFER TO TECHNICAL SPECIFICATIONS FOR EQUIPMENT AND MATERIAL SPECIFICATIONS AND INSTALLATION CONSTRUCTION AND PHASING REQUIREMENTS.
4. INSULATE DUCTWORK WHERE INDICATED AND SPECIFIED.
5. SUPPORT ALL DUCTWORK TO MEET CODE REQUIREMENTS & ESTABLISHED INDUSTRY TRADE PRACTICES, (SMACNA, ASHRAE).
6. INVESTIGATE SITE PRIOR TO CONSTRUCTION TO CONFIRM ALL DIMENSIONS AND INSTALLATION REQ'S.
7. PERFORM ALL CUTTING & PATCHING NECESSARY FOR ANY REQUIRED OPENINGS.
8. PROVIDE TAB TO ENSURE AIR DISTRIBUTION TO VOLUMES INDICATED.
9. NOT ALL EQUIPMENT/PIPING, ETC. IS SHOWN.



B.M. ELEV.	FIELD BOOK #:
POSTED TO LBIS	
DESIGNED BY DD	CHECKED BY
DRAWN BY DD	APPROVED BY
HOR. SCALE 1:100	RELEASED FOR CONSTRUCTION
VERTICAL	
00 ISSUED FOR TENDER 2010-12-21 AFG	
NO. REVISIONS	DATE BY
	DATE 2010-11-05

ALLIANCE
Engineering Services Inc.

ENGINEER'S SEAL



CONSULTANT DRAWING NO.
UM3.1



THE CITY OF WINNIPEG
WATER AND WASTE DEPARTMENT

2010 HVAC REPLACEMENT
AND ASSOCIATED WORKS
WEWPCC
AREA U - ADMINISTRATION BUILDING
GENERAL ARRANGEMENT

SHEET 1 OF 1
CITY DRAWING NUMBER
1-0103V-M0008-001