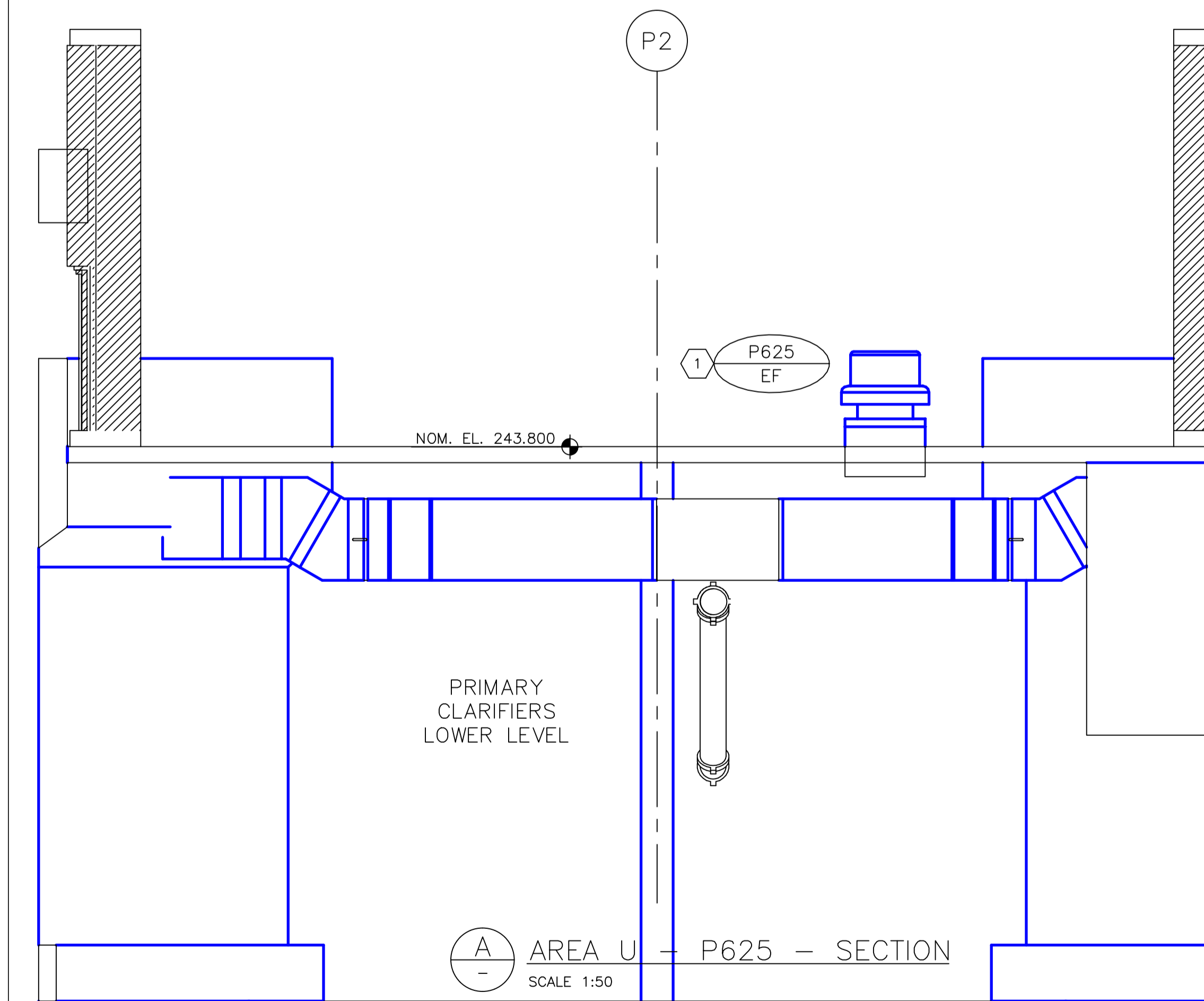
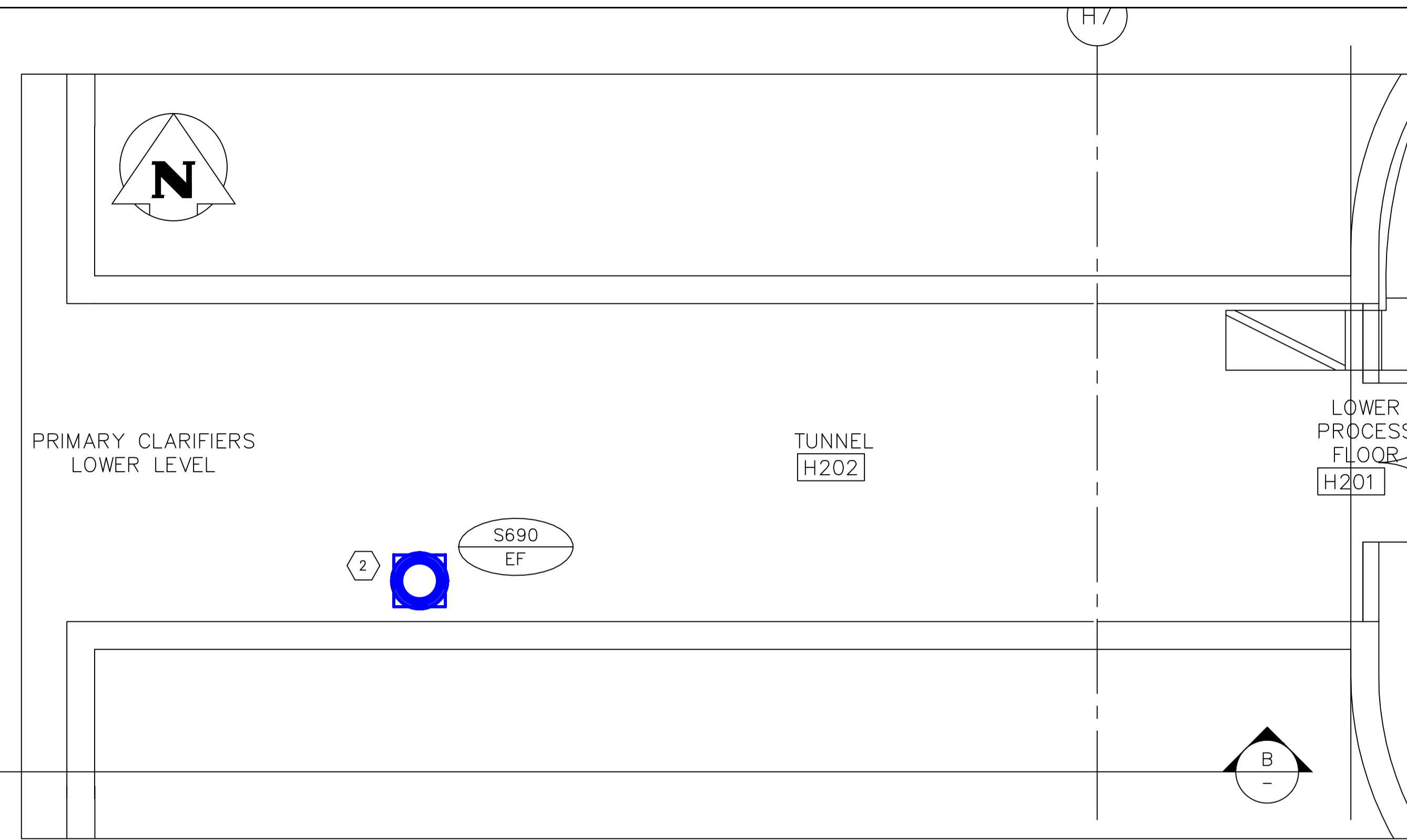


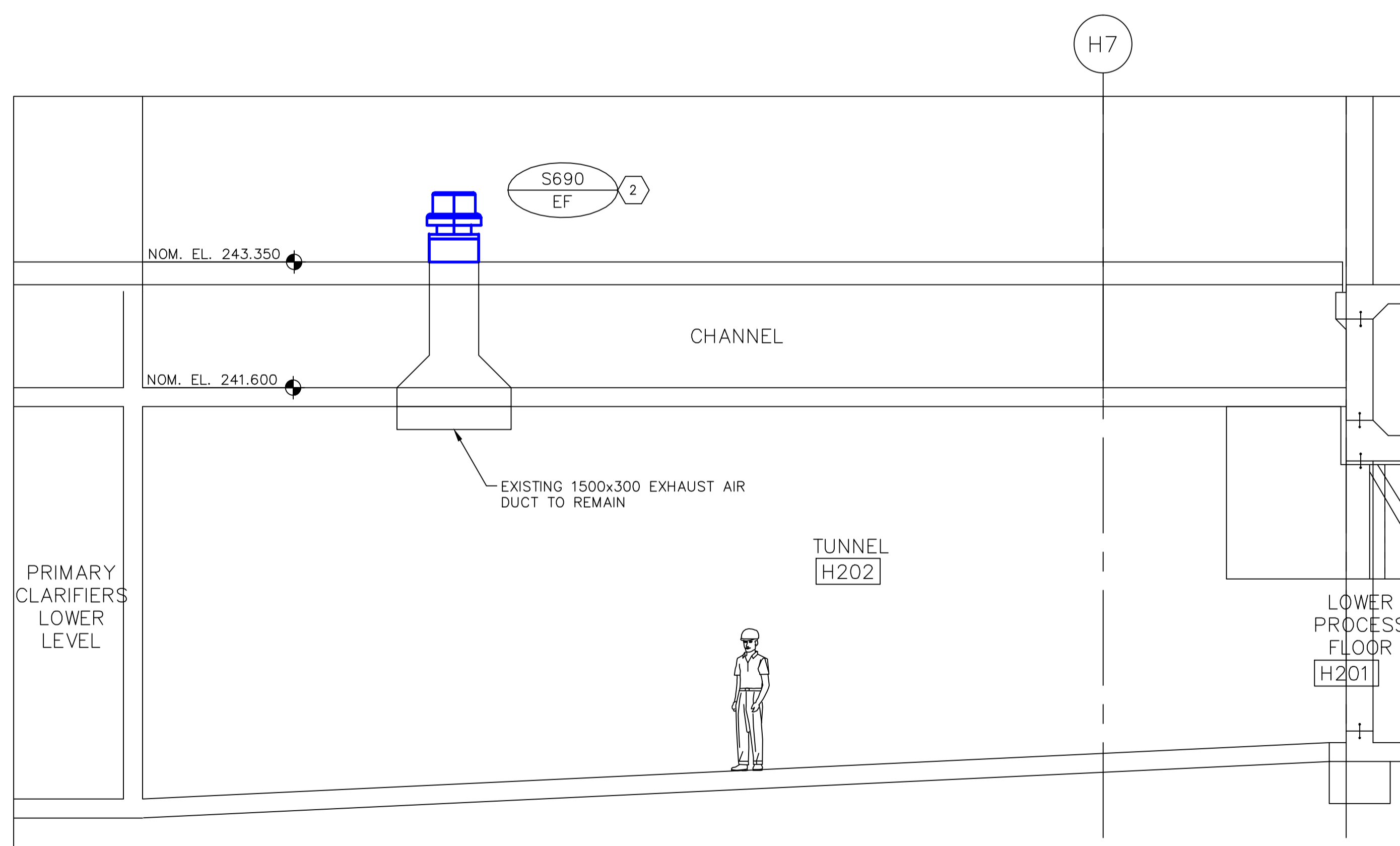
E AREA U - P625 - PART PLAN
UM1.1 SCALE 1:50



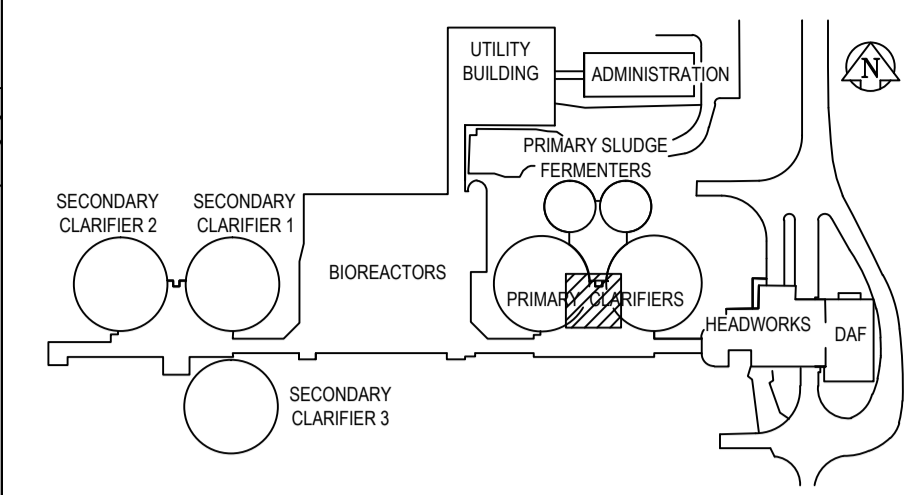
A AREA U - P625 - SECTION
SCALE 1:50



F AREA U - S690 - PART PLAN
UM1.1 SCALE 1:50



B AREA U - S690 - SECTION
SCALE 1:50



KEY PLAN

KEY NOTES

- EXISTING DOWNBLAST, BELT DRIVEN ROOF MOUNTED EXHAUST FAN P625-EF AND ROOF CURB TO BE REMOVED; ROOF OPENING TO REMAIN.
- EXISTING DOWNBLAST, BELT DRIVEN ROOF MOUNTED EXHAUST FAN S690-EF AND ROOF CURB TO BE REMOVED; ROOF OPENING TO REMAIN.

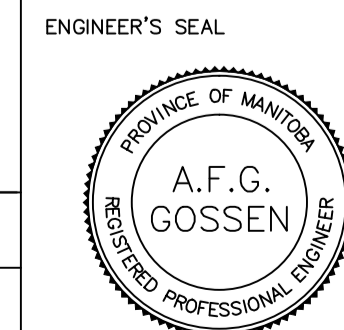
GENERAL NOTES

- PERFORM ALL WORK IN ACCORDANCE WITH ALL APPLICABLE CODES, STANDARDS AND PROVINCIAL MECHANICAL ENGINEERING & INSPECTIONS BRANCH REQUIREMENTS.
- COORDINATE WORKS WITH OTHER SUB-TRADES. REFER TO SPECIFIC DETAILS FOR CUTTING AND SEALING PENETRATIONS THROUGH OPENINGS & FIRE SEPARATIONS.
- REFER TO TECHNICAL SPECIFICATIONS FOR EQUIPMENT AND MATERIAL SPECIFICATIONS AND INSTALLATION CONSTRUCTION AND PHASING REQUIREMENTS.
- INSULATE DUCTWORK WHERE INDICATED AND SPECIFIED.
- SUPPORT ALL DUCTWORK TO MEET CODE REQUIREMENTS & ESTABLISHED INDUSTRY TRADE PRACTICES, (SMACNA, ASHRAE).
- INVESTIGATE SITE PRIOR TO CONSTRUCTION TO CONFIRM ALL DIMENSIONS AND INSTALLATION REQ'S.
- PERFORM ALL CUTTING & PATCHING NECESSARY FOR ANY REQUIRED OPENINGS.
- PROVIDE TAB TO ENSURE AIR DISTRIBUTION TO VOLUMES INDICATED.
- NOT ALL EQUIPMENT/PIPING, ETC. IS SHOWN.

APEGM
Certificate of Authorization
Alliance Engineering Services Inc.
No.2906 Date: _____

B.M. ELEV.	FIELD BOOK #:
POSTED TO LBIS	
DESIGNED BY	JC
CHECKED BY	AFG
DRAWN BY	JC
APPROVED BY	
HOR. SCALE	1:50
VERTICAL SCALE	1:50
00 ISSUED FOR TENDER	2010-12-21 AFG
NO. REVISIONS	DATE BY
	2010-08-10

ALLIANCE
Engineering Services Inc.



THE CITY OF WINNIPEG
WATER AND WASTE DEPARTMENT

2010 HVAC REPLACEMENT
AND ASSOCIATED WORKS
WEWPCC
AREA U - TUNNEL VENTILATION
P625 & S690 EXISTING CONDITIONS - PLAN & SECTION

SHEET 1 OF 1
CITY DRAWING NUMBER
1-0103V-M0004-001

CONSULTANT DRAWING NO.
UM1.4