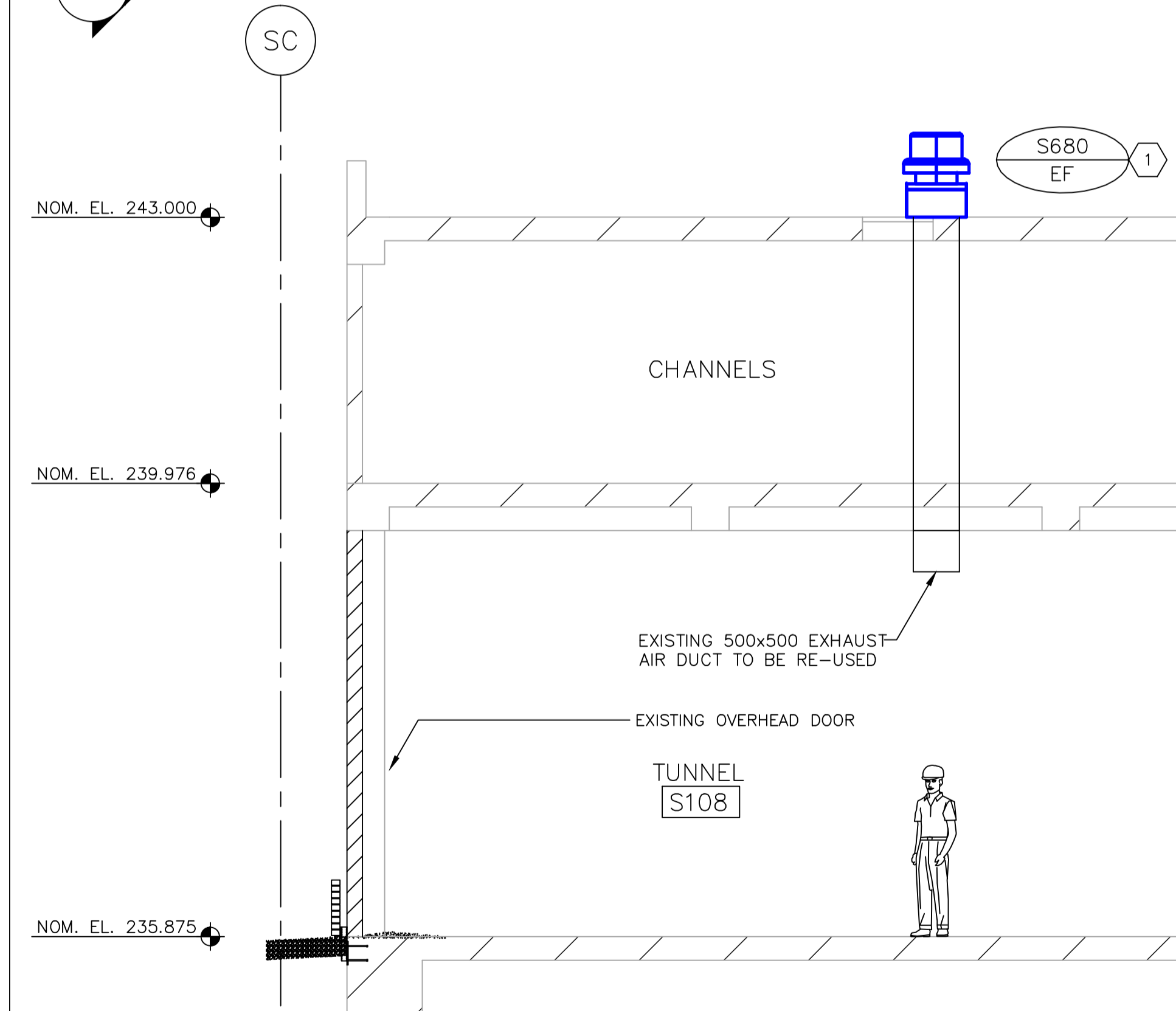
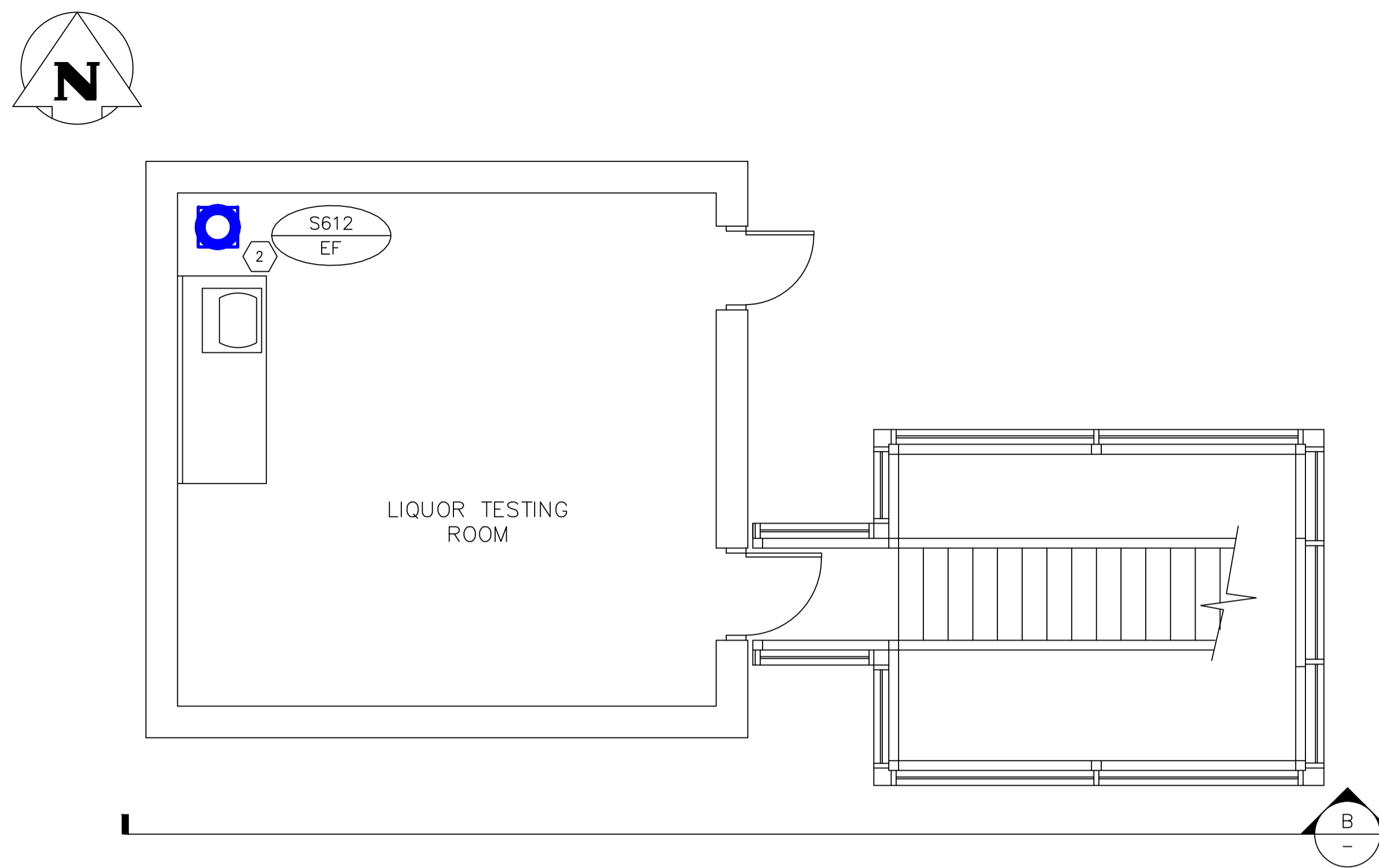


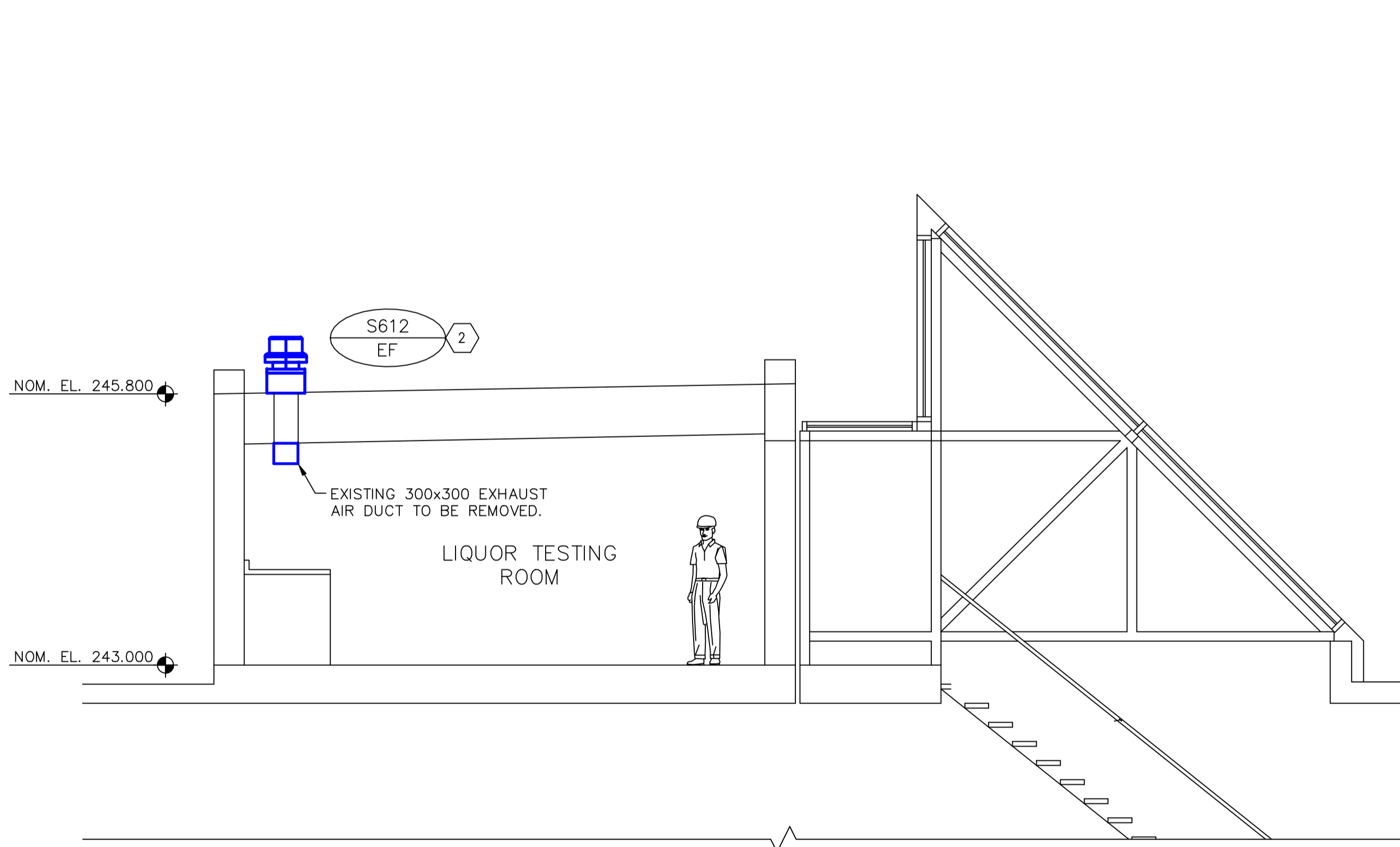
C AREA U - S680 - PART PLAN
UM1.1 SCALE 1:50



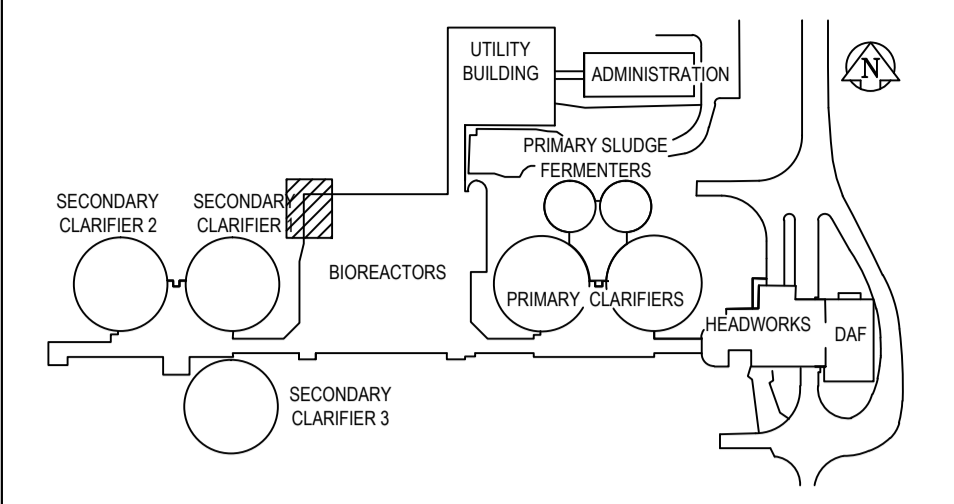
A AREA U - S680 - SECTION
SCALE 1:50



D AREA U - S612 - PART PLAN
UM1.1 SCALE 1:50



B AREA U - S612 - SECTION
SCALE 1:50



KEY PLAN

- KEY NOTES**
- 1 EXISTING DOWNBLAST, BELT DRIVEN ROOF MOUNTED EXHAUST FAN S680-EF AND ROOF CURB TO BE REMOVED; ROOF OPENING TO REMAIN.
 - 2 EXISTING DOWNBLAST, BELT DRIVEN ROOF MOUNTED EXHAUST FAN S612-EF AND ROOF CURB TO BE REMOVED; ROOF OPENING TO REMAIN.

- GENERAL NOTES**
1. PERFORM ALL WORK IN ACCORDANCE WITH ALL APPLICABLE CODES, STANDARDS AND PROVINCIAL MECHANICAL ENGINEERING & INSPECTIONS BRANCH REQUIREMENTS.
 2. COORDINATE WORKS WITH OTHER SUB-TRADES. REFER TO SPECIFIC DETAILS FOR CUTTING AND SEALING PENETRATIONS THROUGH OPENINGS & FIRE SEPARATIONS.
 3. REFER TO TECHNICAL SPECIFICATIONS FOR EQUIPMENT AND MATERIAL SPECIFICATIONS AND INSTALLATION CONSTRUCTION AND PHASING REQUIREMENTS.
 4. INSULATE DUCTWORK WHERE INDICATED AND SPECIFIED.
 5. SUPPORT ALL DUCTWORK TO MEET CODE REQUIREMENTS & ESTABLISHED INDUSTRY TRADE PRACTICES, (SMACNA, ASHRAE).
 6. INVESTIGATE SITE PRIOR TO CONSTRUCTION TO CONFIRM ALL DIMENSIONS AND INSTALLATION REQ'S.
 7. PERFORM ALL CUTTING & PATCHING NECESSARY FOR ANY REQUIRED OPENINGS.
 8. PROVIDE TAB TO ENSURE AIR DISTRIBUTION TO VOLUMES INDICATED.
 9. NOT ALL EQUIPMENT/PIPING, ETC. IS SHOWN.

 Alliance Engineering Services Inc. No.2906 Date: _____	B.M. ELEV.	FIELD BOOK #:	 ALLIANCE <i>Engineering Services Inc.</i>	ENGINEER'S SEAL
	POSTED TO LBIS			DESIGNED BY JC
			DRAWN BY JC	APPROVED BY
			HOR. SCALE 1:50	RELEASED FOR CONSTRUCTION
			VERTICAL 1:50	
00 ISSUED FOR TENDER	2010-12-21	AFG		CONSULTANT DRAWING NO. UM1.3
NO. REVISIONS	DATE	BY	DATE 2010-08-10	

 THE CITY OF WINNIPEG WATER AND WASTE DEPARTMENT	2010 HVAC REPLACEMENT AND ASSOCIATED WORKS WEWPCC AREA U - TUNNEL VENTILATION S612 & S680 EXISTING CONDITIONS - PLAN & SECTION	SHEET 1 OF 1 CITY DRAWING NUMBER 1-0103V-M003-001