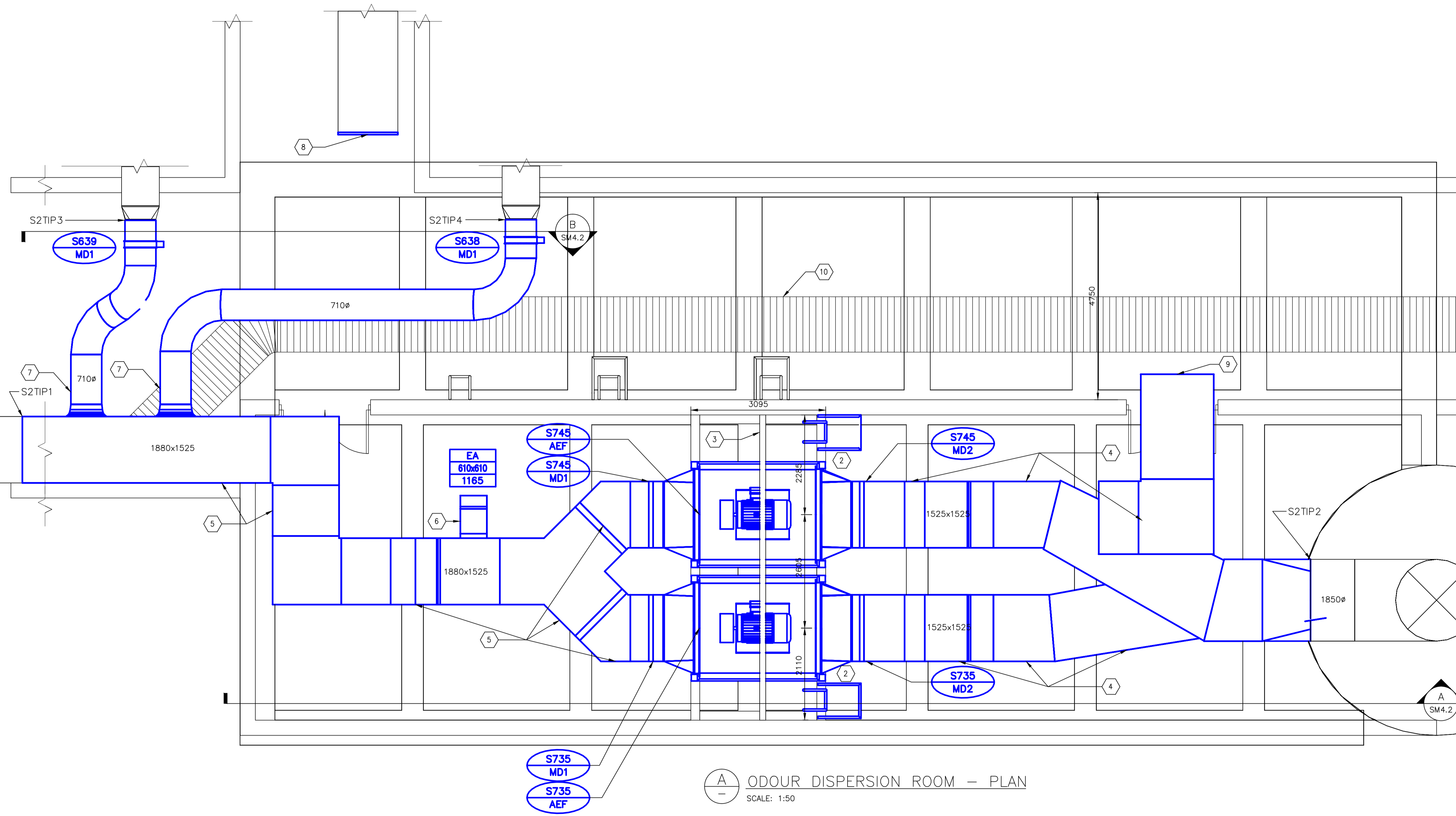


KEY PLAN

KEY NOTES

- 1 PROVIDE NEW EXHAUST FANS, S735 & S745 AND THEIR ASSOCIATED 1880x1525 INTAKE AND 1500x1500 DISCHARGE MOTORIZED DAMPERS. PROVIDE EXHAUST FAN 1880x1525 FLANGE PLATES TO SIT DIRECTLY ON MOTORIZED DAMPERS. SEE SPECIFICATIONS AND MANUFACTURER'S INSTALLATION REQUIREMENTS FOR DETAILS.
- 2 PROVIDE NEW STRUCTURAL SUPPORT/MAINTENANCE PLATFORM FOR S735 & S745, COORDINATE WITH STRUCTURAL. PROVIDE ACCESS LADDERS ON EAST AND WEST SIDES OF PLATFORM, SEE DWG SM4.2 FOR DETAILS.
- 3 PROVIDE NEW MONORAIL TO FACILITATE INSTALLATION & FUTURE MAINTENANCE OF S735 & S745, COORDINATE WITH STRUCTURAL. MONORAIL SIZE AND INSTALLATION TO BE FINALIZED BY STRUCTURAL.
- 4 NEW S735 & S745 DISCHARGE DUCTWORK, RUN NEW STAINLESS STEEL DUCT FROM FLEXIBLE DUCT AT DISCHARGE OF FAN TO MAIN EXHAUST STACK TRANSITION, SUPPORT DUCTWORK AS SPECIFIED. DISCHARGE DUCTWORK INCLUDES CUSTOM 1525x1525-1850x1850 FABRICATED WYE FITTING & TRANSITION TO 1850Ø. SEE DWG SM4.2 FOR DETAILS.
- 5 NEW S735 & S745 INLET DUCTWORK, RUN NEW STAINLESS STEEL DUCT FROM GENERAL EXHAUST DUCT TIE-IN LOCATION TO FLEXIBLE DUCT AT INLET OF FAN, SUPPORT DUCTWORK AS SPECIFIED. SUCTION DUCTWORK INCLUDES WYE FITTING & VERTICAL TRANSITION TO ACCOMMODATE NEW S735 & S745 ELEVATION. SEE DWG SM4.2 FOR DETAILS.
- 6 NEW STAINLESS STEEL INLET EXHAUST BOOT C/W BALANCING DAMPER TO EXHAUST ODS ROOM, PROVIDE STAINLESS STEEL EXPANDED METAL SCREEN AT END OF DISCHARGE.
- 7 NEW STAINLESS STEEL BIOREACTOR DUCT C/W NEW MOTORIZED DAMPER; SIZE TO MATCH NEW DUCT. RUN FROM TIE-IN LOCATION EAST OF THE BIOREACTORS TO THE NEW GENERAL EXHAUST DUCT WITHIN THE HALLWAY, PROVIDE TAKE-OFFS FROM NEW GENERAL EXHAUST DUCT.
- 8 PROVIDE NEW STAINLESS STEEL CAP FOR EXISTING GENERAL EXHAUST DUCT RUN FROM THE SECONDARY CLARIFIER AREA, SEAL AIR TIGHT.
- 9 PROVIDE OPENING THROUGH CONC. WALL TO ACCOMMODATE NEW 1625x510 AIR TRANSFER DUCT & ACOUSTIC ELBOW, PROVIDE FIRE DAMPER TO MEET FIRE RATING OF WALL, SEE SPECIFICATIONS FOR DETAILS. SEE STRUCTURAL DWG FOR CONC. WALL PENETRATION DETAIL.
- 10 EXISTING CABLE TRAY THROUGH HALLWAY TO REMAIN.



(A) ODOUR DISPERSION ROOM - PLAN
SCALE: 1:50

ODS AREA TIP SCHEDULE

TIP NO.	DESCRIPTION.	NOTES
S2TIP1	TIE INTO EXISTING GENERAL EXHAUST DUCT FROM PRIMARY/HEADWORKS AREAS WITH SAME SIZE DUCT	CONTRACTOR TO FIELD VERIFY GENERAL EXHAUST DUCT SIZE
S2TIP2	TIE INTO EXISTING 1850Ø STACK ENTRY DUCT	CONTRACTOR TO FIELD VERIFY EXISTING DUCT SIZE
S2TIP3	TIE INTO EXISTING BIOREACTOR DUCT EAST OF BIOREACTOR WALL	CONTRACTOR TO FIELD VERIFY EXISTING DUCT SIZE
S2TIP4	TIE INTO EXISTING BIOREACTOR DUCT EAST OF BIOREACTOR WALL	CONTRACTOR TO FIELD VERIFY EXISTING DUCT SIZE

GENERAL NOTES

1. PERFORM ALL WORK IN ACCORDANCE WITH ALL APPLICABLE CODES, STANDARDS AND PROVINCIAL MECHANICAL ENGINEERING & INSPECTIONS BRANCH REQUIREMENTS.
2. COORDINATE WORKS WITH OTHER SUB-TRADES. REFER TO SPECIFIC DETAILS FOR CUTTING AND SEALING PENETRATIONS THROUGH OPENINGS & FIRE SEPARATIONS.
3. REFER TO TECHNICAL SPECIFICATIONS FOR EQUIPMENT AND MATERIAL SPECIFICATIONS AND INSTALLATION CONSTRUCTION AND PHASING REQUIREMENTS.
4. INSULATE DUCTWORK WHERE INDICATED AND SPECIFIED.
5. SUPPORT ALL DUCTWORK TO MEET CODE REQUIREMENTS & ESTABLISHED INDUSTRY TRADE PRACTICES, (SMACNA, ASHRAE).
6. INVESTIGATE SITE PRIOR TO CONSTRUCTION TO CONFIRM ALL DIMENSIONS AND INSTALLATION REQ'S.
7. PERFORM ALL CUTTING & PATCHING NECESSARY FOR ANY REQUIRED OPENINGS.
8. PROVIDE TAB TO ENSURE AIR DISTRIBUTION TO VOLUMES INDICATED.
9. NOT ALL EQUIPMENT/PIPING, ETC. IS SHOWN.

APEGM
Certificate of Authorization
Alliance Engineering Services Inc.
No.2906 Date: _____

NO.	REVISIONS	DATE	BY
00	ISSUED FOR TENDER	2010-12-21	AFG

ALLIANCE
Engineering Services Inc.

DESIGNED BY IU	CHECKED BY
DRAWN BY IU	APPROVED BY
HOR. SCALE 1:50	RELEASED FOR CONSTRUCTION
VERTICAL 1:50	DATE 2009 11 19

ENGINEER'S SEAL
PROVINCE OF MANITOBA
A.F.G. GOSSSEN
REGISTERED PROFESSIONAL ENGINEER

THE CITY OF WINNIPEG
WATER AND WASTE DEPARTMENT

2010 HVAC REPLACEMENT
AND ASSOCIATED WORKS
WEWPCC
AREA S - ODOUR DISPERSION ROOM
HVAC - NEW CONDITIONS - PLAN

SHEET 1 OF 1
CITY DRAWING NUMBER
1-0103S-M0026-001