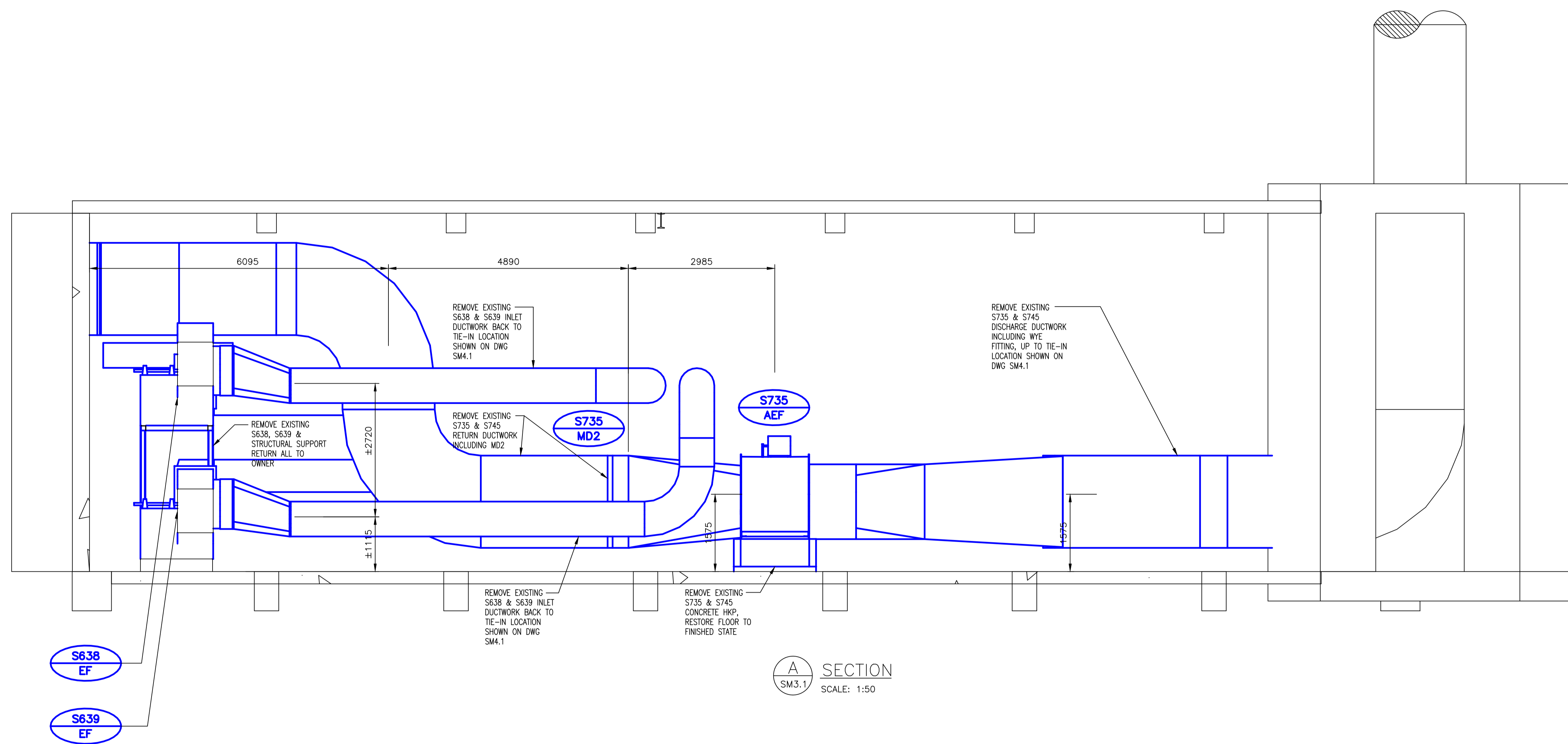


KEY PLAN



SECTION A-SM3.1
SCALE: 1:50

GENERAL NOTES

- PERFORM ALL WORK IN ACCORDANCE WITH ALL APPLICABLE CODES, STANDARDS AND PROVINCIAL MECHANICAL ENGINEERING & INSPECTIONS BRANCH REQUIREMENTS.
- COORDINATE WORKS WITH OTHER SUB-TRADES. REFER TO SPECIFIC DETAILS FOR CUTTING AND SEALING PENETRATIONS THROUGH OPENINGS & FIRE SEPARATIONS.
- REFER TO TECHNICAL SPECIFICATIONS FOR EQUIPMENT AND MATERIAL SPECIFICATIONS AND INSTALLATION CONSTRUCTION AND PHASING REQUIREMENTS.
- INSULATE DUCTWORK WHERE INDICATED AND SPECIFIED.
- SUPPORT ALL DUCTWORK TO MEET CODE REQUIREMENTS & ESTABLISHED INDUSTRY TRADE PRACTICES, (SMACNA, ASHRAE).
- INVESTIGATE SITE PRIOR TO CONSTRUCTION TO CONFIRM ALL DIMENSIONS AND INSTALLATION REQ'S.
- PERFORM ALL CUTTING & PATCHING NECESSARY FOR ANY REQUIRED OPENINGS.
- PROVIDE TAB TO ENSURE AIR DISTRIBUTION TO VOLUMES INDICATED.
- NOT ALL EQUIPMENT/PIPING, ETC. IS SHOWN.

APEGM
Certificate of Authorization
Alliance Engineering Services Inc.
No.2906 Date: _____

B.M. ELEV.	FIELD BOOK #:
POSTED TO LBIS	
DESIGNED BY	IU
CHECKED BY	
DRAWN BY	IU
APPROVED BY	
HOR. SCALE	1:50
VERTICAL	1:50
00 ISSUED FOR TENDER	2010-12-21 AFG
NO. REVISIONS	DATE BY
	2009 11 19

ALLIANCE
Engineering Services Inc.

ENGINEER'S SEAL
PROVINCE OF MANITOBA
A.F.G. GOSSEN
REGISTERED PROFESSIONAL ENGINEER

CONSULTANT DRAWING NO.
SM3.2

RELEASED FOR CONSTRUCTION

ENGINEER'S SEAL
PROVINCE OF MANITOBA
A.F.G. GOSSEN
REGISTERED PROFESSIONAL ENGINEER

THE CITY OF WINNIPEG
WATER AND WASTE DEPARTMENT

2010 HVAC REPLACEMENT
AND ASSOCIATED WORKS
WEWPCC
AREA S – ODOUR DISPERSION ROOM
HVAC – EXISTING CONDITIONS – SECTION

SHEET 1 OF 1
CITY DRAWING NUMBER
1-0103S-M0024-001