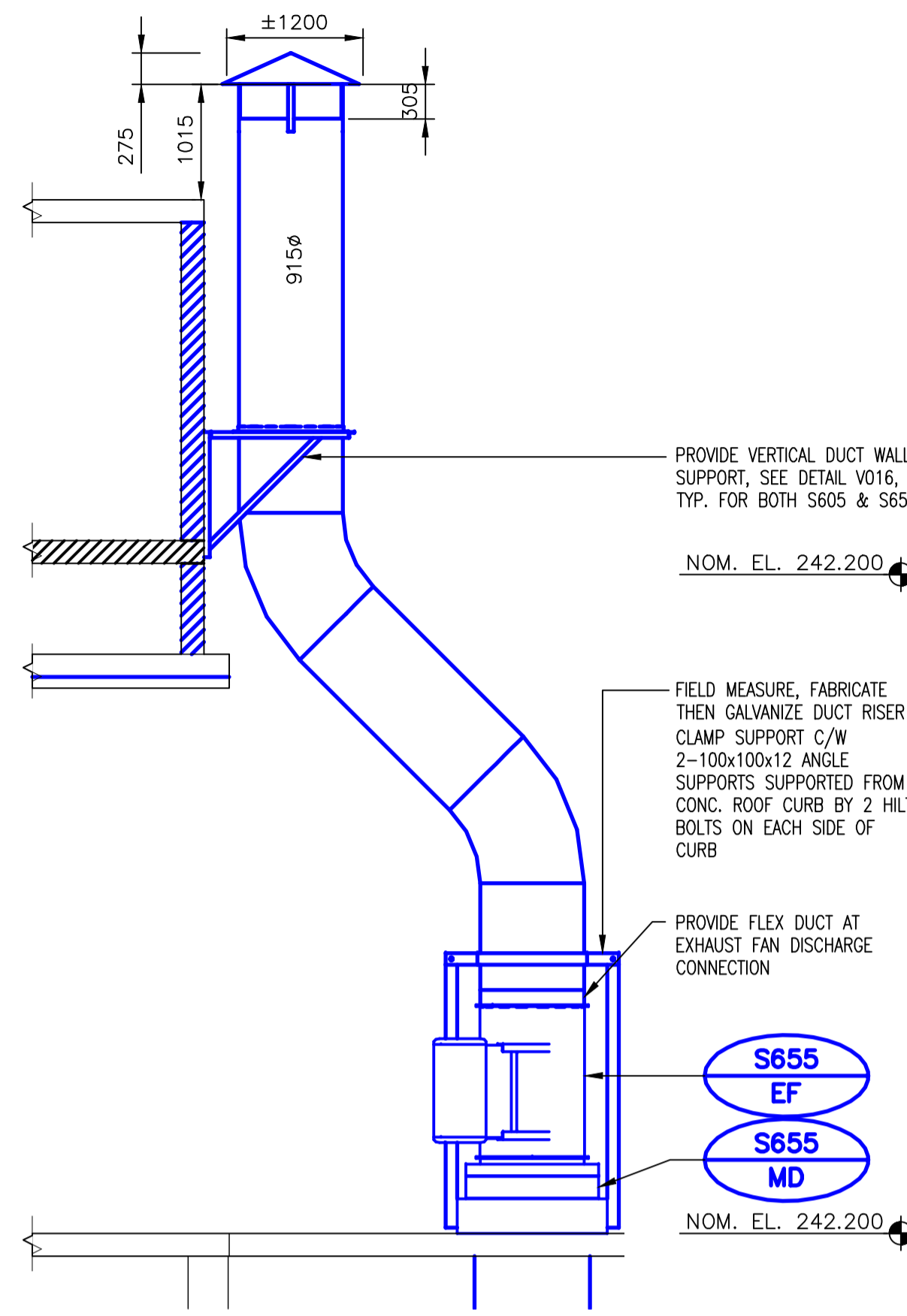


A SECTION
SM2.4 SCALE 1:50

NOM. EL. 242.200

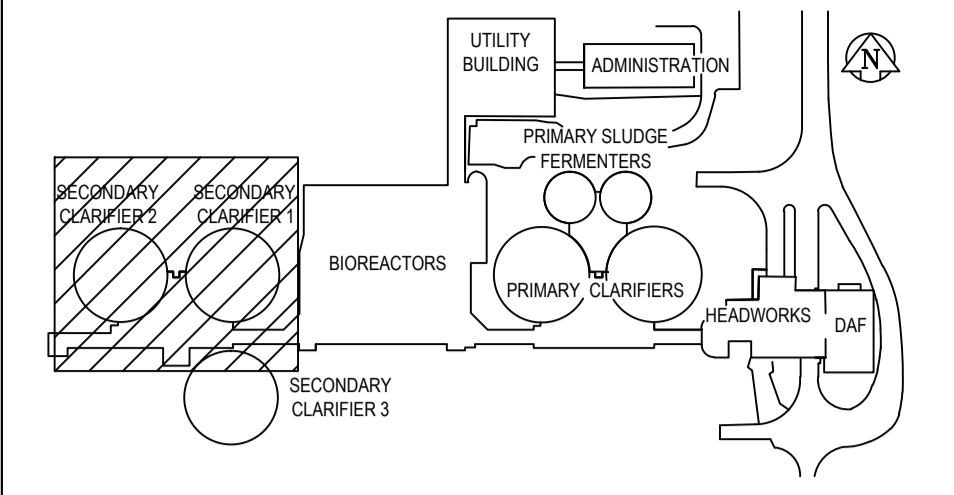
NOM. EL. 236.200



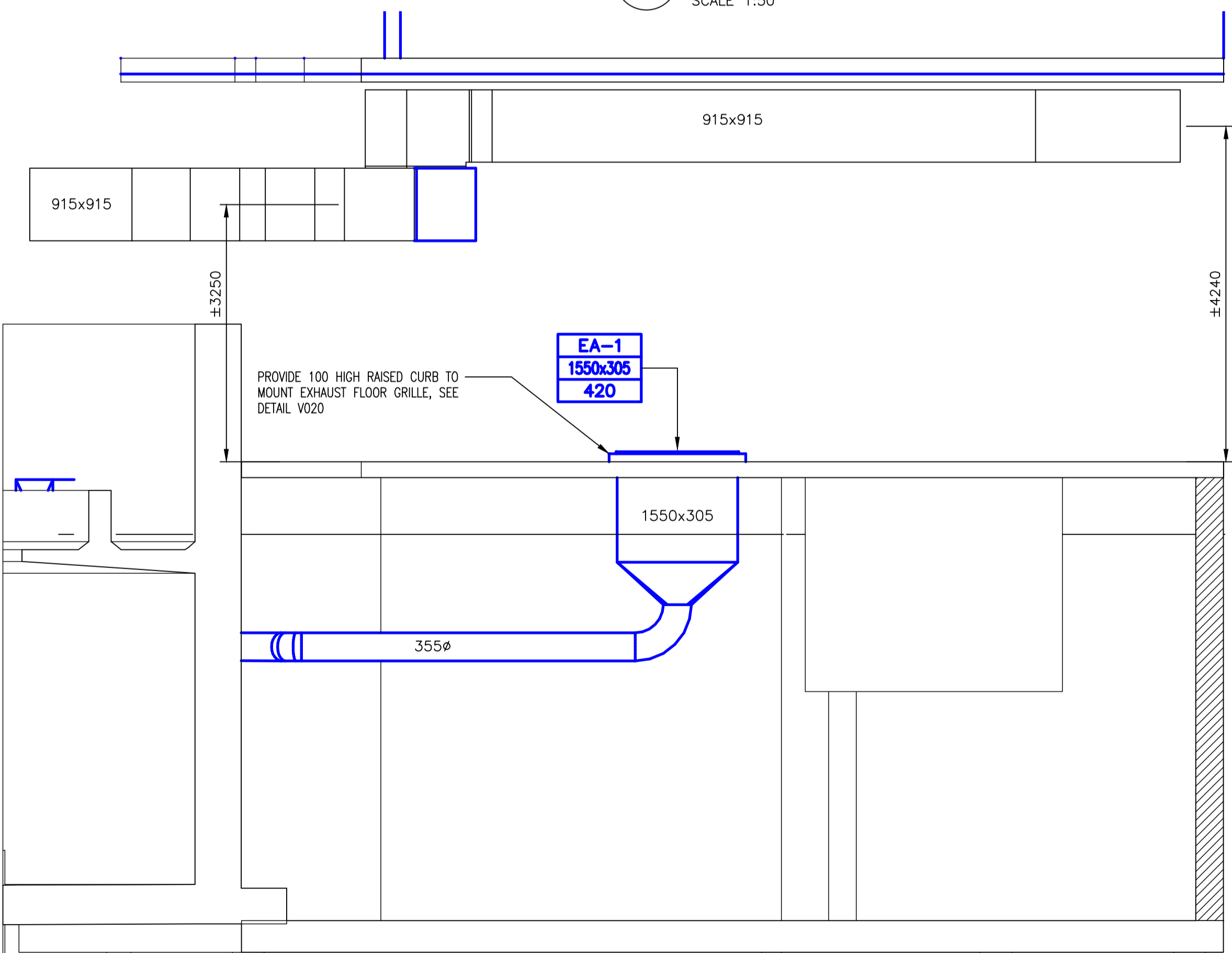
C SECTION
SM2.4 SCALE 1:50

NOM. EL. 242.200

NOM. EL. 242.200



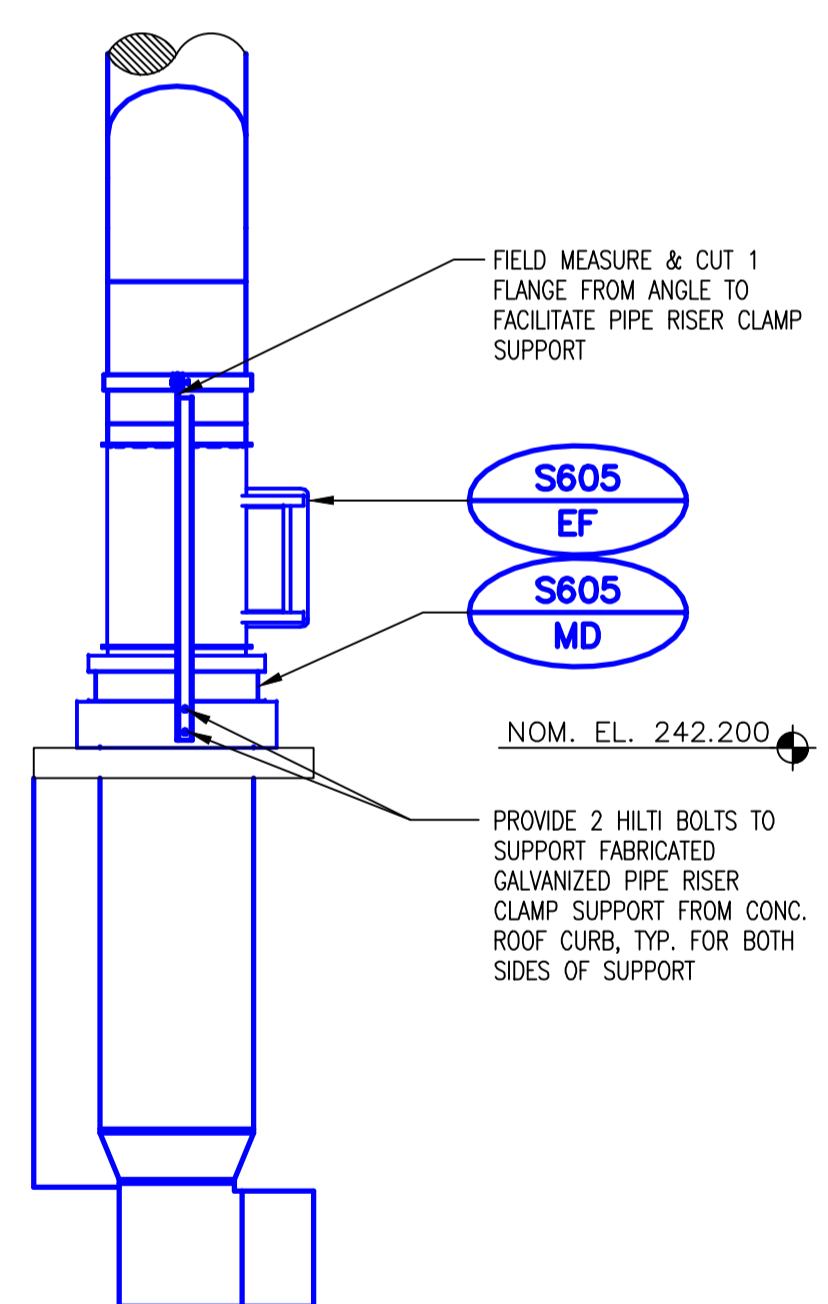
KEY PLAN



B SECTION
SM2.4 SCALE 1:50

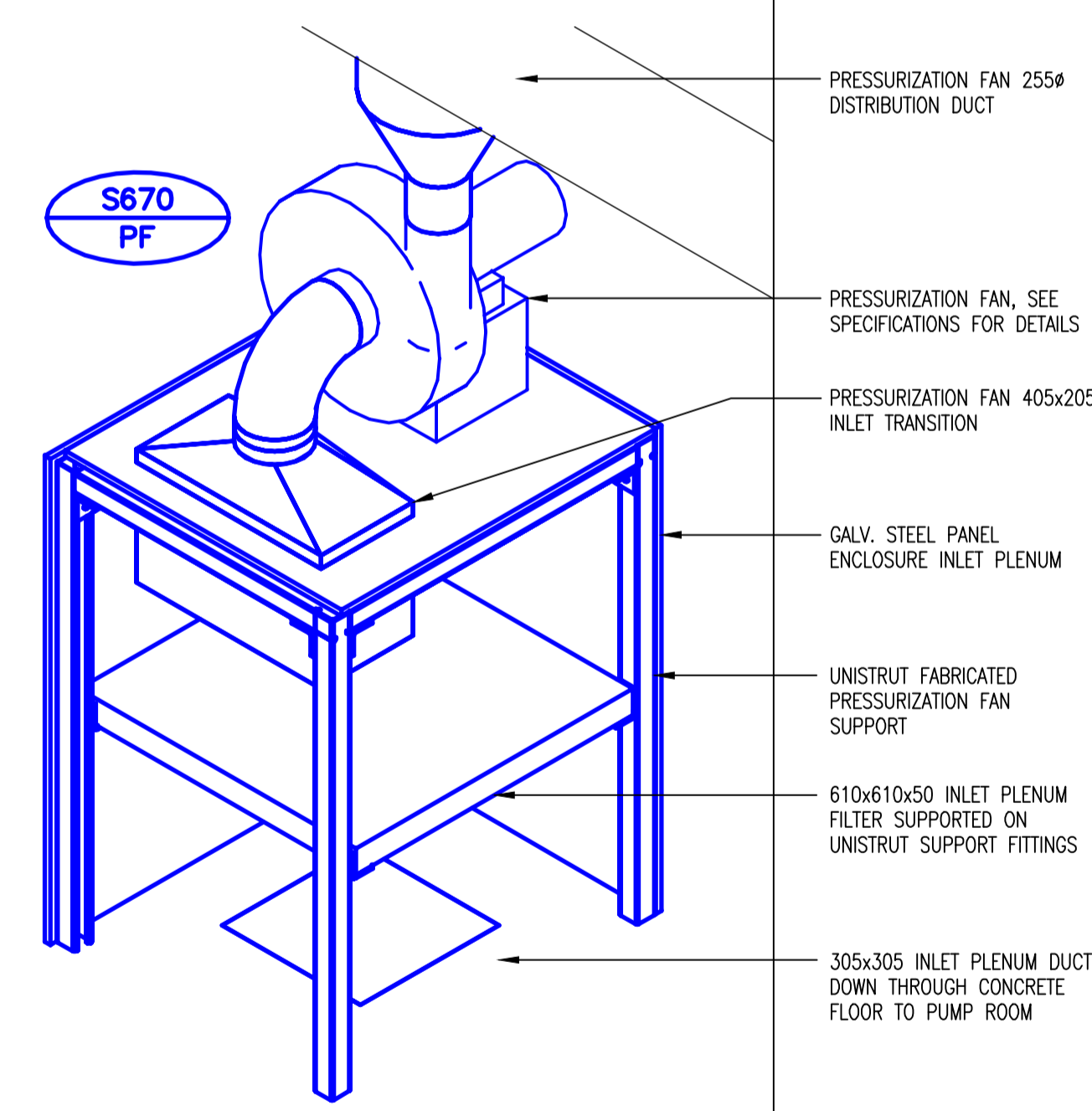
NOM. EL. 242.200

NOM. EL. 236.200



D SECTION
SM2.4 SCALE 1:50

NOM. EL. 242.200



E DETAIL
SM2.4 SCALE N.T.S.

- GENERAL NOTES**
- PERFORM ALL WORK IN ACCORDANCE WITH ALL APPLICABLE CODES, STANDARDS AND PROVINCIAL MECHANICAL ENGINEERING & INSPECTIONS BRANCH REQUIREMENTS.
 - COORDINATE WORKS WITH OTHER SUB-TRADES. REFER TO SPECIFIC DETAILS FOR CUTTING AND SEALING PENETRATIONS THROUGH OPENINGS & FIRE SEPARATIONS.
 - REFER TO TECHNICAL SPECIFICATIONS FOR EQUIPMENT AND MATERIAL SPECIFICATIONS AND INSTALLATION CONSTRUCTION AND PHASING REQUIREMENTS.
 - INSULATE DUCTWORK WHERE INDICATED AND SPECIFIED.
 - SUPPORT ALL DUCTWORK TO MEET CODE REQUIREMENTS & ESTABLISHED INDUSTRY TRADE PRACTICES, (SMACNA, ASHRAE).
 - INVESTIGATE SITE PRIOR TO CONSTRUCTION TO CONFIRM ALL DIMENSIONS AND INSTALLATION REQ'S.
 - PERFORM ALL CUTTING & PATCHING NECESSARY FOR ANY REQUIRED OPENINGS.
 - PROVIDE TAB TO ENSURE AIR DISTRIBUTION TO VOLUMES INDICATED.
 - NOT ALL EQUIPMENT/PIPING, ETC. IS SHOWN.

APEGN
Certificate of Authorization
Alliance Engineering Services Inc.
No.2906 Date: _____

B.M. ELEV.	FIELD BOOK #:
POSTED TO LBIS	
DESIGNED BY IU	CHECKED BY AG
DRAWN BY IU	APPROVED BY
HOR. SCALE 1:50	RELEASED FOR CONSTRUCTION
VERTICAL 1:50	
00 ISSUED FOR TENDER 2010-12-21 AFG	
NO. REVISIONS	DATE BY
	DATE 2010-02-23

ALLIANCE
Engineering Services Inc.

ENGINEER'S SEAL
PROVINCE OF MANITOBA
A.F.G. GOSSSEN
REGISTERED PROFESSIONAL ENGINEER

CONSULTANT DRAWING NO. SM2.5

THE CITY OF WINNIPEG
WATER AND WASTE DEPARTMENT

2010 HVAC REPLACEMENT AND ASSOCIATED WORKS
WEWPCC

AREA S - SECONDARY CLARIFIERS 1 & 2
DISTRIBUTION BUILDING - NEW SECTIONS

SHEET 1 OF 1
CITY DRAWING NUMBER
1-0103S-M0018-001