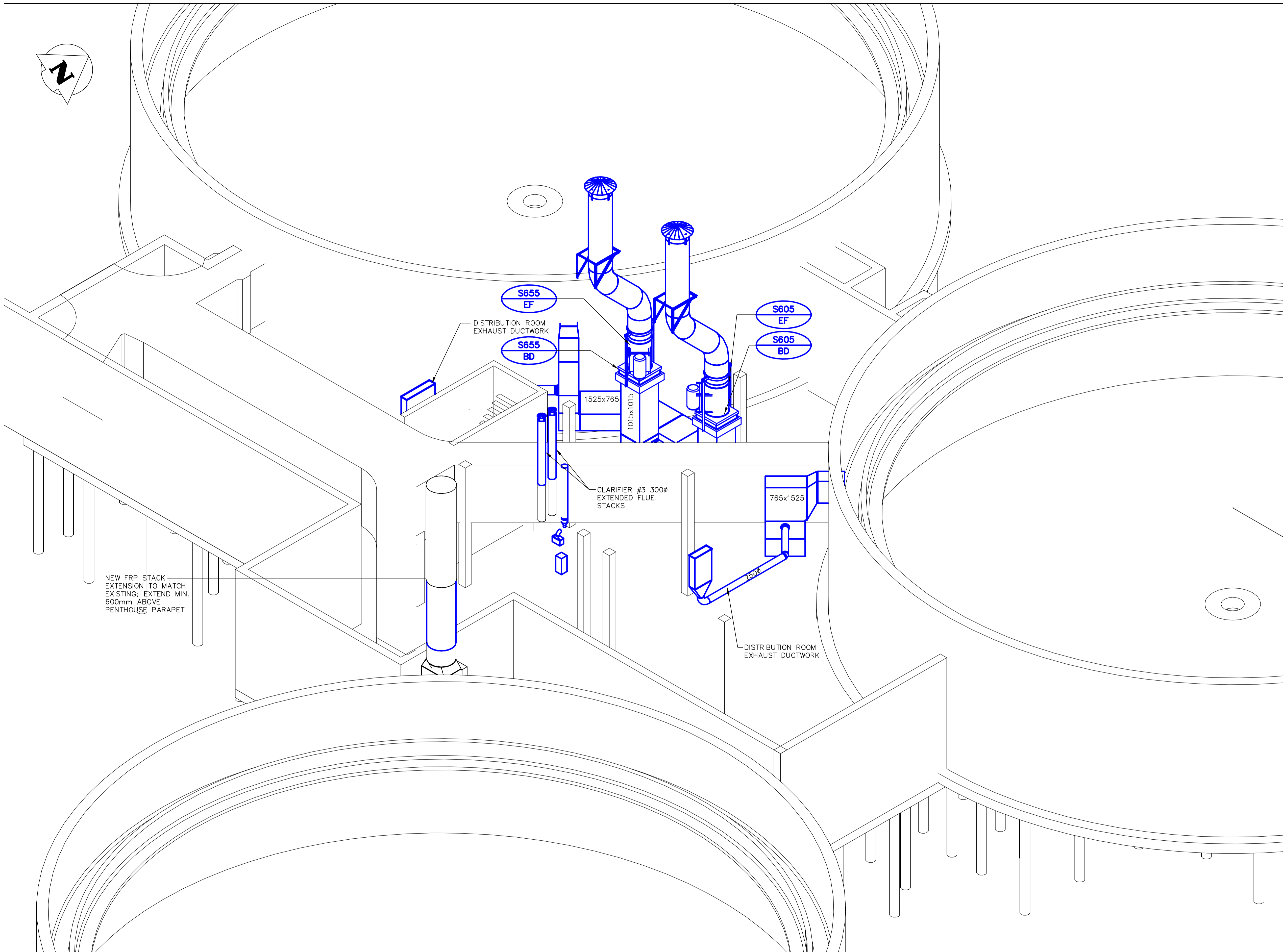


KEY PLAN

765x1525



- GENERAL NOTES**
- PERFORM ALL WORK IN ACCORDANCE WITH ALL APPLICABLE CODES, STANDARDS AND PROVINCIAL MECHANICAL ENGINEERING & INSPECTIONS BRANCH REQUIREMENTS.
  - COORDINATE WORKS WITH OTHER SUB-TRADES. REFER TO SPECIFIC DETAILS FOR CUTTING AND SEALING PENETRATIONS THROUGH OPENINGS & FIRE SEPARATIONS.
  - REFER TO TECHNICAL SPECIFICATIONS FOR EQUIPMENT AND MATERIAL SPECIFICATIONS AND INSTALLATION CONSTRUCTION AND PHASING REQUIREMENTS.
  - INSULATE DUCTWORK WHERE INDICATED AND SPECIFIED.
  - SUPPORT ALL DUCTWORK TO MEET CODE REQUIREMENTS & ESTABLISHED INDUSTRY TRADE PRACTICES, (SMACNA, ASHRAE).
  - INVESTIGATE SITE PRIOR TO CONSTRUCTION TO CONFIRM ALL DIMENSIONS AND INSTALLATION REQ'S.
  - PERFORM ALL CUTTING & PATCHING NECESSARY FOR ANY REQUIRED OPENINGS.
  - PROVIDE TAB TO ENSURE AIR DISTRIBUTION TO VOLUMES INDICATED.
  - NOT ALL EQUIPMENT/PIPING, ETC. IS SHOWN.

**A** AREA S - PUMP ROOM - ISOMETRIC  
- N.T.S.



B.M. ELEV.	FIELD BOOK #:
POSTED TO LBIS	
00 ISSUED FOR TENDER	2010-12-21 AFG
NO. REVISIONS	DATE BY

**ALLIANCE**  
Engineering Services Inc.

DESIGNED BY IU	CHECKED BY AG
DRAWN BY IU	APPROVED BY
HOR. SCALE N.T.S.	RELEASED FOR CONSTRUCTION
VERTICAL N.T.S.	
DATE 2010-02-23	DATE

ENGINEER'S SEAL

CONSULTANT DRAWING NO. SM2.3

**THE CITY OF WINNIPEG**  
WATER AND WASTE DEPARTMENT

2010 HVAC REPLACEMENT AND ASSOCIATED WORKS  
WEWPCC  
AREA S - SECONDARY CLARIFIERS 1 & 2  
PUMP ROOM - NEW ISOMETRIC

SHEET 1 OF 1  
CITY DRAWING NUMBER  
1-0103S-M0016-001