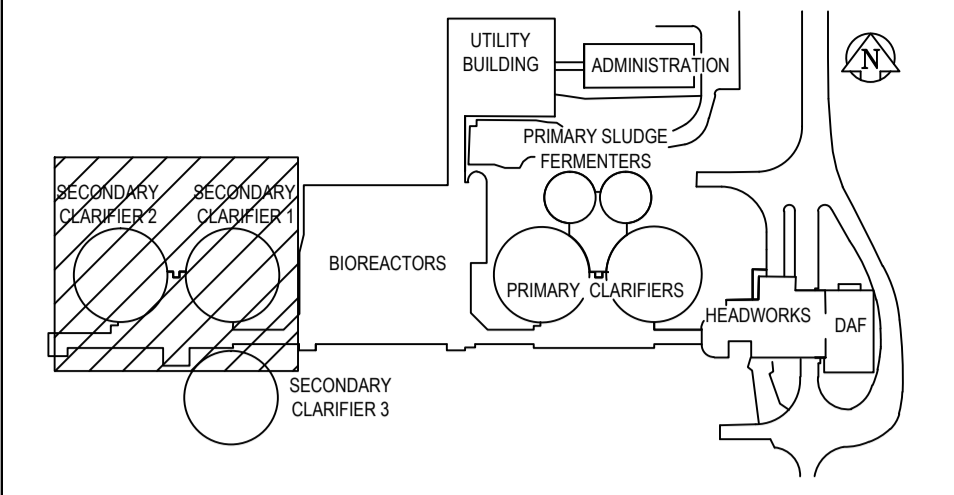
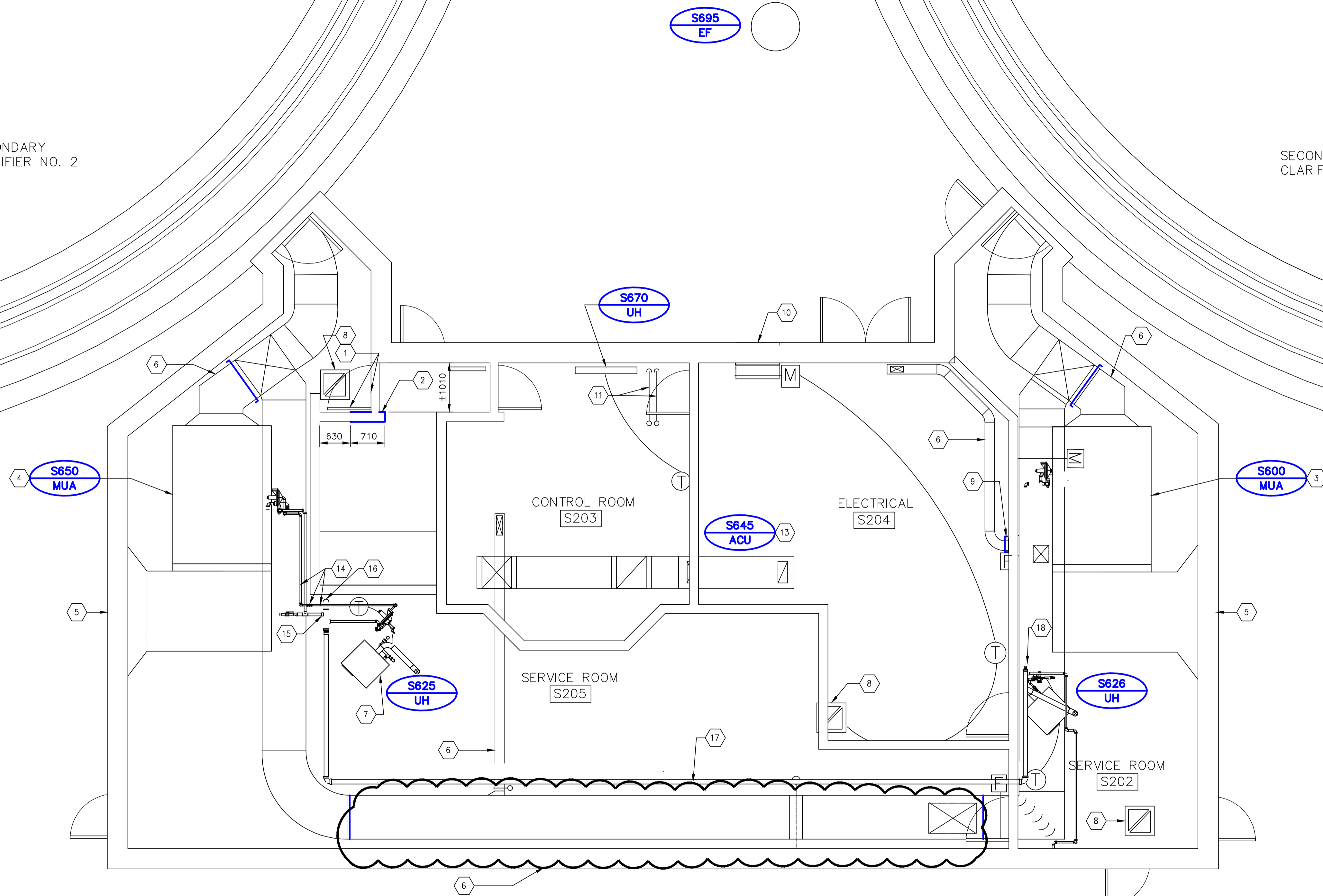


SECONDARY CLARIFIER NO. 2

SECONDARY CLARIFIER NO. 1



### KEY PLAN

#### KEY NOTES

- 1 REMOVE EXISTING WALL & DOOR TO ACCOMMODATE NEW STAIR ACCESS TO NEW PENTHOUSE. SEE SM2.4 FOR DETAILS.
- 2 REMOVE PART OF EXISTING WALL TO ACCOMMODATE NEW STAIR ACCESS TO NEW PENTHOUSE. SEE SM2.4 FOR DETAILS.
- 3 EXISTING DIRECT FIRED MAKE-UP AIR UNIT, S600, 8024 I/s TO BE REMOVED; APPROX. DIM'S 3150Lx2032Wx865H, WEIGHT 909 Kg. EXISTING SUPPORT STRUCTURE TO BE REMOVED. DISCONNECT AND REMOVE N.GAS LINE BACK TO MAIN GAS LINE, INCLUDING ISOLATION VALVE AND GAS REGULATOR. SEE SM2.7 FOR NEW GAS PIPING TIE-IN LOCATIONS.
- 4 EXISTING DIRECT FIRED MAKE-UP AIR UNIT, S650, 8024 I/s TO BE REMOVED; APPROX. DIM'S 3150Lx2032Wx865H, WEIGHT 909 Kg. EXISTING SUPPORT STRUCTURE TO BE REMOVED. DISCONNECT AND REMOVE N.GAS LINE BACK TO MAIN GAS LINE, INCLUDING ISOLATION VALVE AND GAS REGULATOR. SEE SM2.7 FOR NEW GAS PIPING TIE-IN LOCATIONS.
- 5 REMOVE EXISTING S600 & S650 OUTSIDE AIR DUCTWORK & 2800x1000 LOUVRE, FILL EXISTING WALL OPENING TO MATCH EXISTING WALL CONSTRUCTION & SEAL WATERTIGHT. SEE STRUCTURAL DRAWING LS2.1 FOR DETAILS.
- 6 REMOVE EXISTING S600 & S650 DISCHARGE DUCTWORK TO LIMITS SHOWN, SEE SM2.4 FOR DETAILS.
- 7 RELOCATE EXISTING UNIT HEATER, S625, & PROVIDE NEW 100# TYPE-B VENT. COORDINATE ROOF PATCHING WITH STRUCTURAL ROOF MODIFICATION REQUIREMENTS. SEE SM2.4 FOR NEW S625 LOCATION.
- 8 FILL EXISTING 320x320 ROOF OPENING, COORDINATE ROOF PATCHING WITH STRUCTURAL ROOF MODIFICATION REQUIREMENTS. SEE STRUCTURAL DRAWING LS2.1 FOR DETAILS.
- 9 PROVIDE END CAP FOR EXISTING DUCTWORK.
- 10 REMOVE EXISTING 500x500 OUTSIDE AIR LOUVRE, DAMPER & DUCTWORK, FILL EXISTING WALL OPENING TO MATCH EXISTING WALL CONSTRUCTION & SEAL WATERTIGHT. SEE STRUCTURAL DRAWING LS2.1 FOR DETAILS.
- 11 REMOVE & PROVIDE NEW REFRIGERANT SUCTION AND LIQUID LINES TO ACCOMMODATE NEW CONDENSING UNIT LOCATION. SEE SM2.4 & SM2.9 FOR DETAILS. COORDINATE ROOF PATCHING OF EXISTING REFRIGERANT PIPING ROOF PENETRATIONS WITH STRUCTURAL ROOF MODIFICATION REQUIREMENTS & SEAL WATERTIGHT.
- 12 EXISTING S600 & S650 DISCHARGE DUCTWORK TO REMAIN.
- 13 EXISTING HORIZONTAL AIR CLEANING UNIT MOUNTED AT HIGH LEVEL TO REMAIN.
- 14 REMOVE EXISTING VENT PIPING, COORDINATE EXISTING ROOF PATCHING WITH STRUCTURAL ROOF MODIFICATION REQUIREMENTS, SEAL WATER TIGHT.
- 15 REMOVE EXISTING MUA S650 38# N.GAS PIPING & CAP AT EXISTING TAKE-OFF.
- 16 REMOVE EXISTING 100# N.GAS ELBOW AND REPLACE WITH A TEE & TRANSITION TO ALLOW 50# GAS PIPING TO BE EXTENDED TO NEW PENTHOUSE LEVEL. PROVIDE CORED HOLE OPENING THROUGH CONC. ROOF SLAB TO ALLOW FOR PIPE PENETRATION.
- 17 EXISTING 75# N.GAS PIPING TO BE RE-ROUTED, SEE SM2.4 FOR DETAILS.
- 18 REMOVE EXISTING MUA S600 38# N.GAS PIPING & CAP AT EXISTING TAKE-OFF.

**A** AREA S – DISTRIBUTION BUILDING – PLAN  
SCALE 1:50

#### GENERAL NOTES

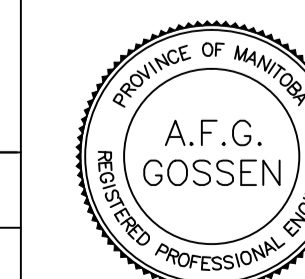
1. PERFORM ALL WORK IN ACCORDANCE WITH ALL APPLICABLE CODES, STANDARDS AND PROVINCIAL MECHANICAL ENGINEERING & INSPECTIONS BRANCH REQUIREMENTS.
2. COORDINATE WORKS WITH OTHER SUB-TRADES. REFER TO SPECIFIC DETAILS FOR CUTTING AND SEALING PENETRATIONS THROUGH OPENINGS & FIRE SEPARATIONS.
3. REFER TO TECHNICAL SPECIFICATIONS FOR EQUIPMENT AND MATERIAL SPECIFICATIONS AND INSTALLATION CONSTRUCTION AND PHASING REQUIREMENTS.
4. INSULATE DUCTWORK WHERE INDICATED AND SPECIFIED.
5. SUPPORT ALL DUCTWORK TO MEET CODE REQUIREMENTS & ESTABLISHED INDUSTRY TRADE PRACTICES, (SMACNA, ASHRAE).
6. INVESTIGATE SITE PRIOR TO CONSTRUCTION TO CONFIRM ALL DIMENSIONS AND INSTALLATION REQ'S.
7. PERFORM ALL CUTTING & PATCHING NECESSARY FOR ANY REQUIRED OPENINGS.
8. PROVIDE TAB TO ENSURE AIR DISTRIBUTION TO VOLUMES INDICATED.
9. NOT ALL EQUIPMENT/PIPING, ETC. IS SHOWN.



B.M. ELEV.	FIELD BOOK #:
POSTED TO LBIS	
DESIGNED BY IU	CHECKED BY AG
DRAWN BY IU	APPROVED BY
HOR. SCALE 1:50	RELEASED FOR CONSTRUCTION
VERTICAL 1:50	
00 ISSUED FOR TENDER 2010-12-21 AFG	
NO. REVISIONS	DATE BY
	DATE 2010-02-23

**ALLIANCE**  
Engineering Services Inc.

ENGINEER'S SEAL



CONSULTANT DRAWING NO.  
SM1.2



**THE CITY OF WINNIPEG**  
WATER AND WASTE DEPARTMENT

2010 HVAC REPLACEMENT  
AND ASSOCIATED WORKS  
WEWPCC

AREA S – SECONDARY CLARIFIERS 1 & 2  
DISTRIBUTION BUILDING – DEMOLITION

SHEET 1 OF 1

CITY DRAWING NUMBER

1-0103S-M0012-001