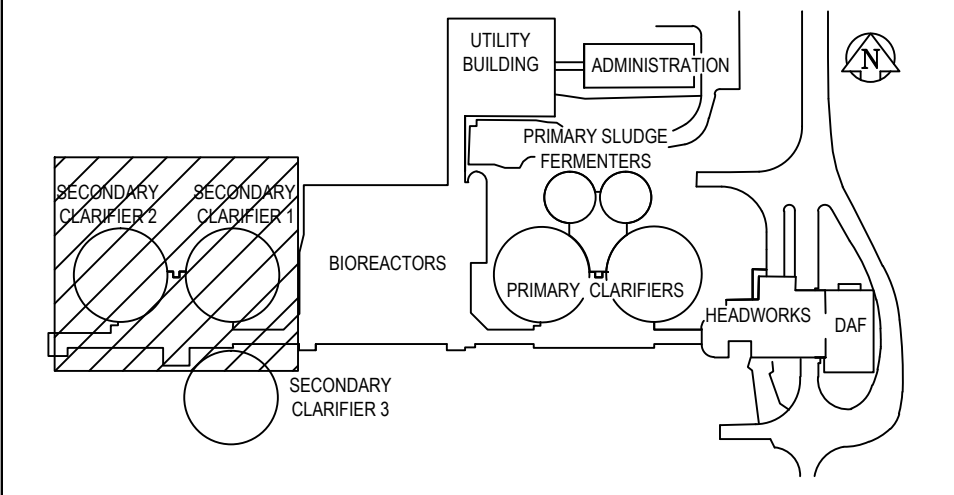


SECONDARY CLARIFIER NO. 2

SECONDARY CLARIFIER NO. 1

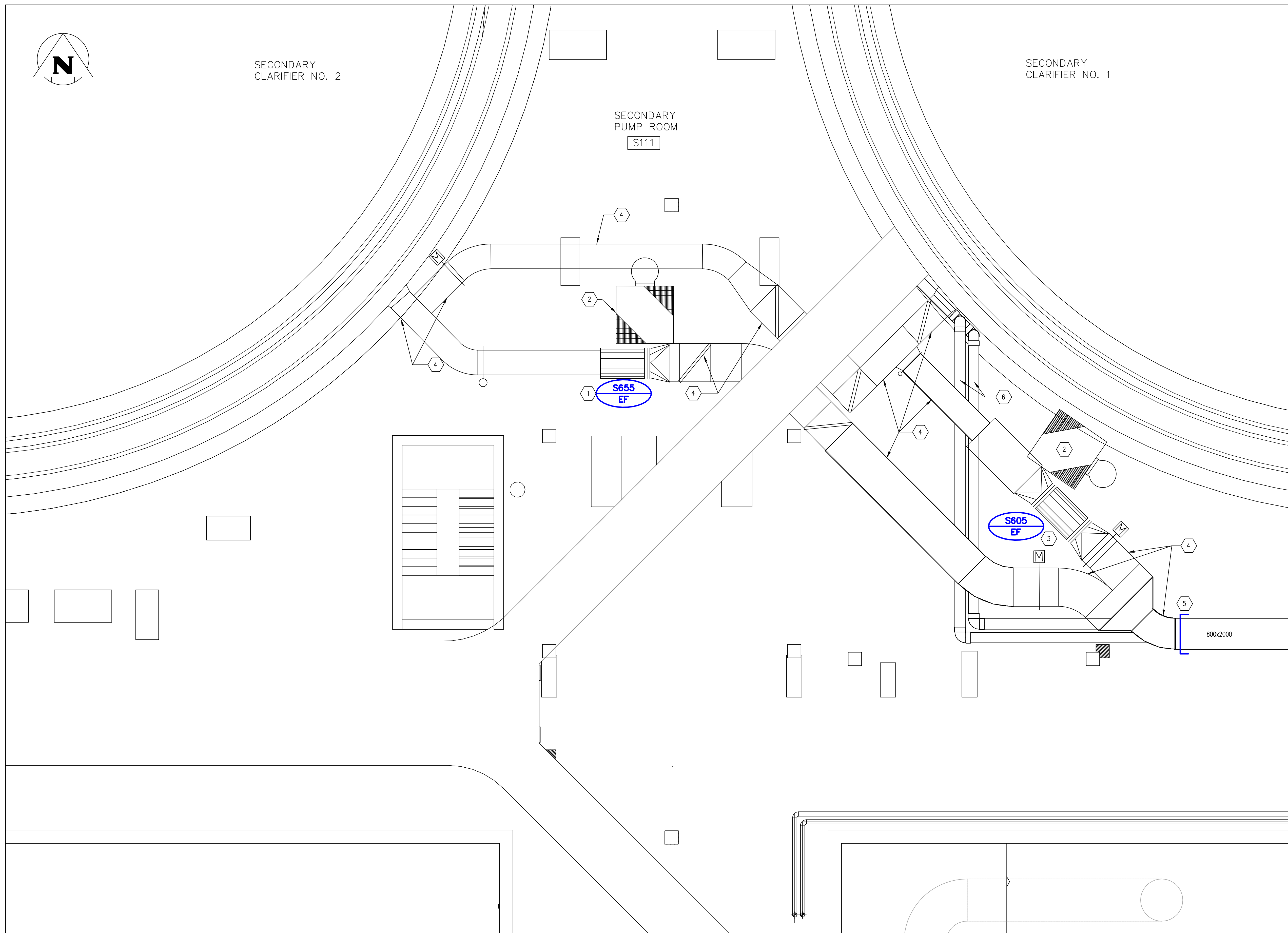
SECONDARY PUMP ROOM
S111



KEY PLAN

KEY NOTES

- 1 EXISTING EXHAUST FAN, S655, TO BE REMOVED, REMOVE EXISTING FAN SUPPORTS AND TRIM.
- 2 EXISTING EXHAUST FAN SERVICE PLATFORM TO BE REMOVED, SALVAGED AND RETURNED TO THE OWNER.
- 3 EXISTING EXHAUST FAN, S605, TO BE REMOVED, REMOVE EXISTING FAN SUPPORTS AND TRIM.
- 4 REMOVE EXISTING S605 & S655 RETURN DUCTWORK FROM FAN INLET UP TO EXISTING SECONDARY CLARIFIER CONNECTION. REMOVE EXISTING S605 & S655 DISCHARGE DUCTWORK FROM FAN DISCHARGE UP TO NEW 800x2000 DUCT CAP.
- 5 CAP EXISTING DUCT AT LOCATION SHOWN, FIELD CONFIRM DUCT SIZE.
- 6 EXISTING PIPING UNDER NEW DUCTWORK TO REMAIN.



A AREA S - PUMP ROOM - PLAN
SCALE 1:50

- GENERAL NOTES**
- PERFORM ALL WORK IN ACCORDANCE WITH ALL APPLICABLE CODES, STANDARDS AND PROVINCIAL MECHANICAL ENGINEERING & INSPECTIONS BRANCH REQUIREMENTS.
 - COORDINATE WORKS WITH OTHER SUB-TRADES. REFER TO SPECIFIC DETAILS FOR CUTTING AND SEALING PENETRATIONS THROUGH OPENINGS & FIRE SEPARATIONS.
 - REFER TO TECHNICAL SPECIFICATIONS FOR EQUIPMENT AND MATERIAL SPECIFICATIONS AND INSTALLATION CONSTRUCTION AND PHASING REQUIREMENTS.
 - INSULATE DUCTWORK WHERE INDICATED AND SPECIFIED.
 - SUPPORT ALL DUCTWORK TO MEET CODE REQUIREMENTS & ESTABLISHED INDUSTRY TRADE PRACTICES, (SMACNA, ASHRAE).
 - INVESTIGATE SITE PRIOR TO CONSTRUCTION TO CONFIRM ALL DIMENSIONS AND INSTALLATION REQ'S.
 - PERFORM ALL CUTTING & PATCHING NECESSARY FOR ANY REQUIRED OPENINGS.
 - PROVIDE TAB TO ENSURE AIR DISTRIBUTION TO VOLUMES INDICATED.
 - NOT ALL EQUIPMENT/PIPING, ETC. IS SHOWN.

APEGM
Certificate of Authorization
Alliance Engineering Services Inc.
No.2906 Date: _____

B.M. ELEV.	FIELD BOOK #:
POSTED TO LBIS	
00 ISSUED FOR TENDER	2010-12-21 AFG
NO. REVISIONS	DATE BY

ALLIANCE
Engineering Services Inc.

DESIGNED BY IU	CHECKED BY AG
DRAWN BY IU	APPROVED BY
HOR. SCALE 1:50	RELEASED FOR CONSTRUCTION
VERTICAL 1:50	
DATE 2010-02-23	DATE

ENGINEER'S SEAL
PROVINCE OF MANITOBA
REGISTERED PROFESSIONAL ENGINEER
A.F.G. GOSSEN

CONSULTANT DRAWING NO.
SM1.1

THE CITY OF WINNIPEG
WATER AND WASTE DEPARTMENT

2010 HVAC REPLACEMENT AND ASSOCIATED WORKS
WEWPCC
AREA S - SECONDARY CLARIFIERS 1 & 2
PUMP ROOM - DEMOLITION PLAN

SHEET 1 OF 1
CITY DRAWING NUMBER
1-0103S-M0011-001