

KEY PLAN

KEY NOTES

- 1 PROVIDE NEW WALLS & DOOR TO ACCOMMODATE NEW MUA INTAKE PLENUM TO DIMENSIONS SHOWN. SEE DRAWING PS2.1 FOR DETAILS.
- 2 PROVIDE NEW WALL PENETRATION TO ACCOMMODATE NEW LOUVER INTAKE, SEE PM2.5 FOR DETAILS.
- 3 PROVIDE WALL 1930x 1825 ROUGH OPENING IN NEW WALL SIZED TO ACCOMMODATE 1830x1725 MUA INTAKE DUCT C/W INSULATION AS SPECIFIED, SEE PM2.5 FOR DETAILS.
- 4 NEW 915x915 MUA-P600 & MUA-P650 SUPPLY DUCTWORK, CONNECT NEW STAINLESS STEEL DUCT TO EXISTING 915x915 STAINLESS STEEL DUCT BEFORE SECONDARY CLARIFIER WALL OPENING, EXISTING FIRE DAMPER AT WALL PENETRATION TO REMAIN.
- 5 PROVIDE 305x255 SUPPLY BOOT COMPLETE WITH BALANCING DAMPER AND STAINLESS STEEL EXPANDED METAL SCREEN.
- 6 PROVIDE NEW MAKE-UP AIR UNIT, P600, SUPPORT UNIT USING FACTORY SUPPLIED BASE MOUNTED ON NEW CONCRETE HKP, PAD TO DIMENSIONS SHOWN, SEE STR. DRAWING LS.2.2 DETAIL 1 FOR HKP DETAIL. SEE SPECIFICATIONS AND MANUFACTURE INSTALLATION REQUIREMENTS FOR DETAILS.
- 7 PROVIDE NEW MAKE-UP AIR UNIT, P650, SUPPORT UNIT OFF USING FACTORY SUPPLIED BASE MOUNTED ON NEW CONCRETE HKP, PAD TO DIMENSIONS SHOWN, SEE STR. DWG. LS.2.2 DETAIL 1 FOR HKP DETAIL. SEE SPECIFICATIONS AND MANUFACTURE INSTALLATION REQUIREMENTS FOR DETAILS.
- 8 PROVIDE FLOOR DRAIN. SEE SPECIFICATIONS; INSTALL TO MANUFACTURER'S RECOMMENDATIONS, TRAP DRAIN WITHIN PUMP ROOM LEVEL. DRAIN TO EXISTING DRAIN PIPING HIGH IN PUMP ROOM LEVEL. SEE PM2.1. PROVIDE CORED HOLE OPENING THROUGH CONCRETE SLAB TO ACCOMMODATE SANITARY PIPING PENETRATION.
- 9 POUR 205mm CURB & NOTCH OUT AT LOCALIZED AREA OF FUTURE GATE OPERATOR TO ACCOMMODATE FUTURE INSTALLATION, COORDINATE WITH STRUCTURAL.
- 10 PROVIDE 100 HIGH RAISED CURB TO MOUNT EXHAUST FLOOR GRILLE, REFER TO STRUCTURAL FOR DETAILS. SEE STR. DRAWINGS FOR CURBED FLOOR PENETRATION DETAIL.
- 11 PROVIDE TIE-IN C/W ISOLATION VALVE TO EXISTING N.GAS PIPING & NEW 35 KPa (5 PSIG) 38# N.GAS PIPING TO SUPPLY NEW MUA'S P-600 & P650. PROVIDE DROP WITH NEW REGULATOR, MANUAL SHUTOFF VALVE, DRIP LEG & UNION NEAR GAS CONNECTION SEE SPECIFICATIONS FOR DETAILS. PROVIDE TRANSITION AT UNIT GAS CONNECTION IF REQUIRED.
- 12 PROVIDE NEW VENT PIPING FROM THE NEW GAS REGULATOR, PROVIDE NEW ROOF PENETRATION TO ACCOMMODATE VENT PIPING, SUPPORT PIPING AS SPECIFIED.
- 13 REMOVE EXISTING CAP & TIE-IN TO EXISTING N.GAS PIPING DOWNSTREAM OF EXISTING VALVE, PROVIDE TRANSITION AT TIE-IN & PROVIDE NEW 35 KPa (5 PSIG) PIPING TO SUPPLY RELOCATED UH P665. PROVIDE VERTICAL OFFSET TO AVOID INTERFERENCE WITH NEW MUA SUPPLY DUCTWORK. PROVIDE DROP & NEW GAS REGULATOR, MANUAL SHUTOFF VALVE, DRIP LEG & UNION NEAR GAS CONNECTION. PROVIDE TRANSITION AT UNIT GAS CONNECTION IF REQUIRED. PROVIDE NEW THERMOSTAT WIRE TO ACCOMMODATE NEW UNIT LOCATION IF REQUIRED, FIELD CONFIRM.
- 14 PROVIDE NEW P665 VENT PIPING FROM THE GAS REGULATOR, PROVIDE NEW ROOF OPENING TO ACCOMMODATE NEW VENT PIPING, SUPPORT PIPING AS SPECIFIED.
- 15 PROVIDE NEW ROOF PENETRATION TO ACCOMMODATE NEW 100# P665 UH TYPE-B VENT, SEAL ROOF PENETRATION WATER TIGHT.
- 16 PROVIDE PENETRATION THROUGH INTAKE PLENUM NORTH WALL TO ACCOMMODATE 100# COMBUSTION AIR DUCT P-TRAP ARRANGEMENT, INSULATED WITH 40mm DUCT WRAP FOR P665, COORDINATE PENETRATION WITH STRUCTURAL.
- 17 ALL DIMENSIONS SHOWN AND MECHANICAL EQUIPMENT AND DUCTWORK LOCATIONS, SHALL BE CHECKED AND CO-ORDINATED WITH STRUCTURAL DRAWINGS

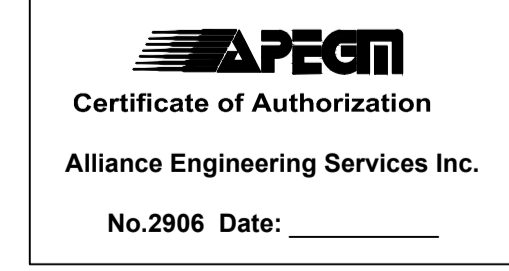
A AREA P - DISTRIBUTION BUILDING - PLAN
SCALE 1:50

PRIMARY AREA TIP SCHEDULE

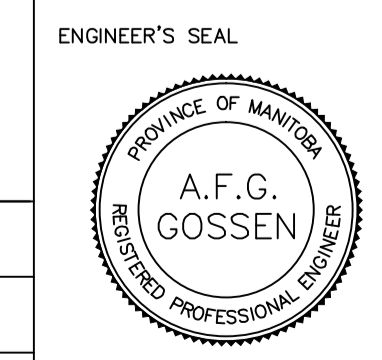
TIP NO.	DESCRIPTION.	NOTES
PTIP5	TIE INTO EXISTING EXISTING 915x915 MUA DUCT	CONTRACTOR TO FIELD VERIFY EXISTING DUCT SIZE
STIP6	TIE INTO EXISTING 915x915 MUA DUCT	CONTRACTOR TO FIELD VERIFY EXISTING DUCT SIZE

GENERAL NOTES

1. PERFORM ALL WORK IN ACCORDANCE WITH ALL APPLICABLE CODES, STANDARDS AND PROVINCIAL MECHANICAL ENGINEERING & INSPECTIONS BRANCH REQUIREMENTS.
2. COORDINATE WORKS WITH OTHER SUB-TRADES. REFER TO SPECIFIC DETAILS FOR CUTTING AND SEALING PENETRATIONS THROUGH OPENINGS & FIRE SEPARATIONS.
3. REFER TO TECHNICAL SPECIFICATIONS FOR EQUIPMENT AND MATERIAL SPECIFICATIONS AND INSTALLATION CONSTRUCTION AND PHASING REQUIREMENTS.
4. INSULATE DUCTWORK WHERE INDICATED AND SPECIFIED.
5. SUPPORT ALL DUCTWORK TO MEET CODE REQUIREMENTS & ESTABLISHED INDUSTRY TRADE PRACTICES, (SMACNA, ASHRAE).
6. INVESTIGATE SITE PRIOR TO CONSTRUCTION TO CONFIRM ALL DIMENSIONS AND INSTALLATION REQ'S.
7. PERFORM ALL CUTTING & PATCHING NECESSARY FOR ANY REQUIRED OPENINGS.
8. PROVIDE TAB TO ENSURE AIR DISTRIBUTION TO VOLUMES INDICATED.
9. NOT ALL EQUIPMENT/PIPING, ETC. IS SHOWN.



B.M. ELEV.	FIELD BOOK #:
POSTED TO LBS	
DESIGNED BY	IU
CHECKED BY	AG
DRAWN BY	IU
APPROVED BY	
HOR. SCALE	1:50
VERTICAL	1:50
00 ISSUED FOR TENDER	2010-12-21 AFG
NO. REVISIONS	DATE BY
	DATE 2010-02-23



THE CITY OF WINNIPEG
WATER AND WASTE DEPARTMENT

2010 HVAC REPLACEMENT AND ASSOCIATED WORKS
WEWPCC

AREA P - PRIMARY CLARIFIERS 1 & 2
NEW DISTRIBUTION BUILDING PLAN

SHEET 1 of 1
CITY DRAWING NUMBER
1-0103P-M0009-001

CONSULTANT DRAWING NO.
PM2.4