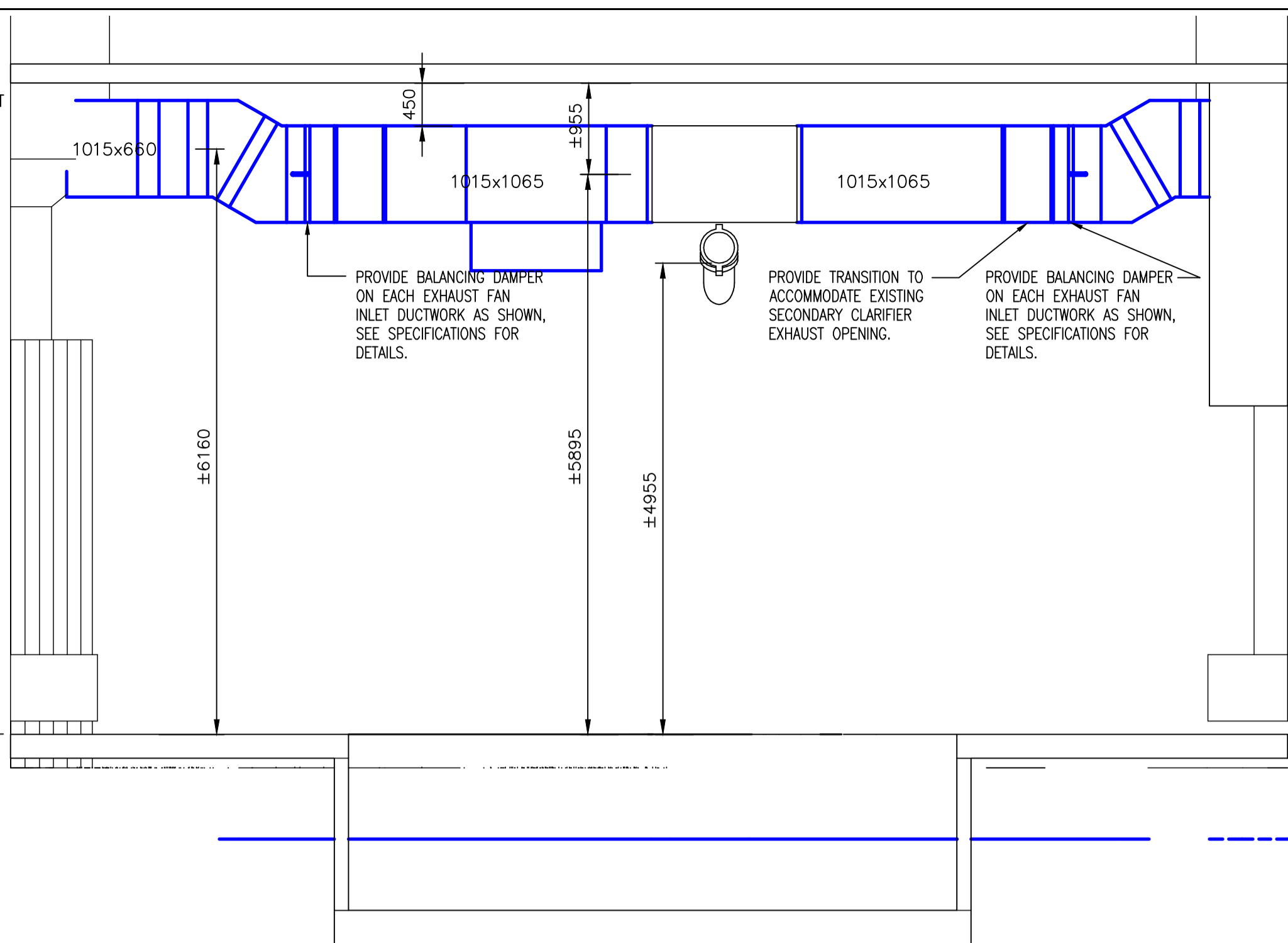
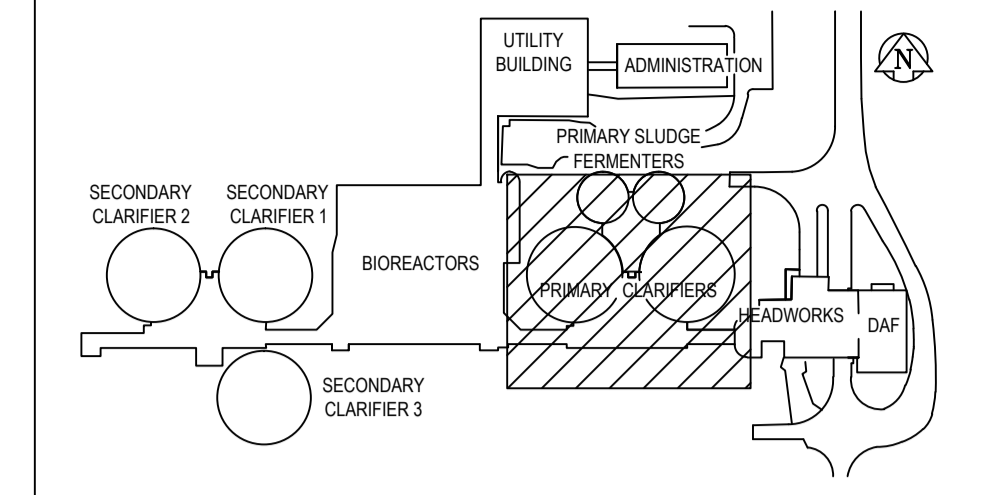


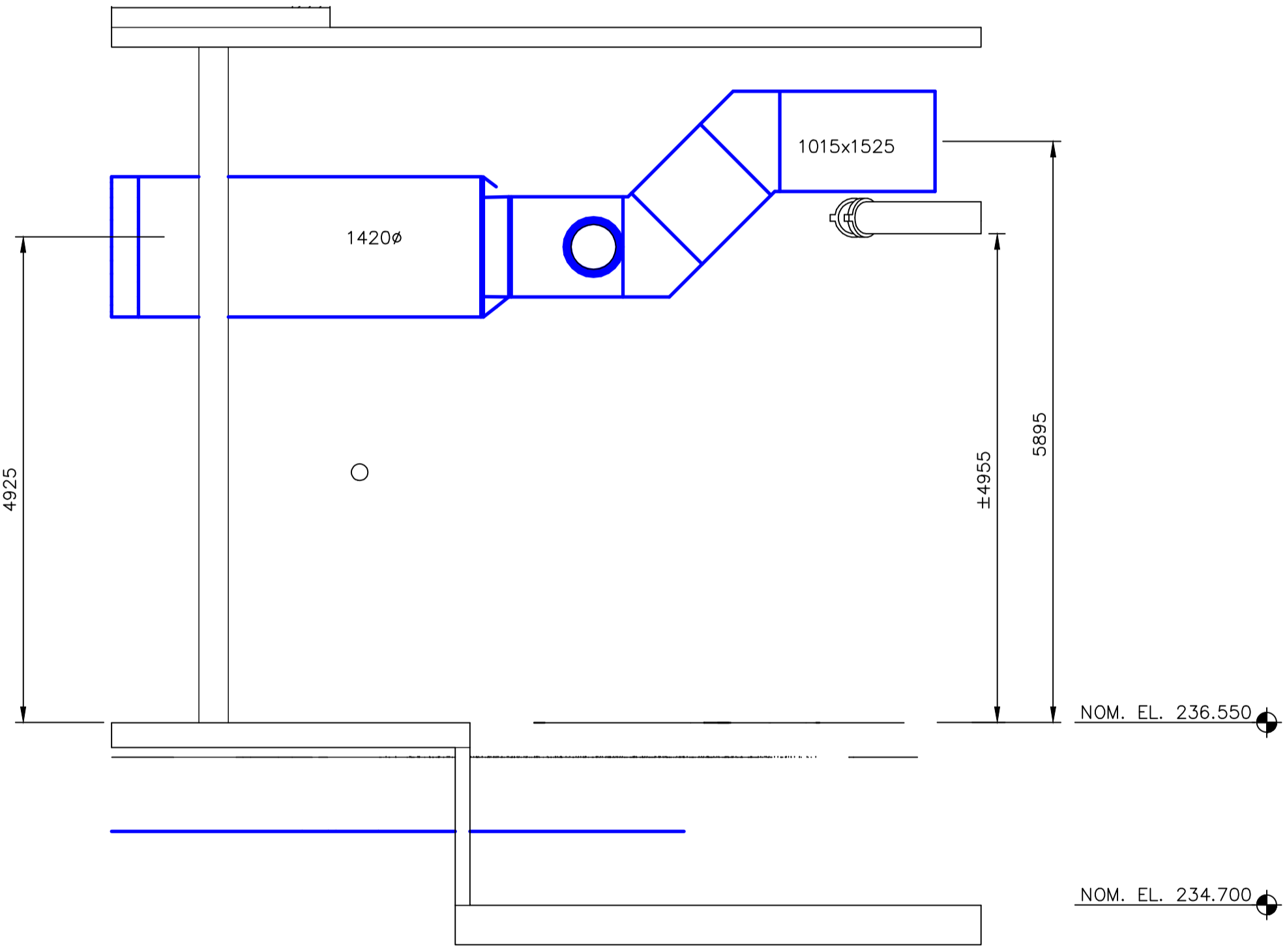
**A SECTION**  
PM2.1  
SCALE 1:50



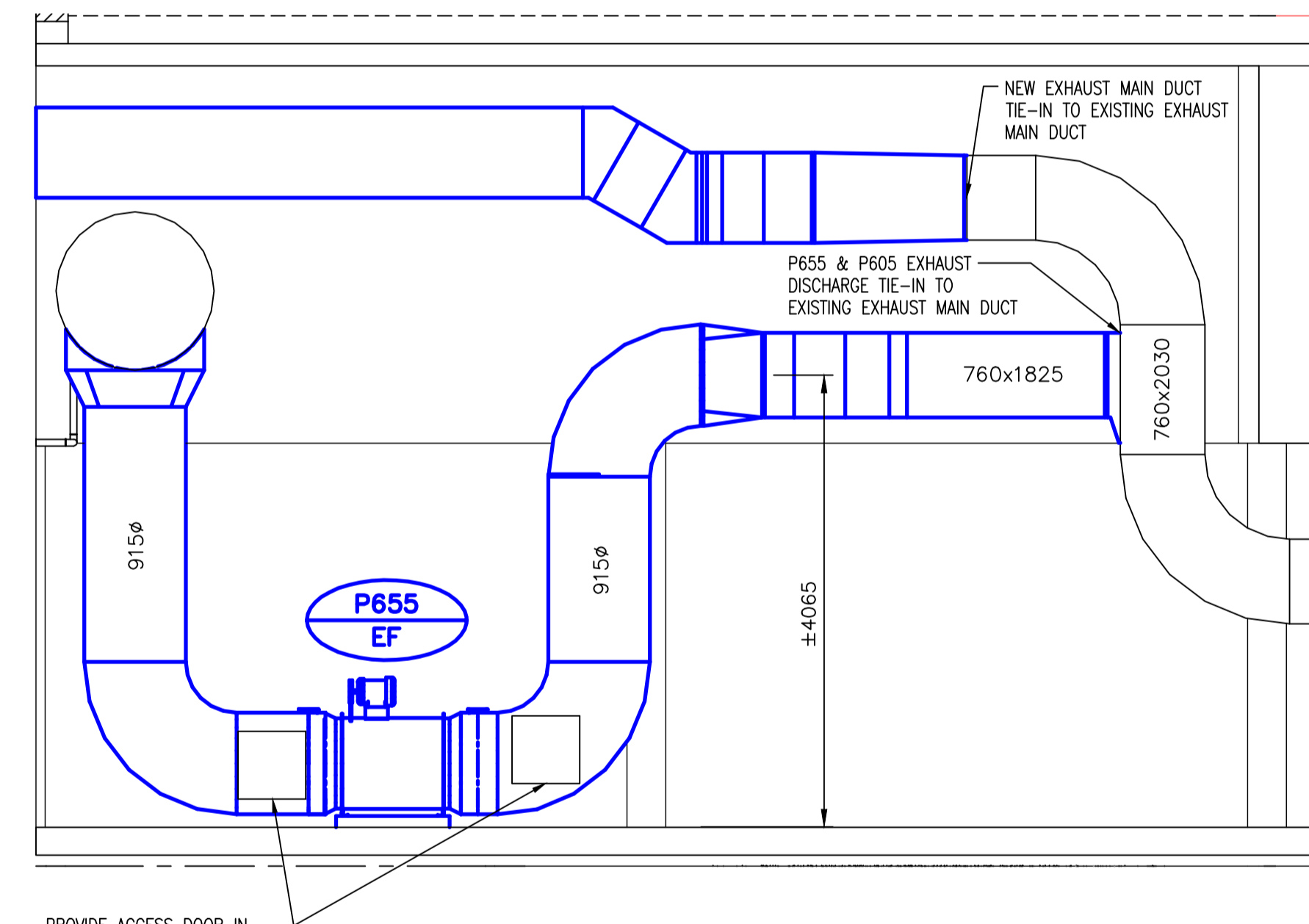
**C SECTION**  
PM2.1  
SCALE 1:50



KEY PLAN



**B SECTION**  
PM2.1  
SCALE 1:50



**D SECTION**  
PM2.1  
SCALE 1:50

- GENERAL NOTES**
- PERFORM ALL WORK IN ACCORDANCE WITH ALL APPLICABLE CODES, STANDARDS AND PROVINCIAL MECHANICAL ENGINEERING & INSPECTIONS BRANCH REQUIREMENTS.
  - COORDINATE WORKS WITH OTHER SUB-TRADES. REFER TO SPECIFIC DETAILS FOR CUTTING AND SEALING PENETRATIONS THROUGH OPENINGS & FIRE SEPARATIONS.
  - REFER TO TECHNICAL SPECIFICATIONS FOR EQUIPMENT AND MATERIAL SPECIFICATIONS AND INSTALLATION CONSTRUCTION AND PHASING REQUIREMENTS.
  - INSULATE DUCTWORK WHERE INDICATED AND SPECIFIED.
  - SUPPORT ALL DUCTWORK TO MEET CODE REQUIREMENTS & ESTABLISHED INDUSTRY TRADE PRACTICES, (SMACNA, ASHRAE).
  - INVESTIGATE SITE PRIOR TO CONSTRUCTION TO CONFIRM ALL DIMENSIONS AND INSTALLATION REQ'S.
  - PERFORM ALL CUTTING & PATCHING NECESSARY FOR ANY REQUIRED OPENINGS.
  - PROVIDE TAB TO ENSURE AIR DISTRIBUTION TO VOLUMES INDICATED.
  - NOT ALL EQUIPMENT/PIPING, ETC. IS SHOWN.

<b>APEGM</b> Certificate of Authorization Alliance Engineering Services Inc. No.2906 Date: _____		B.M. ELEV. POSTED TO LBIS	FIELD BOOK #:
DESIGNED BY IU	CHECKED BY AG	DATE	
DRAWN BY IU	APPROVED BY	DATE	
HOR. SCALE 1:50	RELEASED FOR CONSTRUCTION	DATE	
VERTICAL 1:50	DATE	DATE	
00 ISSUED FOR TENDER	2010-12-21	AFG	
NO. REVISIONS	DATE	BY	DATE
			2010-02-23

**ALLIANCE**  
Engineering Services Inc.

ENGINEER'S SEAL

PROVINCE OF MANITOBA  
REGISTERED PROFESSIONAL ENGINEER  
A.F.G. GOSSEN

CONSULTANT DRAWING NO.  
PM2.2

**THE CITY OF WINNIPEG**  
WATER AND WASTE DEPARTMENT

2010 HVAC REPLACEMENT AND ASSOCIATED WORKS  
WEWPCC  
AREA P – PRIMARY CLARIFIERS 1 & 2  
NEW PUMP ROOM ELEVATION

SHEET 1 OF 1  
CITY DRAWING NUMBER  
1-0103P-M0007-001