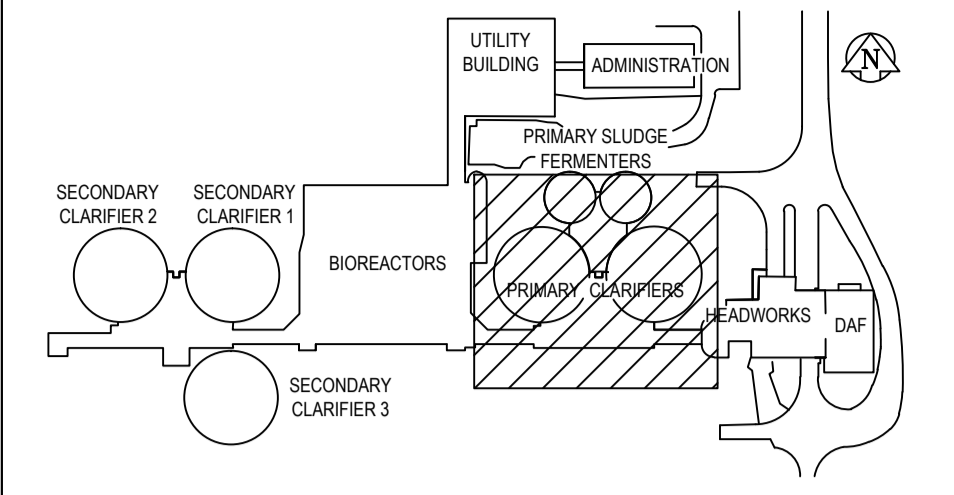


PRIMARY CLARIFIER NO.2

PRIMARY PUMP ROOM  
P111

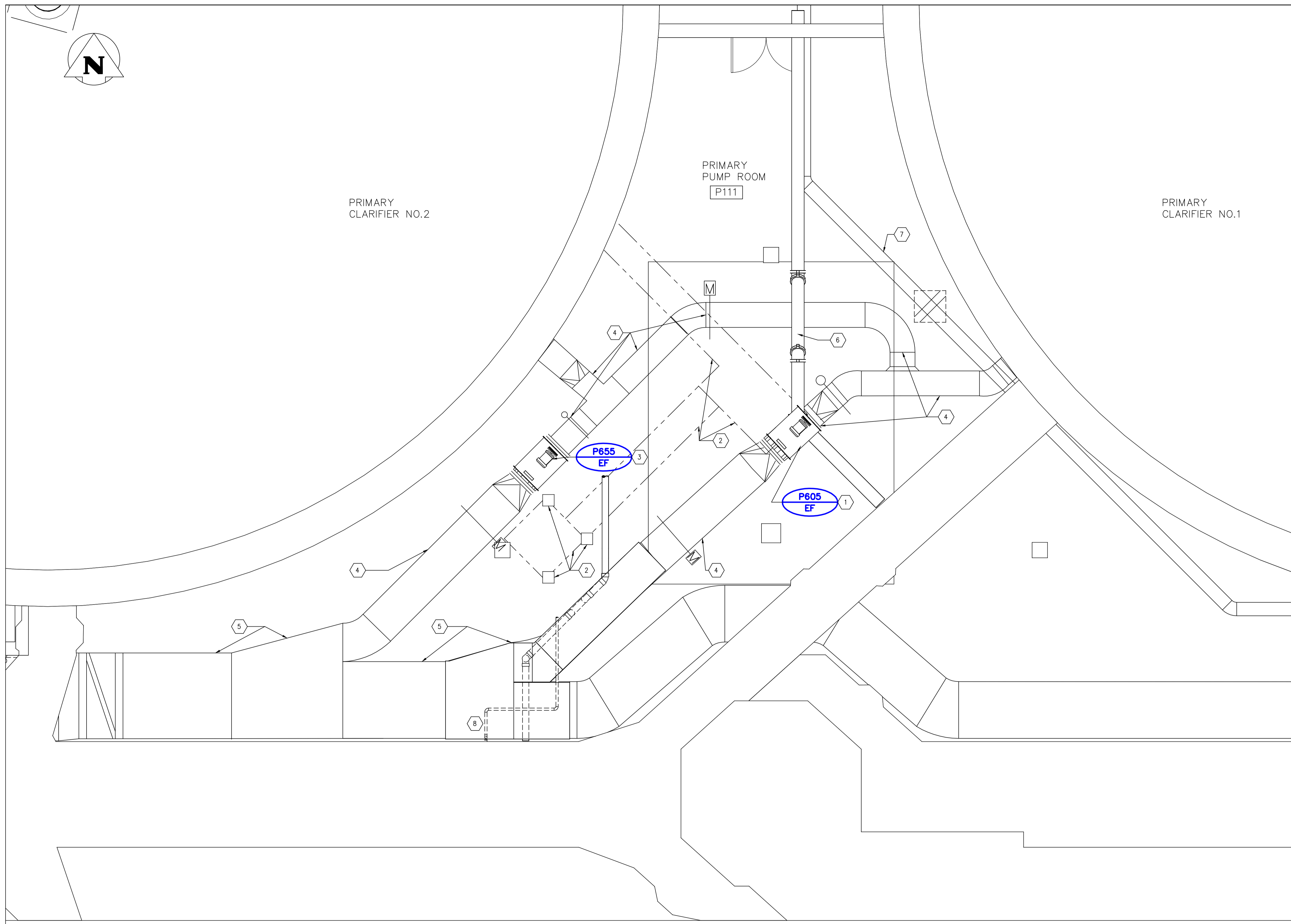
PRIMARY CLARIFIER NO.1



KEY PLAN

KEY NOTES

- 1 EXISTING EXHAUST FAN, P655, TO BE REMOVED, REMOVE EXISTING FAN SUPPORTS AND TRIM.
- 2 EXISTING EXHAUST FAN SERVICE PLATFORM & ALL RELATED SUPPORT INCLUDING SUPPORT COLUMNS TO BE REMOVED, SALVAGED AND RETURNED TO THE OWNER.
- 3 EXISTING EXHAUST FAN, P605, TO BE REMOVED, REMOVE EXISTING FAN SUPPORTS AND TRIM.
- 4 REMOVE EXISTING P605 & P655 RETURN DUCTWORK FROM FAN INLET UP TO EXISTING SECONDARY CLARIFIER CONNECTION. REMOVE EXISTING P605 & P655 SUPPLY DUCTWORK FROM FAN DISCHARGE UP TO EXISTING WYE CONNECTION, SEE PM2.1 FOR DETAILS..
- 5 REMOVE EXISTING GENERAL EXHAUST DUCTWORK FROM UPSTREAM WYE TO NEW 1525x1015 DUCT TIE-IN DOWNSTREAM OF SECOND WYE, SEE PM2.1 FOR DETAILS.
- 6 EXISTING FERMENTER SUPERNATANT PIPING UNDER NEW DUCTWORK TO REMAIN.
- 7 EXISTING FOUL AIR DUCTWORK ALONG CLARIFIER WALL TO REMAIN.
- 8 EXISTING SUMP PUMP DISCHARGE TO BE RE-ROUTED TO AVOID INTERFERENCE WITH NEW DUCTWORK, SEE PM2.1 FOR DETAILS.



GENERAL NOTES

- 1. PERFORM ALL WORK IN ACCORDANCE WITH ALL APPLICABLE CODES, STANDARDS AND PROVINCIAL MECHANICAL ENGINEERING & INSPECTIONS BRANCH REQUIREMENTS.
- 2. COORDINATE WORKS WITH OTHER SUB-TRADES. REFER TO SPECIFIC DETAILS FOR CUTTING AND SEALING PENETRATIONS THROUGH OPENINGS & FIRE SEPARATIONS.
- 3. REFER TO TECHNICAL SPECIFICATIONS FOR EQUIPMENT AND MATERIAL SPECIFICATIONS AND INSTALLATION CONSTRUCTION AND PHASING REQUIREMENTS.
- 4. INSULATE DUCTWORK WHERE INDICATED AND SPECIFIED.
- 5. SUPPORT ALL DUCTWORK TO MEET CODE REQUIREMENTS & ESTABLISHED INDUSTRY TRADE PRACTICES, (SMACNA, ASHRAE).
- 6. INVESTIGATE SITE PRIOR TO CONSTRUCTION TO CONFIRM ALL DIMENSIONS AND INSTALLATION REQ'S.
- 7. PERFORM ALL CUTTING & PATCHING NECESSARY FOR ANY REQUIRED OPENINGS.
- 8. PROVIDE TAB TO ENSURE AIR DISTRIBUTION TO VOLUMES INDICATED.
- 9. NOT ALL EQUIPMENT/PIPING, ETC. IS SHOWN.

A AREA P - PUMP ROOM - PLAN  
SCALE 1:50



B.M. ELEV.	FIELD BOOK #:
POSTED TO LBIS	
00 ISSUED FOR TENDER	2010-12-21 AFG
NO. REVISIONS	DATE BY

**ALLIANCE**  
Engineering Services Inc.

DESIGNED BY IU	CHECKED BY AG
DRAWN BY IU	APPROVED BY
HOR. SCALE 1:50	RELEASED FOR CONSTRUCTION
VERTICAL 1:50	DATE 2010-02-23

ENGINEER'S SEAL

CONSULTANT DRAWING NO. PM1.1

**THE CITY OF WINNIPEG**  
WATER AND WASTE DEPARTMENT

2010 HVAC REPLACEMENT AND ASSOCIATED WORKS  
WEWPCC  
AREA P - PRIMARY CLARIFIERS 1 & 2  
PUMP ROOM - DEMOLITION PLAN

SHEET 1 OF 1  
CITY DRAWING NUMBER 1-0103P-M0004-001