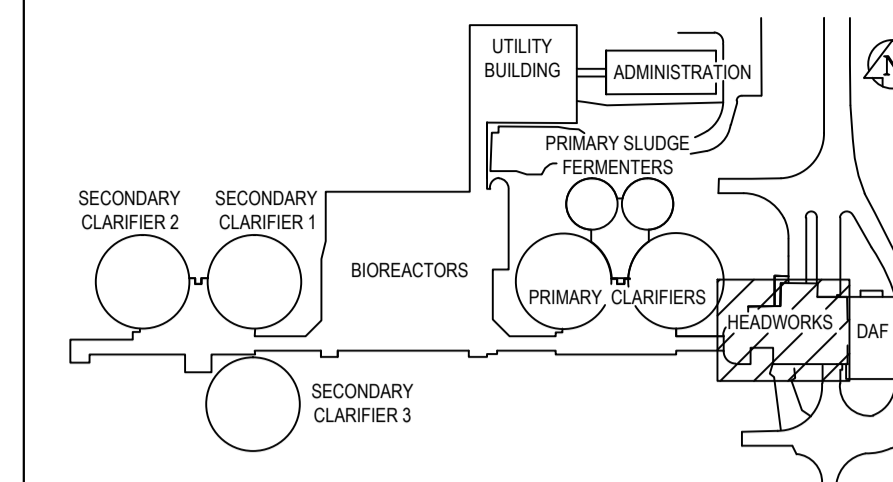


EA-3  
750x450  
130/260

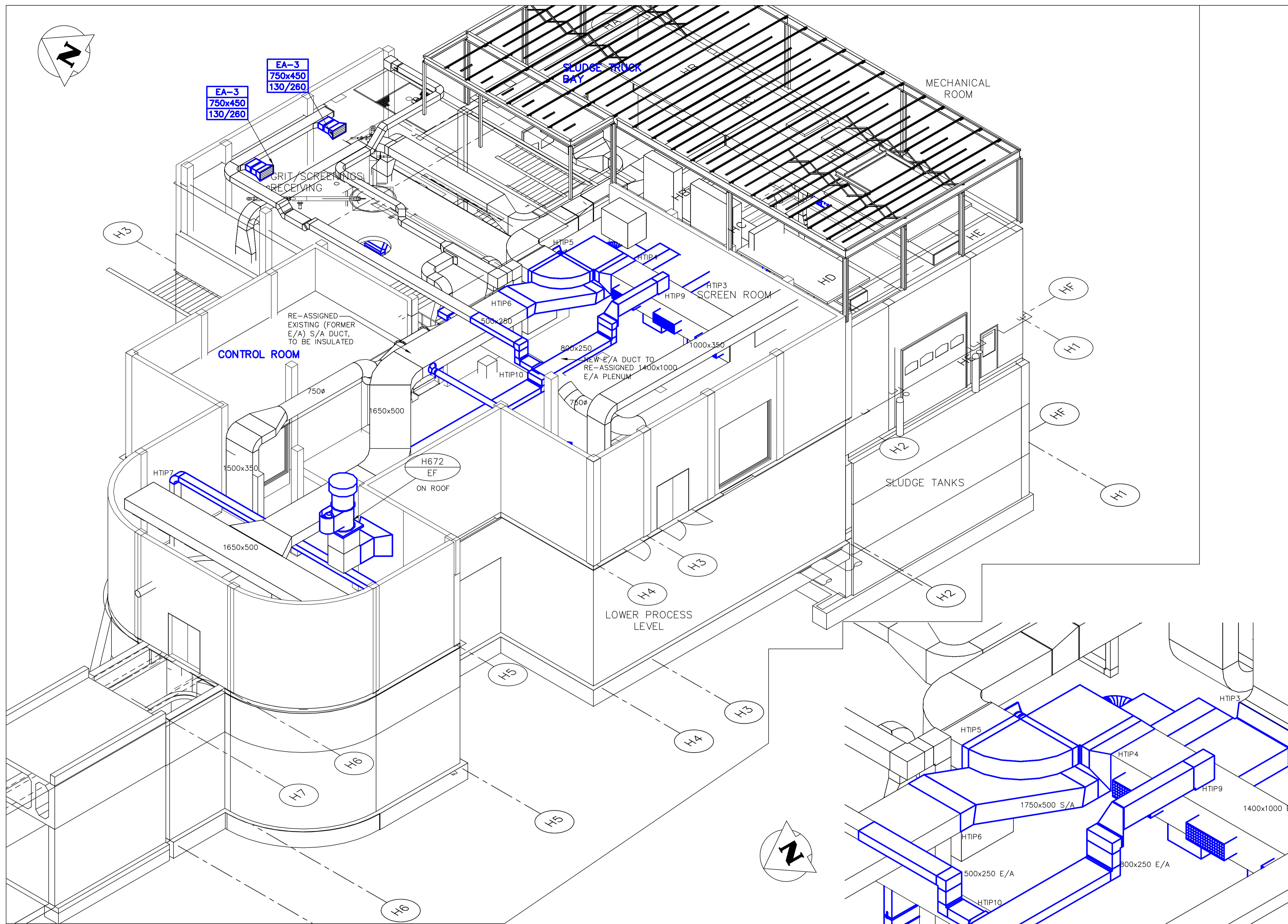
EA-3  
750x450  
130/260

SLUDGE TRUCK BAY

MECHANICAL ROOM



KEY PLAN



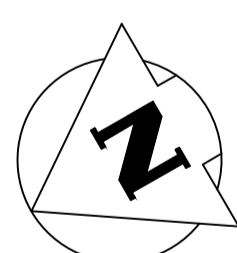
CONTROL ROOM

RE-ASSIGNED EXISTING (FORMER E/A) S/A DUCT, TO BE INSULATED

NEW E/A DUCT TO RE-ASSIGNED 1400x1000 E/A PLENUM

SLUDGE TANKS

LOWER PROCESS LEVEL



A - AREA H - UPPER PROCESS LEVEL - NEW CONDITIONS ISOMETRIC  
N.T.S.

B - AREA H - UPPER PROCESS LEVEL - NEW DUCTWORK TIP'S  
N.T.S.

GENERAL NOTES

- PERFORM ALL WORK IN ACCORDANCE WITH ALL APPLICABLE CODES, STANDARDS AND PROVINCIAL MECHANICAL ENGINEERING & INSPECTIONS BRANCH REQUIREMENTS.
- COORDINATE WORKS WITH OTHER SUB-TRADES. REFER TO SPECIFIC DETAILS FOR CUTTING AND SEALING PENETRATIONS THROUGH OPENINGS & FIRE SEPARATIONS.
- REFER TO TECHNICAL SPECIFICATIONS FOR EQUIPMENT AND MATERIAL SPECIFICATIONS AND INSTALLATION CONSTRUCTION AND PHASING REQUIREMENTS.
- INSULATE DUCTWORK WHERE INDICATED AND SPECIFIED.
- SUPPORT ALL DUCTWORK TO MEET CODE REQUIREMENTS & ESTABLISHED INDUSTRY TRADE PRACTICES, (SMACNA, ASHRAE).
- INVESTIGATE SITE PRIOR TO CONSTRUCTION TO CONFIRM ALL DIMENSIONS AND INSTALLATION REQ'S.
- PERFORM ALL CUTTING & PATCHING NECESSARY FOR ANY REQUIRED OPENINGS.
- PROVIDE TAB TO ENSURE AIR DISTRIBUTION TO VOLUMES INDICATED.
- NOT ALL EQUIPMENT/PIPING, ETC. IS SHOWN.

**APEGN**  
Certificate of Authorization  
Alliance Engineering Services Inc.  
No.2906 Date: \_\_\_\_\_

B.M. ELEV.	FIELD BOOK #:
POSTED TO LBIS	
00 ISSUED FOR TENDER	2010-12-21 AFG
NO. REVISIONS	DATE BY

**ALLIANCE**  
Engineering Services Inc.

DESIGNED BY JC/AS	CHECKED BY AFG
DRAWN BY AS	APPROVED BY
HOR. SCALE NTS	RELEASED FOR CONSTRUCTION
VERTICAL NTS	DATE 2010-06-23

ENGINEER'S SEAL  
PROVINCE OF MANITOBA  
A.F.G. GOSSEN  
REGISTERED PROFESSIONAL ENGINEER  
CONSULTANT DRAWING NO. HM2.14

**THE CITY OF WINNIPEG**  
WATER AND WASTE DEPARTMENT  
2010 HVAC REPLACEMENT AND ASSOCIATED WORKS  
WEWPCC  
AREA H - HEADWORKS  
UPPER PROCESS LEVEL - NEW CONDITIONS ISOMETRIC

SHEET 1 OF 1  
CITY DRAWING NUMBER  
1-0103G-M0030-001