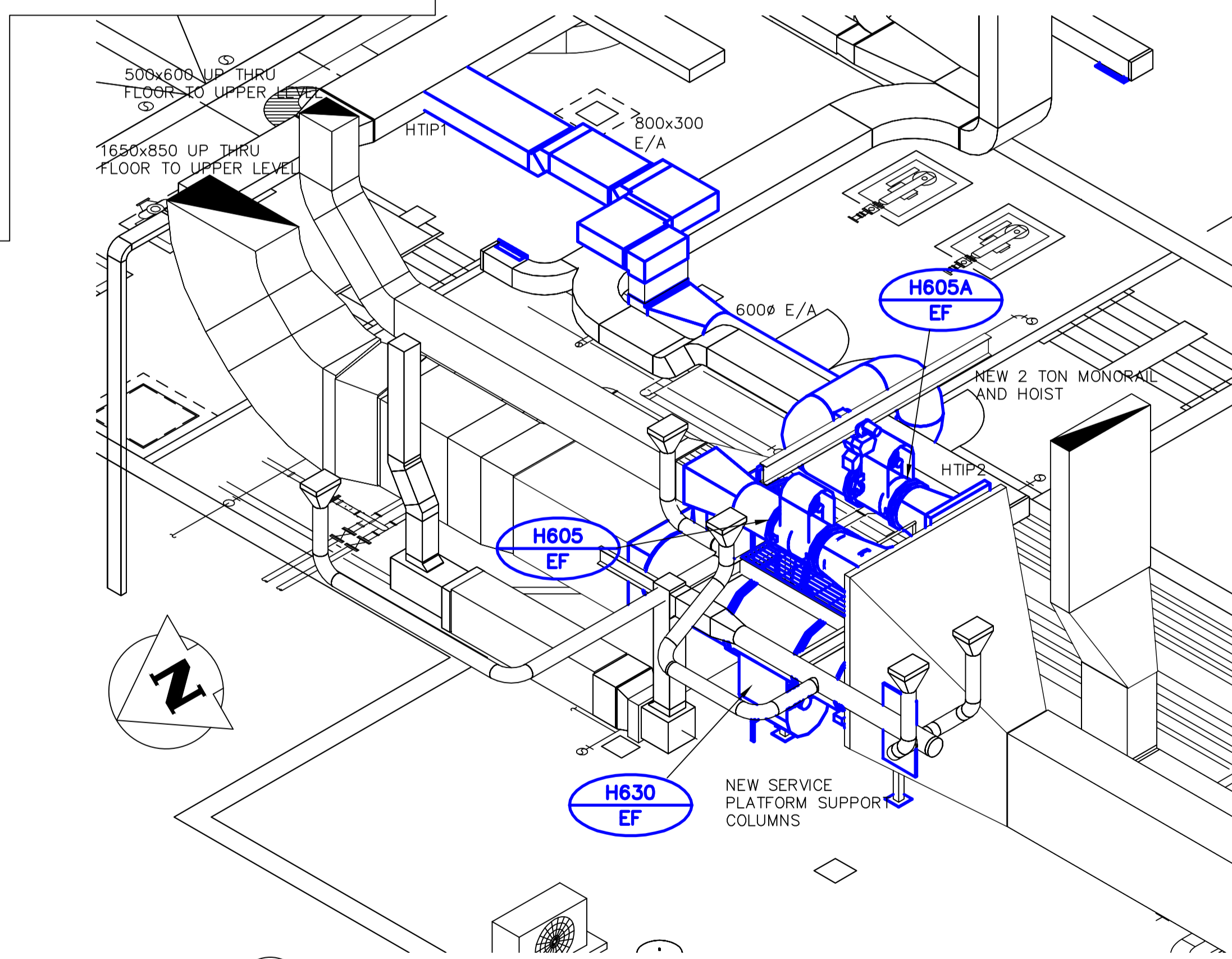
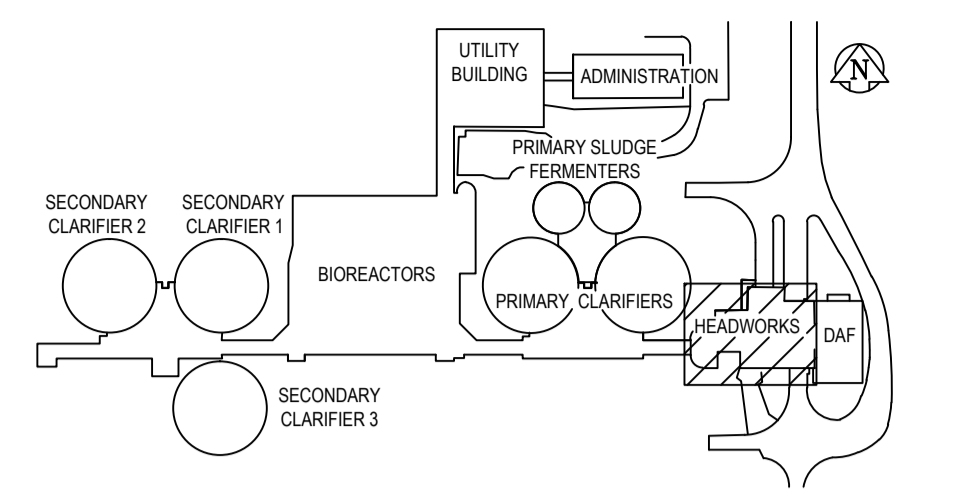


**A** AREA H - LOWER PROCESS LEVEL - NEW CONDITIONS NW ISOMETRIC  
N.T.S.



**B** AREA H - LOWER PROCESS LEVEL - NEW CONDITIONS SE ISOMETRIC  
N.T.S.



KEY PLAN

- GENERAL NOTES**
- PERFORM ALL WORK IN ACCORDANCE WITH ALL APPLICABLE CODES, STANDARDS AND PROVINCIAL MECHANICAL ENGINEERING & INSPECTIONS BRANCH REQUIREMENTS.
  - COORDINATE WORKS WITH OTHER SUB-TRADES. REFER TO SPECIFIC DETAILS FOR CUTTING AND SEALING PENETRATIONS THROUGH OPENINGS & FIRE SEPARATIONS.
  - REFER TO TECHNICAL SPECIFICATIONS FOR EQUIPMENT AND MATERIAL SPECIFICATIONS AND INSTALLATION CONSTRUCTION AND PHASING REQUIREMENTS.
  - INSULATE DUCTWORK WHERE INDICATED AND SPECIFIED.
  - SUPPORT ALL DUCTWORK TO MEET CODE REQUIREMENTS & ESTABLISHED INDUSTRY TRADE PRACTICES, (SMACNA, ASHRAE).
  - INVESTIGATE SITE PRIOR TO CONSTRUCTION TO CONFIRM ALL DIMENSIONS AND INSTALLATION REQ'S.
  - PERFORM ALL CUTTING & PATCHING NECESSARY FOR ANY REQUIRED OPENINGS.
  - PROVIDE TAB TO ENSURE AIR DISTRIBUTION TO VOLUMES INDICATED.
  - NOT ALL EQUIPMENT/PIPING, ETC. IS SHOWN.

**APEGA**  
Certificate of Authorization  
Alliance Engineering Services Inc.  
No.2906 Date: \_\_\_\_\_

S.M. ELEV.	FIELD BOOK #:
POSTED TO LBIS	
00 ISSUED FOR TENDER	2010-12-21 AFG
NO. REVISIONS	DATE BY

**ALLIANCE**  
Engineering Services Inc.

DESIGNED BY JC/AS	CHECKED BY AFG
DRAWN BY AS	APPROVED BY
HOR. SCALE NTS	RELEASED FOR CONSTRUCTION
VERTICAL NTS	DATE 2010-06-23

ENGINEER'S SEAL  
PROVINCE OF MANITOBA  
A.F.G. GOSSEN  
REGISTERED PROFESSIONAL ENGINEER  
CONSULTANT DRAWING NO. HM2.13

**THE CITY OF WINNIPEG**  
WATER AND WASTE DEPARTMENT  
Winnipeg

2010 HVAC REPLACEMENT AND ASSOCIATED WORKS  
WEWPCC  
AREA H - HEADWORKS  
LOWER PROCESS LEVEL - NEW CONDITIONS ISOMETRICS

SHEET 1 OF 1  
CITY DRAWING NUMBER  
1-0103G-M0029-001