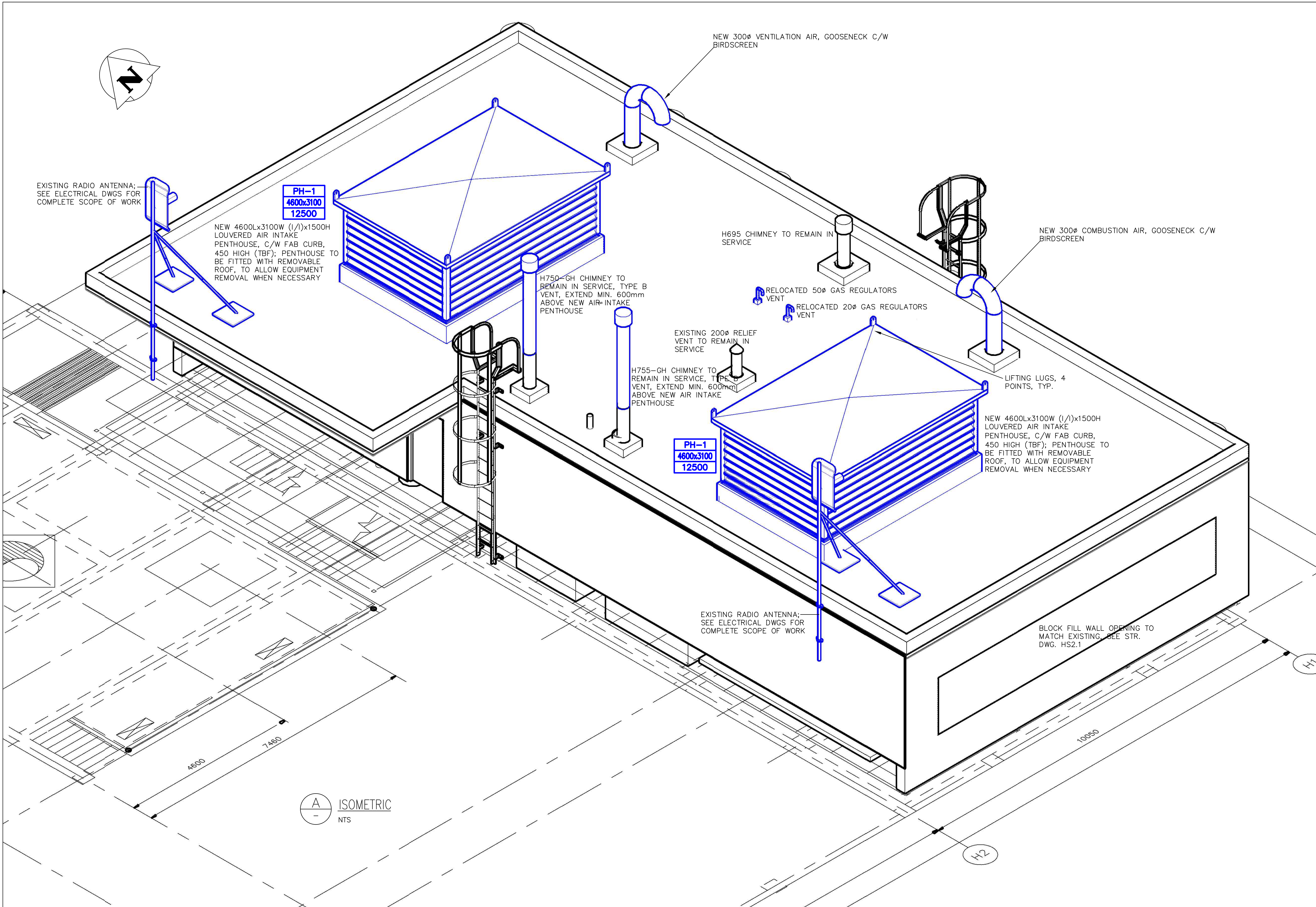


KEY PLAN



ISOMETRIC
NTS

APEGM
Certificate of Authorization
Alliance Engineering Services Inc.
No.2906 Date: _____

GENERAL NOTES

- PERFORM ALL WORK IN ACCORDANCE WITH ALL APPLICABLE CODES, STANDARDS AND PROVINCIAL MECHANICAL ENGINEERING & INSPECTIONS BRANCH REQUIREMENTS.
- COORDINATE WORKS WITH OTHER SUB-TRADES. REFER TO SPECIFIC DETAILS FOR CUTTING AND SEALING PENETRATIONS THROUGH OPENINGS & FIRE SEPARATIONS.
- REFER TO TECHNICAL SPECIFICATIONS FOR EQUIPMENT AND MATERIAL SPECIFICATIONS AND INSTALLATION CONSTRUCTION AND PHASING REQUIREMENTS.
- INSULATE DUCTWORK WHERE INDICATED AND SPECIFIED.
- SUPPORT ALL DUCTWORK TO MEET CODE REQUIREMENTS & ESTABLISHED INDUSTRY TRADE PRACTICES, (SMACNA, ASHRAE).
- INVESTIGATE SITE PRIOR TO CONSTRUCTION TO CONFIRM ALL DIMENSIONS AND INSTALLATION REQ'S.
- PERFORM ALL CUTTING & PATCHING NECESSARY FOR ANY REQUIRED OPENINGS.
- PROVIDE TAB TO ENSURE AIR DISTRIBUTION TO VOLUMES INDICATED.
- NOT ALL EQUIPMENT/PIPING, ETC. IS SHOWN.

S.M. ELEV.	FIELD BOOK #:
POSTED TO LBS:	
NO.	REVISIONS
DATE	BY

ALLIANCE
Engineering Services Inc.

DESIGNED BY: JC/AS	CHECKED BY: AFG
DRAWN BY: AS	APPROVED BY:
HOR. SCALE: NTS	RELEASED FOR CONSTRUCTION:
VERTICAL: NTS	DATE: 2010-06-23

ENGINEER'S SEAL
PROVINCE OF MANITOBA
REGISTERED PROFESSIONAL ENGINEER
A.F.G. GOSSEN
CONSULTANT DRAWING NO. HM2.7

THE CITY OF WINNIPEG
WATER AND WASTE DEPARTMENT

2010 HVAC REPLACEMENT AND ASSOCIATED WORKS
WEWPCC
AREA H - HEADWORKS
MECHANICAL ROOM ROOF - NEW CONDITIONS ISOMETRIC

SHEET 1 OF 1
CITY DRAWING NUMBER
1-0103G-M0023-001