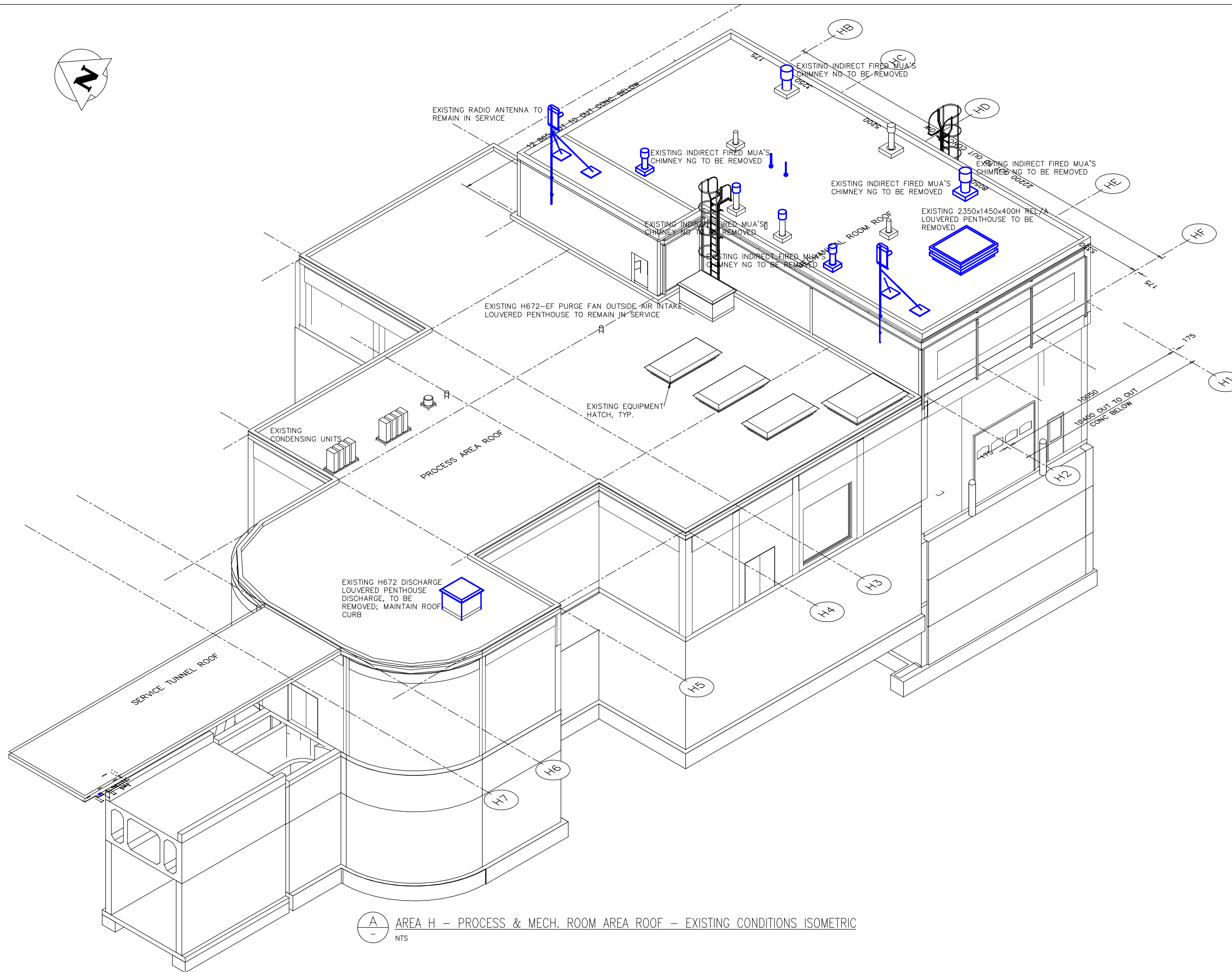


KEY PLAN



A
-
NTS
AREA H - PROCESS & MECH. ROOM AREA ROOF - EXISTING CONDITIONS ISOMETRIC

- GENERAL NOTES**
- PERFORM ALL WORK IN ACCORDANCE WITH ALL APPLICABLE CODES, STANDARDS AND PROVINCIAL MECHANICAL ENGINEERING & INSPECTIONS BRANCH REQUIREMENTS.
 - COORDINATE WORKS WITH OTHER SUB-TRADES. REFER TO SPECIFIC DETAILS FOR CUTTING AND SEALING PENETRATIONS THROUGH OPENINGS & FIRE SEPARATIONS.
 - REFER TO TECHNICAL SPECIFICATIONS FOR EQUIPMENT AND MATERIAL SPECIFICATIONS AND INSTALLATION CONSTRUCTION AND PHASING REQUIREMENTS.
 - INSULATE DUCTWORK WHERE INDICATED AND SPECIFIED.
 - SUPPORT ALL DUCTWORK TO MEET CODE REQUIREMENTS & ESTABLISHED INDUSTRY TRADE PRACTICES, (SMACNA, ASHRAE).
 - INVESTIGATE SITE PRIOR TO CONSTRUCTION TO CONFIRM ALL DIMENSIONS AND INSTALLATION REQ'S.
 - PERFORM ALL CUTTING & PATCHING NECESSARY FOR ANY REQUIRED OPENINGS.
 - PROVIDE TAB TO ENSURE AIR DISTRIBUTION TO VOLUMES INDICATED.
 - NOT ALL EQUIPMENT/PIPING, ETC. IS SHOWN.

APERA
Certificate of Authorization
Alliance Engineering Services Inc.
No.2906 Date: _____

S.M. ELEV.	FIELD BOOK #:
POSTED TO LBIS	
0 ISSUED FOR TENDER	2010-12-21 AFG
NO. REVISIONS	DATE BY

ALLIANCE
Engineering Services Inc.

DESIGNED BY JC/AS	CHECKED BY AFG
DRAWN BY AS	APPROVED BY
HOR. SCALE VERTICAL	RELEASED FOR CONSTRUCTION
DATE 2010-06-23	DATE

ENGINEER'S SEAL
PROVINCE OF MANITOBA
A.F.G. GOSSEN
REGISTERED PROFESSIONAL ENGINEER
CONSULTANT DRAWING NO. HM1.16

THE CITY OF WINNIPEG
WATER AND WASTE DEPARTMENT

2010 HVAC REPLACEMENT AND ASSOCIATED WORKS
WEWPCC
AREA H - HEADWORKS
PROCESS AND MECHANICAL ROOM AREA ROOF - EXISTING CONDITIONS ISOMETRIC

SHEET 1 OF 1
CITY DRAWING NUMBER
1-0103G-M0016-001