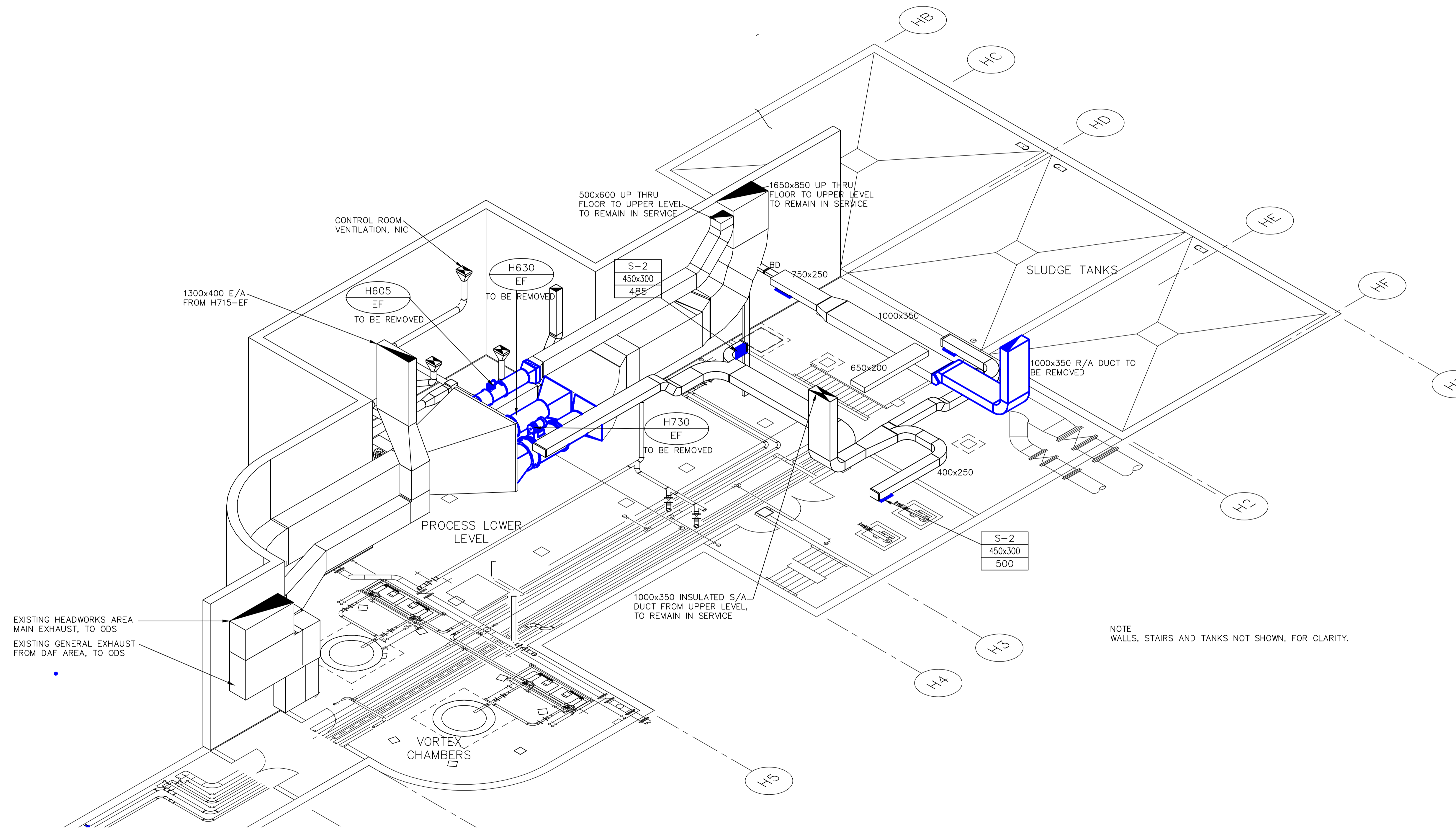


KEY PLAN



A AREA H - LOWER PROCESS LEVEL - EXISTING CONDITIONS ISOMETRIC
N.T.S.

- GENERAL NOTES**
- PERFORM ALL WORK IN ACCORDANCE WITH ALL APPLICABLE CODES, STANDARDS AND PROVINCIAL MECHANICAL ENGINEERING & INSPECTIONS BRANCH REQUIREMENTS.
 - COORDINATE WORKS WITH OTHER SUB-TRADES. REFER TO SPECIFIC DETAILS FOR CUTTING AND SEALING PENETRATIONS THROUGH OPENINGS & FIRE SEPARATIONS.
 - REFER TO TECHNICAL SPECIFICATIONS FOR EQUIPMENT AND MATERIAL SPECIFICATIONS AND INSTALLATION CONSTRUCTION AND PHASING REQUIREMENTS.
 - INSULATE DUCTWORK WHERE INDICATED AND SPECIFIED.
 - SUPPORT ALL DUCTWORK TO MEET CODE REQUIREMENTS & ESTABLISHED INDUSTRY TRADE PRACTICES, (SMACNA, ASHRAE).
 - INVESTIGATE SITE PRIOR TO CONSTRUCTION TO CONFIRM ALL DIMENSIONS AND INSTALLATION REQ'S.
 - PERFORM ALL CUTTING & PATCHING NECESSARY FOR ANY REQUIRED OPENINGS.
 - PROVIDE TAB TO ENSURE AIR DISTRIBUTION TO VOLUMES INDICATED.
 - NOT ALL EQUIPMENT/PIPING, ETC. IS SHOWN.



B.M. ELEV.	FIELD BOOK #:
POSTED TO LBS:	
NO.	REVISIONS
DATE	BY
00	ISSUED FOR TENDER
2010-12-21	AFG

ALLIANCE
Engineering Services Inc.

DESIGNED BY	JC/AS	CHECKED BY	AFG
DRAWN BY	AS	APPROVED BY	
HOR. SCALE	NTS	RELEASED FOR CONSTRUCTION	
VERTICAL	NTS	DATE	2010-06-23

ENGINEER'S SEAL

CONSULTANT DRAWING NO.
HM1.14

THE CITY OF WINNIPEG
WATER AND WASTE DEPARTMENT

2010 HVAC REPLACEMENT AND ASSOCIATED WORKS
WEWPCC
AREA H - HEADWORKS
LOWER PROCESS LEVEL VENTILATION - EXISTING CONDITIONS ISOMETRIC

SHEET 1 OF 1
CITY DRAWING NUMBER
1-0103G-M0014-001