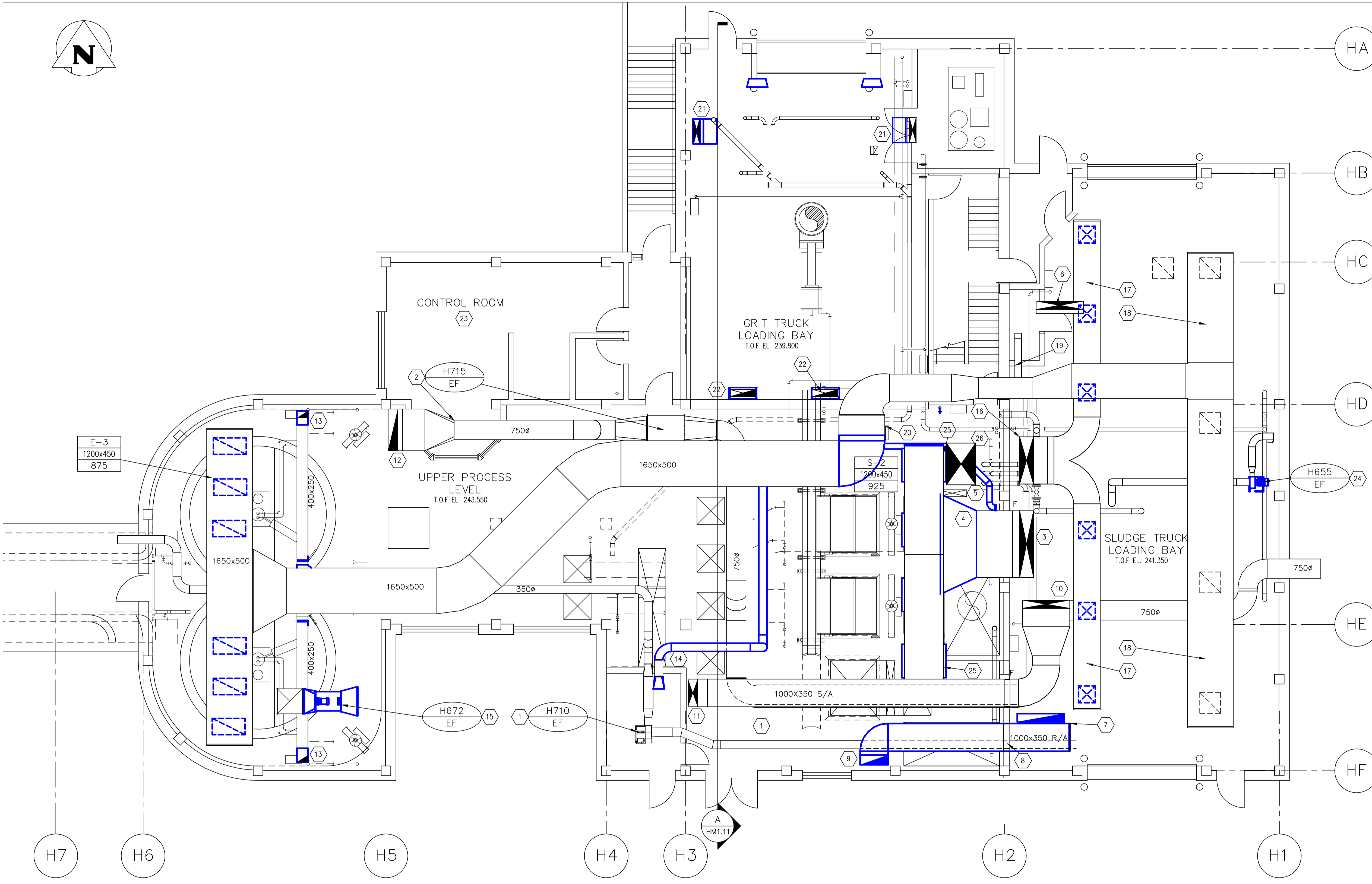


KEY PLAN

- KEY NOTES**
- EXISTING FOUL AIR EXHAUST FAN H710-EF, EXHAUST FROM DAF THICKENERS AND SLUDGE TANKS; DUCTWORK & CONTROLS TO REMAIN IN SERVICE.
 - EXISTING GENERAL EXHAUST FROM DAF BUILDING, EXHAUST FAN H715-EF, DUCTWORK & CONTROLS TO REMAIN IN SERVICE.
 - EXISTING 2400x500, INSULATED S/A RISER DUCT FROM H600/H650 IN MECHANICAL ROOM, TO REMAIN IN SERVICE.
 - REMOVE EXISTING TRANSITION; DISCONNECT EXISTING 1400x1000 S/A DUCT, TO BE RE-ASSIGNED TO E/A DUCT.
 - EXISTING 1400x1000 INSULATED, S/A DUCT & SUPPLY GRILLES; RE-USE AT EXTENT SHOWN ON DWG. HM2.9
 - EXISTING 1700x300 INSULATED, S/A RISER FROM H725-MUA, IN MECH ROOM TO REMAIN IN SERVICE.
 - EXISTING 1000x350 H700-AHU R/A DUCT TO BE CAPPED.
 - EXISTING 1000x350 R/A DUCT AND FIRE DAMPER TO BE REMOVED; WALL DUCT PENETRATION TO BE BLOCK FILLED, TO MATCH EXISTING WALL; SEE STR. DWG. LS2.1 DET.4
 - EXISTING 1000x350 R/A DUCT FLOOR PENETRATION TO BE CAPPED ABOVE FLOOR, SEE DETAIL.
 - EXISTING 1700x300 INSULATED, S/A RISER FROM H700-MUA IN MECHANICAL ROOM TO REMAIN IN SERVICE.
 - EXISTING 1000x350 INSULATED S/A DUCT THRU FLOOR TO LOWER LEVEL VENTILATION SYSTEM, TO REMAIN IN SERVICE.
 - EXISTING 1500x350 DAF GENERAL EXHAUST DUCT THRU FLOOR AT LOWER LEVEL, TO REMAIN IN SERVICE.
 - EXISTING 400x250 EXHAUST DUCT, FROM EFFLUENT CHANNELS, TO REMAIN IN SERVICE, CUT AND RECONNECTED TO NEW EXHAUST DUCT.
 - EXISTING S/A DUCT, OPEN ABOVE STAIRWELL ROOF; REMOVE EXISTING DUCT.
 - EXISTING PURGE FAN, H672, TO BE REMOVED, INCLUDING ROUND TO SQ. TRANSITION AND INLET CONE.
 - EXISTING 1700x500 INSULATED S/A RISER FROM MECHANICAL ROOM, TO REMAIN IN SERVICE.
 - EXISTING 950x500 INSULATED S/A DUCT, TO REMAIN IN SERVICE.
 - EXISTING 1650x500 E/A DUCT, TO REMAIN IN SERVICE.
 - EXISTING 250x150 WASHROOM E/A DUCT, CONNECTED TO TRUCK BAY EXHAUST, TO REMAIN IN SERVICE.
 - EXISTING 250x150 WASHROOM E/A DUCT, CONNECTED TO TRUCK BAY EXHAUST DUCT, TO REMAIN IN SERVICE.
 - EXISTING 1650x850 EXHAUST MAIN RISER DOWN TO LOWER LEVEL EXHAUST DUCTWORK; REMOVE EXISTING E/A DUCT ELBOW AND VERTICAL OFFSET. MAIN EXHAUST DUCT RISER SHALL BE CONNECTED TO EXISTING 1400x100 INSULATED S/A DUCT MAIN ABOVE SCREENS (RE-ASSIGNED AS EXHAUST); SEE DWG. HM2.9, HM2.14, & HM2.16.
 - EXISTING 250x900 S/A DOWN RISER, FROM GRIT COLLECTION MEZZ. ABOVE, TO BE EXTENDED DOWN; SEE DWG HM2.16, DET B.
 - EXISTING 250x900 E/A DOWN RISER, TO GRIT COLLECTION MEZZ. ABOVE, TO REMAIN IN SERVICE.
 - CONTROL ROOM DEDICATED HVAC SYSTEM, NIC.
 - EXISTING SLUDGE TRUCK LOADING FOUL AIR EXTRACTION FAN, TO BE REMOVED.
 - REMOVE EXISTING SUPPLY AIR GRILLES ON EAST SIDE OF EXISTING 1400x1000 DUCT; CAP OPENINGS AIR TIGHT.
 - EXISTING 1830x1070 PURGE AIR INTAKE DUCT AND MOTORIZED DAMPER; REMOVE EXISTING DAMPER.



A AREA H - UPPER PROCESS LEVEL, GRIT TRUCK & SLUDGE TRUCK BAY - EXISTING CONDITIONS
SCALE 1:75

GENERAL NOTES

- PERFORM ALL WORK IN ACCORDANCE WITH ALL APPLICABLE CODES, STANDARDS AND PROVINCIAL MECHANICAL ENGINEERING & INSPECTIONS BRANCH REQUIREMENTS.
- COORDINATE WORKS WITH OTHER SUB-TRADES. REFER TO SPECIFIC DETAILS FOR CUTTING AND SEALING PENETRATIONS THROUGH OPENINGS & FIRE SEPARATIONS.
- REFER TO TECHNICAL SPECIFICATIONS FOR EQUIPMENT AND MATERIAL SPECIFICATIONS AND INSTALLATION CONSTRUCTION AND PHASING REQUIREMENTS.
- INSULATE DUCTWORK WHERE INDICATED AND SPECIFIED.
- SUPPORT ALL DUCTWORK TO MEET CODE REQUIREMENTS & ESTABLISHED INDUSTRY TRADE PRACTICES, (SMACNA, ASHRAE).
- INVESTIGATE SITE PRIOR TO CONSTRUCTION TO CONFIRM ALL DIMENSIONS AND INSTALLATION REQ'S.
- PERFORM ALL CUTTING & PATCHING NECESSARY FOR ANY REQUIRED OPENINGS.
- PROVIDE TAB TO ENSURE AIR DISTRIBUTION TO VOLUMES INDICATED.
- NOT ALL EQUIPMENT/PIPING, ETC. IS SHOWN.

APEGM
Certificate of Authorization
Alliance Engineering Services Inc.
No.2906 Date: _____

S.M. ELEV.	FIELD BOOK #:
POSTED TO LBS:	
00 ISSUED FOR TENDER	2010-12-21 AFG
NO. REVISIONS	DATE BY

ALLIANCE
Engineering Services Inc.

DESIGNED BY: JC/AS	CHECKED BY: AFG
DRAWN BY: AS	APPROVED BY:
HOR. SCALE: 1:75	RELEASED FOR CONSTRUCTION
VERTICAL	DATE: 2010-06-23

ENGINEER'S SEAL
PROVINCE OF MANITOBA
A.F.G. GOSSSEN
REGISTERED PROFESSIONAL ENGINEER
CONSULTANT DRAWING NO. HM1.9

THE CITY OF WINNIPEG
WATER AND WASTE DEPARTMENT
2010 HVAC REPLACEMENT AND ASSOCIATED WORKS
WEWPCC
AREA H - HEADWORKS
UPPER PROCESS LEVEL, GRIT & SLUDGE TRUCK BAY VENTILATION - EXISTING CONDITIONS

SHEET 1 OF 1
CITY DRAWING NUMBER
1-0103G-M0009-001