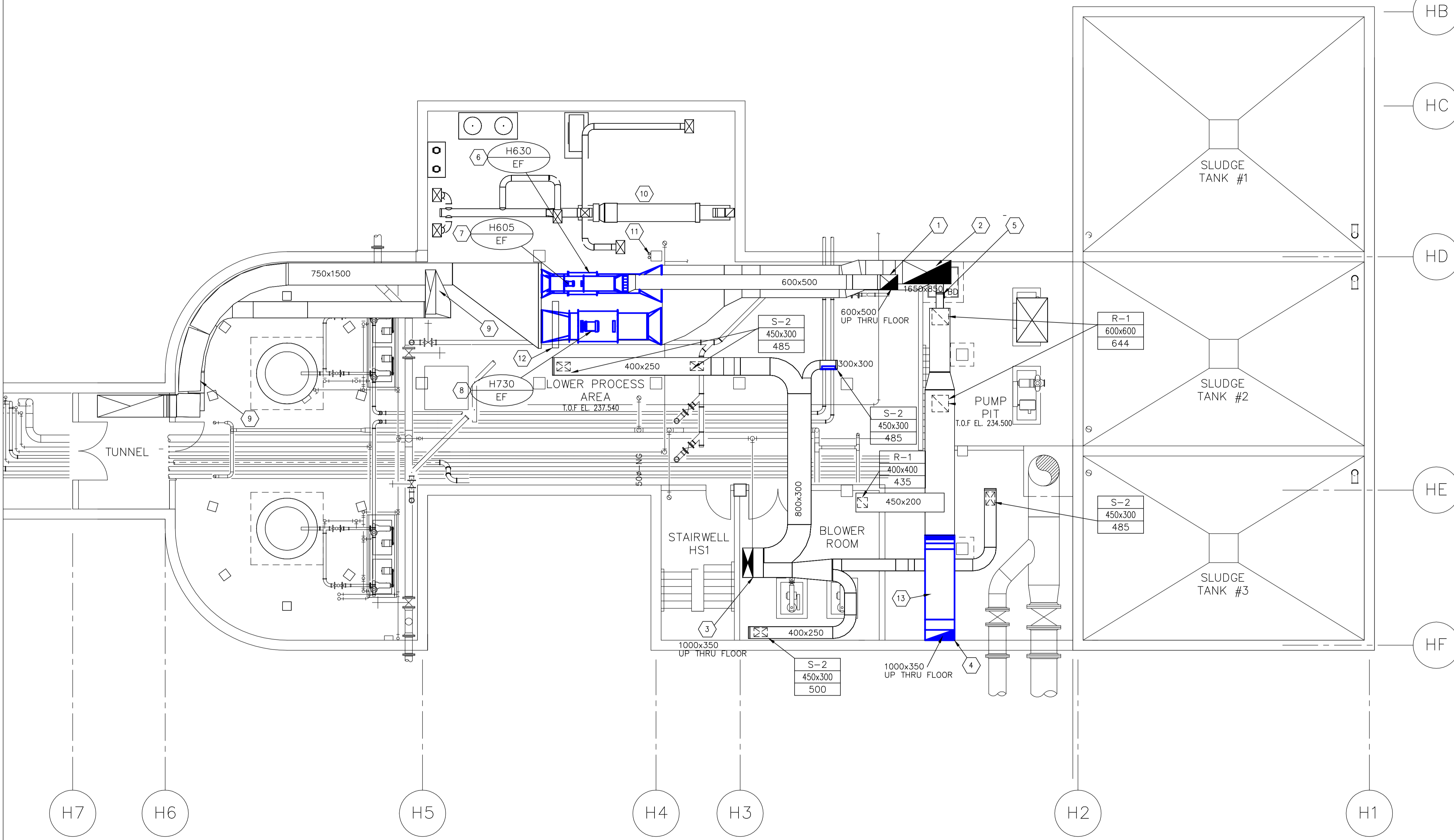


KEY PLAN

- KEY NOTES**
- EXISTING 500x600 EXHAUST DUCT, FROM GRIT TRUCK BAY EXHAUST SYSTEM (E/A DUCTWORK FOR H725-MUA VENTILATION SYSTEM); EXISTING DUCTWORK TO REMAIN IN SERVICE; NO DUCTWORK CHANGES REQUIRED ON THE EXHAUST DUCT IN THIS AREA; DUCT CHANGES REQUIRED TO INSTALL NEW EXHAUST FAN, H605-EF.
 - EXISTING 1650x850 EXHAUST DUCT FROM UPPER PROCESS AREA AND SLUDGE TRUCK BAY (EXHAUST DUCTWORK FOR H600/H650 MUA'S VENTILATION SYSTEM); DUCTWORK SHALL BE REWORKED AT UPPER LEVEL AND AS REQUIRED AT LOWER LEVEL FOR H630/730 EF'S INSTALLATION.
 - EXISTING 1000x350 S/A DUCT FROM UPPER LEVEL (DUCT FROM H700-AHU); DUCTWORK TO REMAIN IN SERVICE IN EXISTING CONFIGURATION OUTSIDE MECHANICAL ROOM.
 - EXISTING 1000x350 R/A DUCT TO EXISTING H700-MUA. RETURN AIR DUCT TO BE REMOVED. CAP R/A DUCT AT SUITABLE LOCATION, AS SHOWN; REMAINING R/A DUCTWORK AT LOWER LEVEL, SHALL BE CHANGED TO EXHAUST DUCT, PART OF NEW H700-MUA/H605A-EF VENTILATION SYSTEM; FLOOR OPENING TO BE CAPPED ABOVE FLOOR, SEE STR. DRAWING LS2.1, DETAIL 1.
 - EXISTING 250x100 R/A DUCT, OPEN BOTTOM FROM LOWER PUMP PIT AREA; DUCTWORK SHALL REMAIN AS IT IS, REBALANCE TO FLOW RATE INDICATED; DUCTWORK SHALL BE PART OF NEW H700-MUA/H605A-EF VENTILATION SYSTEM.
 - EXISTING EXHAUST FAN, H630, TO BE REMOVED; REMOVE FLEX CONNECTORS, TRANSITIONS AND ADAPTER FLANGES AS REQUIRED.
 - EXISTING EXHAUST FAN, H605, TO BE REMOVED; REMOVE FLEX CONNECTORS, TRANSITIONS AND ADAPTER FLANGES AS REQUIRED. SEE DETAIL- FOR SCOPE OF REMOVAL WORK.
 - EXISTING EXHAUST FAN, H730, TO BE REMOVED; REMOVE FLEX. CONNECTORS, TRANSITIONS AND ADAPTER FLANGES AS REQUIRED. SEE DETAIL- FOR SCOPE OF REMOVAL WORK.
 - EXISTING DUCT FROM UPPER FLOOR, PART OF DAF BUILDING EXHAUST SYSTEM; DUCTWORK AND EQUIPMENT TO REMAIN IN SERVICE; NO WORK RELATED TO THIS SYSTEM REQUIRED IN THIS CONTRACT.
 - EXISTING AIR SCRUBBER & HVAC SYSTEM FOR CONTROL ROOM ABOVE, NIC.
 - EXISTING CONDENSATE DRAINS, ON WEST SIDE OF COLUMNS TO BE RELOCATED
 - EXISTING POWER CABLE RACEWAY, TO BE RELOCATED TO SUIT NEW U605A-EF INSTALLATION, E 301.
 - REMOVE EXISTING 1000x350 SS R/A DUCT, FROM VERTICAL OFFSET TO FLOOR OPENING.



A AREA H - LOWER PROCESS LEVEL VENTILATION - EXISTING CONDITIONS
SCALE 1:75

GENERAL NOTES

- PERFORM ALL WORK IN ACCORDANCE WITH ALL APPLICABLE CODES, STANDARDS AND PROVINCIAL MECHANICAL ENGINEERING & INSPECTIONS BRANCH REQUIREMENTS.
- COORDINATE WORKS WITH OTHER SUB-TRADES. REFER TO SPECIFIC DETAILS FOR CUTTING AND SEALING PENETRATIONS THROUGH OPENINGS & FIRE SEPARATIONS.
- REFER TO TECHNICAL SPECIFICATIONS FOR EQUIPMENT AND MATERIAL SPECIFICATIONS AND INSTALLATION CONSTRUCTION AND PHASING REQUIREMENTS.
- INSULATE DUCTWORK WHERE INDICATED AND SPECIFIED.
- SUPPORT ALL DUCTWORK TO MEET CODE REQUIREMENTS & ESTABLISHED INDUSTRY TRADE PRACTICES, (SMACNA, ASHRAE).
- INVESTIGATE SITE PRIOR TO CONSTRUCTION TO CONFIRM ALL DIMENSIONS AND INSTALLATION REQ'S.
- PERFORM ALL CUTTING & PATCHING NECESSARY FOR ANY REQUIRED OPENINGS.
- PROVIDE TAB TO ENSURE AIR DISTRIBUTION TO VOLUMES INDICATED.
- NOT ALL EQUIPMENT/PIPING, ETC. IS SHOWN.



B.M. ELEV.	FIELD BOOK #:
POSTED TO LBIS	
00 ISSUED FOR TENDER	2010-12-21 AFG
NO. REVISIONS	DATE BY

ALLIANCE
Engineering Services Inc.

DESIGNED BY JC/AS	CHECKED BY AFG
DRAWN BY AS	APPROVED BY
HOR. SCALE 1:75	RELEASED FOR CONSTRUCTION
VERTICAL	DATE
DATE 2010-06-23	DATE

ENGINEER'S SEAL

CONSULTANT DRAWING NO. HM1.8

THE CITY OF WINNIPEG
WATER AND WASTE DEPARTMENT

2010 HVAC REPLACEMENT AND ASSOCIATED WORKS
WEWPCC
AREA H - HEADWORKS
LOWER PROCESS LEVEL VENTILATION - EXISTING CONDITIONS

SHEET 1 OF 1
CITY DRAWING NUMBER
1-0103G-M0008-001