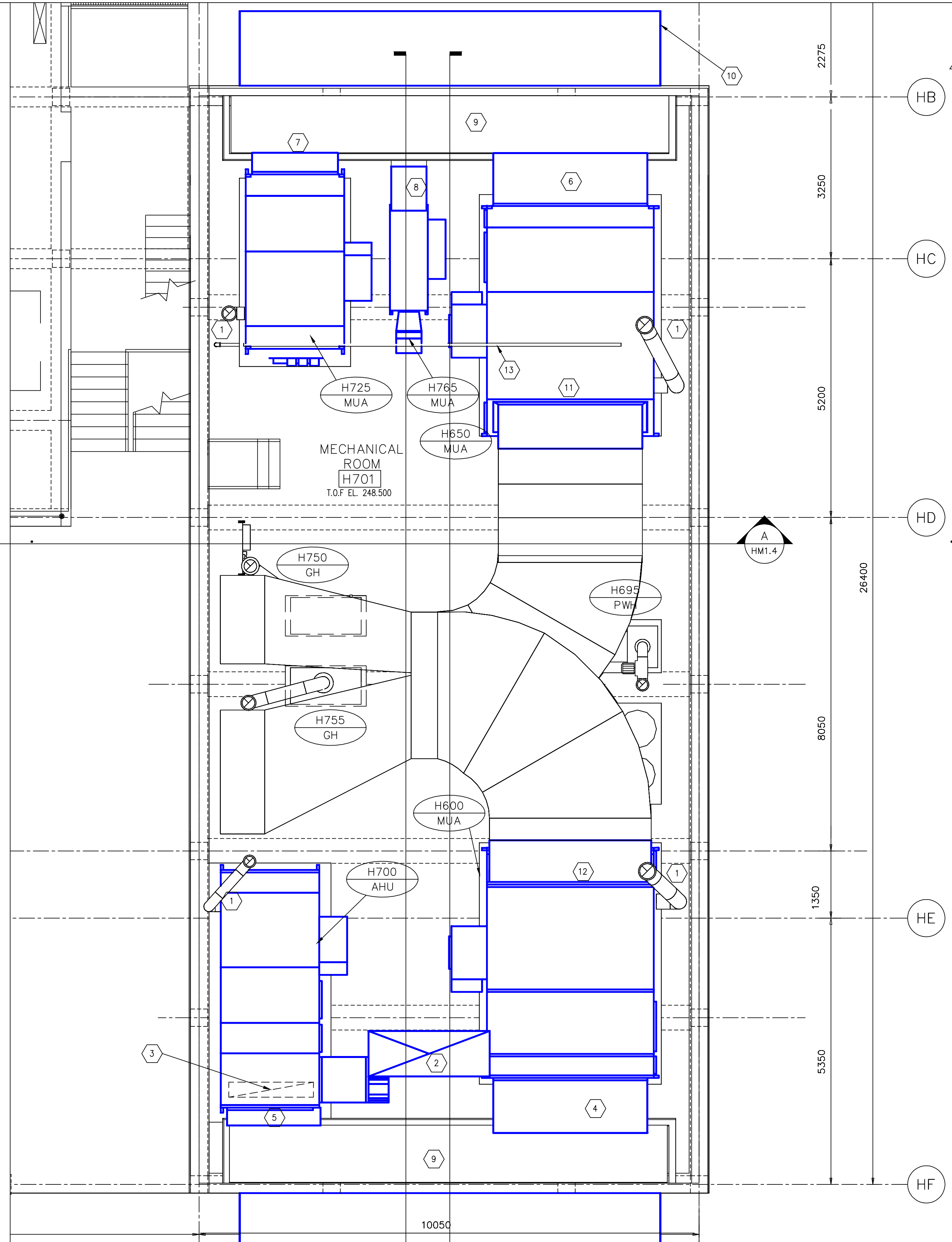


KEY PLAN

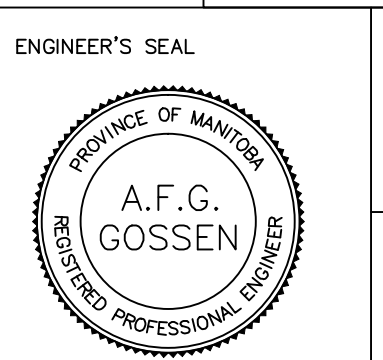
- KEY NOTES**
- 1 EXISTING CHIMNEY TO BE REMOVED, TYP. x4: U600 & U650 CHIMNEY ROOF OPENINGS TO BE RE-USED; U700 & U725 CHIMNEY ROOF CURBS TO BE REMOVED. RESTORE ROOF. **SEE STRUCTURAL DETAIL**
 - 2 EXISTING INDIRECT FIRED AIR HANDLING UNIT H700-AHU RELIEF AIR DUCT TO BE REMOVED UP TO ROOF LINE. REMOVE EXISTING LOUVERED PENTHOUSE AND ROOF CURB. RESTORE ROOF. **SEE STRUCTURAL DETAIL**
 - 3 EXISTING AIR HANDLING UNIT H700-AHU RETURN DUCT FLOOR OPENING TO BE CAPPED; CONCRETE FILL HOUSEKEEPING OPENING.
 - 4 EXISTING MAKEUP AIR UNIT H600-MUA INTAKE DUCT SLEEVE; EXTENT OF REMOVAL WORK TO SUIT NEW UNIT INSTALLATION
 - 5 EXISTING AIR HANDLING UNIT H700-AHU INTAKE DUCT SLEEVE; EXTENT OF REMOVAL WORK TO SUIT NEW UNIT INSTALLATION
 - 6 EXISTING MAKE UP AIR UNIT H650-MUA INTAKE DUCT SLEEVE; EXTENT OF REMOVAL WORK TO SUIT NEW UNIT INSTALLATION
 - 7 EXISTING MAKE UP AIR UNIT H725-MUA INTAKE DUCT SLEEVE; EXTENT OF REMOVAL WORK TO SUIT NEW UNIT INSTALLATION
 - 8 EXISTING H765-MUA INTAKE DUCT SLEEVE; REMOVE, OPENING WITHIN NEW NORTH INTAKE DUCT PLENUM
 - 9 EXISTING O/A INTAKE PLENUMS TO BE MAINTAINED; BLOCK EXTERIOR OPENING, TYP. **SEE STRUCTURAL DWG-**
 - 10 EXISTING O/A FRP INTAKE HOODS TO BE REMOVED, INCLUDING SS FRAME, FASTENERS, MISC. HARDWARE AND BIRD SCREEN, TYP. **SEE STRUCTURAL DWG-**
 - 11 EXISTING S/A DISCHARGE DUCT TRANSITION AND ELBOW TO BE REMOVED FOR NEW MAKE UP AIR UNIT H650-MUA TIE-IN, TO EXTENT REQUIRED BY NEW UNIT INSTALLATION
 - 12 EXISTING S/A DISCHARGE DUCT TRANSITION TO BE REMOVED FOR NEW MAKE UP AIR UNIT H600-MUA TIE-IN, TO EXTENT REQUIRED BY NEW UNIT INSTALLATION
 - 13 EXISTING 50# PROCESS WATER LINE, ACROSS THE MECHANICAL ROOM, EAST-WEST, AT THIS LOCATION UNDER JOISTS; LINE TO BE RELOCATED UP IN JOIST SPACE TO SUIT NEW O/A DUCT PLENUM INSTALLATION



- GENERAL NOTES**
1. PERFORM ALL WORK IN ACCORDANCE WITH ALL APPLICABLE CODES, STANDARDS AND PROVINCIAL MECHANICAL ENGINEERING & INSPECTIONS BRANCH REQUIREMENTS.
 2. COORDINATE WORKS WITH OTHER SUB-TRADES. REFER TO SPECIFIC DETAILS FOR CUTTING AND SEALING PENETRATIONS THROUGH OPENINGS & FIRE SEPARATIONS.
 3. REFER TO TECHNICAL SPECIFICATIONS FOR EQUIPMENT AND MATERIAL SPECIFICATIONS AND INSTALLATION CONSTRUCTION AND PHASING REQUIREMENTS.
 4. INSULATE DUCTWORK WHERE INDICATED AND SPECIFIED.
 5. SUPPORT ALL DUCTWORK TO MEET CODE REQUIREMENTS & ESTABLISHED INDUSTRY TRADE PRACTICES, (SMACNA, ASHRAE).
 6. INVESTIGATE SITE PRIOR TO CONSTRUCTION TO CONFIRM ALL DIMENSIONS AND INSTALLATION REQ'S.
 7. PERFORM ALL CUTTING & PATCHING NECESSARY FOR ANY REQUIRED OPENINGS.
 8. PROVIDE TAB TO ENSURE AIR DISTRIBUTION TO VOLUMES INDICATED.
 9. NOT ALL EQUIPMENT/PIPING, ETC. IS SHOWN.

A AREA H - MECHANICAL ROOM EXISTING DUCTWORK - PLAN AT EL. 248.500
SCALE 1:50

APEGM
Certificate of Authorization
Alliance Engineering Services Inc.
No.2906 Date: _____



THE CITY OF WINNIPEG
WATER AND WASTE DEPARTMENT

2010 HVAC REPLACEMENT
AND ASSOCIATED WORKS
WEWPCC
AREA H - HEADWORKS
MECHANICAL ROOM DUCTWORK - EXISTING CONDITIONS

SHEET 1 OF 1
CITY DRAWING NUMBER
1-0103G-M0002-001

B.M. ELEV.	FIELD BOOK #:
POSTED TO LBIS	
NO.	REVISIONS
DATE	BY

ALLIANCE
Engineering Services Inc.

DESIGNED BY	JC/AS	CHECKED BY	AFG
DRAWN BY	AS	APPROVED BY	
HOR. SCALE	1:50	RELEASED FOR CONSTRUCTION	
VERTICAL		DATE	2010-06-23

CONSULTANT DRAWING NO.
HM1.2