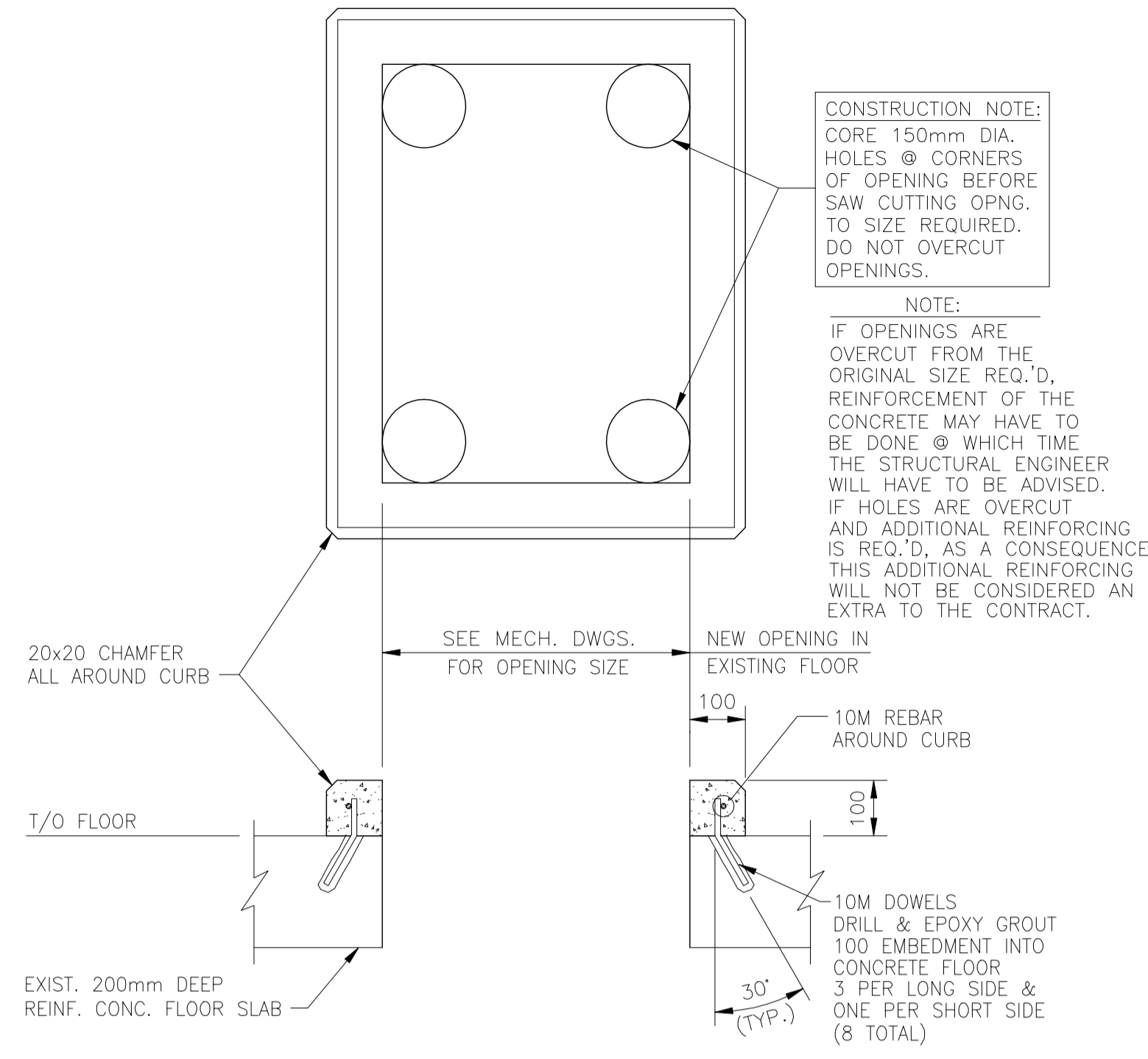
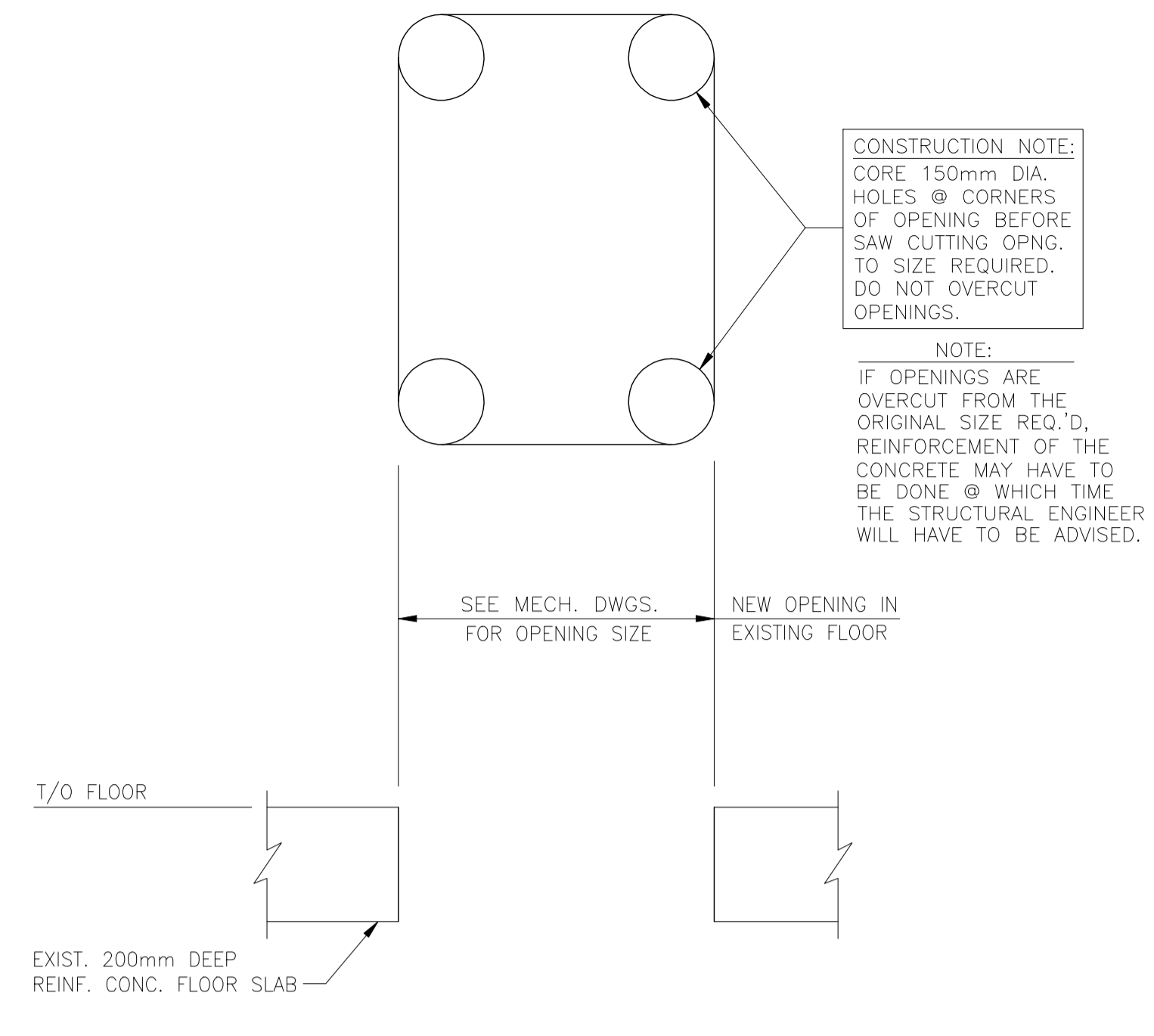


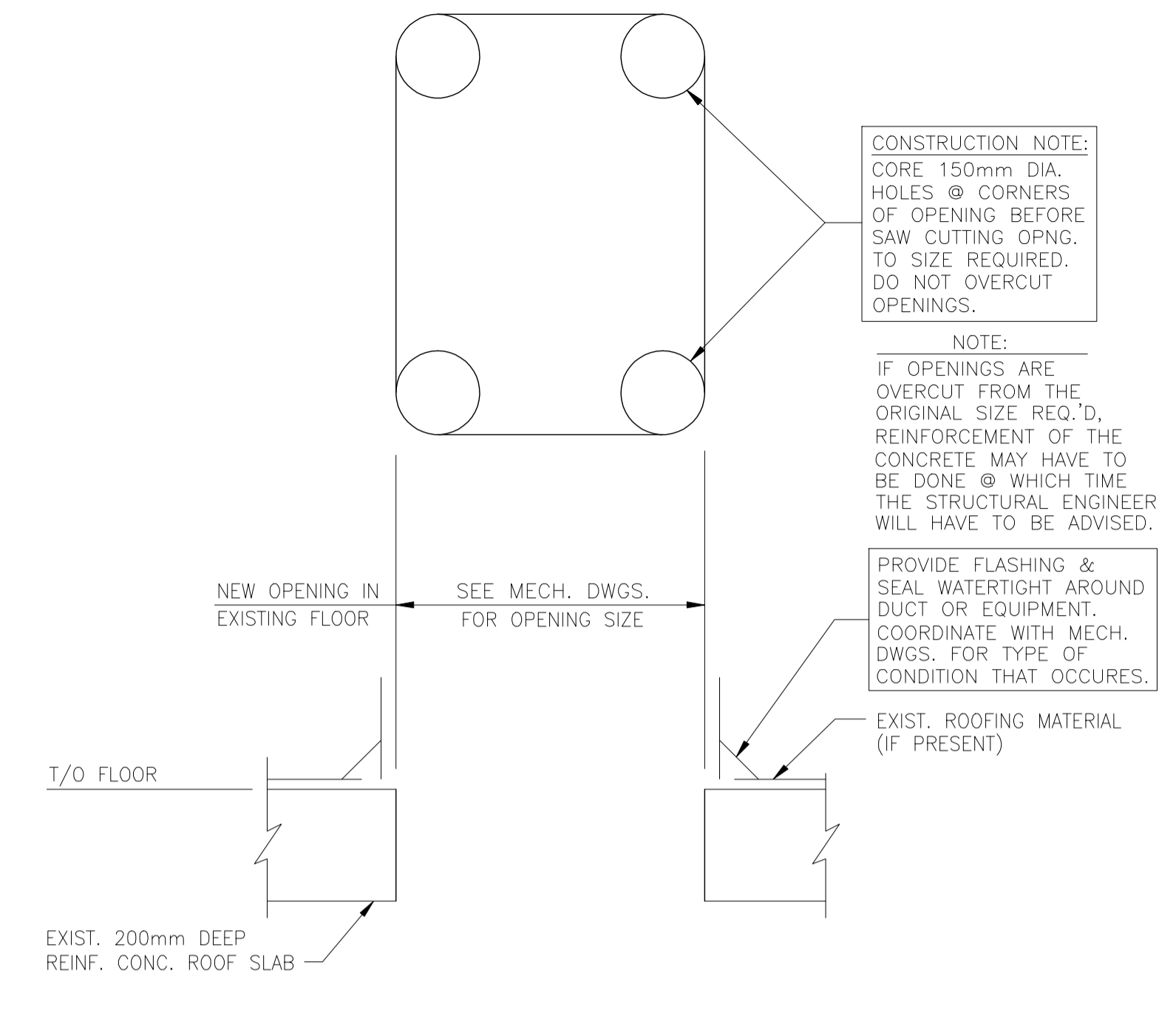
1 DETAIL
SCALE: 1:10
TYPICAL HOUSEKEEPING PAD DETAIL: THIS DETAIL CAN BE USED FOR ALL HOUSEKEEPING PADS REQUIRED FOR MECHANICAL UNITS UNLESS NOTED OTHERWISE ON THE DRAWINGS.



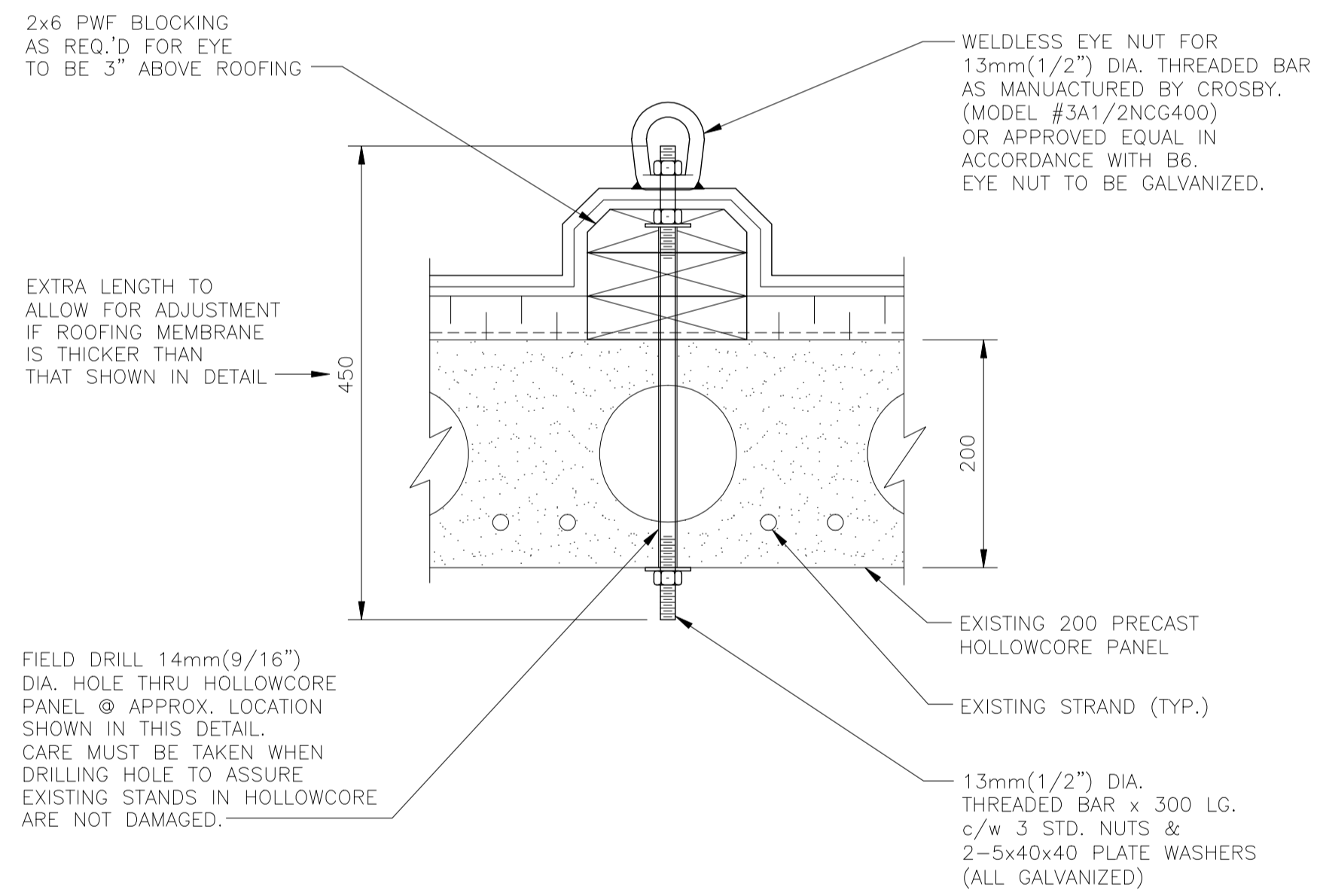
2 DETAIL
SCALE: 1:10
TYP. NEW CURB DETAIL AROUND NEW OPENING IN EXIST. CONCRETE FLOOR: THIS DETAIL CAN BE USED FOR ALL CURBS REQUIRED AROUND PERIMETER OF NEW OPENINGS THRU EXISTING 200mm THICK CONCRETE FLOORS.



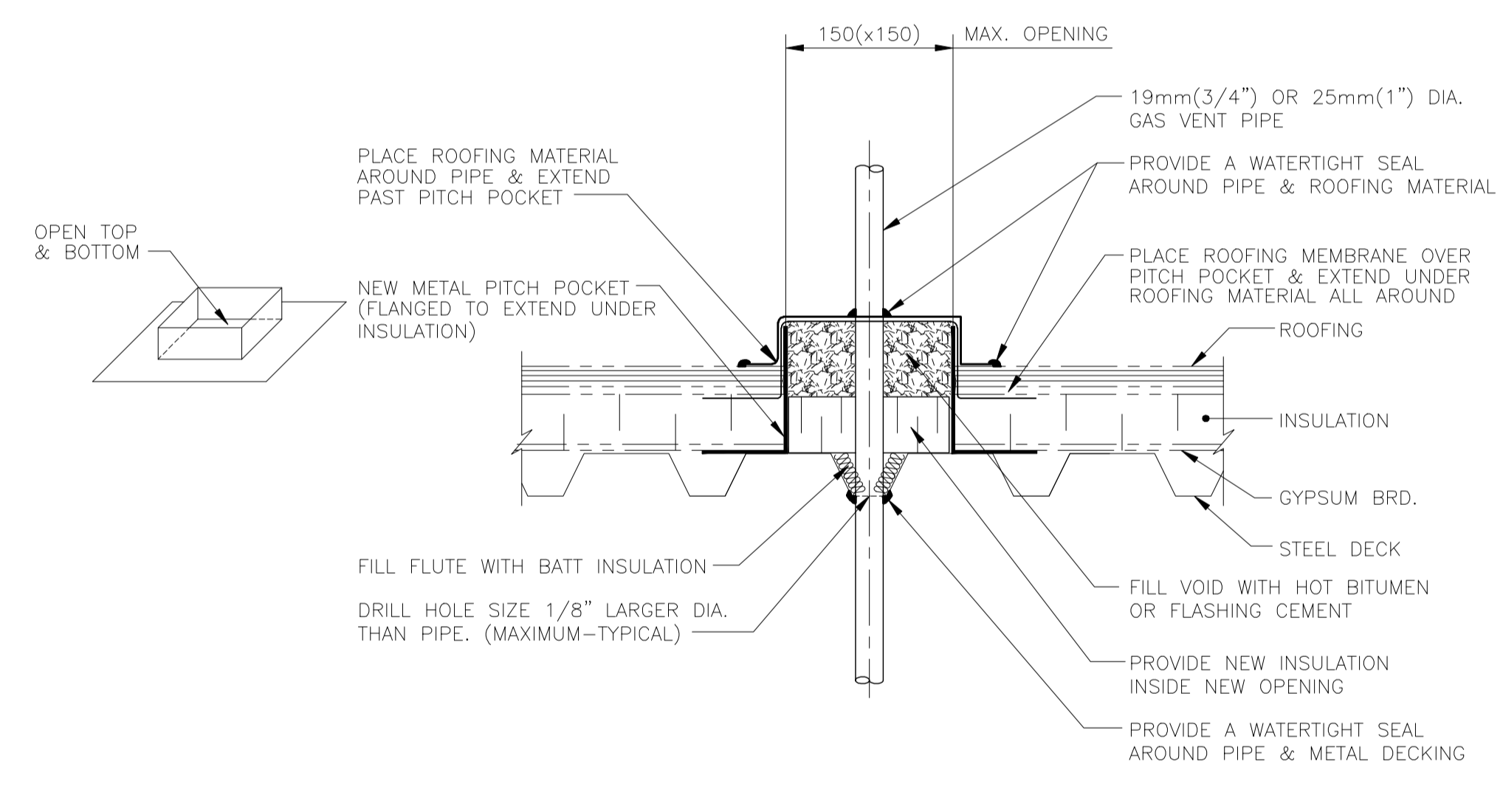
3 DETAIL
SCALE: 1:10
TYP. NEW OPENING DETAIL FOR EXIST. CONCRETE FLOOR: THIS DETAIL CAN BE USED FOR ALL NEW OPENINGS THRU EXISTING 200mm THICK CONCRETE FLOORS.



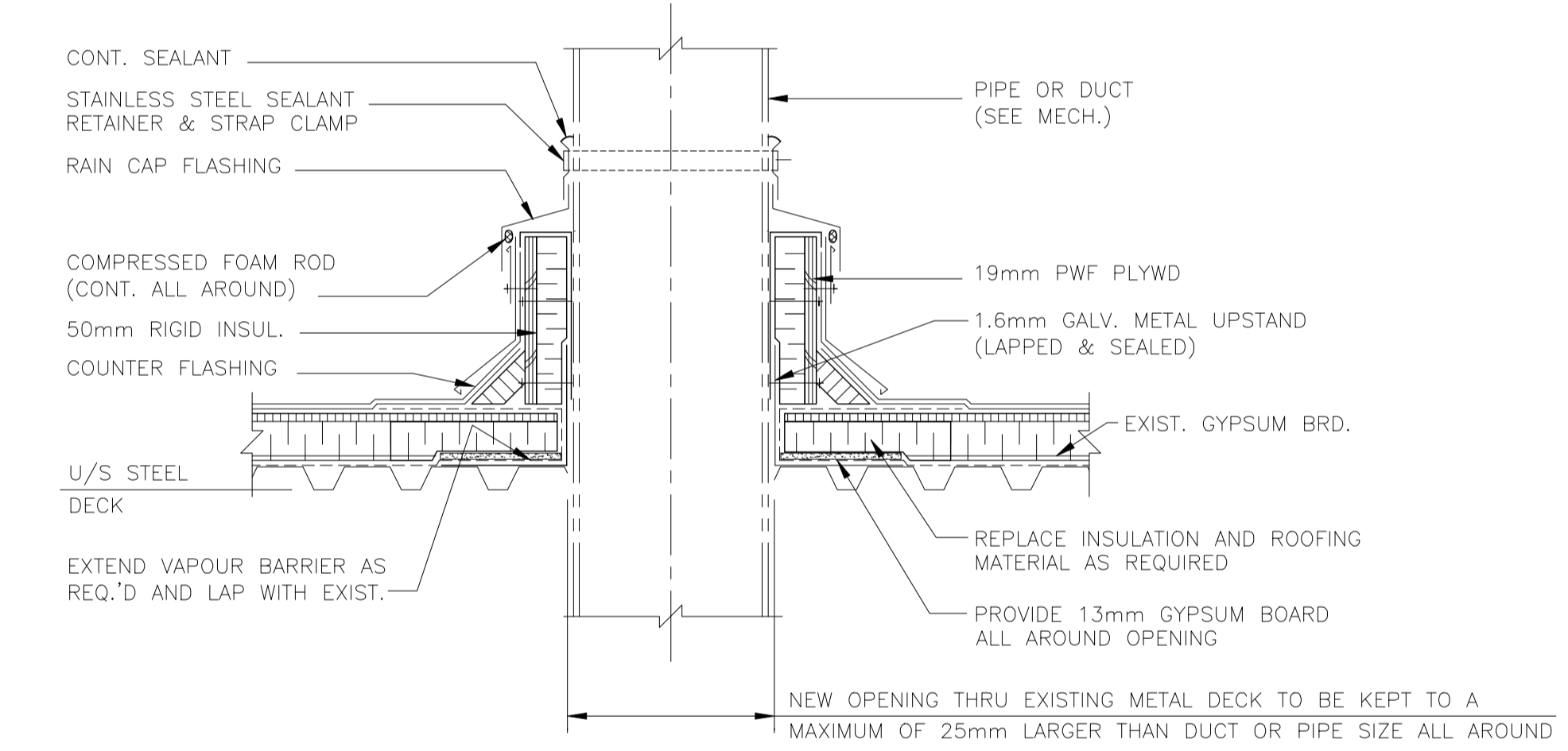
4 DETAIL
SCALE: 1:10
TYP. NEW OPENING DETAIL FOR EXISTING CONCRETE ROOF: THIS DETAIL CAN BE USED FOR ALL NEW OPENINGS THRU EXIST. 200mm THICK CONCRETE ROOF.



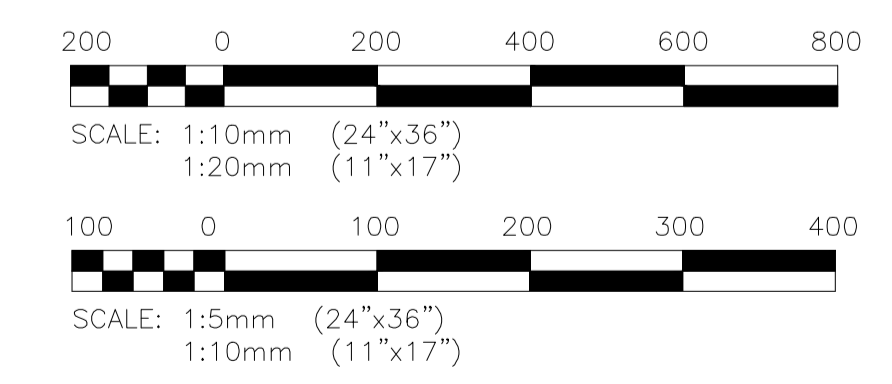
5 DETAIL
SCALE: 1:5
GUY WIRE ANCHOR DETAIL FOR ATTACHING 3MM(1/8") DIA. CABLE TO PRECAST PANEL ROOF.



6 DETAIL
SCALE: 1:5
TYP. PITCH POCKET DETAIL FOR 19mm(3/4") OR 25mm(1") GAS VENT PIPES EXTENDING THRU ROOF DECK AND INSULATION.



7 DETAIL
SCALE: 1:10
TYPICAL NEW OPENING DETAIL FOR EXIST. METAL DECK & INSULATED ROOF: THIS DETAIL CAN BE USED FOR NEW DUCTS OR PIPES WHICH HAVE A MAXIMUM 300mm DIA. OR 300mmx300mm DUCT SIZE.



APEGN
Certificate of Authorization
KGS Group
No. 245 Date: 10/12/21

KGS GROUP
CONSULTING ENGINEERS

B.M. ELEV.	FIELD BOOK #:
POSTED TO LBIS	
DESIGNED BY: RJL	CHECKED BY: RJL
DRAWN BY: JF	APPROVED BY:
HOR. SCALE AS NOTED	RELEASED FOR CONSTRUCTION
VERTICAL AS NOTED	
ISSUED FOR TENDER 2010-12-21 RJL	
NO. REVISIONS	DATE BY DATE 2010-11-17

ALLIANCE
Engineering Services Inc.

ENGINEER'S SEAL
PROVINCE OF MANITOBA
REGISTERED PROFESSIONAL ENGINEER
R.J. LONG
CONSULTANT DRAWING NO. LS2.2

THE CITY OF WINNIPEG
WATER AND WASTE DEPARTMENT

2010 HVAC REPLACEMENT AND ASSOCIATED WORKS
WEWPCC
ALL AREAS

SHEET 1 OF 1
CITY DRAWING NUMBER
1-0103A-S0004-001

TYPICAL STRUCTURAL DETAILS & SECTIONS