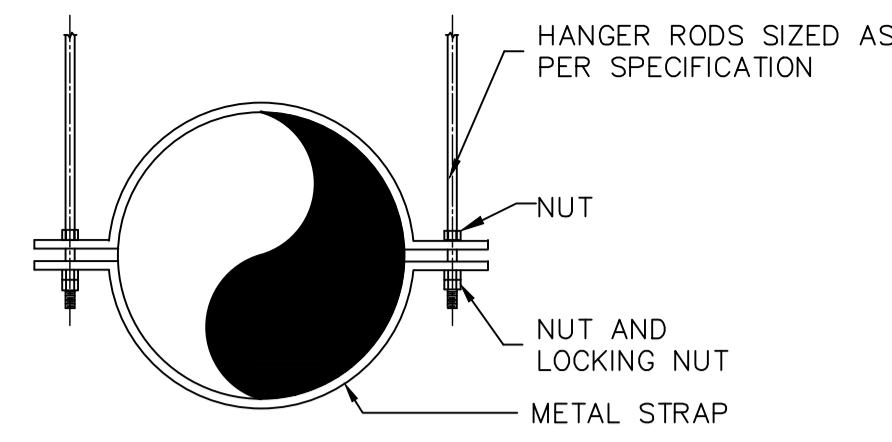
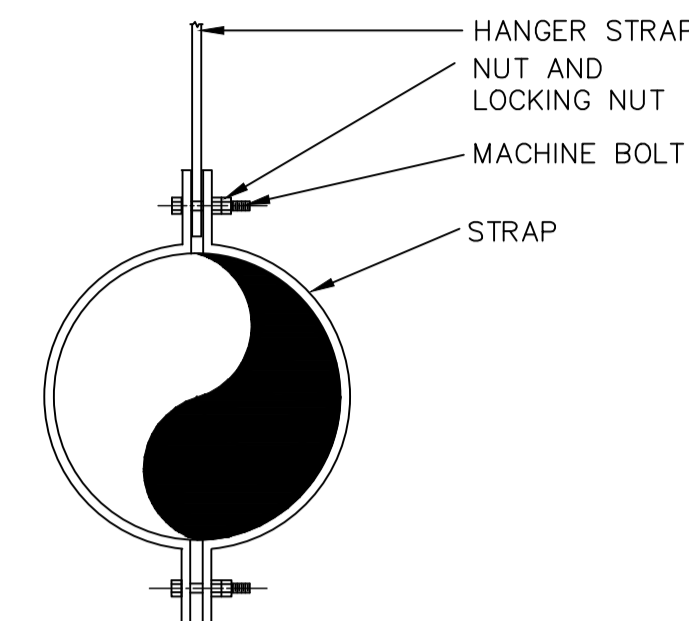


KEY PLAN



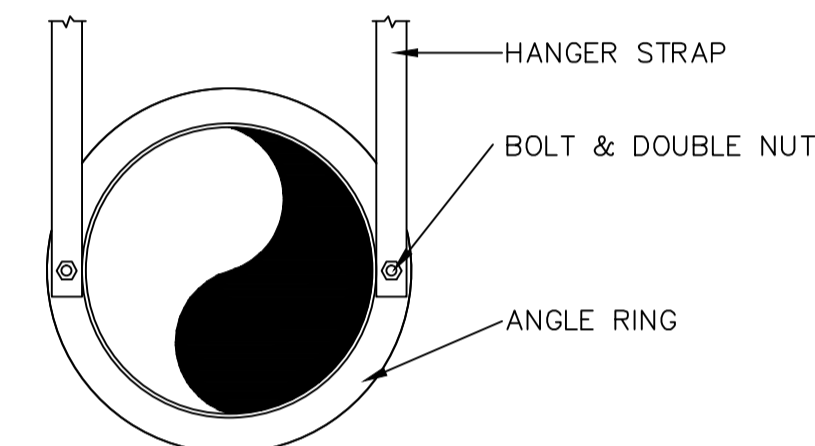
V 011 ROUND DUCT - DOUBLE ROD HANGER SUPPORT

NTS
SMACNA INDUSTRIAL ROUND DUCT CONSTRUCTION, FIG. 23



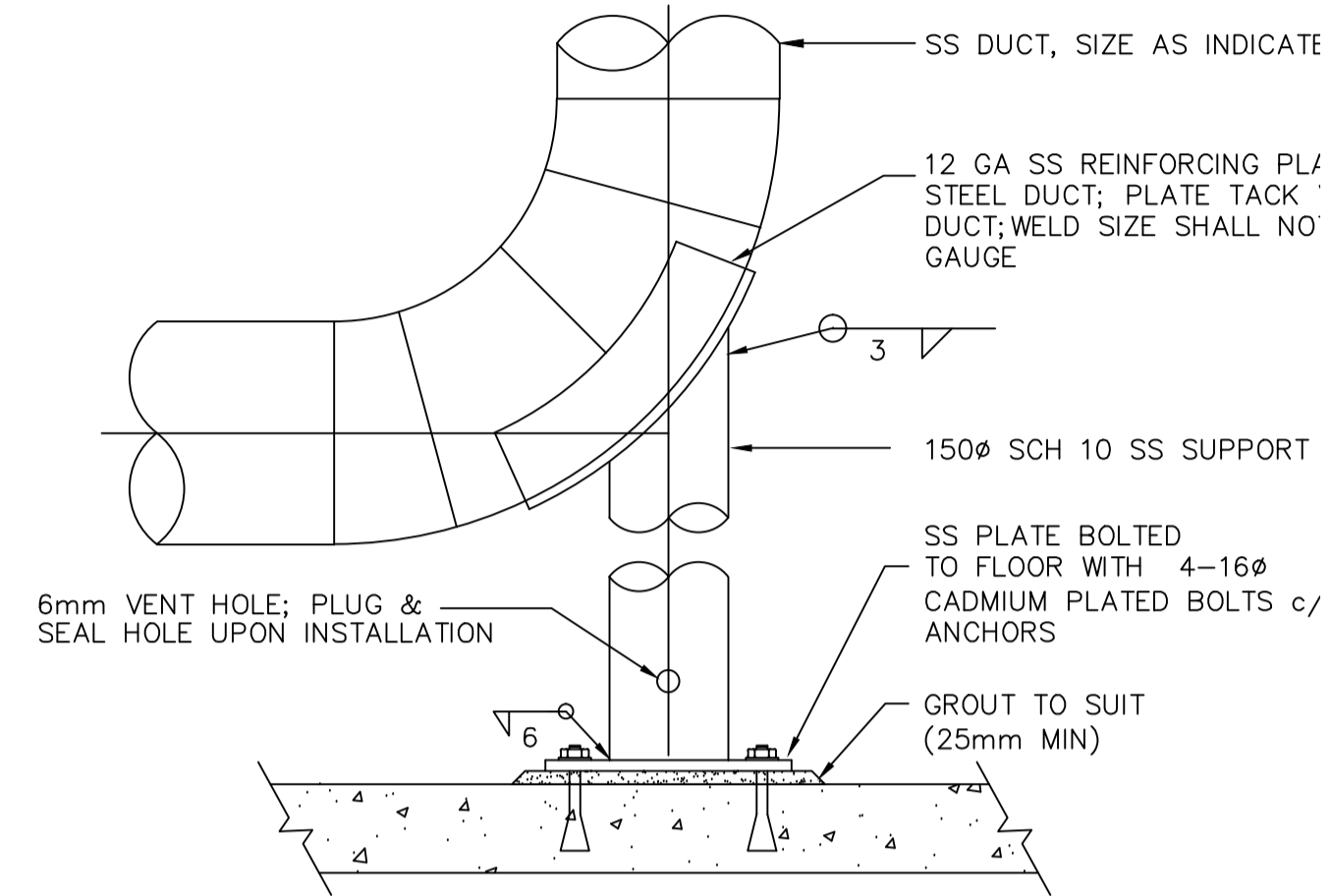
V 012 ROUND DUCT - STRAP HANGER SUPPORT

NTS
SMACNA INDUSTRIAL ROUND DUCT CONSTRUCTION, FIG. 24



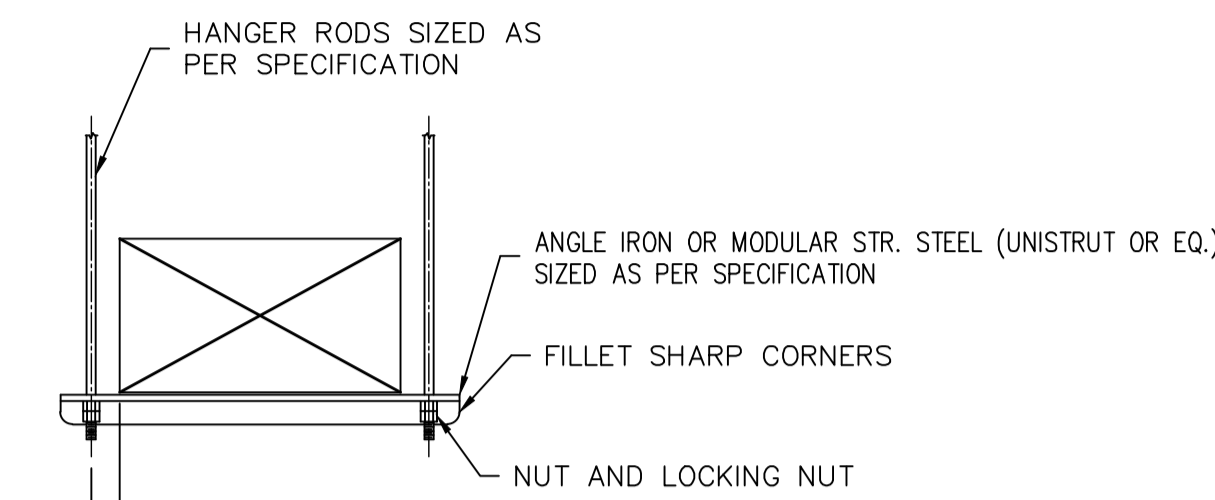
V 013 ROUND DUCT - ANGLE RING STRAP HANGER SUPPORT

NTS
SMACNA INDUSTRIAL ROUND DUCT CONSTRUCTION, FIG. 22



V 014 ROUND DUCT BASE ELBOW SUPPORT

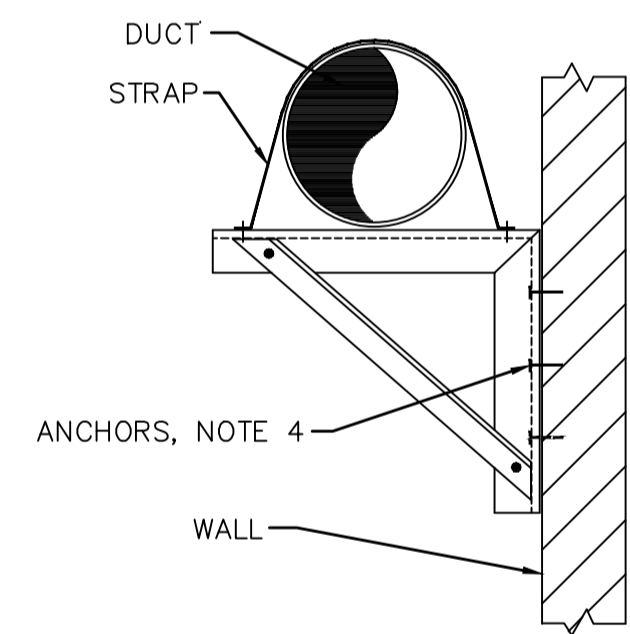
NTS



NOTES:
1) HANGERS MUST NOT DEFORM DUCT SHAPE.
2) DO NOT EXCEED ALLOWABLE LOAD LIMITS.

V 010 RECTANGULAR DUCT - TRAPEZE SUPPORT

NTS



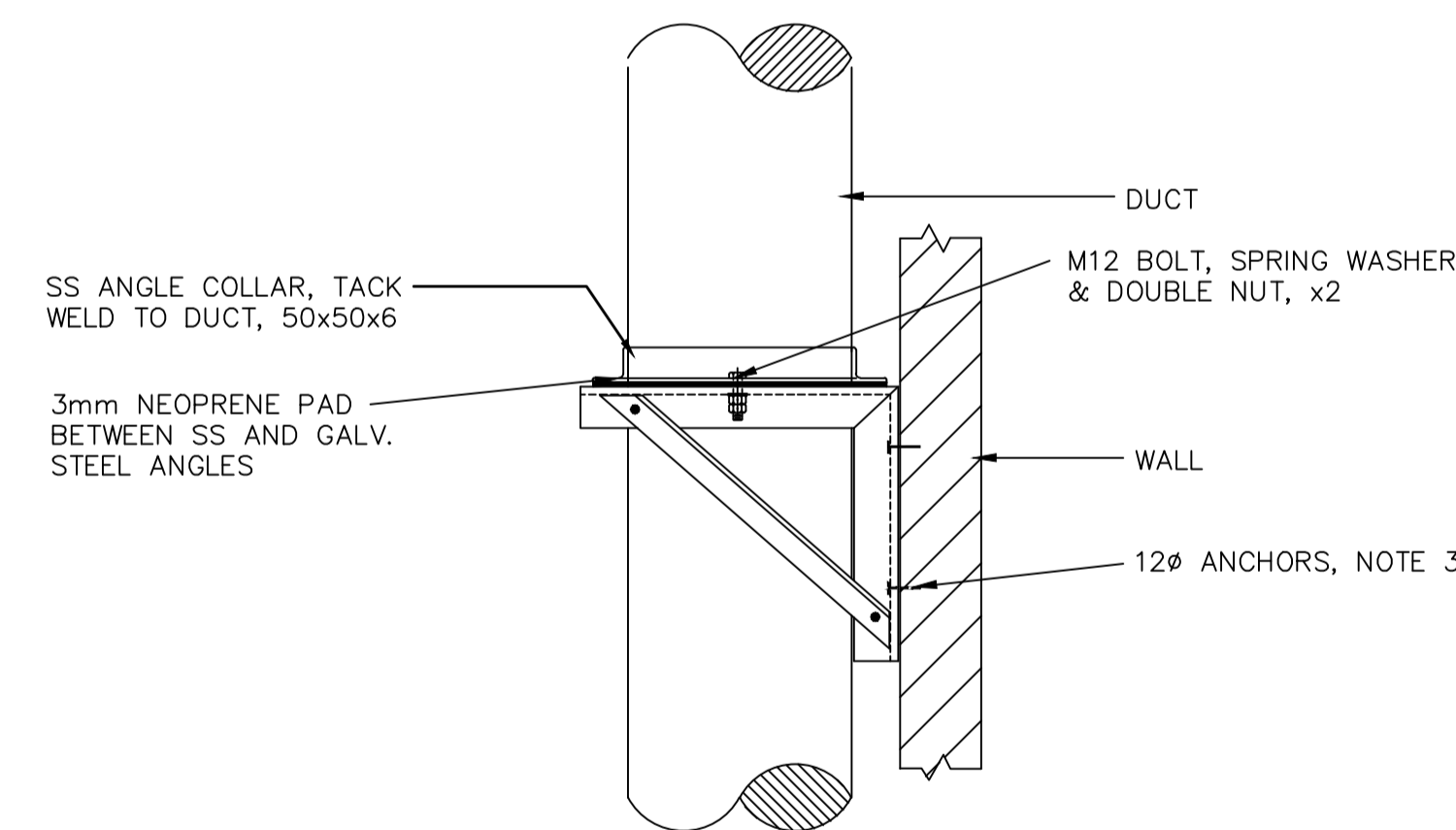
HORIZONTAL DUCT

TYPICAL SIZING
DUCT SIZE ANGLE
900x450 OR EQUIV. ROUND 50x50x6
1200x750 OR EQUIV. ROUND 75x75x6

NOTE:
1) BRACKETS ARE SIZED FOR 3600mm OF DUCT MAX
2) LOCATE DUCTS AGAINST WALL OR MAX OF 50mm AWAY FROM WALL
3) SECURE WITH APPROVED ANCHORS TO MATCH WALL CONSTRUCTION

V 015 DUCT - WALL SUPPORT

NTS



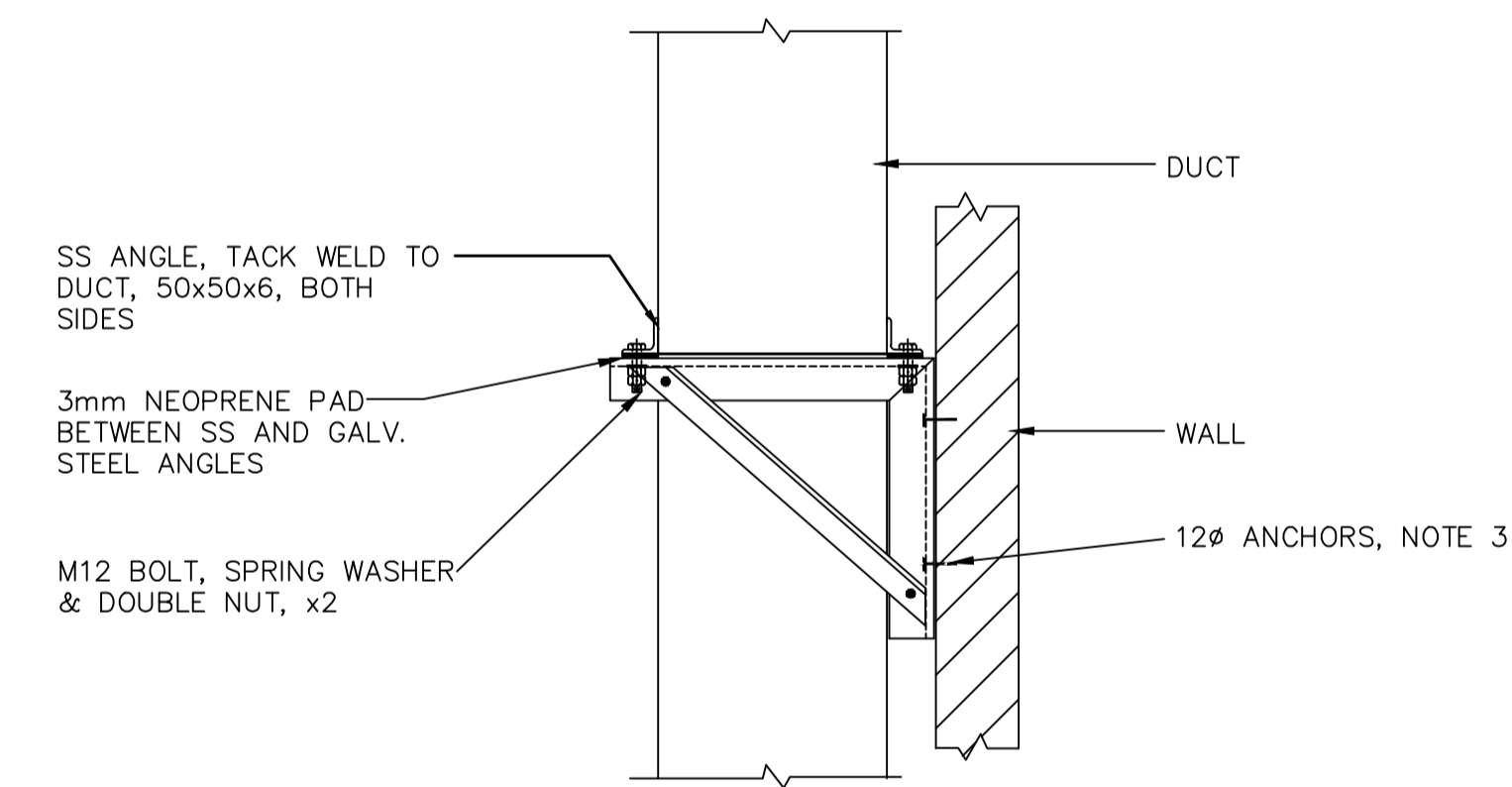
VERTICAL ROUND DUCT

TYPICAL SIZING
DUCT SIZE ANGLE
900Ø OR LESS 50x50x6
1200Ø OR LARGER 75x75x6

NOTE:
1) BRACKETS ARE SIZED FOR 3600mm OF DUCT MAX
2) LOCATE DUCTS AGAINST WALL OR MAX OF 50mm AWAY FROM WALL
3) SECURE WITH APPROVED ANCHORS TO MATCH WALL CONSTRUCTION

V 016 VERTICAL DUCT - WALL SUPPORT

NTS



VERTICAL RECTANGULAR DUCT

TYPICAL SIZING
DUCT SIZE ANGLE
900x450 25x25x3
1200x750 30x30x3

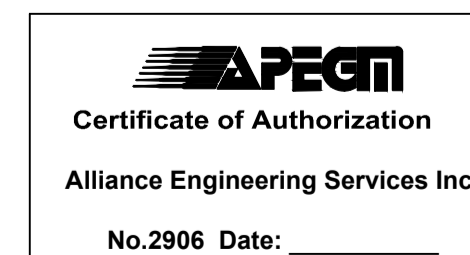
NOTE:
1) BRACKETS ARE SIZED FOR 3600mm OF DUCT MAX
2) LOCATE DUCTS AGAINST WALL OR MAX OF 50mm AWAY FROM WALL
3) SECURE WITH APPROVED ANCHORS TO MATCH WALL CONSTRUCTION

V 017 VERTICAL DUCT - WALL SUPPORT

NTS

GENERAL NOTES

- PERFORM ALL WORK IN ACCORDANCE WITH ALL APPLICABLE CODES, STANDARDS AND PROVINCIAL MECHANICAL ENGINEERING & INSPECTIONS BRANCH REQUIREMENTS.
- COORDINATE WORKS WITH OTHER SUB-TRADES. REFER TO SPECIFIC DETAILS FOR CUTTING AND SEALING PENETRATIONS THROUGH OPENINGS & FIRE SEPARATIONS.
- REFER TO TECHNICAL SPECIFICATIONS FOR EQUIPMENT AND MATERIAL SPECIFICATIONS AND INSTALLATION REQUIREMENTS.
- INSULATE DUCTWORK WHERE INDICATED AND SPECIFIED.
- SUPPORT ALL DUCTWORK TO MEET CODE REQUIREMENTS & ESTABLISHED INDUSTRY TRADE PRACTICES, (SMACNA, ASHRAE).
- INVESTIGATE SITE PRIOR TO CONSTRUCTION TO CONFIRM ALL DIMENSIONS AND INSTALLATION REQ'S.
- PERFORM ALL CUTTING & PATCHING NECESSARY FOR ANY REQUIRED OPENINGS.
- PROVIDE TAB TO ENSURE AIR DISTRIBUTION TO VOLUMES INDICATED.



B.M. ELEV.	236.160	FIELD BOOK #:	
POSTED TO LBIS			
DESIGNED BY	AFG/AS	CHECKED BY	
DRAWN BY	AS	APPROVED BY	
HOR. SCALE	NTS	RELEASED FOR CONSTRUCTION	
00 ISSUED FOR TENDER	2010-12-21	AFG	
NO. REVISIONS	DATE	BY	DATE
			2010-08-23

ALLIANCE
Engineering Services Inc.

ENGINEER'S SEAL
A.F.G. GOSSEN
CONSULTANT DRAWING NO. LM2.3



THE CITY OF WINNIPEG
WATER AND WASTE DEPARTMENT

2010 HVAC REPLACEMENT
AND ASSOCIATED WORKS
WEWPCC
GENERAL AREA
DETAILS - SHEET 3 OF 6

SHEET 1 OF 1
CITY DRAWING NUMBER
1-0103A-M0008-003