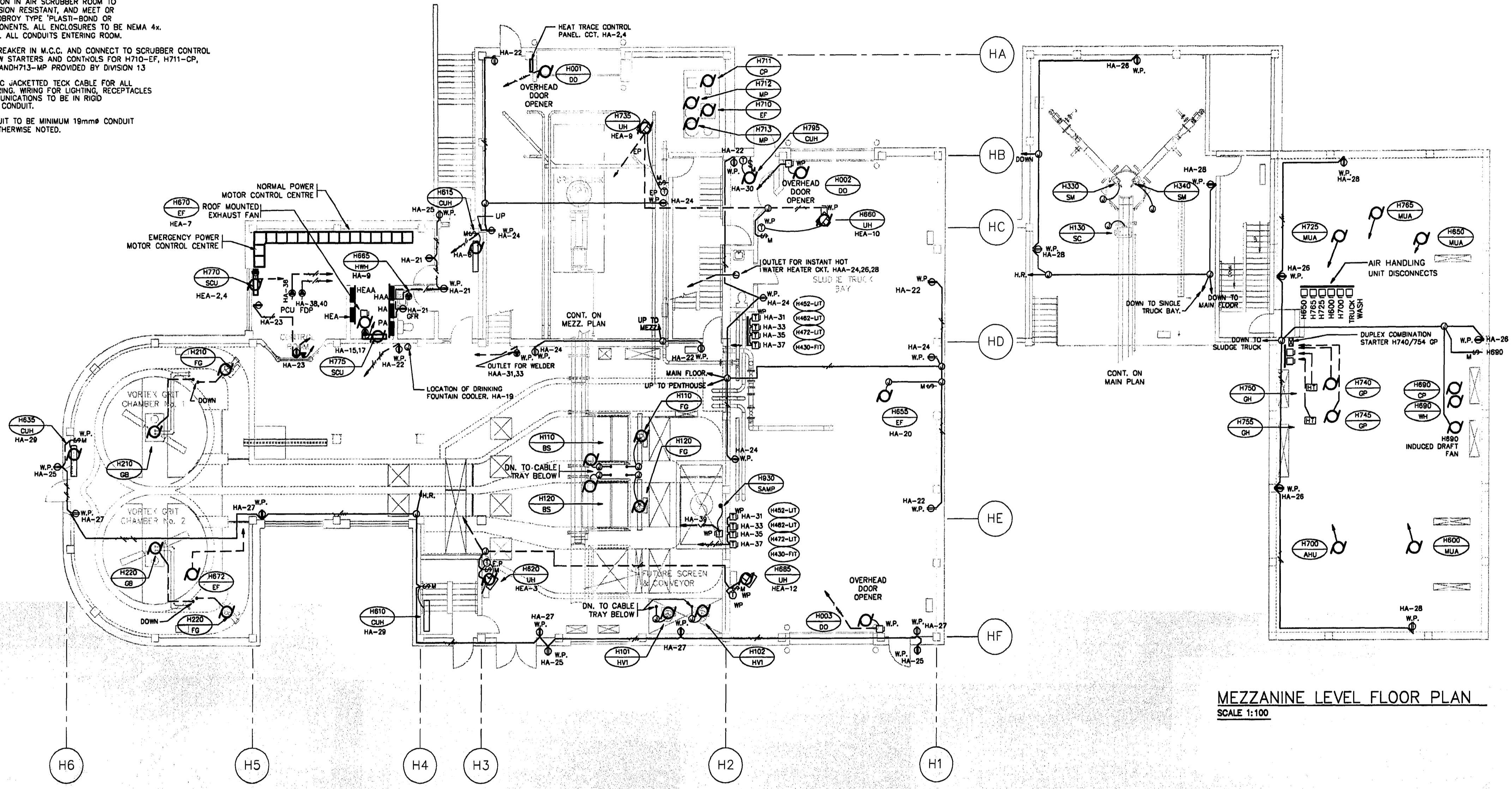


- NOTE:**
- ALL INSTALLATIONS TO BE IN ACCORDANCE WITH CLASS 1 DIVISION 2 STANDARDS FOR GRIT TRUCK BAY AND PROCESS AREA. ALL ENCLOSURES TO HAVE NEMA 4x RATING.
  - CO-ORDINATE CABLE TRAY INTERFERENCE WITH DIVISION 13 AND 15.
  - ALL RECEPTACLES TO BE +915mm AFF UNLESS OTHERWISE NOTED
  - INSTALLATION IN AIR SCRUBBER ROOM TO BE CORROSION RESISTANT, AND MEET OR EXCEED ROBOFRY TYPE "PLASTI-BOND" OR PVC COMPONENTS. ALL ENCLOSURES TO BE NEMA 4x. DUCT SEAL ALL CONDUITS ENTERING ROOM.
  - INSTALL BREAKER IN M.C.C. AND CONNECT TO SCRUBBER CONTROL PANEL C/W STARTERS AND CONTROLS FOR H710-EF, H711-CP, H712-MP AND H713-MP PROVIDED BY DIVISION 13
  - UTILIZE PVC JACKETED TECK CABLE FOR ALL POWER WIRING. WIRING FOR LIGHTING, RECEPTACLES AND COMMUNICATIONS TO BE IN RIGID ALUMINUM CONDUIT.
  - ALL CONDUIT TO BE MINIMUM 19mmØ CONDUIT UNLESS OTHERWISE NOTED.



**MEZZANINE LEVEL FLOOR PLAN**  
SCALE 1:100

THE ENGINEER THAT SEALED THIS DRAWING IS RESPONSIBLE FOR ONLY THE AS-CONSTRUCTED CHANGES ON THIS DRAWING.  
THE ORIGINAL DESIGN WAS THE RESPONSIBILITY OF THE DESIGN ENGINEER WHO SEALED THE ISSUED FOR TENDER DRAWINGS IN 1991.

REID, CROWTHER & PARTNERS LIMITED  
WINNIPEG  
**AS CONSTRUCTED**  
SIG. *[Signature]* DATE: *12/1/99*

detail symbol

	A detail number
	B drawing where detail shown
	C cross reference to drawing where detail taken

B.M.	69-006
ELEV.	237.636 m
NO.	1
REVISIONS	AS BUILT
DATE	93/11
BY	DE

<b>Reid Crowther</b>	
DESIGNED BY	LT
CHECKED BY	DJS
DRAWN BY	EJS
APPROVED BY	
HOR. SCALE:	1:100
VERTICAL:	
RELEASED FOR CONSTRUCTION:	
DATE	91-06-06

ENGINEER'S SEAL  
  
CONSULTANT DRAWING NO.  
60910 - HE3

**THE CITY OF WINNIPEG**  
WORKS AND OPERATIONS DIVISION  
WATERWORKS WASTE AND DISPOSAL DEPT.

WEST END WATER POLLUTION CONTROL CENTRE  
AREA H - HEADWORKS

CITY DRAWING NUMBER  
SHEET OF  
**WEP-162**

File # WS 10213